

# Summer 2026

July-Aug-Sept

CITY OF  
**WAVERLY**

Department of Public Works

### Inside This Edition

- ❖ Eastgate Lift Station Replacement
- ❖ Sanitary Sewer CIPP Lining
- ❖ 2025 Drinking Water Report
- ❖ Water Service Line Reporting
- ❖ Prevent Garbage Fires
- ❖ Bituminous Seal Coat Program

## “Serving the Community Throughout the Seasons”

# Public Works Department

Airport	Water
Garbage	Streets
Recycling	Wastewater Treatment
Yard Waste Site	Sewer Line Maintenance
Equipment Services	Inspection Services
Public Works Administration	

## Eastgate Lift Station Replacement

The City will be replacing the Eastgate Sanitary Sewer Lift Station this summer. The current lift station was built approximately 50 years ago. The existing equipment has reached the end of its service life, and the current location near Highway 3 also makes maintenance difficult.

The new lift station will be located further off of the road. It will include a precast concrete wet well and valve vault, outdoor electrical and control panels, and a diesel backup generator. Added features, such as security fencing, lighting, a bypass pump connection, and maintenance equipment will make the site safer and easier to service.



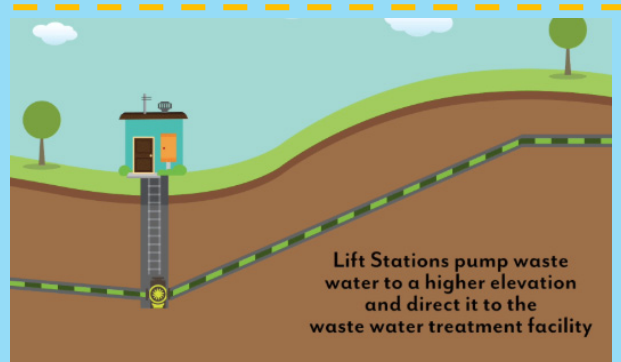
*Current Eastgate Lift Station on East Bremer Avenue*

Utility work will include extending sewer lines to the new location, converting the old wet well into a manhole, removing outdated structures, and connecting the new system to existing sewer infrastructure.

### **Learn About It – What is a Lift Station?**

A lift station moves wastewater from areas of town where mains cannot connect directly to the rest of the system by the use of gravity.

These lift stations collect wastewater at a low point in a tank called a wet well. Pumps inside the wet well then turn on and push the wastewater up into the system where it can then flow by gravity to the treatment plant.



# Sanitary Sewer CIPP Lining Project

Contractors will be completing a cured-in-place pipe (CIPP) sanitary sewer lining project in Waverly this summer. This project will rehabilitate aging sewer lines in 9 areas throughout the city.

Visit [www.waverlyia.com/CIPP26](http://www.waverlyia.com/CIPP26) to view the project area map. Work should have minimal impact on residents. Any disruptions to sewer services will be communicated with property owners before the project starts.

## Learn About It - What is CIPP Lining?

CIPP lining is a trenchless sewer repair method used to fix damaged underground sewer pipes without excavation.

CIPP is a technology that creates a new, seamless “pipe within a pipe” by inserting a resin-soaked liner into an existing sewer line, inflating it and curing it so it hardens in place.

Once cured, it becomes a strong, joint-free replacement pipe that should last from 60-100 years, depending on conditions. All processes and procedures for installation are approved by the Environmental Protection Agency (EPA) and Occupational Safety and Health Administration (OSHA) and follow established guidelines.



# 2025 Annual Drinking Water Report

The 2025 Drinking Water Report is now available. Although all of the standard testing results were within requirements, recent testing has detected elevated levels of PFAS (per- and polyfluoroalkyl substances) in one of the wells that supplies some of our drinking water. PFAS are a group of human-made chemicals that have been widely used in industry and consumer products and are persistent in the environment and human body.

We are actively working with the Iowa Department of Natural Resources (IDNR) and other agencies to assess the next steps and take necessary corrective actions to reduce these levels. Learn more about reducing PFAS in your drinking water with a home filter at [www.waverlyia.com/drinkingwater](http://www.waverlyia.com/drinkingwater).

We will continue to conduct routine water quality monitoring in accordance with regulatory guidelines and remain committed to providing safe water to our community. The health and safety of our residents is our top priority, and we will keep the public informed as we move forward with response and mitigation efforts. For the full water quality report and additional information about PFAS, visit [www.waverlyia.com/waterreport](http://www.waverlyia.com/waterreport) or scan the QR code. Copies are also available at the Public Services Center: 2900 5th Avenue NW and City Hall: 200 1<sup>st</sup> Street NE.



# Water Service Line Reporting Reminder

The City is continuing its efforts to complete a comprehensive inventory of all water service lines, as required by federal regulations. Residents who have not yet reported the material of their water service line may receive a text message from the City as part of this outreach. These messages will come from the City’s official TextMyGov number (319) 419-4459.

Residents can learn how to identify their service line material and submit their information by visiting [www.waverlyia.com/serviceline](http://www.waverlyia.com/serviceline).

For questions or assistance, please contact Waverly Public Services at [publicservices@waverlyia.com](mailto:publicservices@waverlyia.com) or by phone at (319) 352-6247.

**REPORT**

# Only YOU Can Prevent Garbage Fires!

Actually, we can **ALL** help prevent garbage fires! While non-lithium household batteries (AA, AAA, C, D) can go in the garbage, lithium or rechargeable batteries should never be put in the garbage or recycling. Lithium batteries can be crushed and ignite during waste processing – creating a very dangerous situation in the back of a garbage truck!



Take care to never dispose of rechargeable items with the battery still inside. Some examples include:

Smartphones	Tablets/ E-Readers	Laptops/Wireless Accessories	Smartwatches/ Fitness Trackers	Wireless Earbuds/ Headphones	Portable Speakers
Rechargeable Kitchen Gadgets	Flashlights	Electric Toothbrushes	Electric Shavers or Trimmers	Power Tools	Leaf Blowers/ Weed Trimmers
E-Bikes & Hoverboards	Battery Packs	Rechargeable Toys	E-Cigarettes/ Vape Pens	Greeting Cards with Sound	Smoke Detectors
Smart Home Devices	Coin/Button Batteries	Bluetooth Trackers	Robot/Handheld Vacuums	Heated Gloves/ Jackets	Light-Up Decorations

A quick rule of thumb is: If something is rechargeable, lightweight, cordless or charges with a USB cable, it most likely contains a lithium battery and should not go in the garbage.

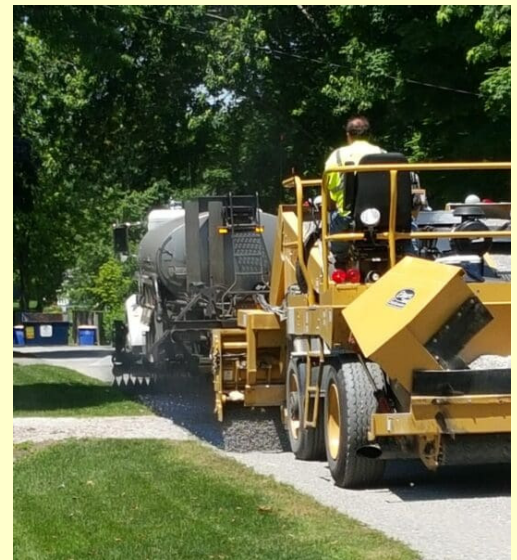
The Bremer County Landfill (2049 200<sup>th</sup> Street) serves as the Regional Collection Center for Household and Hazardous Materials. This site accepts hazardous waste (including lithium and rechargeable batteries) from Bremer County residents at no charge. Items are accepted Monday – Friday and the 1<sup>st</sup> and 3<sup>rd</sup> Saturdays of each month. Call ahead to (319) 352-4574 before taking items to the site.

## Bituminous Seal Coat Program

The Bituminous Seal Coat Program is a road maintenance procedure that consists of the placement of oil (bitumen) and rock upon a street. As soon as the rock has been placed on the street, vehicles may drive slowly on the new surface.

View the site map that shows all streets that will be seal coated this summer on our website at <http://www.waverlyia.com/sealcoat26> or stop by the Public Services facility at 2900 5<sup>th</sup> Avenue NW to view the map.

Approximately 60,000 square yards will be seal coated, with the majority of the work occurring within the southwest side of Waverly. This project will be completed by the end of August. Crews will notify impacted neighborhoods prior to the start of the project to make sure cars and trailers are not parked on the street. In late fall, after the seal coating has had a chance to settle, street sweepers will canvas the area to sweep up loose rock chips.



## Look for Leaks!



Summer is a great time to review your water use and check your home for leaks. Check out our home leak-detection checklist at [www.waverlyia.com/homecheck](http://www.waverlyia.com/homecheck).

City of Waverly  
 Department of Public Works  
 2900 5<sup>th</sup> Avenue NW  
 P.O. Box 616  
 Waverly, IA 50677

Presort  
 Standard  
 U.S. Postage  
 Waverly, IA  
 Permit No.2

## Postal Customer Carrier Route Presort



Department of Public Works

### Garbage & Recycling

July						
S	M	T	W	Th	F	S
			1	2	3	4
5	6	7	8	9	10	11
12	13	14	15	16	17	18
19	20	21	22	23	24	25
26	27	28	29	30	31	

October						
S	M	T	W	Th	F	S
				1	2	3
4	5	6	7	8	9	10
11	12	13	14	15	16	17
18	19	20	21	22	23	24
25	26	27	28	29	30	31

August						
S	M	T	W	Th	F	S
						1
2	3	4	5	6	7	8
9	10	11	12	13	14	15
16	17	18	19	20	21	22
23	24	25	26	27	28	29
30	31					

November						
S	M	T	W	Th	F	S
1	2	3	4	5	6	7
8	9	10	11	12	13	14
15	16	17	18	19	20	21
22	23	24	25	26	27	28
29	30					

September						
S	M	T	W	Th	F	S
		1	2	3	4	5
6	7	8	9	10	11	12
13	14	15	16	17	18	19
20	21	22	23	24	25	26
27	28	29	30			

December						
S	M	T	W	Th	F	S
		1	2	3	4	5
6	7	8	9	10	11	12
13	14	15	16	17	18	19
20	21	22	23	24	25	26
27	28	29	30	31		

If your normal garbage collection day is:	Your garbage (G) and/or curbside recycling (CR) will be collected on:	
<b>Independence Day</b> Fri., July 3	Thurs., July 2	G
<b>Labor Day</b> Mon., Sept. 7	Tues., Sept. 8	G
<b>Thanksgiving</b> Thurs., Nov. 26 Fri., Nov. 27	Wed., Nov. 25 Mon., Nov. 30	G & CR G & CR
<b>Christmas</b> Thurs., Dec. 24 Fri., Dec. 25	Wed., Dec. 23 Mon., Dec. 28	G & CR G & CR



[www.waverlyia.com](http://www.waverlyia.com)

### Newsletter Changes

The Public Works newsletter will now be published twice a year instead of quarterly, with issues mailed in the winter and spring. You can stay connected to the latest Public Works news by following us on Facebook - <https://www.facebook.com/CityofWaverlyIA>, signing up for text alerts, and visiting [www.waverlyia.com](http://www.waverlyia.com).

### Text Alerts

**TextMyGov** • Sign up for City of Waverly text alerts by texting the keyword **WAVERLY** to 91896. After sending the initial keyword, you will be asked to reply "YES" to confirm opt-in.

You can also sign up for alerts about garbage & recycling services. Text **WAVERLY** along with your route day (example **WAVERLYMONDAY**) to 91896.

### Public Services Info

Find out more about our services, location and hours online at [www.waverlyia.com/publicservices](http://www.waverlyia.com/publicservices).

Public Services 319.352.6247  
 Email to: [PublicServices@waverlyia.com](mailto:PublicServices@waverlyia.com)