

# ADDENDUM NO. 1

**Project Description:** 2026 Leisure Services Parking Lot

**Owner:** City of Waverly

**Bid Date:** February 24, 2026

**Bid Time:** 10:00 a.m.

**Date:** February 11, 2026

**BMI Project No.:** 0G1.133771

**City Project No.:**

**QuestCDN No.:** 10028835

## 1.01 GENERAL:

The following changes are, by the issuance of this Addendum, made a part of the Contract Documents for the project referenced above, as if originally contained therein. Execution of the acknowledgment on the bid form shall be the bidder's acceptance of the conditions set forth herein.

## 1.02 ACKNOWLEDGMENT:

This addendum shall be acknowledged on the submitted bid form. Failure to do so may result in the rejection of the bid.

## 1.03 PROJECT MANUAL:

### A. Proposal Attachment: Part C – Bid Item Quantities

- Page 00410-7 and 00410-8: Update bid item 9 and A6 to read "PAVEMENT, ASPHALT, ST 5 INCH OR PCC, 6 INCH, C MIX"

### B. Contract

- Page 00500-6 and 00500-7: Update bid item 9 and A6 to read "PAVEMENT, ASPHALT, ST 5 INCH OR PCC, 6 INCH, C MIX"

## 1.04 PLAN SET:

- Sheet C.01 – Change bid item 9 and A6 description from "PAVEMENT, ASPHALT, ST, 5 INCH" to "PAVEMENT, ASPHALT, ST, 5 INCH OR PCC, 6 INCH, C MIX".
- Sheet C.01 – Change Item 9 Estimate Reference Note to include "C. CONCRETE SHALL BE A C-4 MIX WITH A MINIMUM COMPRESSIVE STRENGTH OF 4,000 PSI AT 28 DAYS. SLAG IS NOT ALLOWED. REINFORCEMENT SHALL BE EPOXY COATED. 6 INCH MODIFIED SUBBASE SHALL BE PLACED UNDER THE PAVEMENT AND IS PAID FOR UNDER A SEPARATE BID ITEM. NO ADDITIONAL PAYMENT FOR COLD WEATHER PAVING OPERATIONS. FINAL TRIMMING OF SUBGRADE OR SUBBASE, INTEGRAL CURB, BARS AND REINFORCEMENT, JOINTS AND SEALING, SURFACE CURING AND PAVEMENT PROTECTION, SAFETY FENCING, CONCRETE FOR RIGID HEADERS, AND BOXOUTS FOR FIXTURES SHALL BE INDICENTAL TO THIS ITEM."
- Sheet D.01 – Change the pavement material legend from "HMA PAVEMENT" to "5" HMA or 6" PCC PAVMENT" and "BID ALTERNATE HMA PAVEMENT" to "BID ALTERNATE PAVEMENT 5" HMA OR 6" PCC".

1.05 **ATTACHMENTS:**

- A. Revised Project Manual (pages 00410-7, 00410-8, 00500-6, and 00500-7).
- B. Two Plan Sheets No. C.01 and D.01.

1.06 **CERTIFICATION:**

I hereby certify that this engineering document was prepared by me or under my direct personal supervision and that I am a duly licensed Professional Engineer under the laws of the State of Iowa.

By: David Millmeyer

David Millmeyer, P.E.

License No: P28884

License Renewal Date: December 31, 2027

\*\*\*\*END OF ADDENDUM NO. 1\*\*\*\*

**PROPOSAL ATTACHMENT: PART C – BID ITEMS AND QUANTITIES**

2026 Leisure Services Parking Lot  
City of Waverly  
Waverly, IA

This is a UNIT PRICE CONTRACT. The Bidder must provide the Unit Bid Price, the Total Bid Price, any Alternate Prices, and the Total Construction Costs on the Proposal Attachment: Part C – Bid Items and Quantities. In case of discrepancy, the Unit Bid Price governs. The quantities shown on the Proposal Attachment: Part C – Bid Items and Quantities are approximate only, but are considered sufficiently adequate for the purpose of comparing bids.

<b>ESTIMATED PROJECT QUANTITIES</b>						
<b>BASE BID</b>						
<b>Item No.</b>	<b>Item Code</b>	<b>Item</b>	<b>Unit</b>	<b>Quantity</b>	<b>Unit Price</b>	<b>Total</b>
1	0000-999-BA	BOLLARD	EA	11		
2	2010-E	EXCAVATION, CLASS 10 WASTE	CY	177		
3	2010-G	SUBGRADE PREPARATION	SY	2,289		
4	2010-J	SUBBASE, MODIFIED, 6 INCHES	SY	2,289		
5	6010-E	MANHOLE ADJUSTMENT, MINOR	EA	2		
6	7010-A	PAVEMENT, PCC, 6 INCH, C MIX	SY	305		
7	7010-A	PAVEMENT, PCC, FROST FOOTING, C MIX	SY	6		
8	7010-E	CURB AND GUTTER, 2 INCH STANDARD CURB, 30 INCH WIDTH, 6 INCH THICKNESS	LF	193		
9	7020-B	PAVEMENT, ASPHALT, ST, 5 INCH OR PCC, 6 INCH, C MIX	SY	1,936		
10	7040-H	PAVEMENT REMOVAL	SY	2,095		
11	9040-F-1	WATTLE, STRAW, 12 INCH	LF	485		
12	9040-F-2	WATTLE, REMOVAL	LF	485		
13	9040-J	RIP RAP, EROSION STONE	TON	5		
14	9060-E	REMOVAL OF FENCE	LF	80		
15	11010-A	CONSTRUCTION SURVEY	LS	1		
16	11020-A	MOBILIZATION	LS	1		
<b>BASE BID TOTAL:</b>						<b>\$</b>

BASE BID – TOTAL (Written Format): \_\_\_\_\_

\_\_\_\_\_

**ALTERNATE A**

Item No.	Item Code	Item	Unit	Quantity	Unit Price	Total
A1	2010-E	EXCAVATION, CLASS 10 WASTE	CY	49	\$	\$
A2	2010-G	SUBGRADE PREPARATION	SY	496	\$	\$
A3	2010-J	SUBBASE, MODIFIED, 6 INCHES	SY	496	\$	\$
A4	7010-E	CURB AND GUTTER, 2 INCH STANDARD CURB, 30 INCH WIDTH, 6 INCH THICKNESS	LF	107	\$	\$
A5	7010-E	CURB AND GUTTER, 4 INCH SLOPED CURB, 30 INCH WIDTH, 6 INCH THICKNESS	LF	130	\$	\$
A6	7020-B	PAVEMENT, ASPHALT, ST, 5 INCH OR PCC, 6 INCH, C MIX	SY	432	\$	\$
A7	7040-H	PAVEMENT REMOVAL	SY	465	\$	\$
A8	9040-F-1	WATTLE, STRAW, 12 INCH	LF	215	\$	\$
A9	9040-F-2	WATTLE, REMOVAL	LF	215	\$	\$
<b>ALTERNATE A BID TOTAL:</b>						<b>\$</b>

ALTERNATE A – TOTAL (Written Format): \_\_\_\_\_

NOTE: IT IS UNDERSTOOD THAT THE ABOVE QUANTITIES ARE ESTIMATED FOR THE PURPOSE OF THIS BID. ALL QUANTITIES ARE SUBJECT TO REVISION BY THE JURISDICTION AS NOTED IN SECTION 00500 - "CONTRACT" OF THIS PROJECT MANUAL.

\_\_\_\_\_  
Bidder Name

**CONTRACT ATTACHMENT: ITEM 1: GENERAL – NONE**

**CONTRACT ATTACHMENT: ITEM 2: BID ITEMS AND, QUANTITIES**

THIS CONTRACT IS AWARDED AND EXECUTED FOR COMPLETION OF THE WORK SPECIFIED IN THE CONTRACT DOCUMENTS FOR THE BID PRICES TABULATED BELOW AS PROPOSED BY THE CONTRACTOR IN ITS PROPOSAL SUBMITTED IN ACCORDANCE WITH NOTICE TO BIDDERS AND NOTICE OF PUBLIC HEARING. ALL QUANTITIES ARE SUBJECT TO REVISION BY THE JURISDICTION. THE JURISDICTION RESERVES THE RIGHT TO ADJUST QUANTITIES AS NECESSARY TO MAXIMIZE FUNDS BUDGETED FOR THIS PROJECT AS NOTED IN SECTION 00500 – CONTRACT.

ESTIMATED PROJECT QUANTITIES						
BASE BID						
Item No.	Item Code	Item	Unit	Quantity	Unit Price	Total
1	0000-999-BA	BOLLARD	EA	11		
2	2010-E	EXCAVATION, CLASS 10 WASTE	CY	177		
3	2010-G	SUBGRADE PREPARATION	SY	2,289		
4	2010-J	SUBBASE, MODIFIED, 6 INCHES	SY	2,289		
5	6010-E	MANHOLE ADJUSTMENT, MINOR	EA	2		
6	7010-A	PAVEMENT, PCC, 6 INCH, C MIX	SY	305		
7	7010-A	PAVEMENT, PCC, FROST FOOTING, C MIX	SY	6		
8	7010-E	CURB AND GUTTER, 2 INCH STANDARD CURB, 30 INCH WIDTH, 6 INCH THICKNESS	LF	193		
9	7020-B	PAVEMENT, ASPHALT, ST, 5 INCH OR PCC, 6 INCH, C MIX	SY	1,936		
10	7040-H	PAVEMENT REMOVAL	SY	2,095		
11	9040-F-1	WATTLE, STRAW, 12 INCH	LF	485		
12	9040-F-2	WATTLE, REMOVAL	LF	485		
13	9040-J	RIP RAP, EROSION STONE	TON	5		
14	9060-E	REMOVAL OF FENCE	LF	80		
15	11010-A	CONSTRUCTION SURVEY	LS	1		
16	11020-A	MOBILIZATION	LS	1		
BASE BID TOTAL:						\$

**ALTERNATE A**

Item No.	Item Code	Item	Unit	Quantity	Unit Price	Total
A1	2010-E	EXCAVATION, CLASS 10 WASTE	CY	49	\$	\$
A2	2010-G	SUBGRADE PREPARATION	SY	496	\$	\$
A3	2010-J	SUBBASE, MODIFIED, 6 INCHES	SY	496	\$	\$
A4	7010-E	CURB AND GUTTER, 2 INCH STANDARD CURB, 30 INCH WIDTH, 6 INCH THICKNESS	LF	107	\$	\$
A5	7010-E	CURB AND GUTTER, 4 INCH SLOPED CURB, 30 INCH WIDTH, 6 INCH THICKNESS	LF	130	\$	\$
A6	7020-B	PAVEMENT, ASPHALT, ST, 5 INCH OR PCC, 6 INCH, C MIX	SY	432	\$	\$
A7	7040-H	PAVEMENT REMOVAL	SY	465	\$	\$
A8	9040-F-1	WATTLE, STRAW, 12 INCH	LF	215	\$	\$
A9	9040-F-2	WATTLE, REMOVAL	LF	215	\$	\$
<b>ALTERNATE A BID TOTAL:</b>						<b>\$</b>

© Bolton & Menk, Inc. 2026. All Rights Reserved.  
H:\WAVERLY\_CITY\General\2025\202506 Leisue Services Parking Lot CAD\CAD\346578001.dwg 2/11/2026 1:46:52 PM

ESTIMATED PROJECT QUANTITIES - BASE BID					
ITEM NO.	ITEM CODE	ITEM	UNIT	QUANTITY	AS-BUILT QTY.
1	0000-999-BA	BOLLARD	EA	11	
2	2010-E	EXCAVATION, CLASS 10 WASTE	CY	177	
3	2010-G	SUBGRADE PREPARATION	SY	2289	
4	2010-J	SUBBASE, MODIFIED, 6 INCHES	SY	2289	
5	6010-E	MANHOLE ADJUSTMENT, MINOR	EA	2	
6	7010-A	PAVEMENT, PCC, 6 INCH, C MIX	SY	305	
7	7010-A	PAVEMENT, PCC, FROST FOOTING, C MIX	SY	6	
8	7010-E	CURB AND GUTTER, 2 INCH STANDARD CURB, 30 INCH WIDTH, 6 INCH THICKNESS	LF	193	
9	7020-B	PAVEMENT, ASPHALT, ST, 5 INCH OR PCC, 6 INCH, C MIX	SY	1936	
10	7040-H	PAVEMENT REMOVAL	SY	2095	
11	9040-F-1	WATTLE, STRAW, 12 INCH	LF	485	
12	9040-F-2	WATTLE, REMOVAL	LF	485	
13	9040-J	RIP RAP, EROSION STONE	TON	5	
14	9060-E	REMOVAL OF FENCE	LF	80	
15	11010-A	CONSTRUCTION SURVEY	LS	1	
16	11020-A	MOBILIZATION	LS	1	

ESTIMATE REFERENCE INFORMATION		
ITEM NO.	ITEM CODE	DESCRIPTION
1	0000-999-B A	<u>BOLLARD</u>  THIS ITEM SHALL INCLUDE ALL MATERIAL AND LABOR TO INSTALL A 8 INCH STEEL BOLLARD. THE BOLLARD SHALL BE 8 INCH DIAMETER CONCRETE FILLED STANDARD STEEL BOLLARD. SEE DETAIL 1 ON SHEET B.02 FOR INFORMATION AND SHEET D.01 FOR PROPOSED LOCATIONS.
2	2010-E	<u>EXCAVATION, CLASS 10 WASTE</u> THIS ITEM SHALL INCLUDE THE REMOVAL OF EXISTING SOIL, HAULING, DISPOSAL/EXPORT AND RE-GRADING AS PER PLAN TO FACILITATE ALL PROPOSED SECTIONS. ALL BORROW SHALL BE PROVIDED BY THE CONTRACTOR. EXCESS OR UNSUITABLE EXCAVATED MATERIAL WILL BECOME PROPERTY OF THE CONTRACTOR AND WILL BE HAULED OFF-SITE INCIDENTAL TO THE ITEM. NO ADDITIONAL PAYMENT WILL BE ALLOWED FOR OVERHAUL OF WASTE. TOPSOIL SHALL BE PLACED AND SPREAD TO A MINIMUM THICKNESS OF 6" IN ALL DISTURBED TURF AREAS AND PAID FOR AS TOPSOIL, ON-SITE. RAW CUT = 177 CY, RAW FILL = 58 CY, ADJUSTED FILL (1.30 FACTOR) = 76 CY RAW EARTHWORK QUANTITIES ARE FOR INFORMATIONAL PURPOSES ONLY ARE A COMPARISON OF EXISTING CONDITIONS AND PROPOSED CONDITIONS AND MAY INCLUDE MATERIALS AND OPERATIONS PAID FOR UNDER OTHER BID ITEMS E.G. PAVEMENT REMOVAL, STORM SEWER TRENCHED, PCC PAVEMENT, SUBBASE, TOPSOIL, COMPOST AMENDMENT, ETC. MEASUREMENT WILL NOT BE MADE AND QUANTITY PAID WILL BE ON A PERCENT OF ITEM COMPLETE.
3	2010-G	<u>SUBGRADE PREPARATION</u> A. BID ITEM SHALL BE USED UNDER ALL PAVEMENT SECTIONS EXTENDING 1 FEET BEYOND THE PAVEMENT EDGE. IN INSTANCES OF CONFLICT WITH EXISTING UTILITIES, THE DEPTH MAY BE REDUCED AS DIRECTED BY THE ENGINEER. B. SUBGRADE PREPARATION SHALL ONLY BE USED IN AREAS THAT FAIL A PROOF ROLL AFTER REGRADING HAS BEEN COMPLETED. THIS BID ITEM SHALL SET A UNIT PRICE. ONLY AREAS REQUIRING SUBGRADE PREPARATION AS DETERMINED BY THE ENGINEER OR CITY OF WAVERLY STAFF SHALL BE PAID.
4	2010-J	<u>SUBBASE, MODIFIED, 6 INCHES</u> THIS ITEM INCLUDES, BUT IS NOT LIMITED TO, COMPACTION OF SUBGRADE, FURNISHING, PLACING, COMPACTING, AND TRIMMING TO THE PROPER GRADE.
5	6010-E	<u>MANHOLE ADJUSTMENT, MINOR</u>  A. THIS BID ITEM SHALL INCLUDE ALL MATERIALS, LABOR AND EQUIPMENT NECESSARY TO ADJUST CASTINGS TO FINISHED GRADE. THIS ITEM INCLUDES THE REMOVAL AND REPLACEMENT OF ADJUSTMENT RINGS AND THE INSTALLATION OF NEW CASTING. B. THIS BID ITEM IS FOR ADJUSTMENT OF MANHOLES TO THE FINISH GRADE SURFACING.
6	7010-A	<u>PAVEMENT, PCC, 6 INCH, C MIX</u> CONCRETE SHALL BE A C-4 MIX WITH A MINIMUM COMPRESSIVE STRENGTH OF 4,000 PSI AT 28 DAYS. SLAG IS NOT ALLOWED. CURB AND GUTTER SECTION IS INCLUDE IN THE AREA OF THIS ITEM AND SHALL BE INCIDENTAL TO PAVEMENT CONSTRUCTION. REINFORCEMENT SHALL BE EPOXY COATED. 6 INCH MODIFIED SUBBASE SHALL BE PLACED UNDER THE PAVEMENT AND IS PAID FOR UNDER A SEPARATE BID ITEM. NO ADDITIONAL PAYMENT FOR COLD WEATHER PAVING OPERATIONS. FINAL TRIMMING OF SUBGRADE OR SUBBASE, INTEGRAL CURB, BARS AND REINFORCEMENT, JOINTS AND SEALING, SURFACE CURING AND PAVEMENT PROTECTION, SAFETY FENCING, CONCRETE FOR RIGID HEADERS, AND BOXOUTS FOR
7	7010-A	<u>PAVEMENT, PCC, FROST FOOTING, C MIX</u>  A. THIS BID ITEM IS FOR INSTALLATION OF NEW FROST FOOTINGS AS DETAILED ON B.01 AND APPROVED BY THE ENGINEER. B. EXISTING FROST FOOTINGS SHALL REMAIN AS SHOWN ON SHEETS D.01 AND Q.01. C. VERIFY ALL LOCATIONS PRIOR TO REMOVALS WITH THE ENGINEER OR CITY OF WAVERLY STAFF.

ESTIMATED PROJECT QUANTITIES (ALTERNATE A)					
ITEM NO.	ITEM CODE	ITEM	UNIT	QUANTITY	AS-BUILT QTY.
A1	2010-E	EXCAVATION, CLASS 10 WASTE	CY	49	
A2	2010-G	SUBGRADE PREPARATION	SY	496	
A3	2010-J	SUBBASE, MODIFIED, 6 INCHES	SY	496	
A4	7010-E	CURB AND GUTTER, 2 INCH STANDARD CURB, 30 INCH WIDTH, 6 INCH THICKNESS	LF	107	
A5	7010-E	CURB AND GUTTER, 4 INCH SLOPED CURB, 30 INCH WIDTH, 6 INCH THICKNESS	LF	130	
A6	7020-B	PAVEMENT, ASPHALT, ST, 5 INCH OR PCC, 6 INCH, C MIX	SY	432	
A7	7040-H	PAVEMENT REMOVAL	SY	465	
A8	9040-F-1	WATTLE, STRAW, 12 INCH	LF	215	
A9	9040-F-2	WATTLE, REMOVAL	LF	215	

8	7010-E	<u>CURB AND GUTTER, 2 INCH STANDARD CURB, 30 INCH WIDTH, 6 INCH THICKNESS</u> A. THIS ITEM SHALL INCLUDE ALL LABOR, EQUIPMENT, AND MATERIALS REQUIRED TO CONSTRUCT 2.5' PCC CURB AND GUTTER REGARDLESS OF LOCATION AND METHOD OF PLACEMENT. B. CONCRETE WILL BE A C-4 MIX WITH A MINIMUM COMPRESSIVE STRENGTH OF 4,000 PSI AT 28 DAYS. SLAG IS NOT ALLOWED. C. ANY VOIDS IN THE BACK OF CURB SHALL BE FILLED WITH GROUT PRIOR TO BACKFILLING THE CURBS.
9	7020-B	<u>PAVEMENT, ASPHALT, ST, 5 INCH OR PCC, 6 INCH, C MIX</u>  A. BID ITEM INCLUDES ALL EQUIPMENT, LABOR AND MATERIALS NECESSARY FOR INSTALLATION OF 3 INCHES OF HMA BASE LAYER (HMA ST BASE, 3/4" MIX, PG58-28H) AND INSTALLATION OF 2 INCHES OF HMA SURFACE LAYER (HMA ST SURFACE, 1/2" MIX, PG58-28H) REFER TO D SHEETS FOR LIMITS AND B SHEETS FOR TYPICAL SECTIONS. B. ASPHALT BINDER SHALL BE INCIDENTAL TO THIS ITEM. PAVEMENT SMOOTHNESS SHALL APPLY TO THIS BID ITEM. C. CONCRETE SHALL BE A C-4 MIX WITH A MINIMUM COMPRESSIVE STRENGTH OF 4,000 PSI AT 28 DAYS. SLAG IS NOT ALLOWED. REINFORCEMENT SHALL BE EPOXY COATED. 6 INCH MODIFIED SUBBASE SHALL BE PLACED UNDER THE PAVEMENT AND IS PAID FOR UNDER A SEPARATE BID ITEM. NO ADDITIONAL PAYMENT FOR COLD WEATHER PAVING OPERATIONS. FINAL TRIMMING OF SUBGRADE OR SUBBASE, INTEGRAL CURB, BARS AND REINFORCEMENT, JOINTS AND SEALING, SURFACE CURING AND PAVEMENT PROTECTION, SAFETY FENCING, CONCRETE FOR RIGID HEADERS, AND BOXOUTS FOR FIXTURES SHALL BE INCIDENTAL TO THIS ITEM. D. CONTRACTOR SHALL VERIFY AND MAINTAIN POSITIVE DRAINAGE OF ALL AREAS.
10	7040-H	<u>PAVEMENT REMOVAL</u> A. ALL REMOVALS TO BE MARKED AND MEASURED BY THE ENGINEER. FULL DEPTH SAW CUTS ALONG THE REMOVAL LIMITS ARE INCIDENTAL TO THIS ITEM. THE CONTRACTOR SHALL BE RESPONSIBLE FOR ADDITIONAL REMOVAL, EARTHWORK, SUBGRADE PREPARATION, MODIFIED SUBBASE AND PAVING EXPENSES DUE TO DAMAGED EDGES. ADDITIONAL REMOVAL TO BE DETERMINED BY ENGINEER. PAYMENT SHALL BE MADE FOR THE AREA OF PAVEMENT REMOVED, REGARDLESS OF THICKNESS OR MATERIAL. CONTRACTOR SHALL LEGALLY DISPOSE OF ALL MATERIALS AT AN OFF-SITE WASTE AREA. B. THIS ITEM SHALL INCLUDE REMOVAL OF ALL ROCK AND PAVEMENT NEEDED FOR PAVEMENT INSTALLATION PER DETAILS ON SHEET B.01
11	9040-F-1	<u>WATTLE, STRAW, 12 INCH</u>  A. ITEM INCLUDES INSTALLATION AND MAINTENANCE OF WATTLES. B. PAYMENT QUANTITY SHALL BE LIMITED TO THE EXTENTS SHOWN ON THE D.01 SHEET. IF CONTRACTOR DETERMINES THAT ADDITIONAL QUANTITY IS REQUIRED TO PROPERLY PROTECT THE SITE AS REQUIRED BY THE NPDES GENERAL PERMIT NO. 2, THEY MUST NOTIFY THE ENGINEER AND HAVE APPROVAL PRIOR TO THE INSTALLATION. C. ANY QUANTITY ABOVE PLAN QUANTITY INSTALLED PRIOR TO ENGINEER APPROVAL MAY NOT BE PAID.
12	9040-F-2	<u>WATTLE, REMOVAL</u> A. ITEM INCLUDES REMOVAL OF WATTLES. B. PAYMENT QUANTITY SHALL BE LIMITED TO THE EXTENTS SHOWN ON THE D.01 SHEET. IF CONTRACTOR DETERMINES THAT ADDITIONAL QUANTITY IS REQUIRED TO PROPERLY PROTECT THE SITE AS REQUIRED BY THE NPDES GENERAL PERMIT NO. 2, THEY MUST NOTIFY THE ENGINEER AND HAVE APPROVAL PRIOR TO THE INSTALLATION. C. ANY QUANTITY ABOVE PLAN QUANTITY INSTALLED PRIOR TO ENGINEER APPROVAL MAY NOT BE PAID.
13	9040-J	<u>RIP RAP, EROSION STONE</u>  A. REFER TO Q.01 SHEET FOR LOCATION. THIS ITEM INCLUDES ALL LABOR, MATERIALS, AND EQUIPMENT TO FURNISH AND INSTALL RIP RAP. INSTALLATION OF ENGINEERING FABRIC UNDER RIP RAP SHALL BE CONSIDERED INCIDENTAL TO THIS ITEM.
14	9060-E	<u>REMOVAL OF FENCE</u>  A. REFER TO Q.01 SHEET FOR LOCATION. B. THIS ITEM TO BE PAID PER LINEAR FOOT. ACTUAL QUANTITY TO BE MEASURED IN THE FIELD.
15	11010-A	<u>CONSTRUCTION SURVEY</u> A. THIS ITEM IS FOR ALL SURVEY WORK NECESSARY FOR CONSTRUCTION OF THIS PROJECT AS DETAILED ON THE CONSTRUCTION DOCUMENTS AND APPROVED REVISIONS. ELECTRONIC DRAWINGS ARE AVAILABLE FOR THE CONTRACTORS USE.
16	11020-A	<u>MOBILIZATION</u> A. THIS ITEM IS FOR ALL PREPATORY WORK AND COSTS INCURRED BEFORE BEGINNING THE WORK ON THE PROJECT AND DURING THE PROJECT. THIS ITEM SHALL ALSO INCLUDE THE COSTS FOR ANY STAGED CONSTRUCTION AND EQUIPMENT SET UP TO COMPLETE THE WORK. NO CHANGE IN CONTRACT PRICE WILL BE MADE FOR ANY ADDITIONAL WORK ADDED TO THE CONTRACT.

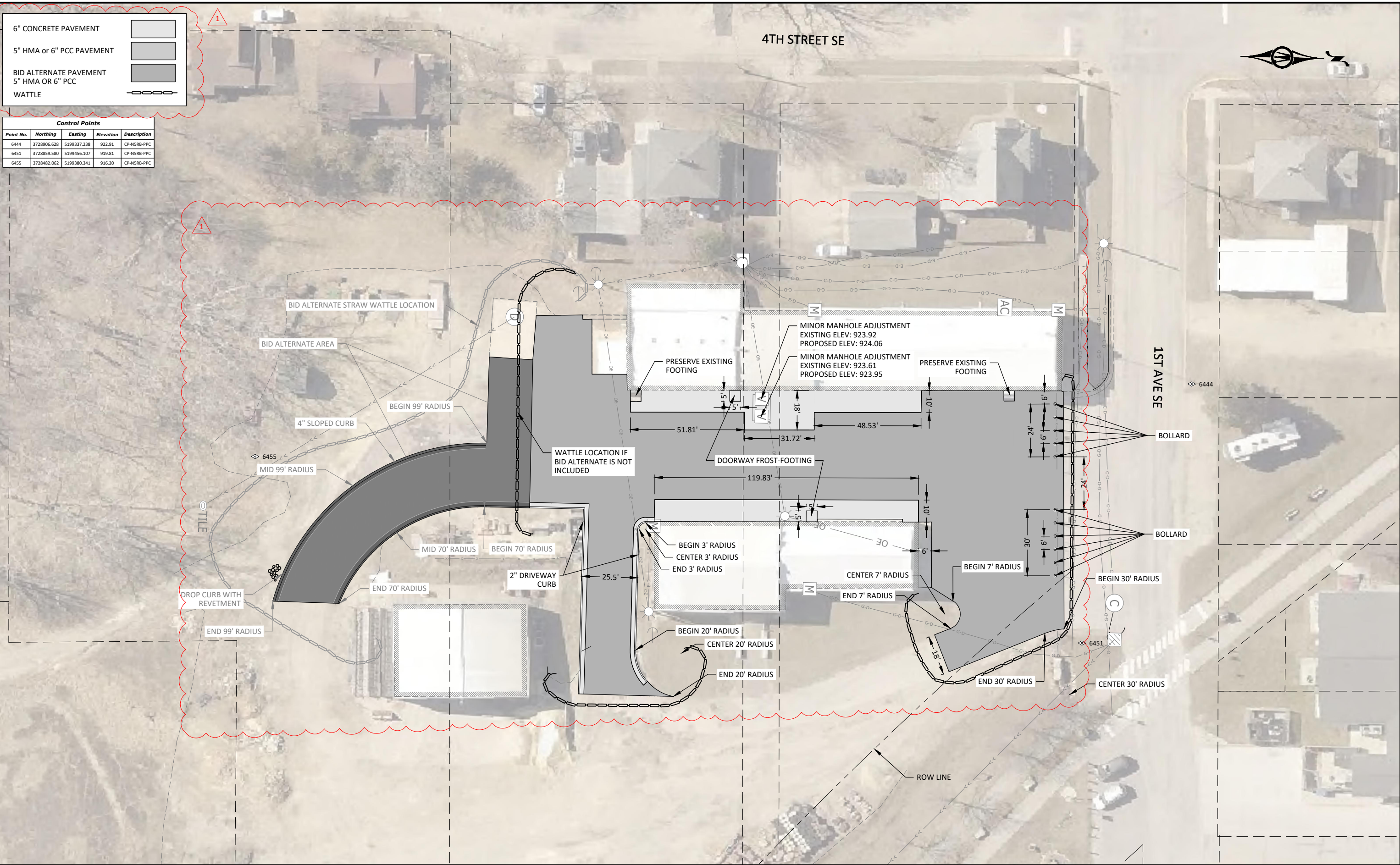
6" CONCRETE PAVEMENT

5" HMA or 6" PCC PAVEMENT

BID ALTERNATE PAVEMENT  
5" HMA OR 6" PCC

WATTLE

Control Points				
Point No.	Northing	Easting	Elevation	Description
6444	3728906.628	5199337.238	922.91	CP-NSRB-PPC
6451	3728859.580	5199456.107	919.81	CP-NSRB-PPC
6455	3728482.062	5199380.341	916.20	CP-NSRB-PPC



401 FIRST ST SE, SUITE 201  
CEDAR RAPIDS, IOWA 52401  
Phone: (319) 362-3219  
Email: CedarRapids@bolton-menk.com  
www.bolton-menk.com

REV	DESCRIPTION	DATE
PJR		
A1	ADDENDUM 1	02/11/2026
PJR		
DEM		
202506		

CITY OF WAVERLY, IOWA  
2026 LEISURE SERVICES PARKING LOT  
LAYOUT PLAN

SHEET  
D.01