

GOVERNING SPECIFICATIONS

THE 2025 EDITION OF THE "IOWA STATEWIDE URBAN SPECIFICATIONS FOR PUBLIC IMPROVEMENTS" AND CITY OF WAVERLY SPECIFICATIONS.

MUTCD 2025 AS ADOPTED BY IOWA DEPARTMENT OF TRANSPORTATION.

ALL APPLICABLE FEDERAL, STATE, AND LOCAL LAWS AND ORDINANCES WILL BE COMPLIED WITHIN THE CONSTRUCTION OF THIS PROJECT.



NOTE: EXISTING UTILITY INFORMATION SHOWN ON THIS PLAN HAS BEEN PROVIDED BY THE UTILITY OWNER. THE CONTRACTOR SHALL FIELD VERIFY EXACT LOCATIONS PRIOR TO COMMENCING CONSTRUCTION AS REQUIRED BY STATE LAW. NOTIFY IOWA ONE CALL 1-800-292-8989 OR 811

THE SUBSURFACE UTILITY INFORMATION IN THIS PLAN IS UTILITY QUALITY LEVEL D UNLESS OTHERWISE NOTED. THIS UTILITY LEVEL WAS DETERMINED ACCORDING TO THE GUIDELINES OF CI/ASCE 38-22, ENTITLED "STANDARD GUIDELINE FOR INVESTIGATING AND DOCUMENTING EXISTING UTILITIES".

RESOURCE LIST

CITY OF WAVERLY, IOWA

City Hall
200 1st St NE
Waverly, IA
50677

Leisure Services Director:
Garret Riordan

Public Works Director:
Justin McGlaun

City Administrator:
James W. Bronner

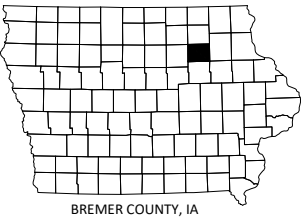
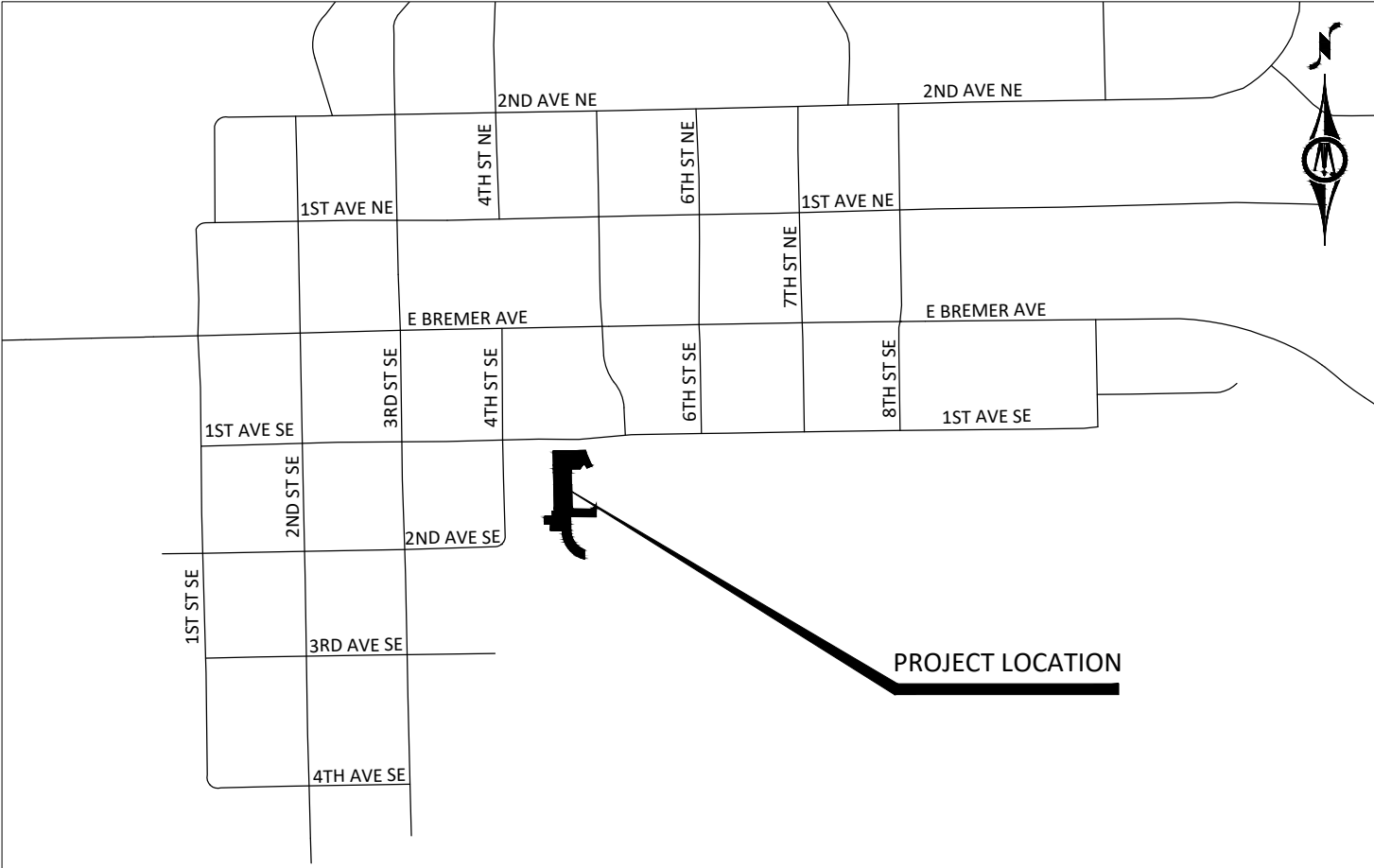
City Engineer:
(Consultant)
David Millmeyer P.E.
Bolton & Menk, Inc.

CITY OF WAVERLY, IA

CONSTRUCTION PLANS FOR

2026 LEISURE SERVICES PARKING LOT

JANUARY, 2026



MAP OF THE
CITY OF WAVERLY
BREMER COUNTY, IA



MAP LEGEND

PROJECT LOCATION

SHEET NUMBER	SHEET TITLE
A.01	TITLE SHEET
A.02	LEGEND
B.01 - B.02	TYPICAL SECTIONS AND DETAILS
C.01	QUANTITIES AND ESTIMATE REFERENCE INFORMATION
D.01	LAYOUT PLAN
D.02 - D.03	GRADING PLAN
Q.01	REMOVAL PLAN
THIS PLAN SET CONTAINS <u>9</u> SHEETS.	



I HEREBY CERTIFY THAT THIS ENGINEERING DOCUMENT WAS PREPARED BY ME OR UNDER MY DIRECT PERSONAL SUPERVISION AND THAT I AM A DULY LICENSED PROFESSIONAL ENGINEER UNDER THE LAWS OF THE STATE OF IOWA.

David Millmeyer
DAVID E. MILLMEYER, P.E.

LICENSE NUMBER: P28884 DATE: 01/12/2026

MY LICENSE RENEWAL DATE IS DECEMBER 31, 2027

PAGES OR SHEETS COVERED BY THIS SEAL:

ALL SHEETS



401 FIRST ST SE, SUITE 201
CEDAR RAPIDS, IOWA 52401
Phone: (319) 362-3219
Email: CedarRapids@bolton-menk.com
www.bolton-menk.com

DESIGNED	REV	DESCRIPTION	DATE
PJR			
DRAWN			
PJR			
CHECKED			
DEM			
CLIENT PROJ. NO.			
202506			

CITY OF WAVERLY, IOWA
2026 LEISURE SERVICES PARKING LOT

TITLE SHEET

SHEET

A.01

© Bolton & Menk, Inc. 2025. All Rights Reserved.
WAVERY, IA 52243
177025 10-11-25 AM

EXISTING TOPOGRAPHIC SYMBOLS			
	ACCESS GRATE		REGULATION STATION GAS
	AIR CONDITION UNIT		SATELLITE DISH
	ANTENNA		SIGN TRAFFIC
	AUTO SPRINKLER CONNECTION		SIGNAL CONTROL CABINET
	BARRICADE PERMANENT		SOIL BORING
	BASKETBALL POST		SIREN
	BENCH		TELEPHONE BOOTH
	BIRD FEEDER		TILE INLET
	BOLLARD		TILE OUTLET
	BUSH		TILE RISER
	CATCH BASIN RECTANGULAR CASTING		TRANSFORMER-ELECTRIC
	CATCH BASIN CIRCULAR CASTING		TREE-CONIFEROUS
	CURB STOP		TREE-DEAD
	CLEAN OUT		TREE-DECIDUOUS
	CULVERT END		TREE STUMP
	DRINKING FOUNTAIN		TRAFFIC ARM BARRIER
	DOWN SPOUT		TRAFFIC SIGNAL
	ELECTRIC CAR CHARGE STATION		TRASH CAN
	FILL PIPE		UTILITY MARKER
	FIRE HYDRANT		VALVE
	FLAG POLE		VALVE POST INDICATOR
	FLARED END / APRON		VALVE VAULT
	FUEL PUMP		VAULT
	GRILL		VENT PIPE
	GUY WIRE ANCHOR		WATER SPIGOT
	HANDHOLE		WELL
	HANDICAP SPACE		WETLAND DELINEATED MARKER
	IRRIGATION SPRINKLER HEAD		WETLAND
	IRRIGATION VALVE BOX		WET WELL
	LIFT STATION CONTROL PANEL		YARD HYDRANT
	LIFT STATION		
	LIGHT POLE		
	MAILBOX		
	MANHOLE-COMMUNICATION		
	MANHOLE-ELECTRIC		
	MANHOLE-GAS		
	MANHOLE-HEAT		
	MANHOLE-RECLAIMED WATER		
	MANHOLE-SANITARY SEWER		
	MANHOLE-STORM SEWER		
	MANHOLE-UTILITY		
	MANHOLE-WATER		
	METER		
	DRIVE-THRU MICROPHONE		
	PARKING METER		
	PAVEMENT MARKING		
	PEDESTAL-COMMUNICATION		
	PEDESTAL-ELECTRIC		
	PEDESTRIAN PUSH BUTTON		
	PICNIC TABLE		
	POLE-UTILITY		
	POST		
	RAILROAD SIGNAL POLE		

SURVEY SYMBOLS			
	BENCHMARK LOCATION		CAST IRON MONUMENT
	CONTROL POINT		STONE MONUMENT
	MONUMENT FOUND		

EXISTING TOPOGRAPHIC LINES	
	RETAINING WALL
	FENCE
	FENCE-DECORATIVE
	GUARD RAIL
	TREE LINE
	BUSH LINE

SURVEY LINES	
	CONTROLLED ACCESS BOUNDARY
	CENTERLINE
	EXISTING EASEMENT LINE
	PROPOSED EASEMENT LINE
	EXISTING LOT LINE
	PROPOSED LOT LINE
	EXISTING RIGHT-OF-WAY
	PROPOSED RIGHT-OF-WAY
	SETBACK LINE
	SECTION LINE
	QUARTER LINE
	SIXTEENTH LINE
	TEMPORARY EASEMENT

EXISTING UTILITY LINES	
	FORCEMAIN
	SANITARY SEWER
	SANITARY SERVICE
	STORM SEWER
	STORM SEWER DRAIN TILE
	WATERMAIN
	WATER SERVICE
	RECLAIMED WATER

PROPOSED UTILITY LINES	
	FORCEMAIN
	SANITARY SEWER
	SANITARY SERVICE
	STORM SEWER
	STORM SEWER DRAIN TILE
	WATERMAIN
	WATER SERVICE
	PIPE CASING
	TRENCHLESS PIPE (PLAN VIEW)
	TRENCHLESS PIPE (PROFILE VIEW)

GRADING INFORMATION	
	EXISTING CONTOUR MINOR
	EXISTING CONTOUR MAJOR
	PROPOSED CONTOUR MINOR
	PROPOSED CONTOUR MAJOR
	PROPOSED GRADING LIMITS / SLOPE LIMITS
	PROJECT LIMITS
	PROPOSED SPOT ELEVATION
	RISE:RUN (SLOPE)

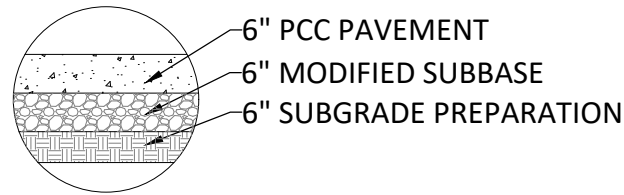
HATCH PATTERNS					
	HEAVY DUTY HMA PAVEMENT		HMA PAVEMENT		PCC PAVEMENT

EXISTING PRIVATE UTILITY LINES					
NOTE: EXISTING UTILITY INFORMATION SHOWN ON THIS PLAN HAS BEEN PROVIDED BY THE UTILITY OWNER. THE CONTRACTOR SHALL FIELD VERIFY EXACT LOCATIONS PRIOR TO COMMENCING CONSTRUCTION AS REQUIRED BY STATE LAW. NOTIFY IOWA ONE CALL - 1-800-292-8989					
THE SUBSURFACE UTILITY INFORMATION IN THIS PLAN IS UTILITY QUALITY LEVEL D UNLESS OTHERWISE NOTED. THIS UTILITY LEVEL WAS DETERMINED ACCORDING TO THE GUIDELINES OF CI/ASCE 38-02, ENTITLED "STANDARD GUIDELINE FOR INVESTIGATING AND DOCUMENTING EXISTING UTILITIES".					
	UNDERGROUND FIBER OPTIC		UNDERGROUND ELECTRIC		
	UNDERGROUND GAS		UNDERGROUND COMMUNICATION		
	OVERHEAD ELECTRIC		OVERHEAD COMMUNICATION		
	OVERHEAD UTILITY				
UTILITIES IDENTIFIED WITH A QUALITY LEVEL OTHER THAN D:					
LINE TYPES FOLLOW THE FORMAT: UTILITY TYPE - QUALITY LEVEL					
EXAMPLE: G-A G-A UNDERGROUND GAS, QUALITY LEVEL A					
UTILITY QUALITY LEVEL (A,B,C,D) DEFINITIONS CAN BE FOUND IN CI/ASCE 38-22.					
UTILITY QUALITY LEVELS:					
LEVEL D - INFORMATION COMES SOLELY FROM EXISTING UTILITY RECORDS.					
LEVEL C - SURVEYING ABOVE GROUND UTILITY FACILITIES, SUCH AS MANHOLES, VALVE BOXES, ETC; AND CORRELATING THIS INFORMATION WITH EXISTING UTILITY RECORDS.					
LEVEL B - THE USE OF SURFACE GEOPHYSICAL TECHNIQUES TO DETERMINE THE EXISTENCE AND HORIZONTAL POSITION OF UNDERGROUND UTILITIES.					
LEVEL A - THE USE OF NONDESTRUCTIVE DIGGING EQUIPMENT AT HORIZONTAL AND VERTICAL POSITION OF UNDERGROUND UTILITIES, AS WELL AS THE TYPE, SIZE, CONDITION, MATERIAL, AND OTHER CHARACTERISTICS.					
ABBREVIATIONS					
A	ALGEBRAIC DIFFERENCE	GV	GATE VALVE	SAN	SANITARY SEWER
ADJ	ADJUST	HDPE	HIGH DENSITY POLYETHYLENE	SCH	SCHEDULE
ALT	ALTERNATE	HH	HANDHOLE	SERV	SERVICE
B-B	BACK TO BACK	HMA	HOT MIX ASPHALT	SHLD	SHOULDER
BLDG	BUILDING	HP	HIGH POINT	STA	STATION
BMP	BEST MANAGEMENT PRACTICE	HWL	HIGH WATER LEVEL	STD	STANDARD
BR	BEGIN RADIUS	HYD	HYDRANT	STM	STORM SEWER
BV	BUTTERFLY VALVE	I	INVERT	TC	TOP OF CURB
CB	CATCH BASIN	K	CURVE COEFFICIENT	TE	TEMPORARY EASEMENT
C&G	CURB AND GUTTER	L	LENGTH	TEMP	TEMPORARY
CIP	CAST IRON PIPE	LO	LOWEST OPENING	TNH	TOP NUT HYDRANT
CIPP	CURED-IN-PLACE PIPE	LP	LOW POINT	TP	TOP OF PIPE
CL	CENTER LINE	LT	LEFT	TYP	TYPICAL
CL	CLASS	MH	MANHOLE	VCP	VITRIFIED CLAY PIPE
CMP	CORRUGATED METAL PIPE	MIN	MINIMUM	VERT	VERTICAL
C.O.	CHANGE ORDER	MR	MID RADIUS	VPC	VERTICAL POINT OF CURVE
COMM	COMMUNICATION	NIC	NOT IN CONTRACT	VPI	VERTICAL POINT OF INTERSECTION
CSP	CORRUGATED STEEL PIPE	NMC	NON-METALLIC CONDUIT	VPT	VERTICAL POINT OF TANGENT
CLVT	CULVERT	NTS	NOT TO SCALE	WM	WATERMAIN
DIA	DIAMETER	NWL	NORMAL WATER LEVEL	WS	WATER SERVICE
DIP	DUCTILE IRON PIPE	OHW	ORDINARY HIGH WATER LEVEL		
DWY	DRIVEWAY	PC	POINT OF CURVE		
E	EXTERNAL CURVE DISTANCE	PCC	PORTLAND CEMENT CONCRETE	AC	ACRES
ESMT	EASEMENT	PE	PERMANENT EASEMENT	CF	CUBIC FEET
ELEC	ELECTRIC	PED	PEDESTRIAN, PEDESTAL	CV	COMPACTED VOLUME
ELEV/EL	ELEVATION	PERF	PERFORATED PIPE	CY	CUBIC YARD
EOF	EMERGENCY OVERFLOW	PERM	PERMANENT	EA	EACH
ER	END RADIUS	PI	POINT OF INTERSECTION	EV	EXCAVATED VOLUME
EX	EXISTING	PL	PROPERTY LINE	LB	POUND
FES	FLARED END SECTION	PRC	POINT OF REVERSE CURVE	LF	LINEAR FEET
F-F	FACE TO FACE	PT	POINT OF TANGENT	LS	LUMP SUM
FF	FINISHED FLOOR	PVC	POLYVINYL CHLORIDE PIPE	LV	LOOSE VOLUME
F&I	FURNISH AND INSTALL	PVMT	PAVEMENT	SF	SQUARE FEET
FM	FORCEMAIN	R	RADIUS	SV	STOCKPILE VOLUME
FO	FIBER OPTIC	RCP	REINFORCED CONCRETE PIPE	SY	SQUARE YARD
F.O.	FIELD ORDER	RET	RETAINING		
GRAN	GRANULAR	R/W	RIGHT-OF-WAY		
GRAV	GRAVEL	RSC	RIGID STEEL CONDUIT		
GU	GUTTER	RT	RIGHT		

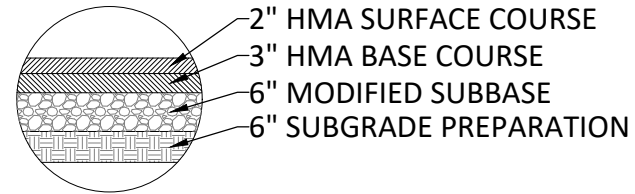
				CITY OF WAVERLY, IOWA		SHEET	
				2025 ALLEY RECONSTRUCTION		A.02	
				LEGEND			

401 FIRST ST SE, SUITE 201
CEDAR RAPIDS, IOWA 52401
Phone: (319) 362-3219
Email: CedarRapids@bolton-menk.com
www.bolton-menk.com

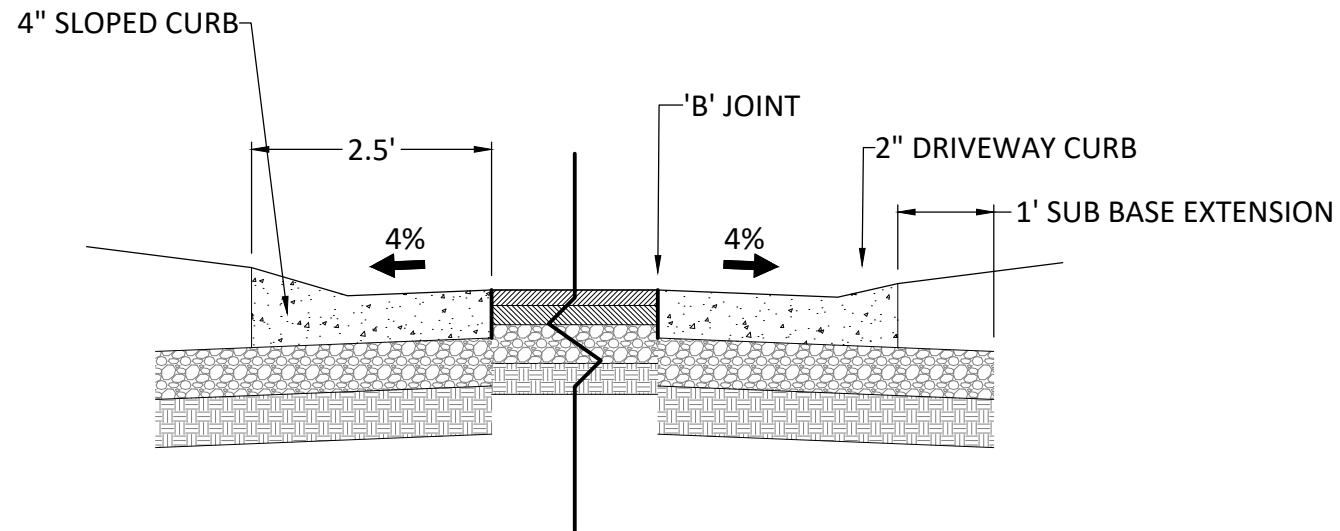
DESIGNED RCK	REV	DESCRIPTION	DATE
DRAWN RCK			
CHECKED DEM			
CLIENT PROJ. NO. OG1.133771			



1
8.01 TYPICAL PCC SECTION
NOT TO SCALE



2
8.01 TYPICAL HMA SECTION
NOT TO SCALE

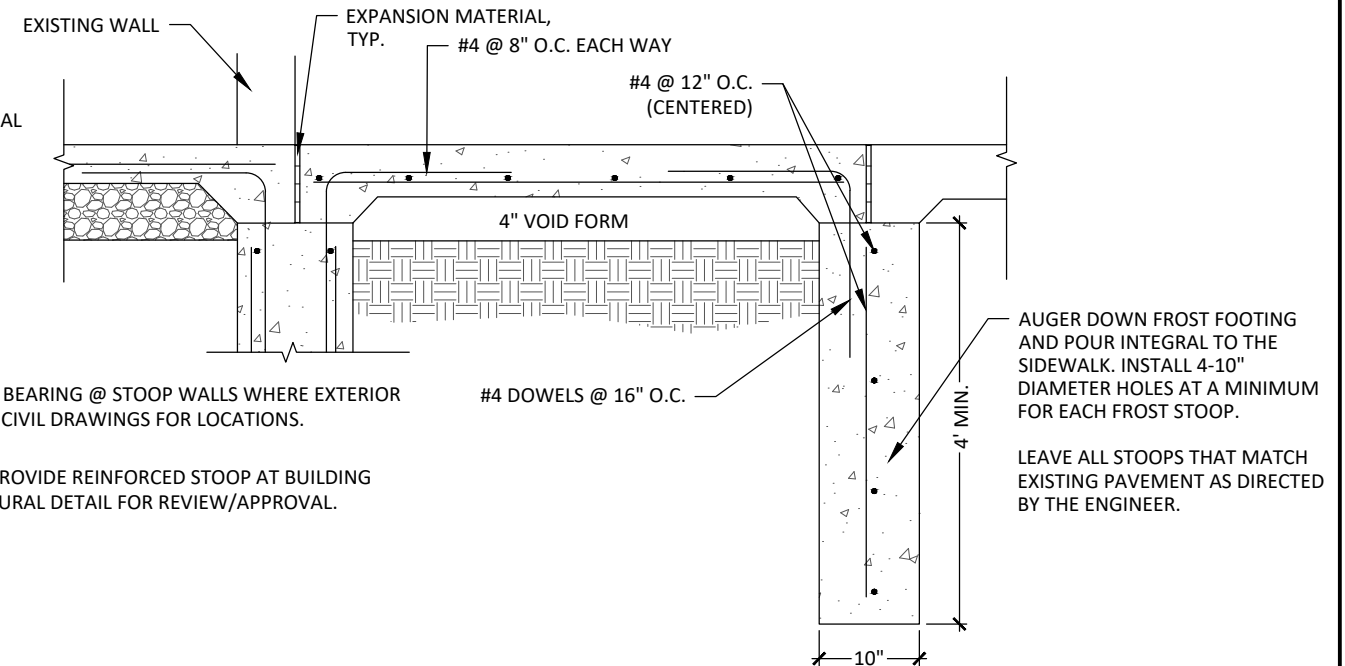


3
8.01 TYPICAL CURB SECTION
NOT TO SCALE

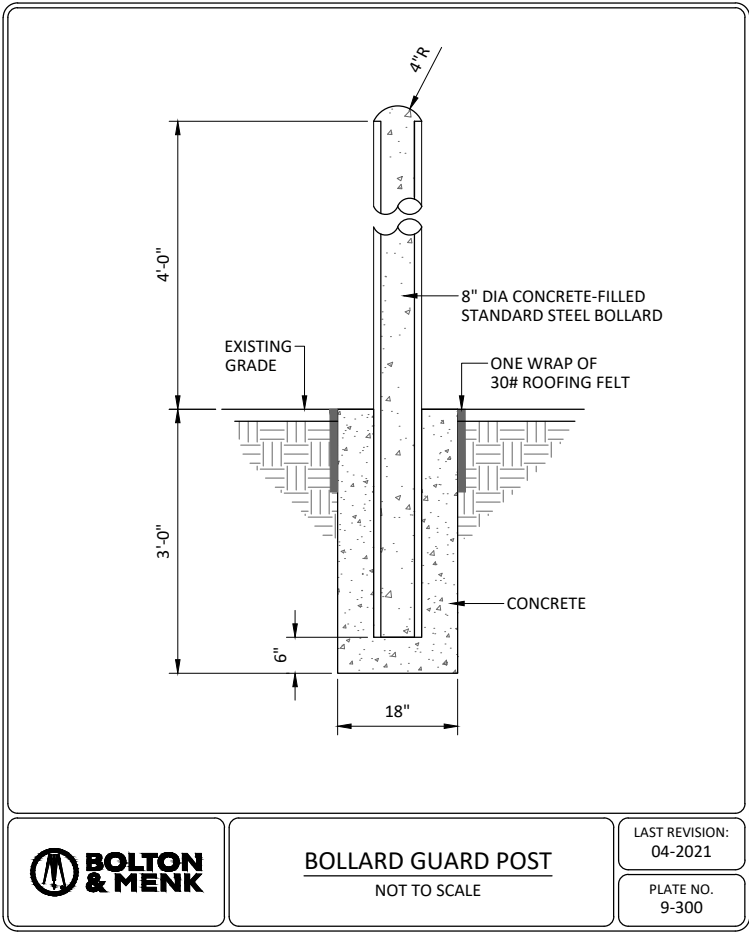
NOTE: DETAIL FOR REFERENCE ONLY.
CONTRACTOR TO PROVIDE STRUCTURAL
SHOP DRAWINGS BASED ON EXISTING
SITE CONDITIONS, FOLLOWING
REMOVAL OF EXISTING PAVEMENT.

NOTE: CONTRACTOR TO PROVIDE 4" BEARING @ STOOP WALLS WHERE EXTERIOR
PAVEMENT/SIDEWALK OCCURS. SEE CIVIL DRAWINGS FOR LOCATIONS.

STOOP SECTION: CONTRACTOR TO PROVIDE REINFORCED STOOP AT BUILDING
ENTRANCE. SUBMIT SIGNED STRUCTURAL DETAIL FOR REVIEW/APPROVAL.



4
8.01 FROST STOOP SECTION
NOT TO SCALE



1
B.02

TYPICAL BOLLARD INSTALLATION
NOT TO SCALE

© Bolton & Menk, Inc. 2025. All Rights Reserved
W:\Waverly\2025\202506 Leisure Services Parking Lot\CAD\CD\345678901.dwg 1/7/2025 10:12:08 AM



401 FIRST ST SE, SUITE 201
CEDAR RAPIDS, IOWA 52401
Phone: (319) 362-3219
Email: CedarRapids@bolton-menk.com
www.bolton-menk.com

DESIGNED	REV	DESCRIPTION	DATE
PJR			
DRAWN			
PJR			
CHECKED			
DEM			
CLIENT PROJ. NO.			
202506			

CITY OF WAVERLY, IOWA
2026 LEISURE SERVICES PARKING LOT

TYPICAL DETAILS

SHEET

B.02

© Bolton & Menk, Inc. 2026. All Rights Reserved.
WAVERY, IA 52093
1/7/2025 10:12:16 AM

ESTIMATED PROJECT QUANTITIES - BASE BID					
ITEM NO.	ITEM CODE	ITEM	UNIT	QUANTITY	AS-BUILT QTY.
1	0000-999-BA	BOLLARD	EA	11	
2	2010-E	EXCAVATION, CLASS 10 WASTE	CY	177	
3	2010-G	SUBGRADE PREPARATION	SY	2289	
4	2010-J	SUBBASE, MODIFIED, 6 INCHES	SY	2289	
5	6010-E	MANHOLE ADJUSTMENT, MINOR	EA	2	
6	7010-A	PAVEMENT, PCC, 6 INCH, C MIX	SY	305	
7	7010-A	PAVEMENT, PCC, FROST FOOTING, C MIX	SY	6	
8	7010-E	CURB AND GUTTER, 2 INCH STANDARD CURB, 30 INCH WIDTH, 6 INCH THICKNESS	LF	193	
9	7020-B	PAVEMENT, ASPHALT, ST, 5 INCH	SY	1936	
10	7040-H	PAVEMENT REMOVAL	SY	2095	
11	9040-F-1	WATTLE, STRAW, 12 INCH	LF	485	
12	9040-F-2	WATTLE, REMOVAL	LF	485	
13	9040-J	RIP RAP, EROSION STONE	TON	5	
14	9060-E	REMOVAL OF FENCE	LF	80	
15	11010-A	CONSTRUCTION SURVEY	LS	1	
16	11020-A	MOBILIZATION	LS	1	

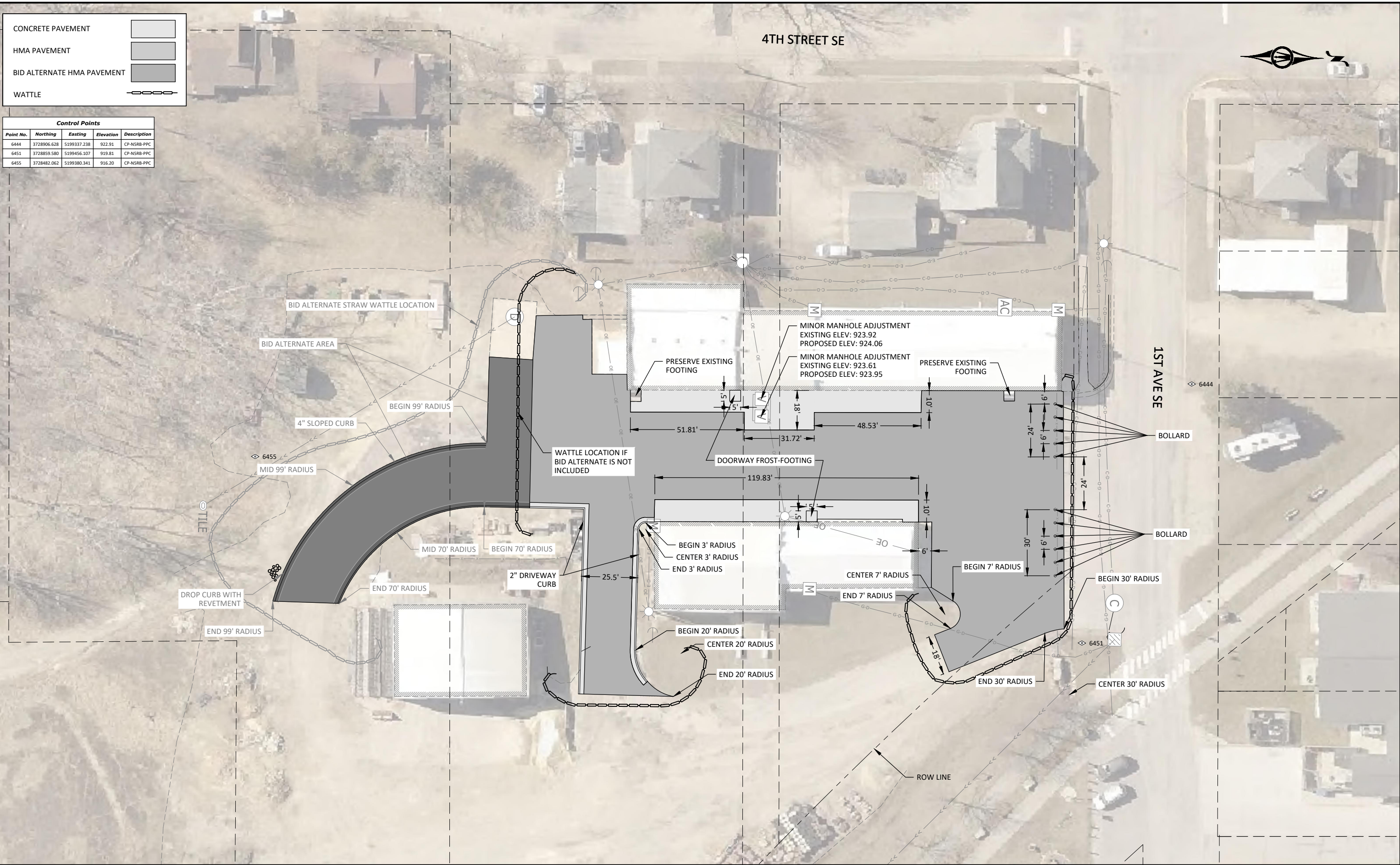
ESTIMATE REFERENCE INFORMATION		
ITEM NO.	ITEM CODE	DESCRIPTION
1	0000-999-B A	<u>BOLLARD</u> THIS ITEM SHALL INCLUDE ALL MATERIAL AND LABOR TO INSTALL A 8 INCH STEEL BOLLARD. THE BOLLARD SHALL BE 8 INCH DIAMETER CONCRETE FILLED STANDARD STEEL BOLLARD. SEE DETAIL 1 ON SHEET B.02 FOR INFORMATION AND SHEET D.01 FOR PROPOSED LOCATIONS.
2	2010-E	<u>EXCAVATION, CLASS 10 WASTE</u> THIS ITEM SHALL INCLUDE THE REMOVAL OF EXISTING SOIL, HAULING, DISPOSAL/EXPORT AND RE-GRADING AS PER PLAN TO FACILITATE ALL PROPOSED SECTIONS. ALL BORROW SHALL BE PROVIDED BY THE CONTRACTOR. EXCESS OR UNSUITABLE EXCAVATED MATERIAL WILL BECOME PROPERTY OF THE CONTRACTOR AND WILL BE HAULED OFF-SITE INCIDENTAL TO THE ITEM. NO ADDITIONAL PAYMENT WILL BE ALLOWED FOR OVERHAUL OF WASTE. TOPSOIL SHALL BE PLACED AND SPREAD TO A MINIMUM THICKNESS OF 6" IN ALL DISTURBED TURF AREAS AND PAID FOR AS TOPSOIL, ON-SITE. RAW CUT = 177 CY, RAW FILL = 58 CY, ADJUSTED FILL (1.30 FACTOR) = 76 CY RAW EARTHWORK QUANTITIES ARE FOR INFORMATIONAL PURPOSES ONLY ARE A COMPARISON OF EXISTING CONDITIONS AND PROPOSED CONDITIONS AND MAY INCLUDE MATERIALS AND OPERATIONS PAID FOR UNDER OTHER BID ITEMS E.G. PAVEMENT REMOVAL, STORM SEWER TRENCHED, PCC PAVEMENT, SUBBASE, TOPSOIL, COMPOST AMENDMENT, ETC. MEASUREMENT WILL NOT BE MADE AND QUANTITY PAID WILL BE ON A PERCENT OF ITEM COMPLETE.
3	2010-G	<u>SUBGRADE PREPARATION</u> A. BID ITEM SHALL BE USED UNDER ALL PAVEMENT SECTIONS EXTENDING 1 FEET BEYOND THE PAVEMENT EDGE. IN INSTANCES OF CONFLICT WITH EXISTING UTILITIES, THE DEPTH MAY BE REDUCED AS DIRECTED BY THE ENGINEER. B. SUBGRADE PREPARATION SHALL ONLY BE USED IN AREAS THAT FAIL A PROOF ROLL AFTER REGRADING HAS BEEN COMPLETED. THIS BID ITEM SHALL SET A UNIT PRICE. ONLY AREAS REQUIRING SUBGRADE PREPARATION AS DETERMINED BY THE ENGINEER OR CITY OF WAVERLY STAFF SHALL BE PAID.
4	2010-J	<u>SUBBASE, MODIFIED, 6 INCHES</u> THIS ITEM INCLUDES, BUT IS NOT LIMITED TO, COMPACTION OF SUBGRADE, FURNISHING, PLACING, COMPACTING, AND TRIMMING TO THE PROPER GRADE.
5	6010-E	<u>MANHOLE ADJUSTMENT, MINOR</u> A. THIS BID ITEM SHALL INCLUDE ALL MATERIALS, LABOR AND EQUIPMENT NECESSARY TO ADJUST CASTINGS TO FINISHED GRADE. THIS ITEM INCLUDES THE REMOVAL AND REPLACEMENT OF ADJUSTMENT RINGS AND THE INSTALLATION OF NEW CASTING. B. THIS BID ITEM IS FOR ADJUSTMENT OF MANHOLES TO THE FINISH GRADE SURFACING.
6	7010-A	<u>PAVEMENT, PCC, 6 INCH, C MIX</u> CONCRETE SHALL BE A C-4 MIX WITH A MINIMUM COMPRESSIVE STRENGTH OF 4,000 PSI AT 28 DAYS. SLAG IS NOT ALLOWED. CURB AND GUTTER SECTION IS INCLUDE IN THE AREA OF THIS ITEM AND SHALL BE INCIDENTAL TO PAVEMENT CONSTRUCTION. REINFORCEMENT SHALL BE EPOXY COATED. 6 INCH MODIFIED SUBBASE SHALL BE PLACED UNDER THE PAVEMENT AND IS PAID FOR UNDER A SEPARATE BID ITEM. NO ADDITIONAL PAYMENT FOR COLD WEATHER PAVING OPERATIONS. FINAL TRIMMING OF SUBGRADE OR SUBBASE, INTEGRAL CURB, BARS AND REINFORCEMENT, JOINTS AND SEALING, SURFACE CURING AND PAVEMENT PROTECTION, SAFETY FENCING, CONCRETE FOR RIGID HEADERS, AND BOXOUTS FOR FIXTURES SHALL BE INDICENTAL TO THIS ITEM.
7	7010-A	<u>PAVEMENT, PCC, FROST FOOTING, C MIX</u> A. THIS BID ITEM IS FOR INSTALLATION OF NEW FROST FOOTINGS AS DETAILED ON B.01 AND APPROVED BY THE ENGINEER. B. EXISTING FROST FOOTINGS SHALL REMAIN AS SHOWN ON SHEETS D.01 AND Q.01. C. VERIFY ALL LOCATIONS PRIOR TO REMOVALS WITH THE ENGINEER OR CITY OF WAVERLY STAFF.

ESTIMATED PROJECT QUANTITIES (ALTERNATE A)					
ITEM NO.	ITEM CODE	ITEM	UNIT	QUANTITY	AS-BUILT QTY.
A1	2010-E	EXCAVATION, CLASS 10 WASTE	CY	49	
A2	2010-G	SUBGRADE PREPARATION	SY	496	
A3	2010-J	SUBBASE, MODIFIED, 6 INCHES	SY	496	
A4	7010-E	CURB AND GUTTER, 2 INCH STANDARD CURB, 30 INCH WIDTH, 6 INCH THICKNESS	LF	107	
A5	7010-E	CURB AND GUTTER, 4 INCH SLOPED CURB, 30 INCH WIDTH, 6 INCH THICKNESS	LF	130	
A6	7020-B	PAVEMENT, ASPHALT, ST, 5 INCH	SY	432	
A7	7040-H	PAVEMENT REMOVAL	SY	465	
A8	9040-F-1	WATTLE, STRAW, 12 INCH	LF	215	
A9	9040-F-2	WATTLE, REMOVAL	LF	215	

8	7010-E	<u>CURB AND GUTTER, 2 INCH STANDARD CURB, 30 INCH WIDTH, 6 INCH THICKNESS</u> A. THIS ITEM SHALL INCLUDE ALL LABOR, EQUIPMENT, AND MATERIALS REQUIRED TO CONSTRUCT 2.5' PCC CURB AND GUTTER REGARDLESS OF LOCATION AND METHOD OF PLACEMENT. B. CONCRETE WILL BE A C-4 MIX WITH A MINIMUM COMPRESSIVE STRENGTH OF 4,000 PSI AT 28 DAYS. SLAG IS NOT ALLOWED. C. ANY VOIDS IN THE BACK OF CURB SHALL BE FILLED WITH GROUT PRIOR TO BACKFILLING THE CURBS
9	7020-B	<u>PAVEMENT, ASPHALT, ST, 5 INCH</u> A. BID ITEM INCLUDES ALL EQUIPMENT, LABOR AND MATERIALS NECESSARY FOR INSTALLATION OF 3 INCHES OF HMA BASE LAYER (HMA ST BASE, 3/4" MIX, PG58-28H) AND INSTALLATION OF 2 INCHES OF HMA SURFACE LAYER (HMA ST SURFACE, 1/2" MIX, PG58-28H) REFER TO D SHEETS FOR LIMITS AND B SHEETS FOR TYPICAL SECTIONS. B. ASPHALT BINDER SHALL BE INCIDENTAL TO THIS ITEM. PAVEMENT SMOOTHNESS SHALL APPLY TO THIS BID ITEM. C. CONTRACTOR SHALL VERIFY AND MAINTAIN POSITIVE DRAINAGE OF ALL AREAS.
10	7040-H	<u>PAVEMENT REMOVAL</u> A. ALL REMOVALS TO BE MARKED AND MEASURED BY THE ENGINEER. FULL DEPTH SAW CUTS ALONG THE REMOVAL LIMITS ARE INCIDENTAL TO THIS ITEM. THE CONTRACTOR SHALL BE RESPONSIBLE FOR ADDITIONAL REMOVAL, EARTHWORK, SUBGRADE PREPARATION, MODIFIED SUBBASE AND PAVING EXPENSES DUE TO DAMAGED EDGES. ADDITIONAL REMOVAL TO BE DETERMINED BY ENGINEER. PAYMENT SHALL BE MADE FOR THE AREA OF PAVEMENT REMOVED, REGARDLESS OF THICKNESS OR MATERIAL. CONTRACTOR SHALL LEGALLY DISPOSE OF ALL MATERIALS AT AN OFF-SITE WASTE AREA. B. THIS ITEM SHALL INCLUDE REMOVAL OF ALL ROCK AND PAVEMENT NEEDED FOR PAVEMENT INSTALLATION PER DETAILS ON SHEET B.01
11	9040-F-1	<u>WATTLE, STRAW, 12 INCH</u> A. ITEM INCLUDES INSTALLATION AND MAINTENANCE OF WATTLES. B. PAYMENT QUANTITY SHALL BE LIMITED TO THE EXTENTS SHOWN ON THE D.01 SHEET. IF CONTRACTOR DETERMINES THAT ADDITIONAL QUANTITY IS REQUIRED TO PROPERLY PROTECT THE SITE AS REQUIRED BY THE NPDES GENERAL PERMIT NO. 2, THEY MUST NOTIFY THE ENGINEER AND HAVE APPROVAL PRIOR TO THE INSTALLATION. C. ANY QUANTITY ABOVE PLAN QUANTITY INSTALLED PRIOR TO ENGINEER APPROVAL MAY NOT BE PAID.
12	9040-F-2	<u>WATTLE, REMOVAL</u> A. ITEM INCLUDES REMOVAL OF WATTLES. B. PAYMENT QUANTITY SHALL BE LIMITED TO THE EXTENTS SHOWN ON THE D.01 SHEET. IF CONTRACTOR DETERMINES THAT ADDITIONAL QUANTITY IS REQUIRED TO PROPERLY PROTECT THE SITE AS REQUIRED BY THE NPDES GENERAL PERMIT NO. 2, THEY MUST NOTIFY THE ENGINEER AND HAVE APPROVAL PRIOR TO THE INSTALLATION. C. ANY QUANTITY ABOVE PLAN QUANTITY INSTALLED PRIOR TO ENGINEER APPROVAL MAY NOT BE PAID.
13	9040-J	<u>RIP RAP, EROSION STONE</u> A. REFER TO Q.01 SHEET FOR LOCATION. THIS ITEM INCLUDES ALL LABOR, MATERIALS, AND EQUIPMENT TO FURNISH AND INSTALL RIP RAP. INSTALLATION OF ENGINEERING FABRIC UNDER RIP RAP SHALL BE CONSIDERED INCIDENTAL TO THIS ITEM.
14	9060-E	<u>REMOVAL OF FENCE</u> A. REFER TO Q.01 SHEET FOR LOCATION. B. THIS ITEM TO BE PAID PER LINEAR FOOT. ACTUAL QUANTITY TO BE MEASURED IN THE FIELD.
15	11010-A	<u>CONSTRUCTION SURVEY</u> A. THIS ITEM IS FOR ALL SURVEY WORK NECESSARY FOR CONSTRUCTION OF THIS PROJECT AS DETAILED ON THE CONSTRUCTION DOCUMENTS AND APPROVED REVISIONS. ELECTRONIC DRAWINGS ARE AVAILABLE FOR THE CONTRACTORS USE.
16	11020-A	<u>MOBILIZATION</u> A. THIS ITEM IS FOR ALL PREPATORY WORK AND COSTS INCURRED BEFORE BEGINNING THE WORK ON THE PROJECT AND DURING THE PROJECT. THIS ITEM SHALL ALSO INCLUDE THE COSTS FOR ANY STAGED CONSTRUCTION AND EQUIPMENT SET UP TO COMPLETE THE WORK. NO CHANGE IN CONTRACT PRICE WILL BE MADE FOR ANY ADDITIONAL WORK ADDED TO THE CONTRACT.

CONCRETE PAVEMENT
HMA PAVEMENT
BID ALTERNATE HMA PAVEMENT
WATTLE

Control Points				
Point No.	Northing	Easting	Elevation	Description
6444	3728906.628	5199337.238	922.91	CP-NSRB-PPC
6451	3728859.580	5199456.107	919.81	CP-NSRB-PPC
6455	3728482.062	5199380.341	916.20	CP-NSRB-PPC

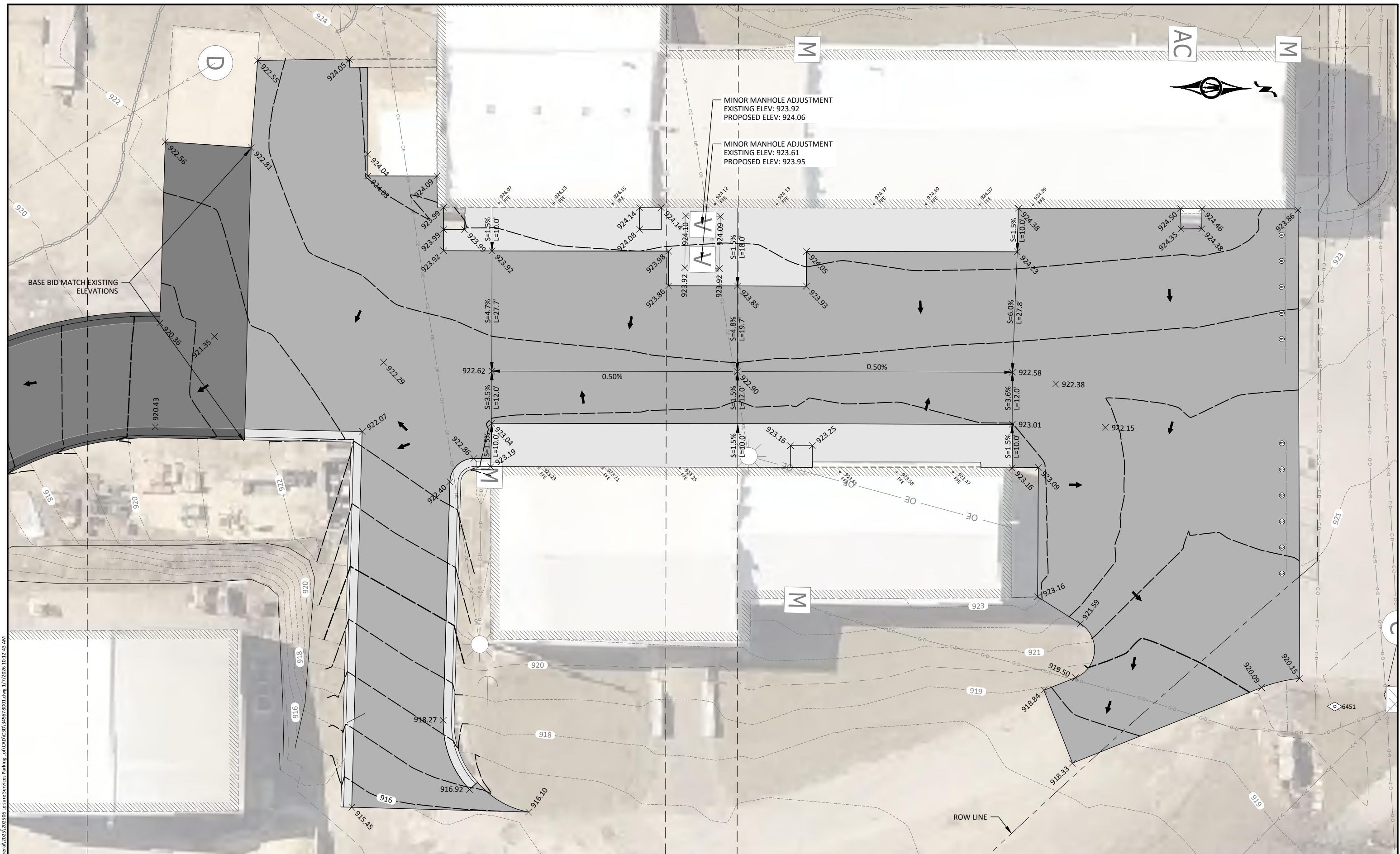


401 FIRST ST SE, SUITE 201
CEDAR RAPIDS, IOWA 52401
Phone: (319) 362-3219
Email: CedarRapids@bolton-menk.com
www.bolton-menk.com

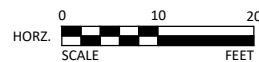
DESIGNED	REV	DESCRIPTION	DATE
PJR			
DRAWN	PJR		
CHECKED	DEM		
CLIENT PROJ. NO.	202506		

CITY OF WAVERLY, IOWA		SHEET D.01
2026 LEISURE SERVICES PARKING LOT		
LAYOUT PLAN		

© Bolton & Menk, Inc. 2026. All Rights Reserved
WAVERY, IA 52246
1/17/2025 10:12:40 AM



© Bolton & Menk, Inc. 2026, All Rights Reserved
H:\WAVERLY_CI\AGeneral\2025\2025-06 Leisure Services Parking Lot\CAD\C3D\345678D01.dwg 1/7/2026 10:12:43 AM



401 FIRST ST SE, SUITE 201
CEDAR RAPIDS, IOWA 52401
Phone: (319) 362-3219
Email: CedarRapids@bolton-menk.com
www.bolton-menk.com

DESIGNED	REV	DESCRIPTION	DATE
PJR			
DRAWN			
PJR			
CHECKED			
DEM			
CLIENT PROJ. NO. 202506			

CITY OF WAVERLY, IOWA

2026 LEISURE SERVICES PARKING LOT

GRADING PLAN

SHEET

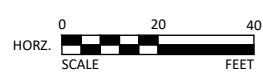
0.02 |

REMOVAL OF ASPHALT

REMOVAL OF GRAVEL

SAWCUT PAVEMENT

CLEARING AND GRUBBING



401 FIRST ST SE, SUITE 201
CEDAR RAPIDS, IOWA 52401
Phone: (319) 362-3219
Email: CedarRapids@bolton-menk.com
www.bolton-menk.com

DESIGNED	REV	DESCRIPTION	DATE
PJR			
DRAWN			
PJR			
CHECKED			
DEM			
CLIENT PROJ. NO.			
202506			

CITY OF WAVERLY, IOWA
2026 LEISURE SERVICES PARKING LOT
REMOVAL PLAN

SHEET
Q.01

© Bolton & Menk, Inc. 2026. All Rights Reserved.
WAVERY_IOWA_2026_Leisure_Services_Parking_Lot_CADD_2025.dwg 2/2/2025 8:40:53 AM