



STATE OF IOWA

CHESTER J. CULVER
GOVERNOR

DEPARTMENT OF PUBLIC DEFENSE
IOWA HOMELAND SECURITY AND
EMERGENCY MANAGEMENT DIVISION

PATTY JUDGE
LT. GOVERNOR

DAVID L. MILLER, ADMINISTRATOR

Historical and Architectural Reconnaissance Survey for 2008 Flood Projects in Waverly, Bremer County

HADB 09-020

Surveyors: Marlys Svendsen & Justine Zimmer

Date Submitted: March 27, 2009

Waverly, Bremer County

Reconnaissance Survey

Date: 3/27/2009

Surveyors: Marlys Svendsen
& Justine Zimmer

i. Introduction and Purpose

On January 22 and 23, 2009 Zimmer and Svendsen made an inspection of approximately 772 addresses included on a combined list of pending FEMA projects in Waverly¹ and all addresses listed on the Residential Substantial Damage Estimator (RSDE). The addresses were designated as either 403 Emergency Health and Safety Demolition projects, 404 Hazard Mitigation Buy-Out projects, or did not have a project identified at the time the field inspection was completed. In addition several addresses on the list are part of potential historic districts but are not flood-affected properties.

The overall goal for the reconnaissance survey in Waverly was to comply with Section 106 of the National Historic Preservation Act of 1966. The purpose of the reconnaissance survey was four fold:

- a. To determine whether the list appeared to include all pending properties.
- b. To determine whether or not any of the addresses were part of a potential NRHP eligible historic district.
- c. For potential mitigation purposes, to identify properties with a potential for architectural salvage.
- d. Also for mitigation purposes, to identify other potential measures that could be undertaken in the event a potential historic district was identified.

ii. Reconnaissance Survey

Zimmer and Svendsen completed a reconnaissance survey of properties located in residential neighborhoods along waterways scattered throughout Waverly including the Cedar River and feeder creeks. The SHPO had previously completed no individual determinations of eligibility for properties included on the combined list in these neighborhoods prior to completion of this reconnaissance survey. Because some of the properties on the expanded list are designated as 404 projects, the APEs were considered to include properties located along the facing blocks of each listed address so that potential districts could be evaluated. The status of contributing and noncontributing buildings within potential districts was evaluated regardless of the type of project being undertaken. Also, because boundaries of potential districts extended beyond the properties on the RSDE list, the property review list was expanded slightly to include these resources.

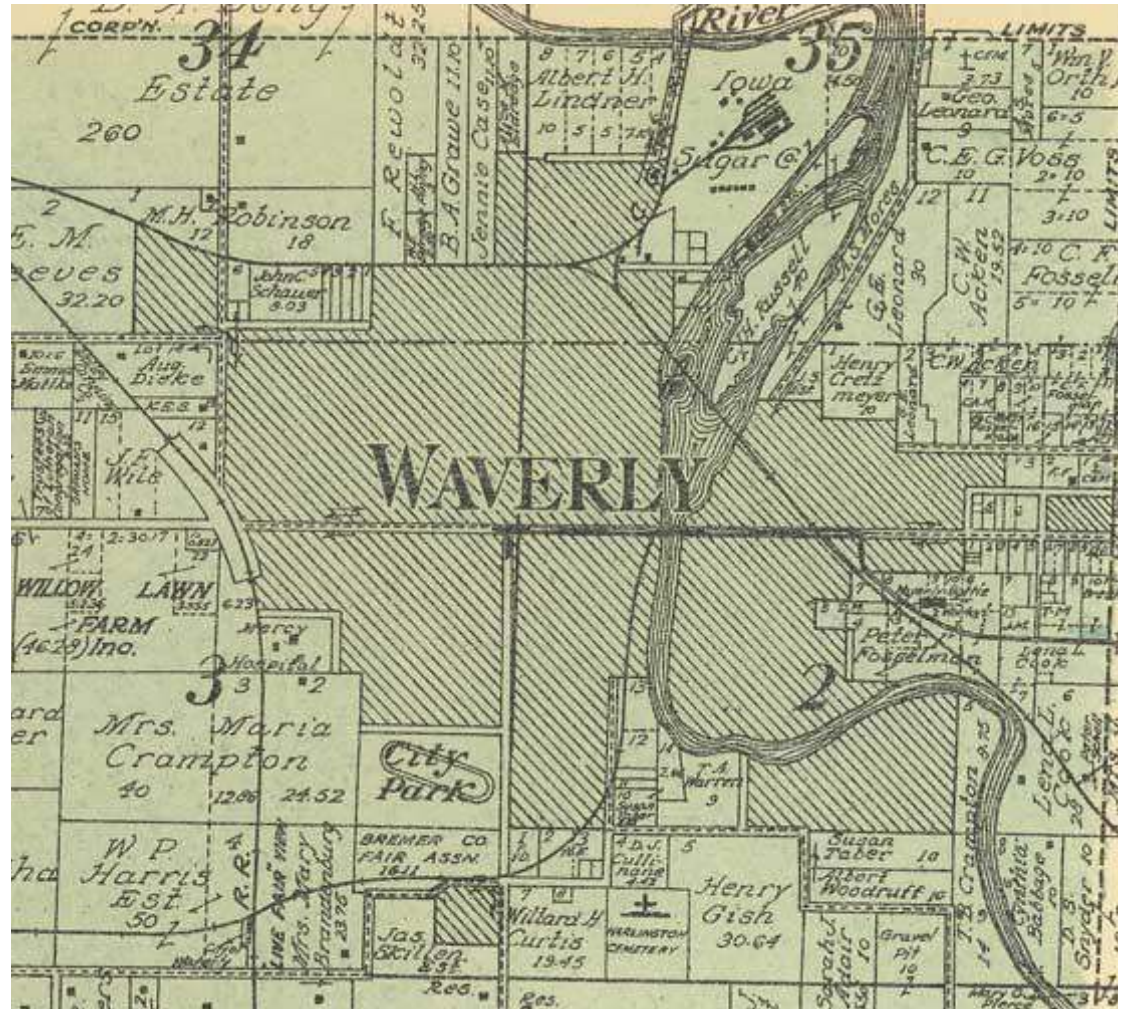
¹ From the 1763 Demolition Data Base as maintained by Kathy McCarty, Debris – Administrative Specialist, FEMA, AFO Cedar Rapids 1/2009.

Historical Background²

Waverly was established in 1853 along the Cedar River in Waverly Township located in southeastern Bremer County. It was designated as the county seat for Bremer County the same year that the county was officially organized and was formally incorporated in 1859. Like most Iowa towns established before the Civil War, growth during the early 1860s was deferred until after the war came to a close. Waverly's first railroad, the Cedar Falls and Minnesota Railroad was extended to Waverly in 1864. Eventually track was also laid for other branch lines and an electric interurban. By 1917 track for branch lines was absorbed by the Chicago and Great Western Railroad and the Chicago, Rock Island and Pacific Railroad. Track for the electric interurban – the Waterloo, Cedar Falls, and Northern – was laid in 1910 but usage was never as substantial as predicted.

Waverly grew in the manner typical of other Iowa county seats in the late 19th and early 20th century. Its commercial center extended along the east-west route of Bremer Avenue on both sides of the Bremer Avenue Bridge that crossed the L-shaped course of the Cedar River as it passed through the center of town. The county

Standard Atlas of Bremer County Iowa, Geo. A. Ogle and Co., 1917



² The historical background information is largely drawn from the *Waverly, Iowa: An Architectural Heritage*, (Waverly, Iowa: City of Waverly), 1977.

courthouse was located outside of the commercial area on a slight prominence at the east end of Bremer Avenue. Residential districts grew up in the four quadrants formed by the intersecting main street and river. The broad, generally flat profile of both the business district and early residential neighborhoods saw the regular occurrence of flooding resulting in the gradual replacement of most first generation frame building stock. German immigrants were among the largest ethnic group to populate Waverly during the 19th century establishing religious institutions with ethnic affiliations such as St. Paul’s Lutheran Church in the northwest quadrant, St. Mary’s Roman Catholic Church in southeast quadrant, and the German Methodist Church.

Bremer County and its county seat of Waverly prospered during the late 19th and early 20th century becoming a retail and professional services center for Bremer County and sections of adjacent Butler County. The county’s standing as the “Dairy Spot of Iowa,” gave rise to a number of dairy industries including a manufacturing plant operated by the Carnation Milk Products Company for the production of condensed milk in the 1920s. Population stood at 16,300 people in 1900 before the growth rate slowed before World War I. By 1930 population topped 17,000. Expansion of a Lutheran seminary in Waverly first located in the community in 1879 through the relocation of Wartburg College to the community in 1939 was a cultural and economic stimulus for the community. Waverly continued to add a 1,000 people per decade until 1950 when the post-War boom saw growth accelerate to more than 21,000 by 1960. During the past 50 years population has slowed somewhat topping out at 23,325 in 2000.

Individual Resources

108 potential individually NRHP-eligible properties were identified from the list of 772 resources. About 40 of these are scattered throughout the city while 68 are clustered in one of the two large potential historic districts identified and described below. Individual houses identified as potentially NRHP-eligible date from 1865 through 1958. Building types include a wide range of vernacular single-family house forms, a number of high style designs, and a large number dating from the early to mid-20th century. The 40 individual properties discussed below are grouped by street address within quadrant. Photographs for potentially individually NRHP-eligible properties outside of districts appear at the beginning of section v. Maps and Photographs with potentially individually NRHP-eligible properties inside districts grouped with other district photos later in section v.

Northwest Waverly:

All potential individually NRHP-eligible properties in this quadrant are located in the *Northwest Historic District*.

Northeast Waverly:

No potential individually NRHP-eligible properties were identified in this quadrant.

Southeast Waverly:

- *House, 200 6th Ave SE* (1939)
- *House, 716 3rd St SE* (1922)
- *House, 205 7th Ave SE* (1925)

Southwest Waverly:

- *House, 212 1st Ave SW* (1888)
- *House, 416 1st Ave SW* (1893)
- *House, 614 1st Ave SW* (1914)
- *House, 700 1st Ave SW* (1913)
- *House, 322 1st St SW* (1897)
- *House, 502 1st St SW* (1880)
- *House, 318 2nd Ave SW* (1890)
- *House, 401 2nd Ave SW* (1876)
- *House, 717 2nd Ave SW* (1913)
- *House, 122 2nd St SW* (1956)
- *House, 215 2nd St SW* (1898)
- *House, 220 2nd St SW* (1908)
- *House, 308 2nd St SW* (1900)
- *House, 415 2nd St SW* (1932)
- *House, 508 2nd St SW* (1915)
- *House, 418 3rd Ave SW* (1915)
- *House, 419 3rd Ave SW* (1919)
- *House, 606 3rd Ave SW* (1902)
- *House, 115 3rd St SW* (1865)
- *House, 208 3rd St SW* (1925)
- *House, 215 3rd St SW* (1916)
- *House, 310 3rd St SW* (1910)
- *House, 315 3rd St SW* (1926)
- *House, 614 3rd St SW* (1910)
- *House, 201 4th St SW* (1928)
- *House, 204 4th St SW* (1888)
- *House, 214 4th St SW* (1892)
- *House, 502 4th St SW* (1900)
- *House, 302 5th Ave SW* (1951)
- *House, 420 5th Ave SW* (1910)
- *House, 514 5th Ave SW* (1894)
- *House, 310 5th St SW* (1920)
- *House, 308 6th Ave SW* (1875)
- *House, 202 7th St SW* (1898)
- *House, 214 7th St SW* (1941)
- *House, 321 8th St SW* (1948)
- *House, 701 W Bremer Ave* (1929)

District Resources:

Two potential NRHP-eligible historic districts were identified that included flood-affected properties in Waverly. The district discussions below include a brief area description, historical background statement, and significance summary.



Paul's Evangelical Lutheran Church (1907) 2nd Ave NW & 2nd St NW

Northwest Historic District

a. Area Description

The *Northwest Historic District* comprises about 30 blocks in the northwest quadrant of Waverly located north of 1st Avenue NW and west of Kohlmann Park, a four-block long city park that extends along the Cedar River. The lots have generally rectangular shapes with some following the original plat lines for lots and others subdivided into smaller parcels as the neighborhood developed through the years. Because of the broad flood plain along the river, the streets were easily laid out in a rigid grid system. The former Chicago and Great Western Railroad tracks that roughly mark the northern edge of the historic district, extend east and west just north of 6th Avenue NW. A slight rise along the campus of Wartburg College and Wartburg Drive/8th Street NW marks the west edge of the district.

Single-family houses throughout the district are a mix of 1, 1½, and 2-story frame, brick, concrete block, and stucco residences. Many have a combination of two or three materials with frame finishes including clapboard, beveled siding, a variety of decorative cut shingles, and square-cut shingle siding. Some have been altered with the application of synthetic siding, installation of replacement windows, porch enclosures, and construction of wings or, in a few cases, attached garages. Other landmarks that anchored the neighborhood and encouraged residential growth over time were three historic churches including St. Paul's Lutheran Church shown at left located in the southeast corner of the district. Waverly Public High St.

School occupied a full city block between 1st and 2nd avenues and 3rd and 4th streets by the early 1920s.

All primary resources were built between decades following the Civil War and the post-World War II period with a substantial majority constructed in the decades between 1900 and 1930. Houses include vernacular patternbook designs including a number of American Four-Square houses, Gable-Front and Wings houses, and most other house forms built in Iowa before and after 1900. Architect-designed dwellings include good examples of Late Queen Anne Style residences, Classical Revival Style houses, Craftsman Style cottages and bungalows, Tudor Revival houses and smaller, derivative Tudor cottages, Colonial Revival Style houses, Cape Cod houses, and eclectic designs. Several well-preserved concrete block houses are among the vernacular residences distinguishing this neighborhood. The *Northwest Historic District* contains 49 key contributing or individually NRHP-eligible primary resources, 158 contributing resources and 14 noncontributing resources. The district contains an undetermined number of secondary resources such as garages with a high state of preservation making many of these contributing as well.

b. Historical Background

The *Northwest Historic District* includes portions of M.N. LeValley’s Addition and the Harmon and LeValley’s Addition to the city of Waverly. Street names in the district now include numbered streets and avenues but the addition originally had named streets - Jefferson, Market, Webster, Fremont, Fulton, and Penn for 1st Avenue NW through 6th Avenue NW and West Water (Harlington), Elm, Linn, Locust, Oak, Aspen, Cherry and Apple for 1st Street NW through 8th Street NW. In 1875 records show that LeValley retained ownership of a six-block area called “LeValley’s Reserve” located between 2nd and 3rd avenues and 6th and 9th streets.



**500 block
of 2nd
Street NW,
*Northwest
Historic
District*,
looking
northwest**

This continues to appear on the 1892 Sanborn Map. Five years later, growth in the northwest portion of the city saw the LeValley Reserve abandoned to blocks for new housing lots with the southwest corner of the reserve becoming part of a two-block campus occupied by Wartburg College (1st Avenue NW to 3rd Avenue NW by 8th Street NW to 9th Street NW).

The northwest blocks of the city were among several areas favored by German families during the 19th and early 20th centuries. In 1872 these German families organized St. Paul’s Evangelical Lutheran Church and took over an existing church north of the present church in 1886. The current building located at the northeast corner of 3rd Avenue NW and 2nd Street NW was constructed in 1907-1908. Pastors of the early church frequently served as professors at Wartburg College, which began as a German Lutheran teacher training seminary in Waverly in 1879. The college’s two-block campus located along the west edge of the Northwest Historic District by 1900, remained and expanded in subsequent years. Proximity to the college saw housing for faculty members built in the district and gave rise to the establishment of rooming houses or rented rooms in some of the nearby large homes.

The *Northwest Historic District* contains approximately 221 primary buildings. Of these, 49 are potentially individually NRHP-eligible properties that serve as key contributing resources within the district. In the list of district properties on the following pages, potentially individually significant properties are designated as “Key.” All have been found potentially individually NRHP-eligible under Criterion C for their architectural significance. The balance of the properties on the list includes 158 contributing resources and 14 noncontributing resources. Together, the key resources and other contributing resources serve as good examples of the architectural styles and vernacular residential building forms that predominated in Iowa during the late 19th century and first half of the 20th century. The mix of large and medium-scale houses of varied materials in simple to elaborate designs also reflects the socially and economically diverse make-up found in residential neighborhoods in small to medium-scale communities in the state.

Northwest Historic District Resources

Street #	Street	Year Built	Key Resource Individual NRHP-Eligible	Contributing & Noncontributing Resources
208	1st Ave NW	1893		Contributing
214 B	1st Ave NW	1880		Noncontributing
214	1st Ave NW	1880	Key	Contributing
220	1st Ave NW	1893		Contributing
407	1st Ave NW	1880		Contributing
408	1st Ave NW	1896		Contributing
415	1st Ave NW	1908		Contributing
416	1st Ave NW	1912		Contributing

Street #	Street	Year Built	Key Resource Individual NRHP-Eligible	Contributing & Noncontributing Resources
420	1st Ave NW	1925		Contributing
522	1st Ave NW	1888		Contributing
614	1st Ave NW	1915	Key	Contributing
618	1st Ave NW	1901		Contributing
626	1st Ave NW	1904	Key	Contributing
702	1st Ave NW	1902		Contributing
709	1st Ave NW	1908	Key	Contributing
710	1st Ave NW	1890		Contributing
715	1st Ave NW	1948		Contributing
403	1st St NW	1888		Contributing
413	1st St NW	1936		Contributing
423	1st St NW	1888		Contributing
510	1st St NW	1938	Key	Contributing
515	1st St NW	1901	Key	Contributing
516	1st St NW	1961		Contributing
523	1st St NW	1888		Contributing
524	1st St NW	1921	Key	Contributing
603	1st St NW	1903		Contributing
609	1st St NW	1927		Contributing
204	2nd Ave NW	1880		Contributing
212	2nd Ave NW	1919	Key	Contributing
215	2nd Ave NW	1898		Contributing
219	2nd Ave NW	2000		Noncontributing
220	2nd Ave NW	1890	Key	Contributing
308	2nd Ave NW	1923		Contributing
314	2nd Ave NW	1898		Contributing
322	2nd Ave NW	1905		Contributing
408	2nd Ave NW	1888		Contributing
417	2nd Ave NW	1949		Contributing
502	2nd Ave NW	1888		Contributing
503	2nd Ave NW	1910		Contributing

Street #	Street	Year Built	Key Resource Individual NRHP-Eligible	Contributing & Noncontributing Resources
116	2nd St NW	1920	Key	Contributing
203	2nd St NW	1893		Contributing
217	2nd St NW	1900		Contributing
223	2nd St NW	Razed		-
309	2nd St NW	1932		Contributing
315	2nd St NW	1893		Contributing
321	2nd St NW	1935	Key	Contributing
322	2nd St NW	1920		Contributing
409	2nd St NW	1955		Contributing
415	2nd St NW	1899		Contributing
416	2nd St NW	1900		Contributing
422	2nd St NW	1961		Contributing
423	2nd St NW	1950		Contributing
502	2nd St NW	1898	Key	Contributing
503	2nd St NW	1900	Key	Contributing
507	2nd St NW	1916	Key	Contributing
510	2nd St NW	1927		Contributing
515	2nd St NW	1900	Key	Contributing
516	2nd St NW	1920		Contributing
518	2nd St NW	1940		Contributing
519	2nd St NW	1897	Key	Contributing
522	2nd St NW	1893		Contributing
523	2nd St NW	1905		Contributing
202	3rd Ave NW	1865		Contributing
204	3rd Ave NW	1919		Contributing
214	3rd Ave NW	1905		Contributing
218	3rd Ave NW	1930		Contributing
306	3rd Ave NW	1903		Contributing
314	3rd Ave NW	1912		Contributing
315	3rd Ave NW	1930		Contributing
322	3rd Ave NW	1913		Contributing

Street #	Street	Year Built	Key Resource Individual NRHP- Eligible	Contributing & Noncontributing Resources
420	3rd Ave NW	1916	Key	Contributing
504	3rd Ave NW	1896		Contributing
522	3rd Ave NW	1898		Contributing
602	3rd Ave NW	1898		Contributing
608	3rd Ave NW	1908		Contributing
616	3rd Ave NW	1890		Contributing
216	3rd St NW	1890		Contributing
303	3rd St NW	1897	Key	Contributing
316	3rd St NW	1920	Key	Contributing
317	3rd St NW	1935		Contributing
320	3rd St NW	1925		Contributing
321	3rd St NW	1893		Contributing
403	3rd St NW	1903		Contributing
408	3rd St NW	1920	Key	Contributing
420	3rd St NW	1890		Contributing
421	3rd St NW	1925		Contributing
509	3rd St NW	1950		Contributing
510	3rd St NW	1890		Contributing
518	3rd St NW	1930	Key	Contributing
520	3rd St NW	1920	Key	Contributing
523	3rd St NW	1958	Key	Contributing
615	3rd St NW	1925		Contributing
616	3rd St NW	1928		Contributing
617	3rd St NW	1935	Key	Contributing
618	3rd St NW	1924		Contributing
623	3rd St NW	1905	Key	Contributing
92	4th Ave NW	1955	Key	Contributing
96	4th Ave NW	1870		Contributing
104	4th Ave NW	1890		Noncontributing
106	4th Ave NW	1922		Contributing
109	4th Ave NW	1925		Contributing

Street #	Street	Year Built	Key Resource Individual NRHP-Eligible	Contributing & Noncontributing Resources
115	4th Ave NW	1900		Contributing
205	4th Ave NW	1938		Contributing
216	4th Ave NW	1896	Key	Contributing
220	4th Ave NW	1921	Key	Contributing
302	4th Ave NW	1915		Contributing
307	4th Ave NW	1930		Contributing
309	4th Ave NW	1900		Noncontributing
311	4th Ave NW	Ca. 2008		Noncontributing
312	4th Ave NW	1925		Contributing
322	4th Ave NW	1888		Contributing
402	4th Ave NW	1925		Contributing
406	4th Ave NW	1893		Contributing
415	4th Ave NW	1948		Contributing
416	4th Ave NW	1893		Contributing
420	4th Ave NW	1880		Contributing
502	4th Ave NW	1888		Contributing
510	4th Ave NW	1898		Contributing
520	4th Ave NW	1896		Contributing
521	4th Ave NW	1977		Noncontributing
602	4th Ave NW	1890		Contributing
608	4th Ave NW	1911	Key	Contributing
620	4th Ave NW	1940		Contributing
621	4th Ave NW	1908		Contributing
203	4th St NW	1900		Contributing
211	4th St NW	1908		Contributing
217	4th St NW	1905		Contributing
219	4th St NW	1927		Contributing
303	4th St NW	1893		Contributing
317	4th St NW	1916		Contributing
320	4th St NW	1995		Noncontributing
323	4th St NW	1888		Contributing

Street #	Street	Year Built	Key Resource Individual NRHP-Eligible	Contributing & Noncontributing Resources
403	4th St NW	1920	Key	Contributing
411	4th St NW	1913		Contributing
414	4th St NW	1898		Contributing
417	4th St NW	1902	Key	Contributing
421	4th St NW	1917	Key	Contributing
424	4th St NW	Ca. 2008		Noncontributing
508	4th St NW	1935	Key	Contributing
521	4th St NW	1934	Key	Contributing
522	4th St NW	1888		Contributing
523	4th St NW	1908	Key	Contributing
601	4th St NW	1974		Noncontributing
610	4th St NW	1912		Contributing
611	4th St NW	1934		Contributing
616	4th St NW	1900	Key	Contributing
617	4th St NW	1893		Contributing
619	4th St NW	1898		Contributing
87	5th Ave NW	1888		Contributing
108	5th Ave NW	1900		Contributing
114	5th Ave NW	1955		Contributing
120	5th Ave NW	1896		Contributing
209	5th Ave NW	1928		Contributing
210	5th Ave NW	1932		Contributing
222	5th Ave NW	1900		Contributing
308	5th Ave NW	1949		Contributing
311	5th Ave NW	1896		Contributing
312	5th Ave NW	1928		Contributing
316	5th Ave NW	2002		Noncontributing
420	5th Ave NW	1896		Contributing
450	5th Ave NW	1896		Contributing
502	5th Ave NW	1895		Contributing
508	5th Ave NW	1925		Contributing

Street #	Street	Year Built	Key Resource Individual NRHP-Eligible	Contributing & Noncontributing Resources
509	5th Ave NW	1935		Contributing
510	5th Ave NW	1967		Noncontributing
602	5th Ave NW	1920		Contributing
608	5th Ave NW	1890		Contributing
609	5th Ave NW	1948		Contributing
614	5th Ave NW	1922	Key	Contributing
615	5th Ave NW	1948		Contributing
617	5th Ave NW	1949		Contributing
620	5th Ave NW	1908		Contributing
702	5th Ave NW	1937		Noncontributing
203	5th St NW	1908	Key	Contributing
213	5th St NW	1910	Key	Contributing
217	5th St NW	1896	Key	Contributing
220	5th St NW	1898		Contributing
223	5th St NW	1880	Key	Contributing
302	5th St NW	1888		Contributing
309	5th St NW	1893		Contributing
310	5th St NW	1935		Contributing
315	5th St NW	1898		Contributing
316	5th St NW	1898		Contributing
322	5th St NW	1917		Contributing
323	5th St NW	1910	Key	Contributing
415	5th St NW	1908		Contributing
419	5th St NW	1959		Contributing
422	5th St NW	1914	Key	Contributing
423	5th St NW	1898		Contributing
516	5th St NW	1900		Contributing
519	5th St NW	1908	Key	Contributing
523	5th St NW	1893		Contributing
524	5th St NW	1898		Contributing
612	5th St NW	1913		Contributing

Street #	Street	Year Built	Key Resource Individual NRHP-Eligible	Contributing & Noncontributing Resources
616	5th St NW	1898		Contributing
624	5th St NW	1908		Contributing
111	6th St NW	1893		Contributing
117	6th St NW	1971		Noncontributing
121	6th St NW	1905	Key	Contributing
203	6th St NW	1890	Key	Contributing
210	6th St NW	1947		Contributing
215	6th St NW	1941	Key	Contributing
216	6th St NW	1888		Contributing
221	6th St NW	1894		Contributing
224	6th St NW	1888		Contributing
303	6th St NW	1894		Contributing
304	6th St NW	1900		Contributing
316	6th St NW	1898		Noncontributing
317	6th St NW	1926		Contributing
323	6th St NW	1896		Contributing
408	6th St NW	1898		Contributing
123	7th St NW	1903	Key	Contributing
503	7th St NW	1916	Key	Contributing
511	7th St NW	1914		Contributing
525	7th St NW	1901		Contributing
611	7th St NW	1940		Contributing
615	7th St NW	1890		Contributing
621	7th St NW	1890		Contributing
703	7th St NW	1890		Contributing

c. Significance

In the opinion of the surveyors, there are 49 potentially significant individual NRHP properties with another 158 contributing resources and 14 noncontributing resources in the *Northwest Historic District*. The district derives significance under Criterion C with several resources and the district as a whole likely significant under Criterion A under the category “Community



Mary's Catholic Church, Photo available online at: <http://stmarycatholicchurch.tripod.com/>

river to the slightly higher blocks to the northeast. St. Mary's Catholic Church (left) is located north of the district between the residential area and the downtown that is a block further north. Single-family houses throughout the district are a mix of 1, 1½, and 2-story frame, brick, and stucco residences. Many have a combination of two or three materials with frame finishes including clapboard, beveled siding, a variety of decorative cut shingles, and square-cut shingle siding.

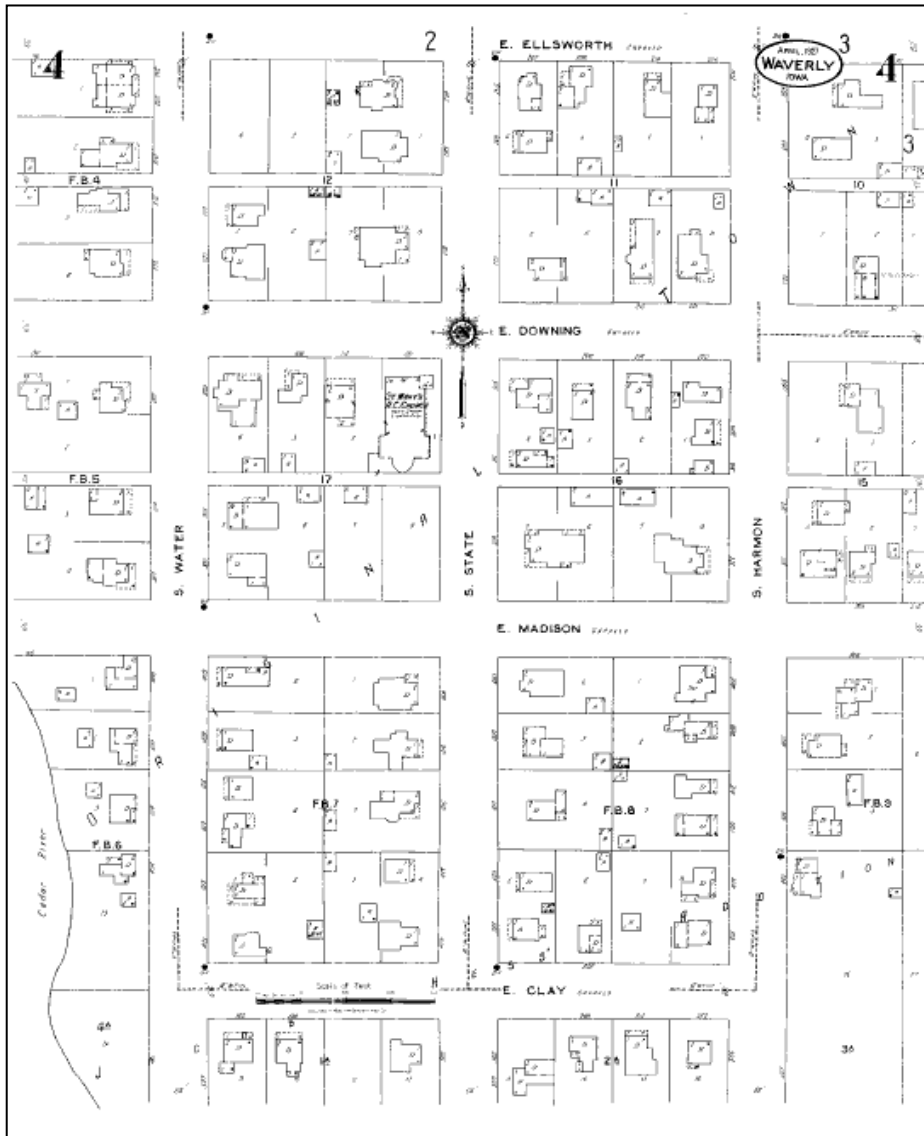
Development.” Because of the size of this potential district both physically and in terms of the wide diversity of resources, boundaries of the district may merit further evaluation during the intensive survey phase. If required, the area may be subdivided into multiple districts after a more comprehensive historical and architectural survey is completed.

Southeast/Old Fourth Ward Historic District

a. Area Description

The *Southeast/Old Fourth Ward Historic District* is part of a larger neighborhood that comprises several dozen blocks in the southeast quadrant of Waverly. The historic district containing flood affected properties is somewhat smaller with an irregular boundary around sections of about 10 blocks included. The historic district is located along an L-shaped section of the Cedar River, which forms its west and south edges. An irregular boundary on the north and east sides includes facing houses along 2nd Avenue SE and the center line of 4th Street SE, 3rd Avenue SE, and 3rd Street SE. The lots have generally rectangular shapes with most following the original lot lines or double-lot parcels and others subdivided into smaller parcels as the neighborhood developed through the years. The streets are laid out in a grid system with dead-ends for the avenues as they approach the river. Access across the Cedar River to the south is via the 3rd Street SE Bridge.

Crestwood Park, a low-lying open space east of 4th Street SE adjoins the diagonal course of the former Chicago and Great Western Railroad tracks located east of the historic district blocks. Downtown Waverly businesses extend along East Bremer Avenue about a block to the north of the historic district. Terrain changes in the district include a gentle upward slope from the lowest areas immediately along the



1927 Sanborn Map

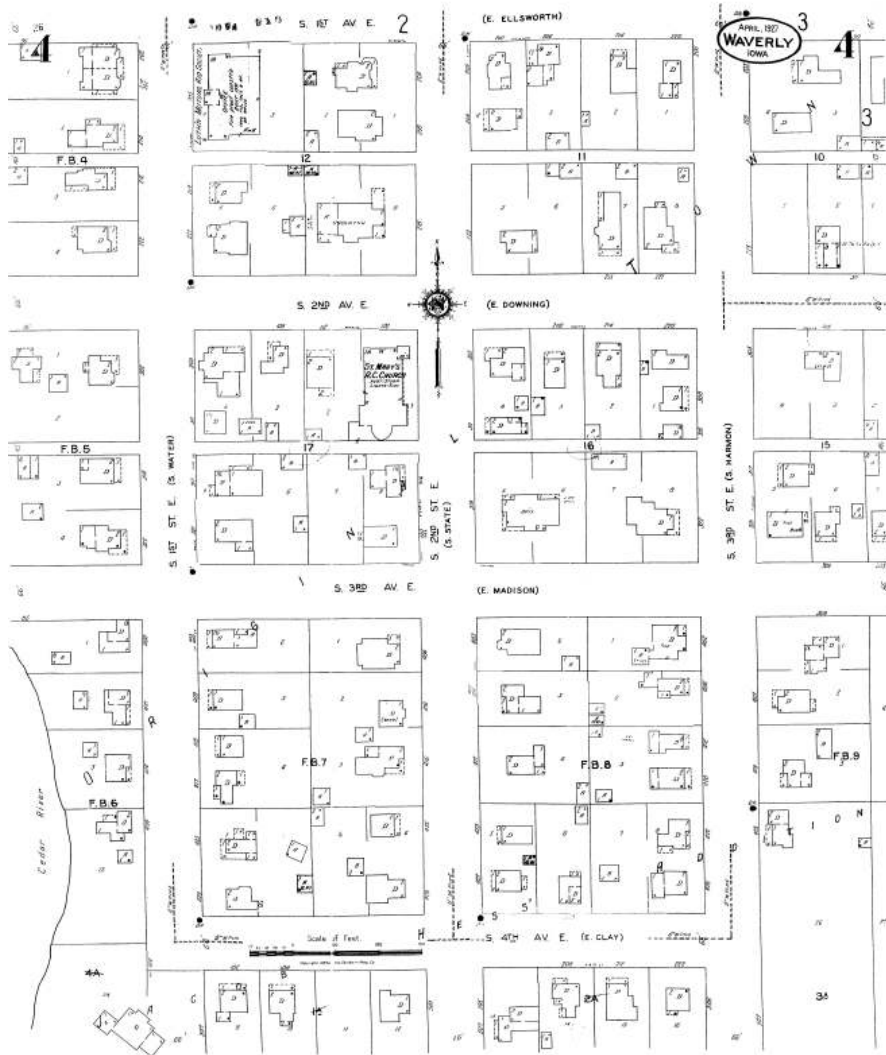
Houses in the district were built between the 1880s and the 1950s with the decades of the 1890s, 1900s, and 1920s seeing one to two houses constructed yearly. Houses include patternbook designs that reflect architectural style preferences such as Late Queen Anne decorative finishes and millwork from the 1890s with later patternbook plans featuring Craftsman Style cottages and bungalows, derivative Tudor Revival cottages, Colonial St. Revival Style elements. Though no architect-designed houses have been identified at the time this report was completed, it is likely that some will be identified as individual site inventory forms are prepared. The *Southeast/Old Fourth Ward Historic District* contains 19 key contributing or individually NRHP-eligible primary resources, 59 contributing resources, and 4 noncontributing resources. The district contains an undetermined number of secondary resources such as garages with a high state of preservation making many of these contributing as well.

b. Historical Background

The *Southeast/Old Fourth Ward Historic District* includes a portion of the historic Fourth Ward of the city of Waverly. Street names in the district now include numbered streets and avenues but the addition originally had named streets. The historic district comprises portions of the Original Town Plat and Hess's Addition along the south edge. St. Mary's Roman Catholic Church was established by German Catholics in Waverly before the Civil War with a church located on "Catholic Hill" in northeast Waverly. After the turn of the 20th century, members sought a location closer to the center of town and in 1912-1913 built a Romanesque Revival Style brick church at 120 2nd Avenue SE (photo previous page). By this time the Old Fourth Ward

neighborhood was a favored residential district attracting Waverly professionals and prominent business families as residents. Future research will likely reveal a more complete social and economic profile of the neighborhood. The area continued to grow steadily during the first half of the 20th century with an average of more than one house built each year between 1900 and 1960.

Sanborn Map, 1927 updated to 1943



The *Southeast/Old Fourth Ward Historic District* was substantially developed by the late 1920s. Street and avenue names continued to use their original names – Water, State and Madison (1st, 2nd, and 3rd avenues) and Downing, Madison and Clay (2nd, 3rd and 4th streets). The north-south avenues were the dominant streets throughout the neighborhood, even when the plat suggested orientation of buildings in a different direction. As a result the north-south avenues were the first to be paved as is shown in the 1927 map at left. The east-west streets remained unpaved. The 1927 Sanborn Map also shows vacant lots scattered throughout the neighborhood while most existing houses had single-car garages in place on the eve of the Great Depression.

By the end of World War II there were fewer than a dozen building sites left in the Old Fourth Ward neighborhood. These were soon filled by single-story bungalows and a handful of new Ranch/Rambler Style houses. The 1943 Sanborn map at left shows street names changed to numbered southeast avenues and streets following the adoption of the system of quadrants by the Waverly City Council for street names.

Southeast/Old Fourth Ward Historic District contains approximately 82 primary buildings. Of these, 19 are potentially individually NRHP-eligible properties that serve as key contributing resources within the district. In the list of district properties on the following pages, potentially individually significant properties are designated as “Key.” All have been found potentially individually NRHP-eligible under

Criterion C for their architectural significance. The balance of the properties on the list includes 59 contributing resources and 4 noncontributing resources. Together, the key resources and other contributing resources serve as good examples of the architectural styles and vernacular residential building forms that predominated in Iowa during the late 19th century and first half of the 20th century. The mix of large and medium-scale houses of varied materials in moderately simple to elaborate designs seen here also reflects the socially and economically diverse make-up found in residential neighborhoods in small to medium-scale communities in the state.

400 block of 2nd Street SE, Southeast/Old Fourth Ward Historic District, looking northwest



Southeast/Old Fourth Ward Historic District Resources

Street Number	Street	Year Built	Key Resource Individual NRHP-Eligible	Contributing & Noncontributing Resources
302	1st St SE	1935	Key	Contributing
308	1st St SE	1956		Contributing
309	1st St SE	1941		Contributing
314	1st St SE	1950		Contributing
317	1st St SE	1893		Contributing
321	1st St SE	1900	Key	Contributing
322	1st St SE	1901		Contributing
400	1st St SE	ca. 1940		Contributing
401	1st St SE	1920		Contributing
402	1st St SE	1956		Contributing
409	1st St SE	1920		Contributing
413	1st St SE	1915	Key	Contributing
414	1st St SE	1935		Contributing
419	1st St SE	1888		Contributing
424	1st St SE	1993		Noncontributing
425	1st St SE	1880		Contributing
429	1st St SE	1901		Contributing
500	1st St SE	1939		Contributing
88	2nd Ave SE	1895	Key	Contributing
91	2nd Ave SE	1925	Key	Contributing
102	2nd Ave SE	1910		Contributing
208	2nd Ave SE	1922		Contributing
214	2nd Ave SE	1913		Contributing
215	2nd Ave SE	1875		Contributing
315	2nd Ave SE	ca. 1900		Contributing
316	2nd Ave SE	ca. 1900		Contributing
322	2nd Ave SE	1911	Key	Contributing
215	2nd St SE	1960		Contributing
221	2nd St SE	1925		Contributing

Street Number	Street	Year Built	Key Resource Individual NRHP-Eligible	Contributing & Noncontributing Resources
315	2nd St SE	1950		Contributing
316	2nd St SE	1900		Contributing
317	2nd St SE	1904		Contributing
319	2nd St SE	1900		Contributing
320	2nd St SE	1931		Contributing
403	2nd St SE	1898	Key	Contributing
404	2nd St SE	1910		Contributing
410	2nd St SE	1938	Key	Contributing
411	2nd St SE	1920		Contributing
416	2nd St SE	1925	Key	Contributing
417	2nd St SE	1920	Key	Contributing
422	2nd St SE	1935	Key	Contributing
423	2nd St SE	1880		Contributing
427	2nd St SE	1920		Noncontributing
428	2nd St SE	1880		Contributing
502	2nd St SE	1898		Contributing
508	2nd St SE	1954		Contributing
516	2nd St SE	1925		Contributing
517	2nd St SE	1925	Key	Contributing
110	3rd Ave SE	1959		Noncontributing
115	3rd Ave SE	1951		Contributing
315	3rd Ave SE	1904		Contributing
317	3rd Ave SE	1910		Contributing
403	3rd Ave SE	1888		Contributing
225	3rd St SE	1890		Contributing
305	3rd St SE	1933		Contributing
308	3rd St SE	ca. 1900		Contributing
310	3rd St SE	1908		Contributing
317	3rd St SE	1904		Contributing
322	3rd St SE	1890	Key	Contributing
323	3rd St SE	1925	Key	Contributing

Street Number	Street	Year Built	Key Resource Individual NRHP-Eligible	Contributing & Noncontributing Resources
402	3rd St SE	1924	Key	Contributing
406	3rd St SE	1893		Contributing
407	3rd St SE	1910	Key	Contributing
416	3rd St SE	1888		Contributing
419	3rd St SE	1894		Noncontributing
420	3rd St SE	1920		Contributing
422	3rd St SE	1940		Contributing
423	3rd St SE	1900		Contributing
426	3rd St SE	1900		Contributing
427	3rd St SE	1958		Contributing
503	3rd St SE	1948		Contributing
507	3rd St SE	1948		Contributing
509	3rd St SE	1900		Contributing
514	3rd St SE	1920		Contributing
517	3rd St SE	1957		Contributing
102	4th Ave SE	1893		Contributing
108	4th Ave SE	1906	Key	Contributing
208	4th Ave SE	1896	Key	Contributing
209	4th Ave SE	1925		Contributing
212	4th Ave SE	1888		Contributing
215	4th Ave SE	1948		Contributing
222	4th Ave SE	1901	Key	Contributing

c. Significance

In the opinion of the surveyors, there are 19 potentially significant individual NRHP properties with another 59 contributing resources and 4 noncontributing resources in the *Southeast/Old Fourth Ward Historic District*. The district derives significance under Criterion C with several resources and the district as a whole likely significant under Criterion A under the category “Community Development.” Because of the size of this potential district both physically and in terms of the wide diversity of resources, boundaries of the district may merit further evaluation during the intensive survey phase.

Historic District Summary

The two residential historic districts identified containing flood affected properties – the *Northwest Historic District* and the *Southeast/Old Fourth Ward Historic District* – are potentially eligible for the NRHP under Criteria A and C. They each contain well-preserved collections of dwellings that convey a sense of Waverly’s rich architectural heritage. At the same time, they tell the stories of ethnic and social diversity, educational institutional growth, economic trends, and residential development patterns in riverfront settings. Final boundaries for the two districts should be made after Iowa Site Inventory forms are prepared for individually eligible properties.

d. Survey Report Sources

Atlas of Bremer County, Iowa. Waverly, Iowa: Waverly Publishing Company, 1917.

Atlases of Bremer County. microfilm copies of atlases for 1875, 1894 and 1927, Waverly Public Library.

Bremer County History Book Committee. *Bremer County History, 1985.* Dallas, Texas: Taylor Publishing, 1985.

Grawe, Joseph F. *History of Bremer County, Iowa, Volumes I and II.* Chicago: S.J. Clarke Company, 1914.

History of Butler and Bremer Counties, Iowa. Springfield, Illinois: Union Publishing, 1883.

Page, William C. *Reconnaissance Historical and Architectural Survey of Black Hawk and Bremer Counties, Iowa, Volume I.* Black Hawk and Bremer Counties Preservation Partnership and State Historical Society of Iowa, August 21, 1992.

Sanborn Company Maps. New York: Sanborn Map Company, 1885, 1892, 1897, 1905, 1915, 1927, and 1927 updated to 1943.

Waverly building histories, miscellaneous bound volumes in reference collection, Waverly Public Library.

Waverly Heritage Days historical walking tour brochures for 1995, 1996, 1997, 1998, 1999 and 2000. Vertical file collection, Waverly Public Library.

iii. Mitigation Recommendations

a. Salvage Potential

The Waverly property list contains a number of potentially NRHP- eligible properties that may have the potential for architectural salvage based on exterior inspections as well as several worthy of whole-house salvage through moves if it is determined that they will be razed. Still others may be worthy of salvage based on interior inspections. It is recommended that before 404 projects begin, a specific salvage inspection be made to determine the feasibility of completing a salvage effort for both eligible and non-eligible properties.

In some cases, salvageable elements may include structural materials such as full-dimension lumber, foundation block and stone, or brick. In other cases, porch posts, balusters, columns, piers, door hoods, and brackets may be available for salvage. In other instances, worthy salvage may be limited to still unidentified interior building elements. Efforts should be made to support and encourage salvage by either a not-for-profit organization – existing or newly established, or another affiliate or designee of the applicant, the City of Waverly. Important side-effects of a salvage operation will be 1) support for sympathetic rehabilitation efforts for housing stock in surviving older neighborhoods located elsewhere in Waverly and 2) an important reduction in the amount of reusable building materials entering landfill sites. The concept of a well thought out salvage program versus standard debris removal makes common sense. The applicant could be encouraged to participate in such a program to avoid permanent loss of significant architectural materials by using post-disaster salvage operations in communities like New Orleans as program models.

A second type of salvage to be considered for a limited number of properties involves whole-house salvage or house moving. Once ownership for properties is transferred to the applicant, systematic investigation of house interiors will be possible. Buildings suitable for salvage most likely will be of frame construction, have detachable additions, and retain intact original exterior finishes presently or beneath synthetic sidings. A systematic interior and exterior inspection will need to be made to determine suitability for moving and rehabilitation costs. Due to limitations for reconnaissance survey work and lack of accessibility to building interiors, such an investigation was not undertaken by the IHSEMD survey team.

b. Intensive Surveys

Full documentation of the potentially individually NRHP-eligible properties is recommended through completion of Iowa Site Inventory Forms by the IHSEMD survey team. This will include forms for approximately 108 individual buildings. In addition, preparation of site forms for each of the two historic districts is recommended. In both cases the southeast and northwest quadrant neighborhoods will be affected by the loss of potentially individually significant and contributing resources. To mitigate this loss, completion of neighborhood intensive surveys for both the bounded district areas and adjacent blocks is recommended. Such surveys should include completion of either Multiple Property Documentation NRHP forms or NRHP district nominations. An

alternative to be considered is the preparation of NRHP district nominations in lieu of historic district site forms by the IHSEMD survey team. Coordination of all survey efforts should be carried out in conjunction with the Waverly Historic Preservation Commission with support from the Waverly Public Library and the Bremer County Historical Society. Completion of neighborhood surveys will provide a significant first step for intensive survey work in Waverly, a community with a rich architectural heritage and high level of community pride in its historic neighborhoods. It will also provide thorough documentation when flooding affects similar areas in future years.

a. Public Information Materials

Floods have been part of Waverly’s history for more than 150 years. The size of the impact on historic resources of the 2008 Flood measured in homes affected – more than 300 resources – suggests that public information materials should be prepared to assist owners in making practical, common sense decisions to protect their buildings. Abandonment of such a large number of potentially historic properties is not realistic so finding practical ways to live with periodic flooding should be sought. Measures to be introduced on a building-by-building basis should encouraged including establishment of a website with how-to information and publication of a booklet that stresses appropriate materials and sensitive design solutions for historic buildings.

iv. Property List for Waverly, Bremer County

The property list below for Waverly contains the addresses of at least 772 buildings, their dates of construction if known, the surveyor opinion of individual eligibility, the surveyor opinion of district eligibility, the SHPO review status, the SHPO opinion of eligibility, and the FEMA program designation where applicable. A few properties not specified on this list are included because they are a part of potential historic districts that extend beyond flood affected areas.

Comprehensive List of FEMA and Non-FEMA Program Properties Reviewed in Waverly, Bremer County

Iowa Inventory Number	Street Number	Street	Year Built	FEMA Program	SHPO Reviewed	SHPO DOE	Surveyor Opinion - Individually Eligible	Surveyor Opinion - District Eligible	Surveyor Opinion District Status - Contributing or Noncontributing - C/NC
-	2200	12th St NW	1968		No	-	No	No	-
-	2202	12th St NW	1978		No	-	No	No	-
-	2414	12th St NW	Vacant Lot		No	-	No	No	-
-	2520	12th St NW	1982		No	-	No	No	-
-	208	1st Ave NW	1893		No	-	No	No	C

Iowa Inventory Number	Street Number	Street	Year Built	FEMA Program	SHPO Reviewed	SHPO DOE	Surveyor Opinion - Individually Eligible	Surveyor Opinion - District Eligible	Surveyor Opinion District Status - Contributing or Noncontributing - C/NC
-	214 B	1st Ave NW	1880		No	-	No	Yes	NC
-	214	1st Ave NW	1880	404	No	-	Yes	Yes	C
-	220	1st Ave NW	1893		No	-	No	Yes	C
-	407	1st Ave NW	1880	403/404	No	-	No	Yes	C
-	408	1st Ave NW	1896		No	-	No	Yes	C
-	415	1st Ave NW	1908		No	-	No	Yes	C
-	416	1st Ave NW	1912		No	-	No	Yes	C
-	420	1st Ave NW	1925		No	-	No	Yes	C
-	522	1st Ave NW	1888	404	No	-	No	Yes	C
-	614	1st Ave NW	1915		No	-	Yes	Yes	C
-	618	1st Ave NW	1901		No	-	No	Yes	C
-	626	1st Ave NW	1904		No	-	Yes	Yes	C
	702	1st Ave NW	1902		No	-	No	Yes	C
-	709	1st Ave NW	1908		No	-	Yes	Yes	C
	710	1st Ave NW	1890		No		No	Yes	C
-	715	1st Ave NW	1948		No	-	No	Yes	C
-	109	1st Ave SW	1941		No	-	No		
-	110	1st Ave SW	1880		No	-	No		
-	208	1st Ave SW	1908		No	-	No		
-	212	1st Ave SW	1888	403/404	No	-	Yes	No	-
-	220	1st Ave SW	1899		No	-	No		
-	307	1st Ave SW	1925		No	-	No		
-	309	1st Ave SW	1932		No	-	No		
-	413	1st Ave SW	1900		No	-	No		
-	416	1st Ave SW	1893		No	-	Yes	No	-
-	422	1st Ave SW	1888		No	-	No		
-	602	1st Ave SW	1912		No	-	No		
-	606	1st Ave SW	1913		No	-	No		
-	614	1st Ave SW	1914		No	-	Yes	No	-
-	615	1st Ave SW	1926		No	-	No		
-	619	1st Ave SW	1880		No	-	No		

Iowa Inventory Number	Street Number	Street	Year Built	FEMA Program	SHPO Reviewed	SHPO DOE	Surveyor Opinion - Individually Eligible	Surveyor Opinion - District Eligible	Surveyor Opinion District Status - Contributing or Noncontributing - C/NC
-	620	1st Ave SW	1875		No	-	No		
-	700	1st Ave SW	1913		No	-	Yes	No	-
-	708	1st Ave SW	1919		No	-	No	No	-
-	709	1st Ave SW	1912		No	-	No	No	-
-	715	1st Ave SW	1946		No	-	No	No	-
-	721	1st Ave SW	1913		No	-	No	No	-
-	311	1st St NW	Not located		No	-	-	-	-
-	315	1st St NW	Not located		No	-	-	-	-
-	403	1st St NW	1888	403/404	No	-	No	Yes	C
-	413	1st St NW	1936		No	-	No	Yes	C
-	423	1st St NW	1888	403/404	No	-	No	Yes	C
-	510	1st St NW	1938		No	-	Yes	Yes	C
-	515	1st St NW	1901		No	-	Yes	Yes	C
-	516	1st St NW	1961		No	-	No	Yes	C
-	523	1st St NW	1888		No	-	No	Yes	C
-	524	1st St NW	1921		No	-	Yes	Yes	C
-	603	1st St NW	1903		No	-	No	Yes	C
-	609	1st St NW	1927		No	-	No	Yes	C
-	809	1st St NW	1900		No	-	No	No	-
-	811	1st St NW	1890		No	-	No	No	-
-	821	1st St NW	1865		No	-	No	No	-
-	302	1st St SE	1935		No	-	Yes	Yes	C
-	308	1st St SE	1956		No	-	No	Yes	C
-	309	1st St SE	1941		No	-	No	Yes	C
-	314	1st St SE	1950		No	-	No	Yes	C
-	317	1st St SE	1893		No	-	No	Yes	C
-	321	1st St SE	1900		No	-	Yes	Yes	C
-	322	1st St SE	1901		No	-	No	Yes	C
-	400	1st St SE	Ca. 1940		No	-	No	Yes	C
-	401	1st St SE	1920		No	-	No	Yes	C
-	402	1st St SE	1956		No	-	No	Yes	C

Iowa Inventory Number	Street Number	Street	Year Built	FEMA Program	SHPO Reviewed	SHPO DOE	Surveyor Opinion - Individually Eligible	Surveyor Opinion - District Eligible	Surveyor Opinion District Status - Contributing or Noncontributing - C/NC
-	409	1st St SE	1920		No	-	No	Yes	C
-	413	1st St SE	1915		No	-	Yes	Yes	C
-	414	1st St SE	1935		No	-	No	Yes	C
-	419	1st St SE	1888		No	-	No	Yes	C
-	424	1st St SE	1993		No	-	No	Yes	NC
-	425	1st St SE	1880		No	-	No	Yes	C
-	429	1st St SE	1901		No	-	No	Yes	C
-	500	1st St SE	1939	404	No	-	No	Yes	C
-	515	1st St SE	1985		No	-	No	No	-
-	909	1st St SE	1970		No	-	No	No	-
-	910	1st St SE	1966		No	-	No	No	-
-	914	1st St SE	1970		No	-	No	No	-
-	202	1st St SW	1888		No	-	No	No	-
-	208	1st St SW	1888		No	-	No	No	-
-	216	1st St SW	1900		No	-	No	No	-
-	222	1st St SW	1910		No	-	No	No	-
-	302	1st St SW	1888		No	-	No	No	-
-	322	1st St SW	1897		No	-	Yes	No	-
-	400	1st St SW	1940		No	-	No	No	-
-	402	1st St SW	1956		No	-	No	No	-
-	410	1st St SW	1935		No	-	No	No	-
-	414	1st St SW	1888		No	-	No	No	-
-	422	1st St SW	1888		No	-	No	No	-
-	424	1st St SW	Razed		No	-	No	No	-
-	428	1st St SW	Razed		No	-	No	No	-
-	500	1st St SW	Razed		No	-	No	No	-
09-00614	502	1st St SW	1880		Yes	Yes	Yes	No	-
-	510	1st St SW	1974		No	-	No	No	-
-	600	1st St SW	1971		No	-	No	No	-
-	622	1st St SW	1890		No	-	No	No	-
-	702	1st St SW	1880		No	-	No	No	-

Iowa Inventory Number	Street Number	Street	Year Built	FEMA Program	SHPO Reviewed	SHPO DOE	Surveyor Opinion - Individually Eligible	Surveyor Opinion - District Eligible	Surveyor Opinion District Status - Contributing or Noncontributing - C/NC
-	903	1st St SW	1888	404	No	-	No	No	-
-	909	1st St SW	1900		No	-	No	No	-
-	915	1st St SW	1957		No	-	No	No	-
-	921	1st St SW	1956		No	-	No	No	-
-	927	1st St SW	1956		No	-	No	No	-
-	934	1st St SW	1890	403	No	-	No	No	-
-	106	2nd Ave NE	1952		No	-	No	No	-
09-00238	111	2nd Ave NE	1935	404	Yes	No	No	No	-
09-00133	112	2nd Ave NE	1900		Yes	No	No	No	-
-	115	2nd Ave NE	1880		No	-	No	No	-
09-00540	121	2nd Ave NE	1900		Yes	No	No	No	-
-	204	2nd Ave NW	1880	404	No	-	No	Yes	C
-	212	2nd Ave NW	1919		No	-	Yes	Yes	C
-	215	2nd Ave NW	1898		No	-	No	Yes	C
-	219	2nd Ave NW	2000		No	-	No	Yes	NC
-	220	2nd Ave NW	1890		No	-	Yes	Yes	C
-	308	2nd Ave NW	1923		No	-	No	Yes	C
-	314	2nd Ave NW	1898	404	No	-	No	Yes	C
-	322	2nd Ave NW	1905		No	-	No	Yes	C
-	408	2nd Ave NW	1888	404	No	-	No	Yes	C
-	417	2nd Ave NW	1949		No	-	No	Yes	C
-	502	2nd Ave NW	1888		No	-	No	Yes	C
-	503	2nd Ave NW	1910		No	-	No	Yes	C
-	88	2nd Ave SE	1895		No	-	Yes	Yes	C
-	91	2nd Ave SE	1925		No	-	Yes	Yes	C
-	102	2nd Ave SE	1910		No	-	No	Yes	C
-	208	2nd Ave SE	1922		No	-	No	Yes	C
-	214	2nd Ave SE	1913		No	-	No	Yes	C
-	215	2nd Ave SE	1875		No	-	No	Yes	C
-	315	2nd Ave SE	Ca. 1900		No	-	No	Yes	C
-	316	2nd Ave SE	Ca. 1900		No	-	No	Yes	C

Iowa Inventory Number	Street Number	Street	Year Built	FEMA Program	SHPO Reviewed	SHPO DOE	Surveyor Opinion - Individually Eligible	Surveyor Opinion - District Eligible	Surveyor Opinion District Status - Contributing or Noncontributing - C/NC
-	322	2nd Ave SE	1911		No	-	Yes	Yes	C
-	108	2nd Ave SW	1865		No	-	No	No	-
-	109	2nd Ave SW	1888		No	-	No	No	-
-	120	2nd Ave SW	1898		No	-	No	No	-
-	121	2nd Ave SW	1873		No	-	No	No	-
-	210	2nd Ave SW	Razed		No	-	No	No	-
-	213	2nd Ave SW	1893		No	-	No	No	-
-	220	2nd Ave SW	1908		No	-	No	No	-
-	221	2nd Ave SW	1898		No	-	No	No	-
-	222	2nd Ave SW	1939		No	-	No	No	-
-	311	2nd Ave SW	1948		No	-	No	No	-
-	313	2nd Ave SW	1953		No	-	No	No	-
-	318	2nd Ave SW	1890		No	-	Yes	No	-
-	401	2nd Ave SW	1876		No	-	Yes	No	-
-	415	2nd Ave SW	1915		No	-	No	No	-
-	423	2nd Ave SW	1890		No	-	No	No	-
-	615	2nd Ave SW	1902		No	-	No	No	-
-	616	2nd Ave SW	1888		No	-	No	No	-
-	620	2nd Ave SW	1910		No	-	No	No	-
-	621	2nd Ave SW	1900		No	-	No	No	-
-	709	2nd Ave SW	1898		No	-	No	No	-
-	716	2nd Ave SW	1938		No	-	No	No	-
-	717	2nd Ave SW	1913		No	-	Yes	No	-
-	720	2nd Ave SW	1888		No	-	No	No	-
-	802	2nd Ave SW	1888		No	-	No	No	-
-	808	2nd Ave SW	1938		No	-	No	No	-
-	223	2nd St No	1898		No	-	No	No	-
-	116	2nd St NW	1920		No	-	Yes	Yes	C
-	203	2nd St NW	1893		No	-	No	Yes	C
-	217	2nd St NW	1900		No	-	No	Yes	C
-	223	2nd St NW	Razed		No	-	No	Yes	NC

Iowa Inventory Number	Street Number	Street	Year Built	FEMA Program	SHPO Reviewed	SHPO DOE	Surveyor Opinion - Individually Eligible	Surveyor Opinion - District Eligible	Surveyor Opinion District Status - Contributing or Noncontributing - C/NC
-	309	2nd St NW	1932		No	-	No	Yes	C
-	315	2nd St NW	1893		No	-	No	Yes	C
-	321	2nd St NW	1935		No	-	Yes	Yes	C
-	322	2nd St NW	1920		No	-	No	Yes	C
-	409	2nd St NW	1955		No	-	No	Yes	C
-	415	2nd St NW	1899		No	-	No	Yes	C
-	416	2nd St NW	1900		No	-	No	Yes	C
-	422	2nd St NW	1961		No	-	No	Yes	C
-	423	2nd St NW	1950		No	-	No	Yes	C
-	502	2nd St NW	1898		No	-	Yes	Yes	C
-	503	2nd St NW	1900		No	-	Yes	Yes	C
-	507	2nd St NW	1916		No	-	Yes	Yes	C
-	510	2nd St NW	1927		No	-	No	Yes	C
-	515	2nd St NW	1900		No	-	Yes	Yes	C
-	516	2nd St NW	1920		No	-	No	Yes	C
-	518	2nd St NW	1940		No	-	No	Yes	C
-	519	2nd St NW	1897		No	-	Yes	Yes	C
-	522	2nd St NW	1893		No	-	No	Yes	C
-	523	2nd St NW	1905		No	-	No	Yes	C
-	603	2nd St NW	1880		No	-	No	No	-
-	609	2nd St NW	1905		No	-	No	No	-
-	610	2nd St NW	1890		No	-	No	No	-
-	615	2nd St NW	1888		No	-	No	No	-
-	616	2nd St NW	1898		No	-	No	No	-
-	619	2nd St NW	1900		No	-	No	No	-
-	623	2nd St NW	1908		No	-	No	No	-
-	624	2nd St NW	1928		No	-	No	No	-
-	215	2nd St SE	1960		No	-	No	Yes	C
-	221	2nd St SE	1925		No	-	No	Yes	C
-	315	2nd St SE	1950		No	-	No	Yes	C
-	316	2nd St SE	1900		No	-	No	Yes	C

Iowa Inventory Number	Street Number	Street	Year Built	FEMA Program	SHPO Reviewed	SHPO DOE	Surveyor Opinion - Individually Eligible	Surveyor Opinion - District Eligible	Surveyor Opinion District Status - Contributing or Noncontributing - C/NC
-	317	2nd St SE	1904		No	-	No	Yes	C
-	319	2nd St SE	1900		No	-	No	Yes	C
-	320	2nd St SE	1931		No	-	No	Yes	C
-	403	2nd St SE	1898		No	-	Yes	Yes	C
-	404	2nd St SE	1910		No	-	No	Yes	C
-	410	2nd St SE	1938		No	-	Yes	Yes	C
-	411	2nd St SE	1920		No	-	No	Yes	C
-	416	2nd St SE	1925		No	-	Yes	Yes	C
-	417	2nd St SE	1920		No	-	Yes	Yes	C
-	422	2nd St SE	1935		No	-	Yes	Yes	C
-	423	2nd St SE	1880		No	-	No	Yes	C
-	427	2nd St SE	1920		No	-	No	Yes	NC
-	428	2nd St SE	1880		No	-	No	Yes	C
-	502	2nd St SE	1898		No	-	No	Yes	C
-	508	2nd St SE	1954		No	-	No	Yes	C
-	516	2nd St SE	1925		No	-	No	Yes	C
-	517	2nd St SE	1925	404	No	-	Yes	Yes	C
-	702	2nd St SE	1951		No	-	No	No	-
-	717	2nd St SE	1951		No	-	No	No	-
-	720	2nd St SE	1947		No	-	No	No	-
-	116	2nd St SW	Not located		No	-	No	No	-
-	122	2nd St SW	1956		No	-	Yes	No	-
-	203	2nd St SW	1913		No	-	No	No	-
-	211	2nd St SW	1885		No	-	No	No	-
-	215	2nd St SW	1898		No	-	Yes	No	-
-	217	2nd St SW	1925		No	-	No	No	-
-	220	2nd St SW	1908		No	-	Yes	No	-
-	302	2nd St SW	1921		No	-	No	No	-
-	308	2nd St SW	1900		No	-	Yes	No	-
-	309	2nd St SW	1906		No	-	No	No	-
-	317	2 nd ST SW	1925		No	-	No	No	-

Iowa Inventory Number	Street Number	Street	Year Built	FEMA Program	SHPO Reviewed	SHPO DOE	Surveyor Opinion - Individually Eligible	Surveyor Opinion - District Eligible	Surveyor Opinion District Status - Contributing or Noncontributing - C/NC
-	320	2nd St SW	1920		No	-	No	No	-
-	323	2nd St SW	1925		No	-	No	No	-
-	404	2nd St SW	1913		No	-	No	No	-
-	407	2nd St SW	1888		No	-	No	No	-
-	410	2nd St SW	1900		No	-	No	No	-
-	411	2nd St SW	1915		No	-	No	No	-
-	414	2nd St SW	1940		No	-	No	No	-
-	415	2nd St SW	1932		No	-	Yes	No	-
-	421	2nd St SW	1900	404	No	-	No	No	-
-	500	2nd St SW	1875		No	-	No	No	-
-	507	2nd St SW	1880		No	-	No	No	-
-	508	2nd St SW	1915		No	-	Yes	No	-
-	516	2nd St SW	1910	404	No	-	No	No	-
-	517	2nd St SW	1964		No	-	No	No	-
-	520	2nd St SW	1893		No	-	No	No	-
-	523	2nd St SW	1880		No	-	No	No	-
-	602	2nd St SW	1940		No	-	No	No	-
-	710	2nd St SW	1888	403/404	No	-	No	No	-
-	717	2nd St SW	1977		No	-	No	No	-
-	803	2nd St SW	1880	404	No	-	No	No	-
-	811	2nd St SW	1893		No	-	No	No	-
-	124	3rd Ave NW	Not located		No	-	-	-	-
-	202	3rd Ave NW	1865		No	-	No	Yes	C
-	204	3rd Ave NW	1919		No	-	No	Yes	C
-	214	3rd Ave NW	1905		No	-	No	Yes	C
-	218	3rd Ave NW	1930		No	-	No	Yes	C
-	306	3rd Ave NW	1903	404	No	-	No	Yes	C
-	314	3rd Ave NW	1912		No	-	No	Yes	C
-	315	3rd Ave NW	1930		No	-	No	Yes	C
-	322	3rd Ave NW	1913		No	-	No	Yes	C
-	420	3rd Ave NW	1916		No	-	Yes	Yes	C

Iowa Inventory Number	Street Number	Street	Year Built	FEMA Program	SHPO Reviewed	SHPO DOE	Surveyor Opinion - Individually Eligible	Surveyor Opinion - District Eligible	Surveyor Opinion District Status - Contributing or Noncontributing - C/NC
-	504	3rd Ave NW	1896		No	-	No	Yes	C
-	522	3rd Ave NW	1898	404	No	-	No	Yes	C
-	602	3rd Ave NW	1898		No	-	No	Yes	C
-	608	3rd Ave NW	1908		No	-	No	Yes	C
-	616	3rd Ave NW	1890		No	-	No	Yes	C
-	110	3rd Ave SE	1959		No	-	No	Yes	NC
-	115	3rd Ave SE	1951		No	-	No	Yes	C
-	315	3rd Ave SE	1904		No	-	No	Yes	C
-	317	3rd Ave SE	1910		No	-	No	Yes	C
-	403	3rd Ave SE	1888		No	-	No	Yes	C
-	103	3rd Ave SW	1974		No	-	No	No	-
-	108	3rd Ave SW	1939		No	-	No	No	-
-	209	3rd Ave SW	1930		No	-	No	No	-
-	210	3rd Ave SW	1938		No	-	No	No	-
-	215	3rd Ave SW	1900		No	-	No	No	-
-	216	3rd Ave SW	1890		No	-	No	No	-
-	220	3rd Ave SW	1908		No	-	No	No	-
-	310	3rd Ave SW	1875	404	No	-	No	No	-
-	320	3rd Ave SW	1965		No	-	No	No	-
-	418	3rd Ave SW	1915		No	-	Yes	No	-
-	419	3rd Ave SW	1919		No	-	Yes	No	-
-	422	3rd Ave SW	1917		No	-	No	No	-
-	508	3rd Ave SW	1966		No	-	No	No	-
-	509	3rd Ave SW	1890		No	-	No	No	-
-	514	3rd Ave SW	1910		No	-	No	No	-
-	515	3rd Ave SW	1890		No	-	No	No	-
-	520	3rd Ave SW	1910		No	-	No	No	-
-	521	3rd Ave SW	1890	404	No	-	No	No	-
-	606	3rd Ave SW	1902		No	-	Yes	No	-
-	609	3rd Ave SW	1964		No	-	No	No	-
-	614	3rd Ave SW	1980		No	-	No	No	-

Iowa Inventory Number	Street Number	Street	Year Built	FEMA Program	SHPO Reviewed	SHPO DOE	Surveyor Opinion - Individually Eligible	Surveyor Opinion - District Eligible	Surveyor Opinion District Status - Contributing or Noncontributing - C/NC
-	615	3rd Ave SW	1890		No	-	No	No	-
-	621	3rd Ave SW	1920		No	-	No	No	-
-	701	3rd Ave SW	1898		No	-	No	No	-
-	708	3rd Ave SW	1992		No	-	No	No	-
-	713	3rd Ave SW	1950		No	-	No	No	-
-	717	3rd Ave SW	1982		No	-	No	No	-
-	721	3rd Ave SW	1984		No	-	No	No	-
-	216	3rd St NW	1890		No	-	No	Yes	C
-	303	3rd St NW	1897		No	-	Yes	Yes	C
-	316	3rd St NW	1920		No	-	Yes	Yes	C
-	317	3rd St NW	1935		No	-	No	Yes	C
-	320	3rd St NW	1925		No	-	No	Yes	C
-	321	3rd St NW	1893		No	-	No	Yes	C
-	403	3rd St NW	1903	404	No	-	No	Yes	C
-	408	3rd St NW	1920		No	-	Yes	Yes	C
-	420	3rd St NW	1890		No	-	No	Yes	C
-	421	3rd St NW	1925		No	-	No	Yes	C
-	509	3rd St NW	1950		No	-	No	Yes	C
-	510	3rd St NW	1890		No	-	No	Yes	C
-	518	3rd St NW	1930		No	-	Yes	Yes	C
-	520	3rd St NW	1920		No	-	Yes	Yes	C
-	523	3rd St NW	1958		No	-	Yes	Yes	C
-	615	3rd St NW	1925		No	-	No	Yes	C
-	616	3rd St NW	1928		No	-	No	Yes	C
-	617	3rd St NW	1935		No	-	Yes	Yes	C
-	618	3rd St NW	1924		No	-	No	Yes	C
-	623	3rd St NW	1905		No	-	Yes	Yes	C
-	722	3rd St NW	1951		No	-	No	No	-
-	723	3rd St NW	1900		No	-	No	No	-
-	801	3rd St NW	1950		No	-	No	No	-
-	225	3rd St SE	1890		No	-	No	Yes	C

Iowa Inventory Number	Street Number	Street	Year Built	FEMA Program	SHPO Reviewed	SHPO DOE	Surveyor Opinion - Individually Eligible	Surveyor Opinion - District Eligible	Surveyor Opinion District Status - Contributing or Noncontributing - C/NC
-	305	3rd St SE	1933		No	-	No	Yes	C
-	308	3rd St SE	Ca. 1900		No	-	No	Yes	C
-	310	3rd St SE	1908		No	-	No	Yes	C
-	317	3rd St SE	1904		No	-	No	Yes	C
-	322	3rd St SE	1890		No	-	Yes	Yes	C
-	323	3rd St SE	1925		No	-	Yes	Yes	C
-	402	3rd St SE	1924		No	-	Yes	Yes	C
-	406	3rd St SE	1893		No	-	No	Yes	C
-	407	3rd St SE	1910		No	-	Yes	Yes	C
-	416	3rd St SE	1888		No	-	No	Yes	C
-	419	3rd St SE	1894		No	-	No	Yes	NC
-	420	3rd St SE	1920		No	-	No	Yes	C
-	422	3rd St SE	1940		No	-	No	Yes	C
-	423	3rd St SE	1900		No	-	No	Yes	C
-	426	3rd St SE	1900		No	-	No	Yes	C
-	427	3rd St SE	1958		No	-	No	Yes	C
-	503	3rd St SE	1948		No	-	No	Yes	C
-	507	3rd St SE	1948		No	-	No	Yes	C
-	509	3rd St SE	1900		No	-	No	Yes	C
-	514	3rd St SE	1920	404	No	-	No	Yes	C
-	517	3rd St SE	1957		No	-	No	Yes	C
-	600	3rd St SE	1956		No	-	No	No	C
-	601	3rd St SE	1950	404	No	-	No	No	C
-	702	3rd St SE	1948		No	-	No	No	C
-	709	3rd St SE	1957		No	-	No	No	C
-	715	3rd St SE	1957		No	-	No	No	C
-	716	3rd St SE	1922		No	-	Yes	No	C
-	720	3rd St SE	1938		No	-	No	No	C
-	722	3rd St SE	1938		No	-	No	No	C
-	805	3rd St SE	1991		No	-	No	No	C
-	1003	3rd St SE	1957		No	-	No	No	-

Iowa Inventory Number	Street Number	Street	Year Built	FEMA Program	SHPO Reviewed	SHPO DOE	Surveyor Opinion - Individually Eligible	Surveyor Opinion - District Eligible	Surveyor Opinion District Status - Contributing or Noncontributing - C/NC
-	1004	3rd St SE	1963		No	-	No	No	-
-	1007	3rd St SE	1956		No	-	No	No	-
-	1011	3rd St SE	1957		No	-	No	No	-
-	1012	3rd St SE	1969		No	-	No	No	-
-	1015	3rd St SE	1956		No	-	No	No	-
-	1016	3rd St SE	1961		No	-	No	No	-
-	1019	3rd St SE	1955		No	-	No	No	-
-	1023	3rd St SE	1958		No	-	No	No	-
-	1027	3rd St SE	1955		No	-	No	No	-
-	1103	3rd St SE	1955		No	-	No	No	-
-	1111	3rd St SE	2001		No	-	No	No	-
-	110	3rd St SW	1885		No	-	No	No	-
-	115	3rd St SW	1865		No	-	Yes	No	-
-	120	3rd St SW	1888	404	No	-	No	No	-
-	200	3rd St SW	1941		No	-	No	No	-
-	208	3rd St SW	1925		No	-	Yes	No	-
-	211	3rd St SW	2001		No	-	No	No	-
-	215	3rd St SW	1916		No	-	Yes	No	-
-	216	3rd St SW	1925		No	-	No	No	-
-	222	3rd St SW	1888		No	-	No	No	-
-	310	3rd St SW	1910		No	-	Yes	No	-
-	315	3rd St SW	1926		No	-	Yes	No	-
-	318	3rd St SW	1919		No	-	No	No	-
-	403	3rd St SW	1893		No	-	No	No	-
-	417	3rd St SW	1888		No	-	No	No	-
-	502	3rd St SW	1971		No	-	No	No	-
-	509	3rd St SW	1890	404	No	-	No	No	-
-	515	3rd St SW	1940		No	-	No	No	-
-	516	3rd St SW	1888		No	-	No	No	-
-	602	3rd St SW	1895		No	-	No	No	-
-	603	3rd St SW	1935		No	-	No	No	-

Iowa Inventory Number	Street Number	Street	Year Built	FEMA Program	SHPO Reviewed	SHPO DOE	Surveyor Opinion - Individually Eligible	Surveyor Opinion - District Eligible	Surveyor Opinion District Status - Contributing or Noncontributing - C/NC
-	611	3rd St SW	1935		No	-	No	No	-
-	614	3rd St SW	1910		No	-	Yes	No	-
-	621	3rd St SW	1936		No	-	No	No	-
-	622	3rd St SW	1898		No	-	No	No	-
-	625	3rd St SW	1925		No	-	No	No	-
-	703	3rd St SW	1917		No	-	No	No	-
-	708	3rd St SW	1890		No	-	No	No	-
-	709	3rd St SW	1938		No	-	No	No	-
-	714	3rd St SW	1920		No	-	No	No	-
-	725	3rd St SW	1888		No	-	No	No	-
-	92	4th Ave NW	1955		No	-	Yes	Yes	C
-	96	4th Ave NW	1870		No	-	No	Yes	C
-	104	4th Ave NW	1890		No	-	No	Yes	NC
-	106	4th Ave NW	1922		No	-	No	Yes	C
-	109	4th Ave NW	1925		No	-	No	Yes	C
-	115	4th Ave NW	1900		No	-	No	Yes	C
-	205	4th Ave NW	1938		No	-	No	Yes	C
-	216	4th Ave NW	1896		No	-	Yes	Yes	C
-	220	4th Ave NW	1921		No	-	Yes	Yes	C
-	302	4th Ave NW	1915		No	-	No	Yes	C
-	307	4th Ave NW	1930		No	-	No	Yes	C
-	309	4th Ave NW	1900		No	-	No	Yes	NC
-	311	4th Ave NW	Ca. 2008		No	-	No	Yes	NC
-	312	4th Ave NW	1925		No	-	No	Yes	C
-	322	4th Ave NW	1888		No	-	No	Yes	C
-	402	4th Ave NW	1925		No	-	No	Yes	C
-	406	4th Ave NW	1893		No	-	No	Yes	C
-	415	4th Ave NW	1948		No	-	No	Yes	C
-	416	4th Ave NW	1893		No	-	No	Yes	C
-	420	4th Ave NW	1880		No	-	No	Yes	C
-	502	4th Ave NW	1888		No	-	No	Yes	C

Iowa Inventory Number	Street Number	Street	Year Built	FEMA Program	SHPO Reviewed	SHPO DOE	Surveyor Opinion - Individually Eligible	Surveyor Opinion - District Eligible	Surveyor Opinion District Status - Contributing or Noncontributing - C/NC
-	510	4th Ave NW	1898		No	-	No	Yes	C
-	520	4th Ave NW	1896	404	No	-	No	Yes	C
-	521	4th Ave NW	1977		No	-	No	Yes	NC
-	602	4th Ave NW	1890		No	-	No	Yes	C
-	608	4th Ave NW	1911		No	-	Yes	Yes	C
-	620	4th Ave NW	1940		No	-	No	Yes	C
-	621	4th Ave NW	1908		No	-	No	Yes	C
-	102	4th Ave SE	1893		No	-	No	Yes	C
-	108	4th Ave SE	1906		No	-	Yes	Yes	C
-	208	4th Ave SE	1896	404	No	-	Yes	Yes	C
-	209	4th Ave SE	1925		No	-	No	Yes	C
-	212	4th Ave SE	1888	404	No	-	No	Yes	C
-	215	4th Ave SE	1948		No	-	No	Yes	C
-	222	4th Ave SE	1901		No	-	Yes	Yes	C
-	109	4th Ave SW	1925		No	-	No	No	-
-	202	4th Ave SW	1890		No	-	No	No	-
-	208	4th Ave SW	1946		No	-	No	No	-
-	309	4th Ave SW	1948		No	-	No	No	-
-	315	4th Ave SW	1972		No	-	No	No	-
-	415	4th Ave SW	1910		No	-	No	No	-
-	420	4th Ave SW	1949		No	-	No	No	-
-	421	4th Ave SW	1941		No	-	No	No	-
-	509	4th Ave SW	1935		No	-	No	No	-
-	510	4th Ave SW	1935		No	-	No	No	-
-	520	4th Ave SW	1955		No	-	No	No	-
-	521	4th Ave SW	1898		No	-	No	No	-
-	609	4th Ave SW	1900		No	-	No	No	-
-	615	4th Ave SW	1900		No	-	No	No	-
-	620	4th Ave SW	1890		No	-	No	No	-
-	621	4th Ave SW	1913		No	-	No	No	-
-	702	4th Ave SW	1951		No	-	No	No	-

Iowa Inventory Number	Street Number	Street	Year Built	FEMA Program	SHPO Reviewed	SHPO DOE	Surveyor Opinion - Individually Eligible	Surveyor Opinion - District Eligible	Surveyor Opinion District Status - Contributing or Noncontributing - C/NC
-	710	4th Ave SW	1951		No	-	No	No	-
-	5115	4th Ave SW	1900		No	-	No	No	-
-	115	4th St NW	1939		No	-	No	No	-
-	121	4th St NW	1939		No	-	No	No	-
-	127	4th St NW	1939		No	-	No	No	-
-	203	4th St NW	1900		No	-	No	Yes	C
-	211	4th St NW	1908		No	-	No	Yes	C
-	217	4th St NW	1905		No	-	No	Yes	C
-	219	4th St NW	1927		No	-	No	Yes	C
-	303	4th St NW	1893	404	No	-	No	Yes	C
-	317	4th St NW	1916	404	No	-	No	Yes	C
-	320	4th St NW	1995	404	No	-	No	Yes	NC
-	323	4th St NW	1888		No	-	No	Yes	C
-	403	4th St NW	1920		No	-	Yes	Yes	C
-	411	4th St NW	1913		No	-	No	Yes	C
-	414	4th St NW	1898		No	-	No	Yes	C
-	417	4th St NW	1902		No	-	Yes	Yes	C
-	421	4th St NW	1917		No	-	Yes	Yes	C
-	424	4th St NW	Ca. 2008		No	-	No	Yes	NC
-	508	4th St NW	1935		No	-	Yes	Yes	C
-	521	4th St NW	1934		No	-	Yes	Yes	C
-	522	4th St NW	1888		No	-	No	Yes	C
-	523	4th St NW	1908		No	-	Yes	Yes	C
-	601	4th St NW	1974		No	-	No	Yes	NC
-	610	4th St NW	1912		No	-	No	Yes	C
-	611	4th St NW	1934		No	-	No	Yes	C
-	616	4th St NW	1900		No	-	Yes	Yes	C
-	617	4th St NW	1893		No	-	No	Yes	C
-	619	4th St NW	1898		No	-	No	Yes	C
-	703	4th St NW	1890		No	-	No	No	-
-	805	4th St NW	1955		No	-	No	No	-

Iowa Inventory Number	Street Number	Street	Year Built	FEMA Program	SHPO Reviewed	SHPO DOE	Surveyor Opinion - Individually Eligible	Surveyor Opinion - District Eligible	Surveyor Opinion District Status - Contributing or Noncontributing - C/NC
-	809	4th St NW	1951		No	-	No	No	-
-	505	4th St SE	1982		No	-	No	No	-
-	703	4th St SE	1956		No	-	No	No	-
-	708	4th St SE	1955	404	No	-	No	No	-
-	709	4th St SE	1955		No	-	No	No	-
-	714	4th St SE	1956		No	-	No	No	-
-	715	4th St SE	1955		No	-	No	No	-
-	720	4th St SE	1955		No	-	No	No	-
-	721	4th St SE	1955		No	-	No	No	-
-	727	4th St SE	1956		No	-	No	No	-
-	806	4th St SE	1991	404	No	-	No	No	-
-	201	4th St SW	1928		No	-	Yes	No	-
-	204	4th St SW	1888		No	-	Yes	No	-
-	208	4th St SW	1880	404	No	-	No	No	-
-	209	4th St SW	1898		No	-	No	No	-
-	214	4th St SW	1892	404	No	-	Yes	No	-
-	215	4th St SW	1930		No	-	No	No	-
-	315	4th St SW	1900		No	-	No	No	-
-	316	4th St SW	1923		No	-	No	No	-
-	320	4th St SW	1875		No	-	No	No	-
-	401	4th St SW	1996		No	-	No	No	-
-	410	4th St SW	1900		No	-	No	No	-
-	416	4th St SW	1880		No	-	No	No	-
-	422	4th St SW	1890		No	-	No	No	-
-	502	4th St SW	1900		No	-	Yes	No	-
-	505	4th St SW	1890		No	-	No	No	-
-	510	4th St SW	1890		No	-	No	No	-
-	522	4th St SW	1890		No	-	No	No	-
-	623	4th St SW	1900		No	-	No	No	-
-	703	4th St SW	1953		No	-	No	No	-
-	709	4th St SW	1945		No	-	No	No	-

Iowa Inventory Number	Street Number	Street	Year Built	FEMA Program	SHPO Reviewed	SHPO DOE	Surveyor Opinion - Individually Eligible	Surveyor Opinion - District Eligible	Surveyor Opinion District Status - Contributing or Noncontributing - C/NC
-	717	4th St SW	1939		No	-	No	No	-
-	87	5th Ave NW	1888		No	-	No	Yes	C
-	108	5th Ave NW	1900		No	-	No	Yes	C
-	114	5th Ave NW	1955		No	-	No	Yes	C
-	120	5th Ave NW	1896		No	-	No	Yes	C
-	209	5th Ave NW	1928		No	-	No	Yes	C
-	210	5th Ave NW	1932		No	-	No	Yes	C
-	222	5th Ave NW	1900		No	-	No	Yes	C
-	308	5th Ave NW	1949		No	-	No	Yes	C
-	311	5th Ave NW	1896		No	-	No	Yes	C
-	312	5th Ave NW	1928		No	-	No	Yes	C
-	316	5th Ave NW	2002		No	-	No	Yes	NC
-	420	5th Ave NW	1896		No	-	No	Yes	C
-	450	5th Ave NW	1896		No	-	No	Yes	C
-	502	5th Ave NW	1895		No	-	No	Yes	C
-	508	5th Ave NW	1925		No	-	No	Yes	C
-	509	5th Ave NW	1935		No	-	No	Yes	C
-	510	5th Ave NW	1967	404	No	-	No	Yes	NC
-	602	5th Ave NW	1920		No	-	No	Yes	C
-	608	5th Ave NW	1890		No	-	No	Yes	C
-	609	5th Ave NW	1948		No	-	No	Yes	C
-	614	5th Ave NW	1922		No	-	Yes	Yes	C
-	615	5th Ave NW	1948		No	-	No	Yes	C
-	617	5th Ave NW	1949		No	-	No	Yes	C
-	620	5th Ave NW	1908		No	-	No	Yes	C
-	702	5th Ave NW	1937		No	-	No	Yes	NC
-	108	5th Ave SW	1880		No	-	No	No	-
-	109	5th Ave SW	1948		No	-	No	No	-
-	113	5th Ave SW	1890	404	No	-	No	No	-
-	121	5th Ave SW	1880	404	No	-	No	No	-
-	302	5th Ave SW	1951		No	-	Yes	No	-

Iowa Inventory Number	Street Number	Street	Year Built	FEMA Program	SHPO Reviewed	SHPO DOE	Surveyor Opinion - Individually Eligible	Surveyor Opinion - District Eligible	Surveyor Opinion District Status - Contributing or Noncontributing - C/NC
-	309	5th Ave SW	1938		No	-	No	No	-
-	310	5th Ave SW	1888		No	-	No	No	-
-	312	5th Ave SW	1890		No	-	No	No	-
-	315	5th Ave SW	1919		No	-	No	No	-
-	320	5th Ave SW	1890		No	-	No	No	-
-	321	5th Ave SW	1929		No	-	No	No	-
-	400	5th Ave SW	1900		No	-	No	No	-
-	412	5th Ave SW	1977		No	-	No	No	-
-	420	5th Ave SW	1910		No	-	Yes	No	-
-	514	5th Ave SW	1894		No	-	Yes	No	-
-	520	5th Ave SW	1905		No	-	No	No	-
-	602	5th Ave SW	1920		No	-	No	No	-
-	608	5th Ave SW	1946		No	-	No	No	-
-	610	5th Ave SW	1946		No	-	No	No	-
-	1801	5th St	1900		No	-	No	No	-
-	112	5th St NW	1930		No	-	No	No	-
-	116	5th St NW	1900		No	-	No	No	-
-	117	5th St NW	1888	404	No	-	No	No	-
-	122	5th St NW	1912		No	-	No	No	-
-	123	5th St NW	1903		No	-	No	No	-
-	203	5th St NW	1908		No	-	Yes	Yes	C
-	213	5th St NW	1910		No	-	Yes	Yes	C
-	217	5th St NW	1896		No	-	Yes	Yes	C
-	220	5th St NW	1898		No	-	No	Yes	C
-	223	5th St NW	1880		No	-	Yes	Yes	C
-	302	5th St NW	1888		No	-	No	Yes	C
-	309	5th St NW	1893		No	-	No	Yes	C
-	310	5th St NW	1935		No	-	No	Yes	C
-	315	5th St NW	1898		No	-	No	Yes	C
-	316	5th St NW	1898		No	-	No	Yes	C
-	322	5th St NW	1917		No	-	No	Yes	C

Iowa Inventory Number	Street Number	Street	Year Built	FEMA Program	SHPO Reviewed	SHPO DOE	Surveyor Opinion - Individually Eligible	Surveyor Opinion - District Eligible	Surveyor Opinion District Status - Contributing or Noncontributing - C/NC
-	323	5th St NW	1910		No	-	Yes	Yes	C
-	415	5th St NW	1908		No	-	No	Yes	C
-	419	5th St NW	1959		No	-	No	Yes	C
-	422	5th St NW	1914		No	-	Yes	Yes	C
-	423	5th St NW	1898		No	-	No	Yes	C
-	516	5th St NW	1900		No	-	No	Yes	C
-	519	5th St NW	1908		No	-	Yes	Yes	C
-	523	5th St NW	1893		No	-	No	Yes	C
-	524	5th St NW	1898		No	-	No	Yes	C
-	612	5th St NW	1913		No	-	No	Yes	C
-	616	5th St NW	1898		No	-	No	Yes	C
-	624	5th St NW	1908		No	-	No	Yes	C
-	1209	5th St NW	1991		No	-	No	No	-
-	111	5th St SW	1912		No	-	No	No	-
-	116	5th St SW	1880	404	No	-	No	No	-
-	122	5th St SW	1880	404	No	-	No	No	-
-	302	5th St SW	1890		No	-	No	No	-
-	309	5th St SW	1915		No	-	No	No	-
-	310	5th St SW	1920		No	-	Yes	No	-
-	322	5th St SW	1900		No	-	No	No	-
-	401	5th St SW	1900	404	No	-	No	No	-
-	404	5th St SW	1890	404	No	-	No	No	-
-	410	5th St SW	1939		No	-	No	No	-
-	419	5th St SW	1990		No	-	No	No	-
-	422	5th St SW	1900		No	-	No	No	-
-	502	5th St SW	1915		No	-	No	No	-
-	514	5th St SW	1910		No	-	No	No	-
-	522	5th St SW	1905		No	-	No	No	-
-	117	6th Ave NW	1928		No	-	No	No	-
-	214	6th Ave NW	1865		No	-	No	No	-
-	220	6th Ave NW	1890		No	-	No	No	-

Iowa Inventory Number	Street Number	Street	Year Built	FEMA Program	SHPO Reviewed	SHPO DOE	Surveyor Opinion - Individually Eligible	Surveyor Opinion - District Eligible	Surveyor Opinion District Status - Contributing or Noncontributing - C/NC
-	314	6th Ave NW	1955		No	-	No	No	-
-	319	6th Ave NW	1908		No	-	No	No	-
-	320	6th Ave NW	1900		No	-	No	No	-
-	325	6th Ave NW	1890		No	-	No	No	-
-	408	6th Ave NW	1933		No	-	No	No	-
-	412	6th Ave NW	1890		No	-	No	No	-
-	420	6th Ave NW	1946		No	-	No	No	-
-	608	6th Ave NW	1900		No	-	No	No	-
-	614	6th Ave NW	1950		No	-	No	No	-
-	616	6th Ave NW	1950		No	-	No	No	-
-	200	6th Ave SE	1939		No	-	Yes	No	-
-	205	6th Ave SE	1951		No	-	No	No	-
-	309	6th Ave SE	1957		No	-	No	No	-
-	310	6th Ave SE	1955		No	-	No	No	-
-	315	6th Ave SE	1955		No	-	No	No	-
-	316	6th Ave SE	1955		No	-	No	No	-
-	320	6th Ave SE	1955		No	-	No	No	-
-	715	6th Ave SE	Not located		No	-	-	-	-
-	108	6th Ave SW	1888		No	-	No	No	-
-	114	6th Ave SW	1888	404	No	-	No	No	-
-	115	6th Ave SW	1900	404	No	-	No	No	-
-	120	6th Ave SW	1890	403/404	No	-	No	No	-
-	203	6th Ave SW	1968		No	-	No	No	-
-	210	6th Ave SW	1888		No	-	No	No	-
-	301	6th Ave SW	1989		No	-	No	No	-
-	308	6th Ave SW	1875		No	-	Yes	No	-
-	312	6th Ave SW	1898		No	-	No	No	-
-	111	6th St NW	1893		No	-	No	Yes	C
-	117	6th St NW	1971	404	No	-	No	Yes	NC
-	121	6th St NW	1905		No	-	Yes	Yes	C
-	203	6th St NW	1890		No	-	Yes	Yes	C

Iowa Inventory Number	Street Number	Street	Year Built	FEMA Program	SHPO Reviewed	SHPO DOE	Surveyor Opinion - Individually Eligible	Surveyor Opinion - District Eligible	Surveyor Opinion District Status - Contributing or Noncontributing - C/NC
-	210	6th St NW	1947		No	-	No	Yes	C
-	215	6th St NW	1941		No	-	Yes	Yes	C
-	216	6th St NW	1888	403/404	No	-	No	Yes	C
-	221	6th St NW	1894		No	-	No	Yes	C
-	224	6th St NW	1888	404	No	-	No	Yes	C
-	303	6th St NW	1894		No	-	No	Yes	C
-	304	6th St NW	1900		No	-	No	Yes	C
-	316	6th St NW	1898		No	-	No	Yes	NC
-	317	6th St NW	1926		No	-	No	Yes	C
-	323	6th St NW	1896		No	-	No	Yes	C
-	408	6th St NW	1898	404	No	-	No	Yes	C
-	414	6th St NW	1890	404	No	-	No	No	-
-	415	6th St NW	1898		No	-	No	No	-
-	508	6th St NW	1952		No	-	No	No	-
-	523	6th St NW	1898	404	No	-	No	No	-
-	524	6th St NW	1964	404	No	-	No	No	-
-	614	6th St NW	1965	403	No	-	No	No	-
-	108	6th St SW	1890		No	-	No	No	-
-	200	6th St SW	1880		No	-	No	No	-
-	210	6th St SW	1900		No	-	No	No	-
-	214	6th St SW	1912		No	-	No	No	-
-	220	6th St SW	1880		No	-	No	No	-
-	302	6th St SW	1875		No	-	No	No	-
-	303	6th St SW	1978		No	-	No	No	-
-	309	6th St SW	1914		No	-	No	No	-
-	310	6th St SW	1875		No	-	No	No	-
-	322	6th St SW	1875		No	-	No	No	-
-	404	6th St SW	1898		No	-	No	No	-
-	418	6th St SW	1893		No	-	No	No	-
-	419	6th St SW	1890		No	-	No	No	-
-	422	6th St SW	1899		No	-	No	No	-

Iowa Inventory Number	Street Number	Street	Year Built	FEMA Program	SHPO Reviewed	SHPO DOE	Surveyor Opinion - Individually Eligible	Surveyor Opinion - District Eligible	Surveyor Opinion District Status - Contributing or Noncontributing - C/NC
-	502	6th St SW	1900		No	-	No	No	-
-	214	7th Ave NW	1937		No	-	No	No	-
-	215	7th Ave NW	1865		No	-	No	No	-
-	319	7th Ave NW	1910		No	-	No	No	-
-	324	7th Ave NW	1951		No	-	No	No	-
-	802	7th Ave NW	2005		No	-	No	No	-
-	804	7th Ave NW	1977		No	-	No	No	-
-	806	7th Ave NW	1979		No	-	No	No	-
-	807	7th Ave NW	1984		No	-	No	No	-
-	812	7th Ave NW	1979		No	-	No	No	-
-	100	7th Ave SE	1955	404	No	-	No	No	-
-	106	7th Ave SE	1955		No	-	No	No	-
-	108	7th Ave SE	1954		No	-	No	No	-
-	112	7th Ave SE	1952		No	-	No	No	-
-	115	7th Ave SE	1948		No	-	No	No	-
-	116	7th Ave SE	1950		No	-	No	No	-
-	120	7th Ave SE	1951		No	-	No	No	-
-	121	7th Ave SE	1941		No	-	No	No	-
-	122	7th Ave SE	1950		No	-	No	No	-
-	123	7th Ave SE	1940		No	-	No	No	-
-	200	7th Ave SE	1951		No	-	No	No	-
-	201	7th Ave SE	1916		No	-	No	No	-
-	205	7th Ave SE	1925		No	-	Yes	No	-
-	208	7th Ave SE	1951		No	-	No	No	-
-	209	7th Ave SE	1939		No	-	No	No	-
-	216	7th Ave SE	1954		No	-	No	No	-
-	217	7th Ave SE	1910		No	-	No	No	-
-	220	7th Ave SE	1954	404	No	-	No	No	-
-	303	7th Ave SE	1908		No	-	No	No	-
-	304	7th Ave SE	1993		No	-	No	No	-
-	306	7th Ave SE	1998		No	-	No	No	-

Iowa Inventory Number	Street Number	Street	Year Built	FEMA Program	SHPO Reviewed	SHPO DOE	Surveyor Opinion - Individually Eligible	Surveyor Opinion - District Eligible	Surveyor Opinion District Status - Contributing or Noncontributing - C/NC
-	203	7th Ave SW	1880	404	No	-	No	No	-
09-00147	204	7th Ave SW	1900	404	Yes	No	No	No	-
-	207	7th Ave SW	1964		No	-	No	No	-
-	208	7th Ave SW	1890	404	No	-	No	No	-
-	214	7th Ave SW	1953		No	-	No	No	-
-	215	7th Ave SW	1975		No	-	No	No	-
-	221	7th Ave SW	1956	404	No	-	No	No	-
-	227	7th Ave SW	1946		No	-	No	No	-
-	302	7th Ave SW	1919		No	-	No	No	-
-	303	7th Ave SW	1946		No	-	No	No	-
-	308	7th Ave SW	1951	404	No	-	No	No	-
-	309	7th Ave SW	1947		No	-	No	No	-
-	314	7th Ave SW	1948		No	-	No	No	-
-	123	7th St NW	1903		No	-	Yes	Yes	C
-	503	7th St NW	1916		No	-	Yes	Yes	C
-	511	7th St NW	1914		No	-	No	Yes	C
-	525	7th St NW	1901		No	-	No	Yes	C
-	611	7th St NW	1940		No	-	No	Yes	C
-	615	7th St NW	1890		No	-	No	Yes	C
-	621	7th St NW	1890		No	-	No	Yes	C
-	703	7th St NW	1890	404	No	-	No	Yes	C
-	202	7th St SW	1898		No	-	Yes	No	-
-	213	7th St SW	1950		No	-	No	No	-
-	214	7th St SW	1941		No	-	Yes	No	-
-	222	7th St SW	1880		No	-	No	No	-
-	302	7th St SW	1992		No	-	No	No	-
-	322	7th St SW	1888		No	-	No	No	-
-	323	7th St SW	1908		No	-	No	No	-
-	416	7th St SW	1893		No	-	No	No	-
-	417	7th St SW	1890		No	-	No	No	-
-	521	7th St SW	1969		No	-	No	No	-

Iowa Inventory Number	Street Number	Street	Year Built	FEMA Program	SHPO Reviewed	SHPO DOE	Surveyor Opinion - Individually Eligible	Surveyor Opinion - District Eligible	Surveyor Opinion District Status - Contributing or Noncontributing - C/NC
09-00153	108	8th Ave SW	1930	404	Yes	No	No	No	-
09-00154	114	8th Ave SW	1890	404	Yes	No	No	No	-
-	120	8th Ave SW	1973		No	-	No	No	-
-	202	8th Ave SW	1910		No	-	No	No	-
-	101	8th Pkwy SE	1957	403/404	No	-	No	No	-
09-00126	105	8th Pkwy SE	1956		Yes	No	No	No	-
-	109	8th Pkwy SE	1956		No	-	No	No	-
-	113	8th Pkwy SE	1955		No	-	No	No	-
-	201	8th Pkwy SE	1956	404	No	-	No	No	-
09-00124	205	8th Pkwy SE	1956		Yes	No	No	No	-
09-00125	209	8th Pkwy SE	1956		Yes	No	No	No	-
-	915	8th St SE	1937	404	No	-	No	No	-
-	303	8th St SW	1959		No	-	No	No	-
-	321	8th St SW	1948		No	-	Yes	No	-
-	417	8th St SW	1918		No	-	No	No	-
-	421	8th St SW	1950		No	-	No	No	-
-	111	Cedar Glyn Dr	1966		No	-	No	No	-
-	210	Cedar Glyn Dr	1973		No	-	No	No	-
-	222	Cedar Glyn Dr	1962		No	-	No	No	-
-	333	Cedar Glyn Dr	1962		No	-	No	No	-
-	808	Cedar Ln	1901		No	-	No	No	-
-	810	Cedar Ln	1951		No	-	No	No	-
-	906	Cedar Ln	1961		No	-	No	No	-
-	1310	Cedar Ln	1990		No	-	No	No	-
09-00136	1400	Cedar Ln	1968		Yes	No	No	No	-
09-00137	1402	Cedar Ln	1968		Yes	No	No	No	-
09-00138	1413	Cedar Ln	1925		Yes	No	No	No	-
-	1605	Cedar Ln	1962	404	No	-	No	No	-
-	1607	Cedar Ln	1960		No	-	No	No	-
-	307	Crestwood Ave	1958		No	-	No	No	-
-	402	Crestwood Ave	1890		No	-	No	No	-

Iowa Inventory Number	Street Number	Street	Year Built	FEMA Program	SHPO Reviewed	SHPO DOE	Surveyor Opinion - Individually Eligible	Surveyor Opinion - District Eligible	Surveyor Opinion District Status - Contributing or Noncontributing - C/NC
09-00155	403	Crestwood Ave	1960		Yes	No	No	No	-
09-00156	608	Crestwood Ave	1980		Yes	No	No	No	-
-	609	Crestwood Ave	1976		No	-	No	No	-
09-00157	703	Crestwood Ave	1940		Yes	No	No	No	-
-	101	E Bremer Ave	1885		No	-	Commercial	No	-
-	211	Eliassen Ave	1999		No	-	No	No	-
-	725	Greenfield Ave	1983		No	-	No	No	-
-	915	Harlington Pl SE	1962	404	No	-	No	No	-
-	916	Harlington Pl SE	1956		No	-	No	No	-
-	922	Harlington Pl SE	1956		No	-	No	No	-
-	927	Harlington Pl SE	1958		No	-	No	No	-
-	928	Harlington Pl SE	1961		No	-	No	No	-
-	1409	Horton Rd	1914		No	-	No	No	-
-	1501	Horton Rd	1978		No	-	No	No	-
-	1701	Horton Rd	1979		No	-	No	No	-
-	1703	Horton Rd	1979		No	-	No	No	-
-	200	Jahnke Ave	1959		No	-	No	No	-
-	212	Jahnke Ave	1955		No	-	No	No	-
-	701	River Park Dr SE	1965		No	-	No	No	-
-	307	W Bremer Ave	1969		No	-	No	No	-
-	420	W Bremer Ave	1898		No	-	No	No	-
-	701	W Bremer Ave	1929		No	-	Yes	No	-
-	702	W Bremer Ave	1898		No	-	No	No	-

i. Map and Photographs of Potential Individually Eligible NRHP Properties by quadrant of the city

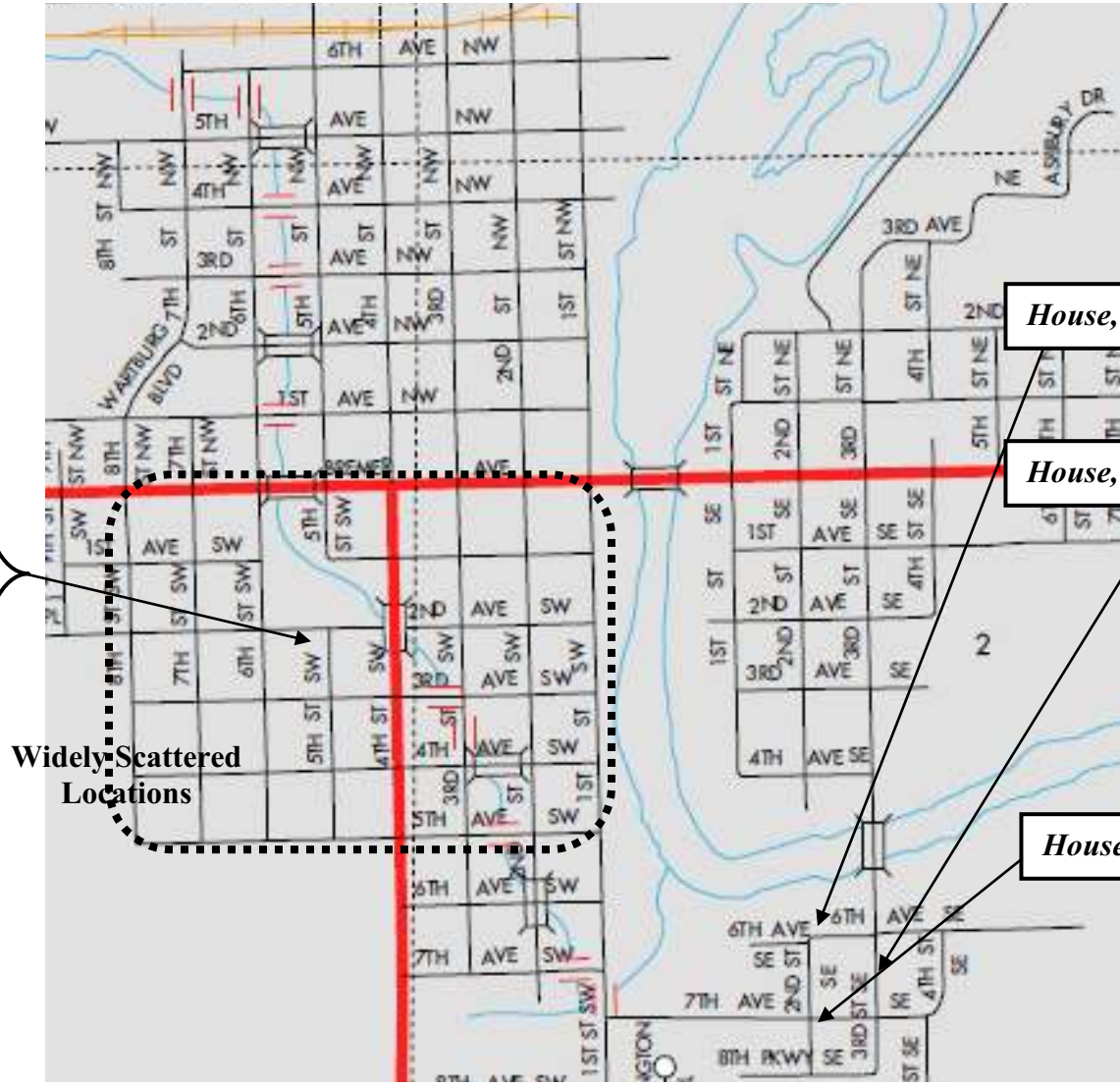


Waverly

Iowa Department of Transportation Map available online at: http://www.iowadotmaps.com/msp/citypdf/Waverly_ci.pdf



- House, 212 1st Ave SW
- House, 416 1st Ave SW
- House, 614 1st Ave SW
- House, 700 1st Ave SW
- House, 322 1st St SW
- House, 502 1st St SW
- House, 318 2nd Ave SW
- House, 401 2nd Ave SW
- House, 717 2nd Ave SW
- House, 122 2nd St SW
- House, 220 2nd St SW
- House, 308 2nd St SW
- House, 415 2nd St SW
- House, 508 2nd St SW
- House, 418 3rd Ave SW
- House, 419 3rd Ave SW
- House, 606 3rd Ave SW
- House, 115 3rd St SW
- House, 208 3rd St SW
- House, 215 3rd St SW
- House, 310 3rd St SW
- House, 315 3rd St SW
- House, 614 3rd St SW
- House, 201 4th St SW
- House, 204 4th St SW
- House, 214 4th St SW
- House, 502 4th St SW
- House, 302 5th Ave SW
- House, 420 5th Ave SW
- House, 514 5th Ave SW
- House, 310 5th St SW
- House, 308 6th Ave SW
- House, 202 7th St SW
- House, 214 7th St SW
- House, 321 8th St SW
- House, 701 W Bremer Ave



Widely Scattered Locations

House, 200 6th Ave SE

House, 716 3rd St SE

House, 205 7th Ave SE



Northwest Waverly:

Potential individually NRHP-eligible properties in this quadrant are all located in the *Northwest Historic District* shown below

Northeast Waverly:

No potential individually NRHP-eligible properties were identified in this quadrant.

Southeast Waverly:

House (at left), **200 6th Ave SE** (1939), left, potentially individually NRHP-eligible

House (below), **716 3rd St SE** (1922), potentially individually NRHP-eligible



House (at left), **205 7th Ave SE** (1925), potentially individually NRHP-eligible

Southwest Waverly:



*House, 212 1st Ave SW (1888),
potentially individually NRHP-eligible*



*House, 416 1st Ave SW (1893), potentially
individually NRHP-eligible*



House, 614 1st Ave SW (1914), potentially individually NRHP-eligible



House, 700 1st Ave SW (1913), potentially individually NRHP-eligible



House, 322 1st St SW (1897), potentially individually NRHP-eligible



House, 502 1st St SW (1880), determined individually NRHP-eligible by SHPO, Criterion A



House, 318 2nd Ave SW (1890), potentially individually NRHP-eligible (RSDE Photograph)



House, 401 2nd Ave SW (1876), potentially individually NRHP-eligible



House, 717 2nd Ave SW (1913), potentially individually NRHP-eligible



House, 122 2nd St SW (1956), potentially individually NRHP-eligible

House, 215 2nd St SW (1898), potentially individually NRHP-eligible



House, 220 2nd St SW (1908), potentially individually NRHP-eligible



House, 308 2nd St SW (1900), potentially individually NRHP-eligible



House, 415 2nd St SW (1932), potentially individually NRHP-eligible



House, 507 2nd St SW (1880), potentially individually NRHP-eligible



House, 508 2nd St SW (1915), potentially individually NRHP-eligible





House, 418 3rd Ave SW (1915), potentially individually NRHP-eligible



House, 419 3rd Ave SW (1919), potentially individually NRHP-eligible



House, 606 3rd Ave SW (1902), potentially individually NRHP-eligible
(RSDE Photograph)



House, 115 3rd St SW (1865), potentially individually NRHP-eligible



House, 208 3rd St SW (1925), potentially individually NRHP-eligible



House, 215 3rd St SW (1916), potentially individually NRHP-eligible (RSDE Photograph)



House, 310 3rd St SW (1910), potentially individually NRHP-eligible (Bremer County Assessor Photograph)



House, 315 3rd St SW (1926), potentially individually NRHP-eligible



House, 614 3rd St SW (1910), potentially individually NRHP-eligible



House, 201 4th St SW (1928), potentially individually NRHP-eligible

House, 204 4th St SW (1888), potentially individually NRHP-eligible



House, 214 4th St SW (1892), potentially individually NRHP-eligible





House, 502 4th St SW (1900), potentially individually NRHP-eligible
(RSDE Photograph)



House, 420 5th Ave SW (1910), potentially individually NRHP-eligible



House, 514 5th Ave SW (1894), potentially individually NRHP-eligible



House, 214 7th St SW (1941), potentially individually NRHP-eligible

House, 310 5th St SW (1920), potentially individually NRHP-eligible



House, 321 8th St SW (1948), potentially individually NRHP-eligible



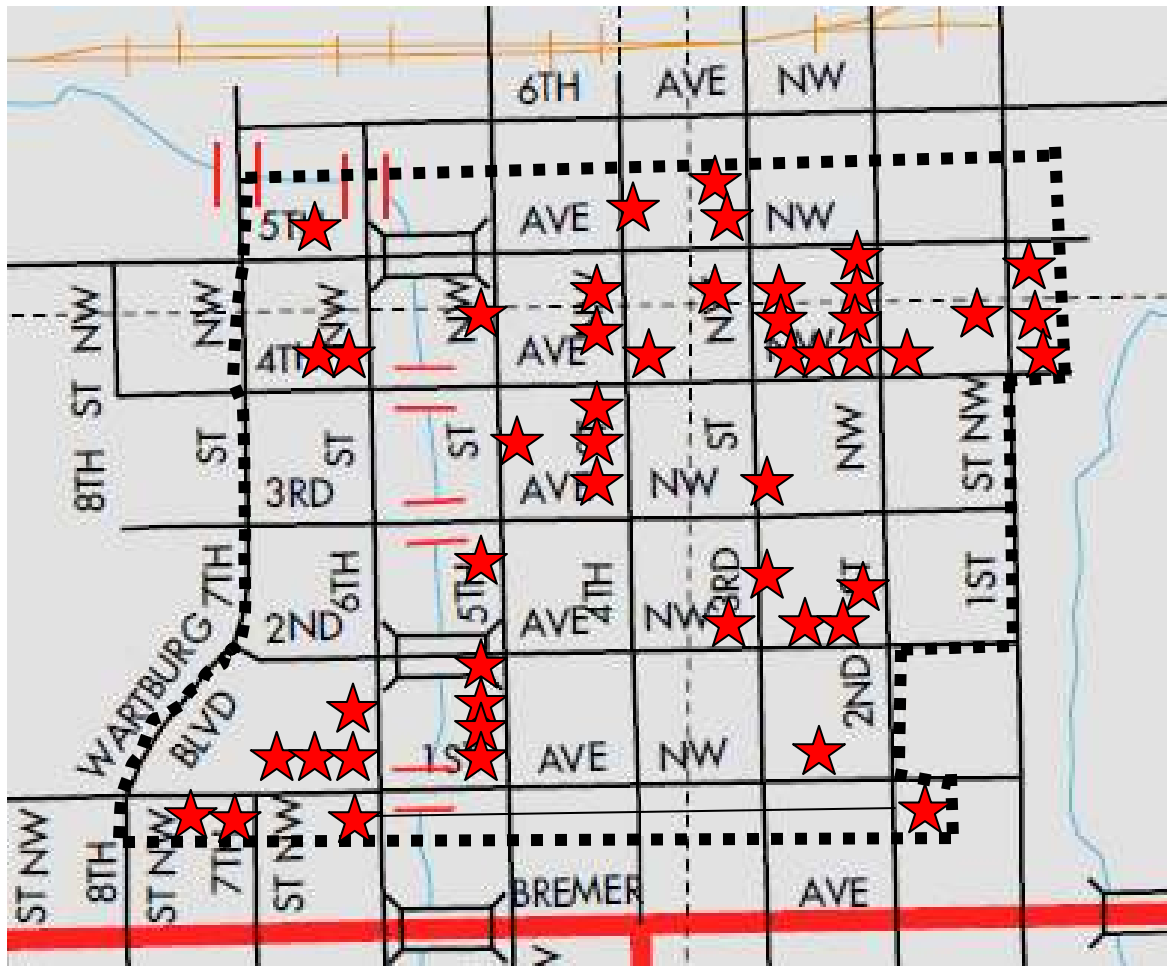
House, 701 W Bremer Ave (1929), potentially individually NRHP-eligible



v. Map and Photographs of Historic Districts

Potentially Individually NRHP-Eligible and Northwest Historic District
District boundaries are preliminary and may be revised after further research.

★ = individually eligible



Northwest Historic District

House, 214 1st Ave NW (1880), Northwest Historic District, Waverly, potentially individually NRHP-eligible and contributing



House, 614 1st Ave NW (1915), Northwest Historic District, Waverly, potentially individually NRHP-eligible, looking



House, 626 1st Ave NW (1904), Northwest Historic District, Waverly, potentially individually NRHP-eligible and contributing



House, 510 1st St NW (1938), Northwest Historic District, Waverly, potentially individually NRHP-eligible and contributing



House, 515 1st St NW (1901), Northwest Historic District, Waverly, potentially individually NRHP-eligible and contributing



House, 524 1st St NW (1921), Northwest Historic District, Waverly, potentially individually NRHP-eligible and contributing



House, 212 2nd Ave NW (1919), Northwest Historic District, Waverly, potentially individually NRHP-eligible and contributing



House, 220 2nd Ave NW (1890), Northwest Historic District, Waverly, potentially individually NRHP-eligible and contributing



House, 116 2nd St NW (1920), Northwest Historic District, Waverly, potentially individually NRHP-eligible and contributing



House, 321 2nd St NW (1935), Northwest Historic District, Waverly, potentially individually NRHP-eligible and contributing



House, 502 2nd St NW (1898), Northwest Historic District, Waverly, potentially individually NRHP-eligible and contributing



House, 503 2nd St NW (1900), Northwest Historic District, Waverly, potentially individually NRHP-eligible and contributing



House, 507 2nd St NW (1916), Northwest Historic District, Waverly, potentially individually NRHP-eligible and contributing



House, 515 2nd St NW (1900), Northwest Historic District, Waverly, potentially individually NRHP-eligible and contributing



House, 519 2nd St NW (1897), Northwest Historic District, Waverly, potentially individually NRHP-eligible and contributing



Wright, John and Bess, House, 420 3rd Ave NW (1916), Northwest Historic District, Waverly, potentially individually NRHP-eligible and contributing



House, 303 3rd St NW (1897), Northwest Historic District, Waverly, potentially individually NRHP-eligible and contributing



House, 316 3rd St NW (1920), Northwest Historic District, Waverly, potentially individually NRHP-eligible and contributing



House, 408 3rd St NW (1920), Northwest Historic District, Waverly, potentially individually NRHP-eligible and contributing



House, 518 3rd St NW (1930), Northwest Historic District, Waverly, potentially individually NRHP-eligible and contributing



House, 520 3rd St NW (1920), Northwest Historic District, Waverly, potentially individually NRHP-eligible and contributing



House, 523 3rd St NW (1958), Northwest Historic District, Waverly, potentially individually NRHP-eligible and contributing



Nearly identical concrete block houses, 617 and 623 3rd Street NW, looking west



House, 617 3rd St NW (1935), Northwest Historic District, Waverly, potentially individually NRHP-eligible and contributing

House, 623 3rd St NW (1905), Northwest Historic District, Waverly, potentially individually NRHP-eligible and contributing



House, 92 4th Ave NW (1955), Northwest Historic District, Waverly, potentially individually NRHP-eligible and contributing



House, 216 4th Ave NW (1896), Northwest Historic District, Waverly, potentially individually NRHP-eligible and contributing



House, 220 4th Ave NW (1921), Northwest Historic District, Waverly, potentially individually NRHP-eligible and contributing



House, 608 4th Ave NW (1911), Northwest Historic District, Waverly, potentially individually NRHP-eligible and contributing



House, 403 4th St NW (1920), Northwest Historic District, Waverly, potentially individually NRHP-eligible and contributing



House, 417 4th St NW (1902), Northwest Historic District, Waverly, potentially individually NRHP-eligible and contributing



House, 421 4th St NW (1917), Northwest Historic District, Waverly, potentially individually NRHP-eligible and contributing



House, 508 4th St NW (1935), Northwest Historic District, Waverly, potentially individually NRHP-eligible and contributing



House, 523 4th St NW (1908), Northwest Historic District, Waverly, potentially individually NRHP-eligible and contributing





House, 222 5th Ave NW (1900), Northwest Historic District, contributing



House, 420 5th Ave NW (1896), Northwest Historic District, Waverly, contributing

House, 614 5th Ave NW (1922), Northwest Historic District, Waverly, potentially individually NRHP-eligible and contributing



House, 203 5th St NW (1908), Northwest Historic District, Waverly, potentially individually NRHP-eligible and contributing



House, 213 5th St NW (1910), Northwest Historic District, Waverly, potentially individually NRHP-eligible and contributing



House, 223 5th St NW (1880), Northwest Historic District, Waverly, potentially individually NRHP-eligible and contributing



House, 323 5th St NW (1910), Northwest Historic District, Waverly, potentially individually NRHP-eligible and contributing



House, 203 6th St NW (1890), Northwest Historic District, Waverly, potentially individually NRHP-eligible and contributing



House, 216 6th St NW (1941), Northwest Historic District, Waverly, contributing





*House and
Garage, 123 7th
St NW (1903),
Northwest
Historic District,
Waverly,
potentially
individually
NRHP-eligible
and contributing*



House, 503 7th St NW (1916), Northwest Historic District, Waverly, potentially individually NRHP-eligible and contributing

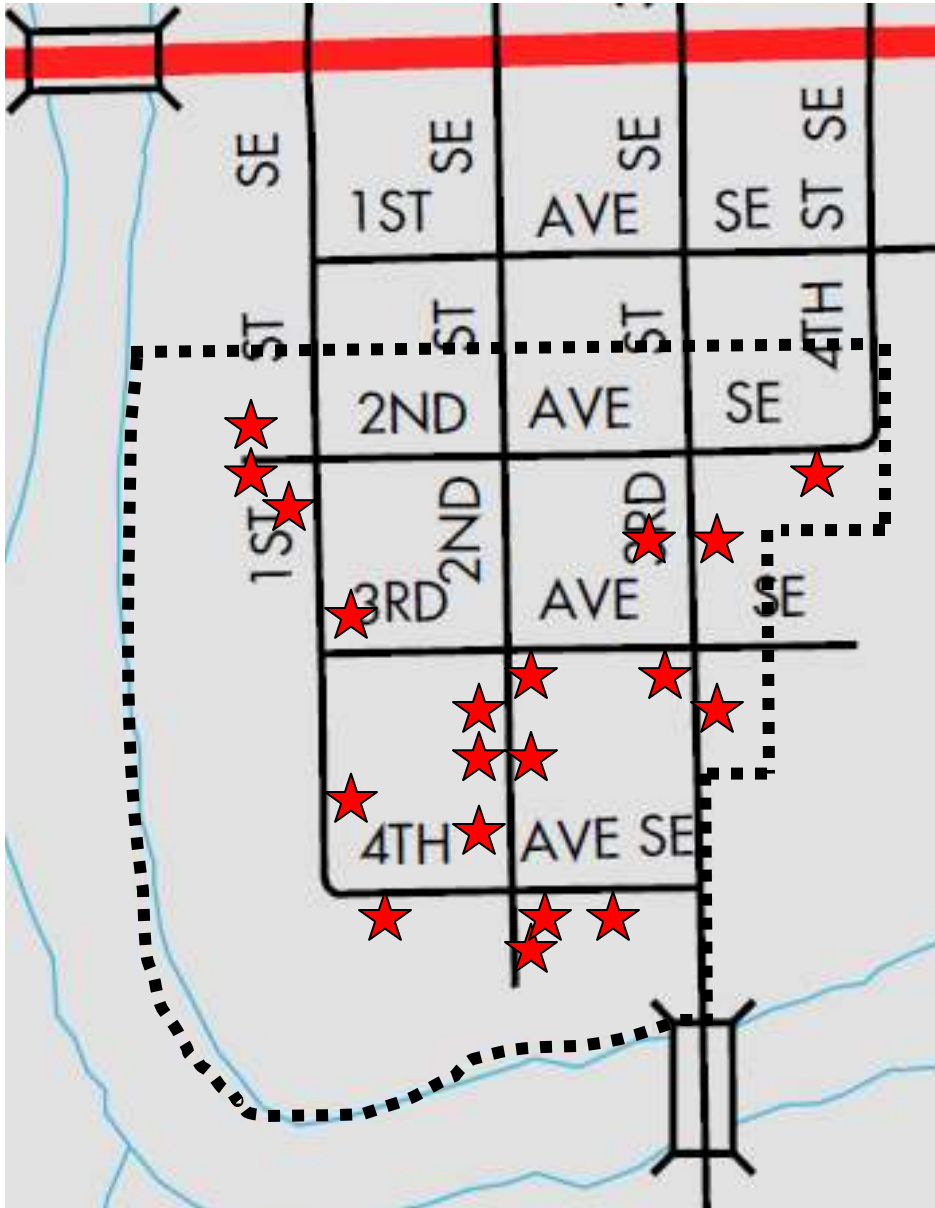


Potentially Individually NRHP-Eligible and Northwest Historic District

District boundaries are preliminary and may be revised after further research.



★ = individually eligible



Southeast/Old Fourth Ward Historic District

House, 302 1st St SE (1935), Southeast/Old Fourth Ward Historic District, Waverly, potentially individually NRHP-eligible and contributing



House, 321 1st St SE (1900), Southeast/Old Fourth Ward Historic District, Waverly, potentially individually NRHP-eligible and contributing



House, 413 1st St SE (1915), Southeast/Old Fourth Ward Historic District, Waverly, potentially individually NRHP-eligible and contributing





House, 88 2nd Ave SE (1895), Southeast/Old Fourth Ward Historic District, Waverly, contributing



House, 91 2nd Ave SE (1925), Southeast/Old Fourth Ward Historic District, Waverly, potentially individually NRHP-eligible and contributing



House, 410 2nd St SE (1938), Southeast/Old Fourth Ward Historic District, Waverly, potentially individually NRHP-eligible and contributing (Bremer County Assessor Photograph)



House, 417 2nd St SE (1920), Southeast/Old Fourth Ward Historic District, Waverly, potentially individually NRHP-eligible and contributing

House, 416 2nd St SE (1925), Southeast/Old Fourth Ward Historic District, Waverly, potentially individually NRHP-eligible and contributing



House, 422 2nd St SE (1935), Southeast/Old Fourth Ward Historic District, Waverly, potentially individually NRHP-eligible and contributing



House, 517 2nd St SE (1925), Southeast/Old Fourth Ward Historic District, Waverly, potentially individually NRHP-eligible and contributing



House, 322 3rd St SE (1890), Southeast/Old Fourth Ward Historic District, Waverly, potentially individually NRHP-eligible and contributing



House, 323 3rd St SE (1925), Southeast/Old Fourth Ward Historic District, Waverly, potentially individually NRHP-eligible and contributing





House, 402 3rd St SE (1924), Southeast/Old Fourth Ward Historic District, Waverly, potentially individually NRHP-eligible and contributing



House, 407 3rd St SE (1910), Southeast/Old Fourth Ward Historic District, Waverly, potentially individually NRHP-eligible and contributing

House, 108 4th Ave SE (1906), Southeast/Old Fourth Ward Historic District, Waverly, potentially individually NRHP-eligible and contributing



House, 208 4th Ave SE (1896), Southeast/Old Fourth Ward Historic District, Waverly, potentially individually NRHP-eligible and contributing



House, 222 4th Ave SE (1901), Southeast/Old Fourth Ward Historic District, Waverly, potentially individually NRHP-eligible and contributing

