

Winter 2020

Jan-Feb-Mar



Department of Public Works

Inside This Edition

- ❖ Construction Highs and Lows
- ❖ 4th Street SW Improvements
- ❖ Snow Removal
- ❖ Holiday Garbage Schedules
- ❖ Garbage & Recycling Reminders
- ❖ Don't Get Buried by Snow

“Serving the Community Throughout the Seasons”

Public Works Department

Airport	Water
Garbage	Streets
Recycling	Engineering
Yard Waste Site	Wastewater Treatment
Equipment Services	Sewer Line Maintenance
Public Works Administration	

Construction Highs and Lows

Construction projects can sometimes go very well and sometimes not so well. The weather and unforeseen conditions can cause issues with a project. This year the City’s construction projects had some highs and lows.

Airport Runway Extension

Waverly’s Airport runway was expected to be closed for over two months while the grading work for the runway extension project was completed.

But due to great summer weather in August, the runway was closed for only 30 calendar days, which made for a happy contractor and even happier pilots.

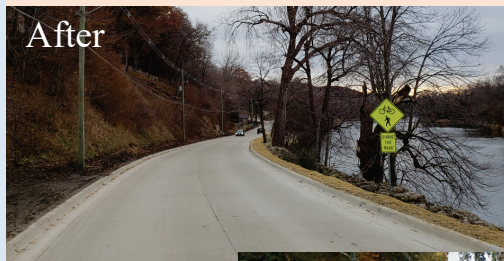
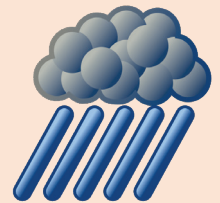
Paving the 400-ft extension and new turn-around is scheduled for spring 2020.



Cedar Lane Reconstruction

The reconstruction of the south end of Cedar Lane had lots of delays due to a very rainy fall. Over a six-week period in September and October there were only 12 days when the weather and site conditions were suitable for working.

Final grading, seeding and restoration along with smoothing the roadway will now occur in spring 2020.



Before



4th Street SW Improvements 2020



Proposed view of new roadway after construction.

The new concrete roadway will match the road width and 3-lane configuration of the newer north-end section that was completed in 2014 near Dairy Queen (shown above).

The middle left-turn lane will make the corridor safer and reduce rear-end collisions.

The 4th Street SW Improvements project, from near 3rd Avenue SW to 8th Avenue SW, is scheduled for the summer and fall of 2020.

Work will include the total replacement of the roadway and the water, sewer and storm utilities.



Existing view of current roadway.



Snow Removal

Priorities for Snow Removal from Streets

The following snow removal priorities have been established in order to enhance public safety and make efficient use of available resources:

- 1) Primary snow routes which include Bremer Avenue and streets to the hospital and schools;
- 2) remaining snow routes;
- 3) airport runway;
- 4) residential streets;
- 5) cul-de-sacs;
- 6) alleys;
- 7) public parking lots, a day or two after a snow event.

Vehicles that are normally parked on the Emergency Snow Routes must be moved immediately during snow conditions so these streets can be cleared of snow from curb to curb. **(As a reminder, please note that on all streets throughout the whole year, vehicles cannot be parked in one place for more than 48 hours.)**



There are exceptions to all of these priorities depending upon the amount and time of snowfall. During blizzard conditions priorities will vary, again, depending on the amount of snow and drifting.

If severe weather results in the need to cancel or delay garbage and/or recycling collection, the Public Works Department will announce it on KWAY Radio 99.3 FM, the City of Waverly's Facebook page and the City's website at www.waverlyia.com.

Holiday Garbage & Tree Disposal Schedules

Holiday Garbage Collection

City of Waverly offices closed December 24, 25 & January 1.
Recycling Center will also be closed these days.

If your normal garbage day is:	Your garbage and/or recycling will be picked up on:
Tuesday, Dec. 24	Monday, Dec. 23 (Garbage)
Wednesday, Dec. 25	Thursday, Dec. 26 (Garbage)
Wednesday, Jan. 1	Thursday, Jan. 2 (Garbage & Recycling)



Recycle Gift Boxes

Please recycle the cardboard boxes from your Christmas gifts. Single-layer cardboard and corrugated cardboard can be picked up by the Recycling Truck during a Curbside Recycling Week or you can take boxes directly to the Recycling Center. Gift wrapping paper cannot be recycled.

Christmas Tree Collection



From December 30, 2019, through January 10, 2020, the City of Waverly's Public Services will assist in the collection of Christmas trees from Waverly residents. To take advantage of this service, place your tree at the curb in front of your residence (not in your alley) anytime during this period.

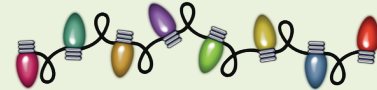
Please have all tinsel, decorations and plastic tree bag removed prior to placement at your curb. Wreaths and garland will also be picked up during these days. No trees, wreaths or garland will be picked up **after** January 10th.

Reminders for Garbage & Recycling Collection



Listed below are some reminders to ensure your garbage and recycling containers get emptied:

- Place your garbage and recycling containers behind the curb or at the end of your driveway whenever possible, especially during the winter months, otherwise the snow plow may knock them over.
- Place your garbage container at least 3 feet away from your recycling container. This will give the garbage truck's automatic arm room to grab the container.
- Garbage containers with yellow lids are emptied every other week. A garbage container with a yellow lid can be placed out for collection during an "off" week as long as a garbage tag is placed on the top item in your container.
- Curbside recycling is also collected every other week.
- A 2020 calendar insert for yellow-lid garbage containers and curbside recycling is enclosed within this newsletter.
 - This insert lists the recyclable items the City collects curbside and at the Recycling Center.
 - This insert also includes garbage and recycling collection for the 2020 holidays.
- Drop off your old and broken strings of Christmas lights at the Recycling Center. The wire in these lights will be recycled.
- Glass, Styrofoam and plastic bags cannot be collected curbside.
- Make sure all food containers are clean.
- Call 352-9065 or 352-6247 to rent a 35 or 65-gallon recycling container for only \$2.90 a month. You must rent a City container for curbside collection of recyclables. The small totes are no longer emptied by the City's Curbside Recycling Truck.
- If you do not wish to rent a recycling container, you can still continue to recycle by taking your recycling directly to the City's Recycling Center at 2800 5th Avenue NW.
- Shred your private papers at the Recycling Center using the heavy-duty paper shredder.



City of Waverly
 Department of Public Works
 200 1st Street NE
 P.O. Box 616
 Waverly, IA 50677

Presort
 Standard
 U.S. Postage
 Waverly, IA
 Permit No.2

Postal Customer Carrier Route Presort



CITY OF
WAVERLY
 Department of Public Works

Don't Get Buried by Snow

Quarterly Calendar for Curbside Recycling and Garbage Containers with Yellow Lids (Boxed Weeks)

	S	M	T	W	Th	F	S
January	29	30	31	1*	2	3	4
	5	6	7	8	9	10	11
	12	13	14	15	16	17	18
	19	20	21	22	23	24	25
	26	27	28	29	30	31	1
February	2	3	4	5	6	7	8
	9	10	11	12	13	14	15
	16	17	18	19	20	21	22
	23	24	25	26	27	28	29
March	1	2	3	4	5	6	7
	8	9	10	11	12	13	14
	15	16	17	18	19	20	21
	22	23	24	25	26	27	28
	29	30	31	1	2	3	4

City offices closed **Wednesday, January 1st**.
 Garbage & Recycling will be picked up
 Thursday, January 2nd.



Clear snow from your sidewalk within 24-48 hours.
 Park in your driveway before the snow falls. This helps the snow plow drivers and you do not have to shovel the extra snow from around your vehicle.

Please consider adopting a hydrant near your house or business and clear the snow about four feet away from it after each snow event. With over 600 hydrants in Waverly, your assistance is greatly appreciated to help ensure a more rapid response by the Fire Department in the event of a fire during the winter.



In the event of a fire, this hydrant is ready for use by the Waverly Municipal Fire Department.

Place your garbage and recycling containers at the end of your driveway in lieu of in the street.

If garbage and recycling collection need to be cancelled or delayed due to a snow event, the City will place a notice on Facebook, website and will notify KWAY Radio 99.3 FM and KWVL-TV.

www.waverlyia.com

Public Works Administration 319-352-9065
 Public Services 319-352-6247