

# Fall 2022

Oct-Nov-Dec

# CITY OF WAVERLY

Department of Public Works

### Inside This Edition

- ❖ Major Collector Roadway Extensions
- ❖ City Project Updates
- ❖ Fall Yard Waste Disposal Options
- ❖ Burning Guidelines
- ❖ Delivery of Wood Mulch & Compost
- ❖ Limestone Chips for Sale

## “Serving the Community Throughout the Seasons”

# Public Works Department

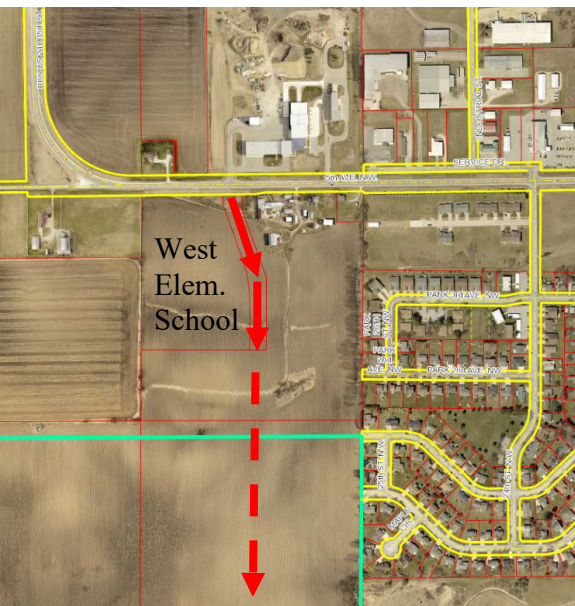
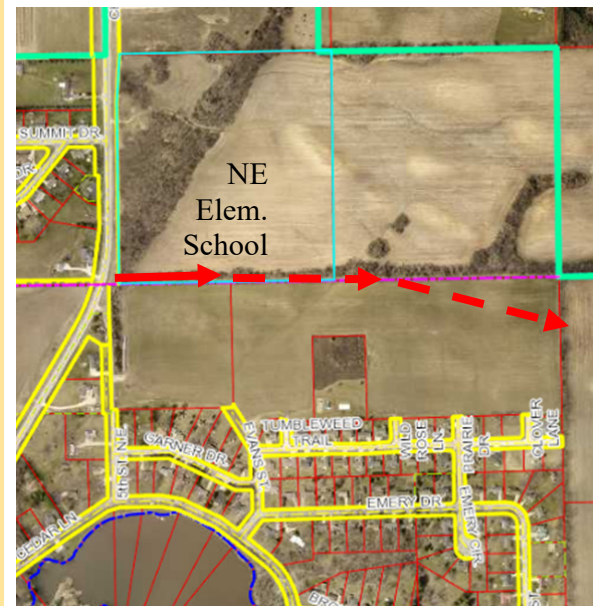
- Airport
- Garbage
- Recycling
- Yard Waste Site
- Equipment Services
- Public Works Administration
- Water
- Streets
- Engineering
- Wastewater Treatment
- Sewer Line Maintenance

## Major Collector Roadway Extensions

The two new elementary schools under construction are located in west and northeast Waverly. Both regions were identified on Waverly’s Comprehensive Land Use Plan as locations for future residential expansion. With growth comes the need for good transportation corridors. Both areas of the community were identified as in need of new “Major Collector” streets. Each school site is constructing the beginnings of a major collector roadway. The northeast collector will eventually connect Horton Road and Bremer Road, and the west collector will connect Business 218 North with IA 3 West.



The west (left side) collector intersection will align with the west entrance into the Public Services Facility. Heading south towards IA 3 will allow for the extension of streets in the Willow Lawn Subdivision to eventually connect to the future collector.



The northeast (right side) collector will intersect Horton Road at the bend. Heading east towards Bremer Road will allow for the extension of streets in the Prairie Park Subdivision to eventually connect to the future collector.

# WPC Facility Improvements

Concrete work on the new oxidation ditch is nearing completion. The next phase of work will involve lots of piping and mechanical work so the tank on the east side can be placed into service before winter.

Over the next 12 months, additional project improvements include dismantling the second trickling filter tower and building a second biosolids (a.k.a. sludge) storage tank.



**Trivia:** Each side of the oxidation ditch will hold and continuously treat 1,150,000 gallons of wastewater. For a size comparison, Waverly's largest water tower has a maximum capacity of 750,000 gallons.

# Cedar Lane Reconstruction

The reconstruction of Cedar Lane is finally complete 36 years after the project was mentioned in Waverly's 1986 Comprehensive Plan. To be fair, the project was one of many identified with a 10 to 20-year improvement window, and major floods in 1999 and 2008 rightfully shifted priorities. The scenic Cedar Lane is popular with motorists, bicyclists and pedestrians - so remember to share the roadway and stay safe. It's good to be done!



# Did You Know?

Glass is not collected with curbside recycling collection because of the compaction operation of the recycling truck, but glass can be recycled at the Recycling Center! Clear and colored glass that is cleaned of food debris can be recycled. Pyrex, windows, baking dishes, light bulbs or tinted glass **cannot** be accepted.



# Yard Waste Disposal Options



## FREE Collection of Leaves / Yard Waste

The 2022 Fall Leaf & Yard Waste Collection is scheduled for six weeks from **October 3<sup>rd</sup> thru November 11<sup>th</sup>**. Collection will be made on or shortly after your regular garbage collection day. Further details are listed below:

- Leaves and yard waste must be placed in **biodegradable bags**.
- Leaves and yard waste in plastic bags will not be picked up free of charge.
- Place bags of leaves at your front curb on your regular garbage day by 7:00 a.m. during the weeks of **October 3<sup>rd</sup> through November 11<sup>th</sup>**.
- Sticks and brush are not picked up during the Fall Leaf Collection weeks.
- Call 319-352-6247 if you have any questions.



## Yard Waste Site

✂️ Clip & Save

2022 Yard Waste Site Schedule for Fall Closed After November 19, 2022	
Days	Hours
Mon. thru Fri.	7:00 am – 5:30 pm
Saturday	8:00 am – 4:00 pm

The Yard Waste Site is located at 2800 5<sup>th</sup> Avenue NW (north of the Recycling Center). Waverly residents may dispose of leaves, grass clippings, garden waste, trees, branches, and brush here at no charge.

The processed materials of compost and wood mulch are free to residents. A City employee is available to load wood mulch onto pickup trucks or trailers from 1:00 p.m. – 3:00 p.m. on Fridays. (See back page for delivery options.) The Yard Waste Site is scheduled to close for the year after November 19<sup>th</sup>.

## Leaf Vacuum Service



Leaf vacuuming is a service available to citizens of Waverly who do not want to bag their leaves. Leaves need to be placed between the sidewalk & curb area, not in the street, keeping as many sticks out of the pile as possible. The fee for this service is \$30 per trip. The number of trips required depends on the size of the yard and the volume of leaves. Call or email [PublicServices@waverlyia.com](mailto:PublicServices@waverlyia.com) to schedule an appointment. Leaf vacuuming service will end for the season by November 18<sup>th</sup> or when the daytime air temperature drops below freezing.

## Burning Guidelines

The burning of yard waste is only allowed on parcels **greater than one-half acre**. A burn permit is required and can be obtained through Waverly's Zoning Department in City Hall (352-9208). This permitted burning may only take place from 9:00 a.m. to sundown. Please do not burn wet material or on windy days.

In lieu of burning, the City encourages the disposal of leaves, brush, etc. at the Yard Waste Site for composting and mulching.



Recreational fires using clean, dry wood are allowed by all residents (no permit required). Fire rings cannot be greater than 4 feet in diameter. There are no time restrictions for recreational fires.

## Curbside Recycling

Is your curbside recycling can right-sized? The City offers three sizes of recycling cans. The 35 and 65 gallon cans are available for \$3.50 per month. If you have a larger family, or consistently have a lot of recycling, a 95 gallon can is available for \$5.55 per month.

The City utilizes automated trucks to collect curbside recycling. For the safety of our operators, we request that all materials for pick-up fit inside your recycling can. If you have extra recycling, it can be brought to the Recycling Center.

The Recycling Center is at 2800 5<sup>th</sup> Avenue NW. It is open Monday – Friday from 7 a.m. to 5:30 p.m., and on Saturday from 8 a.m. to 4 p.m.

City of Waverly  
 Department of Public Works  
 2800 5<sup>th</sup> Avenue NW  
 P.O. Box 616  
 Waverly, IA 50677

Presort  
 Standard  
 U.S. Postage  
 Waverly, IA  
 Permit No.2

## Postal Customer Carrier Route Presort

### Limestone Chips

The City of Waverly is again selling the extra rock chips from seal coating projects.

After the City's streets are seal coated each year, about 10% of the limestone rock chips are swept up with the City's street sweepers. This excess material can be used by contractors as bedding material for water and sewer services or used by residents for projects requiring a base material.



Limestone chips can also be delivered within City Limits for the fees listed below. Call Public Services at 319-352-6247 with any questions and to check availability.

### Wood Mulch and Compost

This fall the City of Waverly offers compost and wood mulch to City residents to pick up at the Yard Waste Site for free. Residents may also choose to schedule the delivery of wood mulch and compost for the fees listed below. The City can load mulch onto private vehicles from 1:00 p.m. – 3:00 p.m. on Fridays. Compost must be hand shoveled.

- ❖ One cubic yard of mulch covers an area of approximately 100 square feet at 3 inches thick.
- ❖ Compost has not been screened and may contain sticks and some foreign debris.

### Delivery Fees



**Mulch:** \$25 for 3 cubic yards  
**Compost:** \$25 for 3 cubic yards  
**Limestone Chips:** \$35 for 2 tons



**Mulch:** \$30 for 6 cubic yards  
**Compost:** \$30 for 6 cubic yards  
**Limestone Chips:** \$70 for 8 tons



**Mulch:** \$35 for 12 cubic yards  
**Compost:** \$35 for 12 cubic yards  
**Limestone Chips:** \$100 for 14 tons

### Quarterly Calendar for Recycling and Garbage

This quarterly calendar shows the weeks (highlighted) for collection of Waverly's Curbside Recycling & Yellow-Lid Garbage Containers.

Reminder: A garbage container with a yellow lid needs a garbage tag placed on top item/bag in container if it is placed out for collection during an "off" week.

	S	M	T	W	Th	F	S
							1
October	2	3	4	5	6	7	8
	9	10	11	12	13	14	15
	16	17	18	19	20	21	22
	23	24	25	26	27	28	29
	30	31	1	2	3	4	5
November	6	7	8	9	10	11	12
	13	14	15	16	17	18	19
	20	21	22	23	24	25	26
	27	28	29	30	1	2	3
December	4	5	6	7	8	9	10
	11	12	13	14	15	16	17
	18	19	20	21	22	23	24
	25	26	27	28	29	30	31

\*City offices will be closed on the following days:

- Thursday, Nov. 24 – garbage picked up Wed., Nov. 23
- Friday, Nov. 25 – garbage picked up Mon., Nov. 28
- Friday, Dec. 23 – garbage picked up Thurs., Dec. 22
- Monday, Dec. 26 – garbage & curbside recycling picked up Tues., Dec. 27
- Monday, Jan. 2- garbage picked up Tues., Jan. 3

Have garbage curbside by 7 a.m. to ensure pick-up.



Learn more about **Waverly Public Services** by scanning the QR code. Contact us with questions at **PublicServices@waverlyia.com**

[www.waverlyia.com](http://www.waverlyia.com)

Engineering 319-352-9065  
 Public Services 319-352-6247

Waverly's Department of Public Works ... "Serving the Community Throughout the Seasons"