

OFFICIAL VISITOR'S GUIDE



Welcome to WAVERLY

& BREMER COUNTY, IOWA



EVENTS



THINGS TO DO



SHOPPING



DINING



CUSB Bank



CUSB Bank Simply Free Checking puts you first!



Simply Free Checking

"I want a free account that's really free!"

- No minimum balance
- No monthly service charge
- No per check charge

Free with every new checking account:

- Debit Card
- Online Banking and Bill Pay
- Return of check images
- E-statements available
- Easy-to-balance monthly statement
- Mobile Banking
- My Mobile Deposit

Additional CUSB Bank Services:

- Direct Deposit
- Automatic Payments
- Telephone Banking
- Savings Accounts
- Mortgage Loans
- Consumer Loans
- Safe Deposit Boxes
- Certificates of Deposit
- Retirement Plans
- Investment Services
- Accounts and Services for Your Business

FREE comes first at CUSB Bank!

SIMPLY FREE CHECKING

Free from minimum balance requirements?	Yes
Free from direct deposit requirements?	Yes
Free check images?	Yes
Cash back for your old checks and debit cards?	Yes
Free gift for opening a new account?	Yes
Free debit cards?	Yes
Free gifts for referring friends?	Yes

Offer good on personal accounts only; business and corporate accounts do not qualify for these plans. Bank rules and regulations apply. Minimum opening deposit is only \$25. Ask us for details.

We have Simply Free Checking, Free Gifts, and Cash Back for your unused checks and debit cards.

Your Next Move.
Call, click, or come in today!

For ATM locations, or to learn more about CUSB Bank, visit us online at: www.cusb.com



**CUSB Bank
WAVERLY**
319-352-3500
933 16th St. SW
PO Box 845
Waverly, IA 50677



**CUSB Bank
SHELL ROCK**
319-885-4327
104 N. Cherry St.
PO Box 430
Shell Rock, IA 50670

Offices also in Cresco, Ridgeway, Lime Springs, Osage & Charles City.



6



10



13



18



33

what's inside

05 WELCOME TO WAVERLY	18 WHERE TO DINE & DRINK	27 DEMOGRAPHICS & SERVICES
Arts, Entertainment, Family Fun, Golf Courses, Historical Interests, Parks & Recreation	Restaurants, Diners, Pubs and Event & Meeting Spaces	
06 WHAT TO DO	22 WHERE TO STAY	33 DISCOVER BREMER COUNTY
Arts, Entertainment, Family Fun, Golf Courses, Historical Interests, Parks & Recreation	Hotels & Campgrounds	Denver, Frederika, Janesville, Plainfield, Readlyn, Sumner & Tripoli
10 ANNUAL CALENDAR OF EVENTS	24 WHERE TO WORSHIP	41 IMPORTANT INFO
	Waverly Churches	
13 WHERE TO SHOP	26 WARTBURG COLLEGE	42 MAPS
Shop Local, Buy Local		

PUBLISHED BY THE WAVERLY NEWSPAPERS SUMMER 2023

311 W. BREMER AVE. WAVERLY, IOWA 319-352-3334 WAVERLYNEWSPAPERS.COM

Tracy Cummings PUBLISHER

Anelia K. Dimitrova REGIONAL EDITOR

Melaine Buzynski GENERAL MANAGER

DeAnn Meyer ADVERTISING

Aleina Schmidt OFFICE MANAGER

Carrie Wright GRAPHIC DESIGNER

Photos courtesy of Waverly Newspapers, the Waverly Chamber of Commerce and Community Members.



**CHECK OUT OUR VISITORS CENTER
WAVERLY CHAMBER OF COMMERCE
118 East Bremer Ave. Waverly, Iowa
319-352-4526
www.waverlychamber.com**



Cover photo taken by Lisa Ellingworth, Waverly Car Cruises

100%

All Butler-Bremer Communities are 100% Fiber. Get Your Internet, TV & Phone from Us!



Benefits of a Fiber Optic Network:

- **It's the Best** - Fiber is the best communication technology in the world - you have it!
- **Remote Options** - You can work from home, attend school with distance learning or access doctors from your computer.
- **Life in the Heartland** - Fiber makes our communities desirable places to live, work and raise a family in a rural environment with state-of-the-art technology.
- **Stronger Tax Base & Property Values** - More people, homes, & businesses mean a larger and stronger tax base; your property is worth more.
- **Progressive Farming** - Precision agriculture, and the many opportunities it brings for farmers, is made possible by Fiber Internet.
- **You'll Be in the Top 30%** - This new network will put you in the top 30% of US citizens who have fiber available to them!

Serving communities and rural
areas of Bremer, Butler
& Chickasaw Counties

Fiber Internet • Digital TV • Phone



Your Connection to the World

www.butler-bremer.com

319-276-4458

Interested in becoming a customer? Call us today at 319-276-4458





Welcome to Waverly

Located in northeast Iowa, Waverly is a beautiful, extraordinary community of over 10,000 residents. It is a place where families thrive and a community where residents enjoy a high quality of life, a bustling downtown and a college town atmosphere.

Waverly's central business district spans the Cedar River, while numerous other businesses and industries are uniquely nestled throughout the community. An impressive inventory of community assets includes 12 miles of recreational trails, two 18-hole golf courses, a spectacular public

library, a top-flight indoor recreation center, and abundant cultural opportunities that can only be found in a college town.

Waverly's downtown is designated as a Main Street Iowa District. The district is home to a quality mix of service businesses, specialty shops, destination stores and restaurants. These businesses along with others are part of Waverly's evolving "life and leisure" business clusters.

Waverly maintains a focus on balanced growth and is an ideal location for commercial, industrial and corporate headquarters and retail developments.

City government and economic development leaders have set the course for a prosperous future through their strong commitment to a safe community, investment in parks, trails and services, and through a unique partnership formed to bring economic success through the creation of employment opportunities and a revitalized downtown.

Waverly is a place where life comes together. It's your place. Welcome to Waverly.



Looking for ways to get plugged into the community or help grow your business? Contact the Waverly Chamber today! 319-352-4526



Looking to relocate? Check out Waverly Welcome Home to find out more today! waverlywelcomehome.com

WHAT TO DO



Concerts in Kohlmann

Wake up early or wake up late, whenever you wake up, adventure awaits! Waverly offers multiple outdoor opportunities on the trails, on sports fields, down the block at your neighborhood park, on an award-winning golf course, or at the pool. In Waverly, we believe in working hard to play even harder. **Welcome to Waverly!**

ARTS & ENTERTAINMENT

CONCERTS IN KOHLMANN

Kohlmann Park

101 1st St. NW

www.waverlychamber.com

Waverly's summer concert series, which features the Greater Waverly Municipal Band along with other local entertainment, takes place in June & July.

WAVERLY CHAMBER MUSIC SERIES

www.waverlychambermusic.org

Offering access to high quality art and music experiences to one's community is a fundamental aspect of how the arts enrich our local culture and our quality of life. The mission of the WCMS is to bring people together for the enjoyment of community and music by providing high-quality chamber music concerts for Waverly and the Cedar Valley.

WARTBURG COMMUNITY SYMPHONY

100 Wartburg Blvd.

319-352-8200

www.wartburg.edu/symphony

Since 1952, Waverly has been one of the smallest communities in the country to support a semi-professional symphony orchestra. The symphony performs four concerts a season, September through April. The symphony is open by audition to musicians from the Waverly area and to Wartburg College students and faculty.

WARTBURG COLLEGE MUSIC DEPARTMENT

100 Wartburg Blvd.

www.wartburg.edu/music

Wartburg College is the epicenter for arts and culture within the entire Waverly community. Nearly 500 students participate in Wartburg's 18+ internationally acclaimed music ensembles, and dozens of concerts and recitals are held throughout the academic year. All are open to the public and most offer free admission.

FAMILY FUN

WAVERLY PUBLIC LIBRARY

1500 W. Bremer Ave.

319-352-1223

www.waverlyia.com/library

The Waverly Public Library is your window to information, recreation, and community. The library is a vital part of Waverly, and a highlight for residents and visitors alike. Whether you stop in to read the newspaper, preview the latest best seller, or attend any of the popular events for families, children, teens, or adults, there is always something to inspire you at the Waverly Public Library.

BUTTERFLY GARDENS

1500 W. Bremer Ave.

Come stroll along the paths and enjoy native plants and flowers. There are several benches, tables, and patio areas which make the garden an ideal location for snapping photos, reading, having a picnic, or working on your laptop or tablet while connected to the library's wi-fi network.

WARTBURG-WAVERLY SPORTS & WELLNESS CENTER (THE W)

100 Wartburg Blvd.

319-352-8311

www.the-w.org

*See page 26 for more details.

WAVERLY BOWL INN

915 4th St SW

***Opening Fall 2023**

HISTORICAL INTERESTS

BREMER COUNTY HISTORICAL MUSEUM

402 W. Bremer Ave.
319-352-1862

www.bremercountyhistoricalsociety.org

Constructed in 1862 of native timber and brick from a local kiln, the Bremer County Historical Museum is a three-story brick structure and was the first large hotel and stagecoach stop in the area. Succeeding the hotel, the building housed the CaPhenin Chemical Co., a pill factory owned by the Dr. Frank Osincup family. Now the building houses many treasures from the area and tells of tales of life in Waverly and Bremer County. With artifact displays, theme rooms take visitors back to a time we no longer know. The museum is open May through October on Tuesday through Saturday from 1:00-4:00 p.m.

IRA STURDEVANT HOUSE

502 1st St. SW

Built of brick in 1855 and 1856, the Ira and Asenath Sturdevant house is the oldest surviving dwelling in Waverly, Iowa. Sold outside the Sturdevant family after Ira's widow, Asenath, died in 1867, descendants repurchased it at a sheriff's sale on April 14, 2009, loaning the money to the Iowa Historic Preservation Alliance (now Preservation Iowa) who will own it until it has its own separate non-profit organization.

VETERANS TRIBUTE

Bremer Ave. & 4th St. SW

www.waverlyvets.us/veterans-tribute.html

Located on the corner of West Bremer Avenue and Fourth St. SW, the Waverly Area Veterans Tribute is the local site for many celebrations honoring veterans. An area in front of the tribute presents engraved bricks memorializing all veterans.

GOLF COURSES

PRAIRIE LINKS GOLF COURSE

19 Eagle Ridge Dr.
319-483-1765

www.prairielinksgolf.com

This British style "links" course features large elevated greens, spacious watered fairways, challenging sand play and attractive water features. Rated the number one golf course in Iowa by Golf Advisor in 2017 and 2018 it is privately owned and open to the public.

WAVERLY MUNICIPAL GOLF COURSE

705 8th St. SW
319-352-1530

www.waverlygolf.com

A progressive 18 hole public golf course. Prepare yourself for an unparalleled golfing experience. The course is a pleasure for golfers of any skill level to play. Test your accuracy with the fairways, water hazards and sand traps; they have everything you need to challenge you and improve your game.



CrawDaddy
OUTDOORS
Where Your Adventures Begin

207 E Bremer Ave, Waverly | (319) 352-9129
WWW.CRAWDADDYOUTDOORS.COM

Find us on Facebook

Golf Waverly!

TAKE ADVANTAGE OF THE CEDAR VALLEY'S BEST VALUE!

WAVERLY Municipal Golf Course

WAVERLY MUNICIPAL GOLF COURSE

MEMBERSHIP INFO WAVERLYGOLF.COM

MON-FRI BEFORE 2 PM

18 HOLES + CART FOR \$29

★★★★★

705 8TH ST. SW, WAVERLY, IA

PARKS & RECREATION



Waverly prides itself as being a community with fantastic outdoor spaces and stunning views. The City of Waverly manages 21 individual parks in the community. From play units to basketball courts, pickleball & disc golf, Waverly's parks have something for everyone. For a complete listing of parks & recreational opportunities, visit www.waverlychamber.com. **Welcome to Waverly!**

CITY PARKS

PELIKAN PARK

1401 Cedar Lane Dr.

Along the back waters of the Cedar River on Cedar Lane east of Horton Road, Pelikan Park is a popular area for fishing or ice skating.

BROOKWOOD PARK

415 6th Ave. SE

A large area along the Cedar River boasts beautiful views and is the home to the Brookwood Park Disc Golf Course. This newly expanded 18 hole course runs along the scenic Cedar River. It includes a mix of park, prairie, and wooded holes and is the perfect fit for disc golfers of every skill level. Brookwood Park has several mature trees, open space and has an underdeveloped area to the east along the river, populated with walking trails. There is a non-motorized boat ramp and fishing opportunities galore.

THREE RIVERS PARK

1000 Adams Parkway

Features a double boat ramp and a boat dock. It is adjacent to Waverly Utilities Duck Pond area. The Duck Pond is popular for hiking and fishing.

MEMORIAL PARK

403 5th Ave. SW

A visit to Memorial Park will fill you with all the sensations of summer. The sounds of splashing water, children laughing, and baseballs smacking. Home of our beloved Kid's Kingdom park, sand volleyball courts, skate park, ball diamonds, picnic shelters, and outdoor swimming pool. Memorial Park is where friends and families gather to enjoy the classic park experience.

SOUTH RIVERSIDE PARK

701 1st St. SW

South of the Bremer Avenue Bridge is South Riverside Park. This 5-block stretch features scenic river views and a winding paved trail. South Riverside is a popular fishing location with lower riverbank access. The park also features play equipment and is the home of Waverly's Farmers Market, which is located in the newly constructed open air shelter at the North end of the park.

KOHLMANN PARK

101 1st St. NW

Situated in the heart of Waverly along the banks of the Cedar River, you will find one of our most scenic places to play; Kohlmann Park. It connects the bike trail north and the downtown loop. A unique feature of the park is the Amphitheater which hosts summer band concerts, weddings, and other events such as the annual Art Walk and Oktoberfest celebration. The park also features river access, well shaded seating, public restrooms and play equipment for patrons to enjoy.

Shades of Rhythm Amphitheater

The Shades of Rhythm Amphitheater, an award-winning design project by two Iowa State University architecture students, is the location of many community events. The elegant design transforms the structure into a piece of public art and offers a special gathering space for all to enjoy in the heart of our community. The Amphitheater has become an iconic landmark in Waverly.

PRAIRIE PARK

North of Tumbleweed Tr. NE

This is one of the newer parks in Waverly and features a pickleball court along with a basketball court, a play unit and swings. This beautiful park not only has natural prairie, but also many young trees and open space. Prairie Park is accessible by a grassway from the East at Wild Rose Lane or West at Thistle Lane.

OUTDOOR RECREATION

CEDAR RIVER PARK

602 Cedar River Pkwy
www.cedarriverpark.com

Cedar River Park is an eight-field complex with an inclusive field and playground. The park provides the opportunity for youth of all abilities to play baseball and softball in Waverly. The Miracle League field provides children with physical and mental disabilities an opportunity to play ball with their peers and experience America's favorite pastime. The park also has amenities including accessible concessions and bathrooms, a bike path connecting to the trails system, and a playground structure. www.cedarriverpark.com

INGAWANIS WOODLAND TRAILS

Spin your wheels and find some adventure. The Ingawanis Woodland Trails area has a lot to offer the mountain bike enthusiasts in the area. The 7.1 miles of trails include some easy flat trails, along with some rocky, rooty short steep climbs. Without going too far, these trails are worth making the short drive. Off road trail runners and hikers are also welcome on these soft trails.

CRAWDADDY OUTDOORS

207 E. Bremer Ave.
 319-352-9129
www.crawdaddyoutdoors.com

Located in downtown Waverly, CrawDaddy Outdoors offers outdoor equipment rentals and adventure packages for a variety of recreational activities throughout the year.

PETSAFE® OFF-LEASH DOG PARK

1403 8th St. SE
www.waverlyia.com/leisureservices

This 5-acre area is located on 8th Street SE, just South of the soccer complex. The park is a wonderful place for dogs of all sizes to stretch out and run. There are separately fenced large and small dog areas and paved walking paths throughout with covered seating areas along the path.

WAVERLY OUTDOOR POOL

510 5th Ave. SW, Waverly
 319-352-6249
www.waverlyia.com/leisureservices/pool

The outdoor pool, located in Memorial Park, is open during the summer months and features water slides, diving boards, lap swim lanes and a gated children's pool with toddler size slide and zero-depth entry. It attracts families and individuals of all ages and is also home to aquatic events such as swim meets and pool parties. Staffed with trained lifeguards at all times, it is a family friendly amenity enjoyed by many.

WAVERLY-SHELL ROCK SOCCER COMPLEX

Waverly-Shell Rock Soccer Association
 202 Cedar River Parkway

The W-SR Soccer Complex includes 15 fields, including a lighted premier field. It has permanent restrooms, concessions and ample parking.

WAVERLY RAIL TRAIL

The Waverly Rail Trail is one of Northeast Iowa's finest scenic bike trails. The 10-foot-wide asphalt trail begins in the city center and traverses east-southeast. Sidewalks connect to the trail providing paved access to nearly every park in Waverly. The Waverly Rail Trail is an essential segment of the Rolling Prairie Trail system. The 7-mile trail features several amenities including 8 bridges, 3 underpasses, and abundant flora and fauna typical of Iowa's four seasons. Trail users will find parking and a picnic shelter at the trailhead. Benches at various stops along the trail offer a brief rest and beautiful views. Modern restroom facilities are available at the nearby Kwik Star in downtown Waverly and primitive restroom facilities are located at the 2- and 6-mile markers. Several restaurants and shops in downtown Waverly are conveniently close. The trail is a popular family and pet friendly amenity. Walkers, joggers, and bikers alike utilize the trail for outdoor recreation and leisurely enjoyment. *see map on page 42

THE COOLEST SPOT TO STAY & PLAY

Paws Amore




1901 E BREMER AVE • WAVERLY • 319.352.1480
WELOVEYOURPAWS.COM

Find us on Facebook




SPAW AMORE' & BOUTIQUE

The Cedar Valley's boutique for your fur babies. Pamper your dog's with a spa day or a new toy.

103 E. BREMER AVE., WAVERLY, IA

CALENDAR OF EVENTS

Throughout the year, Waverly and surrounding communities plan a variety of events for people of all ages to enjoy. Visit our online calendar of events for more info at waverlychamber.com. [Welcome to Waverly!](#)

FEBRUARY

CANDLELIGHT SKI

Waverly Rail Trail
www.waverlyia.com

Enjoy a candlelit ski on the Waverly Rail Trail during the Annual Candlelight Ski event which takes place the 1st Saturday in February. 1.1 miles of the trail are illuminated for skiing and walking with over 400 luminaries, beginning at the trailhead located behind Kwik Star East, 400 E. Bremer Avenue. Complimentary Nestle hot cocoa is provided at the bonfire turn around. Snow shoes and cross country skis are available for rent at CrawDaddy Outdoors.

MARCH

SPRING MIDWEST HORSE SALE

Waverly Sales Barn
2212 5th Ave. NW, Waverly
www.waverlysales.com

One of the oldest and largest semi-annual horse sale auctions in North America, held the last week in March.

MAY

ART WALK

Kohlmann Park
101 1st St. NW, Waverly
www.waverlychamber.com

Art Walk is Waverly's annual juried fine arts and crafts show. It is held the first Saturday in May at Kohlmann Park along the beautiful Cedar River in downtown Waverly. Artists from the tri-state area come to Kohlmann Park to sell their works of media ranging from:

basketry, jewelry, pottery, photography, painting, and much more. There is also live music, food vendors, kids art activities and much more! Open to the public and people of all ages are invited to enjoy the day surrounded by artistic creations!

SPRING RETAIL EVENT

Waverly Merchants
www.waverlychamber.com

The First Saturday in May, Waverly merchants host a Spring Shopping Event in conjunction with the Waverly Art Walk, featuring new spring merchandise and fun! Shop your way around town and enjoy spring savings, sweet treats, art and more!

WAVERLY CAR CRUISE

Waverly, Iowa
Uncover your classic, sports or muscle car and cruise the strip in Waverly! The fun kicks off at 6:00 p.m. on the 4th Thursday during summer months.

WARTBURG & W-SR GRADUATIONS

Wartburg College
& **W-SR High School, Waverly**
Graduation ceremonies are held Memorial Day weekend.

FARMERS MARKET

South Riverside Park
202 1st Ave. SE, Waverly
Every Saturday, May - Oct 8:30-11:30
Every Tuesday starting in June 3-5:30
Offering locally-grown produce, crafts, pottery, baked goods, plants and more.

JUNE

CONCERTS IN KOHLMANN

Kohlmann Park
101 1st St. NW, Waverly
www.waverlychamber.com

Waverly's summer concert series, which features the Greater Waverly Municipal Band along with other local entertainment, takes place in June & July. Entertainment begins each Thursday evening at 6:30 p.m. in Kohlmann Park. Free popcorn & lemonade is available for all to enjoy along with food from a variety of vendors throughout the season.

WAVERLY CAR CRUISE

Waverly, Iowa
Uncover your classic, sports or muscle car and cruise the strip in Waverly! The fun kicks off at 6:00 p.m. on the 4th Thursday during summer months. Join your friends for cruising, dining, shopping and socializing as Bremer Ave.

WAVERLY CITY WIDE GARAGE SALES

Waverly, Iowa
Second weekend in June.

GRUMP DAYS

Readlyn, Iowa
www.readlyn.com
Readlyn's annual town event held the third weekend in June.

FARMERS MARKET

South Riverside Park
202 1st Ave. SE, Waverly
Every Saturday, May - Oct 8:30-11:30
Every Tuesday starting in June 3-5:30
Offering locally-grown produce, crafts, pottery, baked goods, plants and more.

JULY

CONCERTS IN KOHLMANN

Kohlmann Park
101 1st St. NW, Waverly
www.waverlychamber.com

Waverly's summer concert series, which features the Greater Waverly Municipal Band along with other local entertainment, takes place in June & July. Entertainment begins each Thursday evening at 6:30 p.m. in Kohlmann Park. Free popcorn & lemonade is available for all to enjoy along with food from a variety of vendors throughout the season.

FOURTH OF JULY

Frederika, Iowa
First week in July.

SHELL ROCK FOURTH OF JULY CELEBRATION

Downtown Shell Rock, Iowa
www.shellrockiowa.org

Shell Rock is known for its annual Fourth of July Celebration, which includes a parade and a spectacular fireworks display.

FARMERS MARKET

South Riverside Park
202 1st Ave. SE, Waverly
Every Saturday, May - Oct 8:30-11:30
Every Tuesday starting in June 3-5:30
Offering locally-grown produce, crafts, pottery, baked goods, plants and more.

RIDICULOUS DAYS

Waverly Merchants
www.waverlychamber.com

Shop ridiculously low prices on quality products from both local merchants and sidewalk vendors, during Waverly's annual Ridiculous Days! Mark your calendars and join the shopping fun on the second Saturday in July for this exciting event. The ridiculousness begins bright and early at 7:00 a.m.

PLAINFIELD DAYS

Plainfield, Iowa
www.facebook.com/Plainfield-Days
The annual celebration in Plainfield held the second weekend in July.

SUMNER DAYS

Sumner, Iowa
www.mysumneriowa.com
Annual Sumner Days celebration held the third weekend in July.

WAVERLY CAR CRUISE

Waverly, Iowa
Uncover your classic, sports or muscle car and cruise the strip in Waverly! The fun kicks off at 6:00 p.m. on the 4th Thursday during summer months.

HERITAGE DAYS

Bremer County Fairgrounds
717 5th Ave. SW, Waverly
www.waverlyheritagedays.com
Waverly Heritage Days is Waverly's town celebration. Lasting for three days during the third weekend in July, the festival kicks off Friday and continues on through the weekend. On Saturday morning, thousands enjoy the parade starting on Fifth Avenue NW and ending at the Fairgrounds. The entertainment continues at the Fairgrounds with activities for kids and families followed by a live band and fireworks.

JANESVILLE DAYS

Janesville, Iowa
www.janesvilledays.org
Annual Janesville Days celebration is held the end of July.

AUGUST

BREMER COUNTY FAIR

Bremer County Fairgrounds
717 5th Ave. SW, Waverly
www.bremercountyfair.com
A Blue Ribbon Fair since 1875, the Bremer County Fair celebrates the best in local livestock and crafts. Also, don't miss the annual truck and tractor pulls, commercial and local exhibits, carnival, petting zoo and various contests, performances and concerts. Bremer County Fair is held the first week in August.

MOONLIGHT MOVIE NIGHT

Waverly, Iowa
www.waverlychamber.com
Grab your blankets and chairs and watch a movie under the stars! The movie will begin at dusk in Kohlmann Park. Moonlight Movie Night is FREE to the public and presented by the Waverly Chamber of Commerce and the Waverly Public Library.

FARMERS MARKET

South Riverside Park
202 1st Ave. SE, Waverly
Every Saturday, May - Oct 8:30-11:30
Every Tuesday starting in June 3-5:30
Offering locally-grown produce, crafts, pottery, baked goods, plants and more.

WAVERLY CAR CRUISE

Waverly, Iowa
Uncover your classic, sports or muscle car and cruise the strip in Waverly! The fun kicks off at 6:00 p.m. on the 4th Thursday during summer months.

TRIPOLI DAYS

Tripoli, Iowa
www.facebook.com/Tripoli-Days
Annual Tripoli Days is held the first weekend in August.

BREAK-AWAY DAYS

Denver, Iowa
www.facebook.com/Denver-Break-Away-Days
Annual Denver Break-Away Days is held the third weekend in August.

SEPTEMBER

FALL RETAIL EVENT

Waverly Merchants
www.waverlychamber.com
Shop fall retail open houses during Waverly's annual Fall Fest! Rake in the savings and see all the special items retailers have to offer for the upcoming fall season. This is a great chance for retailers to showcase fall merchandise and attract shoppers to their store with special discounts and savings.

FARMERS MARKET

South Riverside Park
202 1st Ave. SE, Waverly
Every Saturday, May - Oct 8:30-11:30
Every Tuesday starting in June 3-5:30
Offering locally-grown produce, crafts, pottery, baked goods, plants and more.

WAVERLY CAR CRUISE

Waverly, Iowa
Uncover your classic, sports or muscle car and cruise the strip in Waverly! The fun kicks off at 6:00 p.m. on the 4th Thursday during summer months.

OCTOBER

OKTOBERFEST

Waverly, Iowa
www.waverlyoktoberfest.com
Family friendly event that features live music, food and beverage gardens & a family fun zone.

FALL MIDWEST HORSE SALE

Waverly Sales Barn
2212 5th Ave. NW, Waverly
www.waverlysales.com
One of the oldest and largest semi-annual horse sale auctions in North America, held the first week in October.

FARMERS MARKET

South Riverside Park
202 1st Ave. SE, Waverly
Every Saturday, May - Oct 8:30-11:30
Every Tuesday starting in June 3-5:30
Offering locally-grown produce, crafts, pottery, baked goods, plants and more.

JACK-O-LANTERN NIGHT

Downtown Waverly
www.waverlychamber.com
This event is for all the little ghosts and goblins to join the fun and fill their bags with treats provided by participating downtown merchants during Waverly's annual Jack-O-Lantern Night! Held the Thursday before Halloween.

NOVEMBER

HOLIDAY RETAIL EVENT

Waverly Merchants
www.waverlychamber.com
Kick off your holiday shopping in Waverly during Holiday Open House Event that happens the 2nd weekend in November! Stores will be decked out and stocked to the brim with all the seasons best gifts! Enjoy specials, prizes, samples and more at participating Waverly businesses! Holiday shopping doesn't get much better than this!

CANDLELIGHT WALK

Waverly Rail Trail
www.waverlyia.com
Enjoy a peaceful stroll on the Waverly Rail Trail illuminated by over 400 luminaries with LED candles the 2nd Saturday in November. Walk about 1.2 miles to the Bonfire turnaround and enjoy a cup of Nestle Hot Cocoa and some other delicious treats before walking back to the start. The Candlelight Walk takes place on the Waverly Rail Trail, beginning at the trailhead located behind Kwik Star East, 400 E. Bremer Avenue.

DECEMBER

SANTA'S ARRIVAL

Kohlmann Park
www.waverlychamber.com
Welcome Santa to Waverly at his house in Kohlmann Park the first Saturday in December! Bring your wish list and a camera to capture priceless memories with the Jolly Ol' Fella himself! You can also mail a letter to Santa by dropping it in his mailbox at Kohlmann Park. Be sure to include your full name and return address to ensure that Santa can reply!

CHRISTMAS WITH WARTBURG

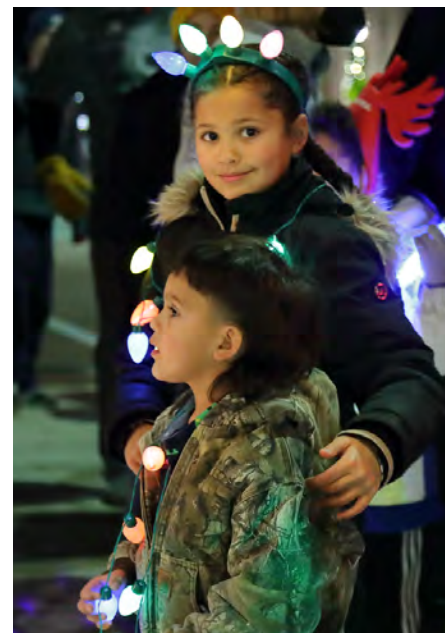
100 Wartburg Blvd., Waverly
www.wartburg.edu/christmas
Christmas with Wartburg is a traditional celebration, as a college of the Evangelical Lutheran Church in America, to proclaim the Good News of Christ's birth in word and song.

DENVER'S OLD-FASHIONED CHRISTMAS

Denver, Iowa
www.cityofdenveriowa.com
Annual Denver Christmas celebration features different events and Festival of Trees.

CHRISTMAS GREETINGS ON MAIN

Downtown Waverly
www.waverlychamber.com
Hosted by the Waverly Chamber of Commerce and Waverly Merchants, Christmas Greetings on Main features decorated store fronts along historic Bremer Avenue that come alive with Christmas scenes throughout the evening. Be sure to see Santa listening to children's requests at his home in Kohlmann Park. Warm up with a cup of Nestle's hot cocoa at several "Hot Spots" located throughout downtown. Live ice sculpture carvings, a festival of trees and free horse drawn trolley rides are just some of the many highlights of this annual celebration held the second Thursday in December.



For a complete listing of events, visit us online at www.waverlychamber.com

WHERE TO SHOP



SHOP LOCAL, SHOP WAVERLY!

W Denotes Waverly Chamber of Commerce Members

2 GUYS INTERIOR FOCUS **W**

1200 10th Ave. SW
319-352-5652
www.2guysinteriorfocus.com

B&J FLOORING

112 W. Bremer Ave. Suite D
319-352-2457
www.bandjflooring.com

BLUSH LEDET SALON SPA & BOUTIQUE

205 20th St. NW
319-483-5267

BO STUDIO. 121 **W**

121 E. Bremer Ave.
319-352-3211
www.bostudio121.com

CASEY'S GENERAL STORE **W**

1312 W. Bremer Ave.
319-352-4613
1032 4th St. SW
319-352-1052
www.caseys.com

CRAWDADDY **W** OUTDOORS

207 E. Bremer Ave.
319-352-9129
www.crawdaddyoutdoors.com

DESIGN 360 AT DECORATING DEN INTERIORS **W**

221 E. Bremer Ave.
319-352-1379
www.decoratingden.com

DOLLAR TREE

2121 4th St. SW
319-352-8849
www.dollartree.com

ECKER'S FLOWERS & GREENHOUSE

410 5th St. NW
319-352-1910
www.eckersflowers.com

ESSENCE AESTHETICS & HEALTH **W**

99 E. Bremer Ave.
319-239-9194
www.essence.health

FAREWAY STORES, INC **W**

222 W. Bremer Ave.
319-352-4319
www.farewaystores.com

FIBERWORKS NEEDLEWORK

108 E. Bremer Ave.
319-352-5464

FLOURISH BEAUTY CO.

207 West Bremer Ave.
319-559-2288

GOLDEN THISTLE **W**

114 E. Bremer Ave.
319-239-2648

GOODWILL INDUSTRIES **W**

400 Technology Place
319-234-4626
www.visitgoodwill.com

GREENLEAF TOBACCO & VAPE

2121 4th St SW #B
319-352-8812

HY-VEE FOOD STORES **W**

1311 4th St. SW
319-352-1365
www.hy-vee.com

KWIK STAR **W**

400 E. Bremer Ave.
319-352-2155
500 W. Bremer Ave.
319-352-1176
2501 4th St. SW
319-352-1218
www.kwiktrip.com

LAVISH

98 E. Bremer Ave.
319-830-5318

Shop Local!

LIQUOR & TOBACCO OUTLET

622 W. Bremer Ave.
319-352-9455

LOVE & LACE 

220 E. Bremer Ave.
319-352-0243
www.loveandlace.net

MEYER PHARMACY 

110 10th St. SW
319-352-3120
www.meyerpharmacy.com

MILLER TRUE VALUE 

1201 4th St. SW
319-352-1386
www.truevalue.com/waverly

MOE & ARROW BOUTIQUE 

1810 4th St. SW
319-559-2663
www.moeandarrowboutique.com

NEIGHBORHOOD HOME

1305 W. Bremer Ave.
319-352-4888
www.theneighborhoodhome.com

NEXT GENERATION WIRELESS 

1810 4th St. SW
319-352-6200
www.ngwtoday.com

NEWY'S MOTO 

205 East Bremer Ave.
319-464-6399
www.newysmoto.com

NORBY'S FARM & FLEET 

1901 4th St. SW
319-352-3882

PINK DAISY BOUTIQUE

97 E. Bremer Ave.
319-559-0096

THE PRINTERY & 

NORTHWOOD PAPER & SUPPLY CO.

215 W. Bremer Ave.
319-352-5822
www.printery.net

RACK 'EM UP PROMOTIONS 

107 E. Bremer Ave.
319-352-9475
www.rackemuppromotions.com

ROOT 

100 E. Bremer Ave.
319-290-5746
www.rootpretty.com

SALON 352

91 East Bremer Ave.
319-352-5600

SPAHN & ROSE LUMBER CO. 

311 16th Ave SW
319-352-3276
www.spahnandrose.com

SPAW AMORE & BOUTIQUE

103 E. Bremer Ave.

TENENBAUM'S JEWELRY 

219 E. Bremer Ave.
319-352-4112
www.tenenbaumsjewelry.com

THE JUNKERY 

98 East Bremer Ave.
319-415-7327

THE MIXING BOWL

214 E. Bremer Ave.
319-830-3562
www.mixingbowlwaverly.com

THOMPSON SHOES 

113 E. Bremer Ave.
319-352-1079
www.tshoesonline.com

TIEDT NURSERY 

2419 E. Bremer Ave.
319-352-0418
www.tiedtnurseryandlandscape.com

T-MOBILE USA 

1810 4th St. SW
319-419-6293
www.t-mobile.com

TREASURED QUILTING & GIFTS

115 W. Bremer Ave.
319-352-4355

TRINKETS & TOGS 

114 10th St. SW
319-352-8029
www.larrabeecenter.org

VERIZON WIRELESS/ 

BE MOBILE
2401 4th St. SW
319-483-6828
www.bemobile.com

WALGREENS

320 W. Bremer Ave.
319-596-1085
www.walgreens.com

WAL-MART 

2700 4th St. SW
319-352-5260
www.walmart.com

WASH HOUSE SALON & SPA

409 W. Bremer Ave. 
319-352-4140

WAVERLY HEALTH CENTER

GIFT GARDEN 
312 9th St. SW
319-352-4120
www.waverlyhealthcenter.org

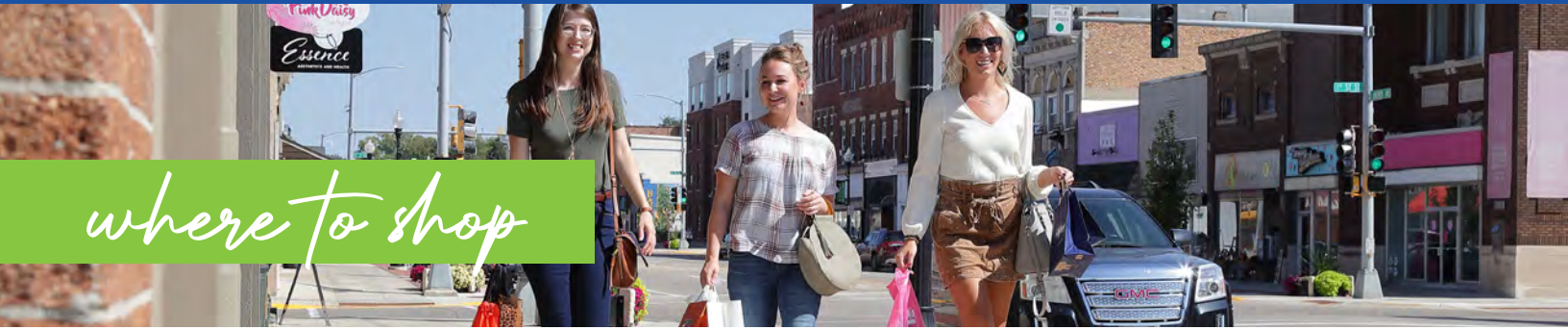
WAVERLY MARKET 

123 E. Bremer Ave.
319-559-8650

WILD CARROT 

215 E. Bremer Ave.
319-352-2215

Shop Waverly!



where to shop

Trinkets & Togs Thrift Stores
 COLLEGETOWNE PLAZA
 114 10TH ST SW WAVERLY | (319) 352-8029

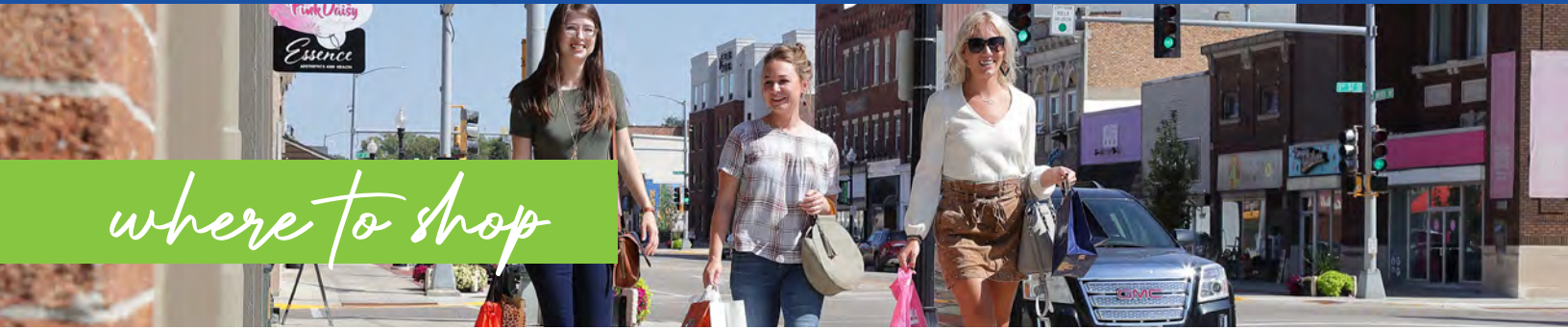
Shop Waverly!

Neighborhood HOME
 Eastern Iowa's **LOWEST PRICES**
 on Furniture & Mattresses!
 Shop our selection in store
 or online here:
NeighborhoodHome.com
 Find us on Facebook!

TENENBAUM'S JEWELRY
 219 East Bremer Ave. Waverly, IA
 319-352-4112
 contactus@tenenbaumsjewelry.com
 WWW.TENENBAUMSJEWELRY.COM

Our Locations:
 1305 West Bremer Ave WAVERLY 319.352.4888
 3552 LaFayette Road EVANSDALE 319.235.9621
 307 Highway 150 North WEST UNION 563.412.1113

Wild Carrot
 SOUPS • SANDWICHES SWEETS • SHOPPING
 215 E BREMER AVE, WAVERLY | 319-352-2215
 TUESDAY - SATURDAY: 8AM - 4PM
SHOP & EAT
 OPEN FOR BREAKFAST & LUNCH
TOP PLACE TO VISIT IN IOWA!



where to shop



Women's Clothing
Jewelry & Accessories
Fresh & Silk Floral Arrangements
Home Decor
Giftware
Inspirational Gifts
Men's Formal Wear
Wedding Flowers

love & lace 

220 EAST BREMER AVE, WAVERLY 319.352.0243



B&J
FLOORING

20 years experience

Joel & Julie Pietig

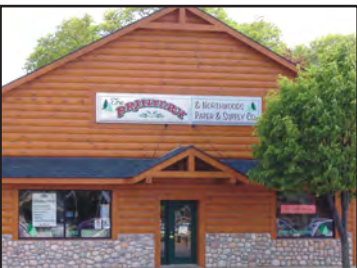
112 W Bremer Ave, Suite D, Waverly
319.352.2457 or 319.231.3128
bandjflooringwaverly@gmail.com

Mon-Thurs 10-4 & Friday 10-3
Appointments after hours



215 West Bremer Ave. • Waverly
julie@printery.net • www.printery.net

- Full Service Printing
- High Quality Copies
- Color Copies
- Print Outs from Files
- Graphic Design
- Blank Paper & Env.
- FAX Service
- Rubber Stamps
- Laminating
- Banners
- Office Supplies
- Greeting Cards
- Notepads
- Custom Wedding Invitations & Programs



319.352.5822
Fast, Friendly
Service & Quality
Printing!



all your favorites
ALL IN ONE PLACE

- FRESH PRODUCE • USDA CHOICE MEAT & SEAFOOD
- ONLINE SHOPPING • BEER, WINE & SPIRITS
- HEALTH & PERSONAL CARE • GIFT CARDS
- PARTY TRAYS • BAKERY • AND MUCH MORE!

SHOP.FAREWAY.COM

FULL SERVICE GROCERY STORE

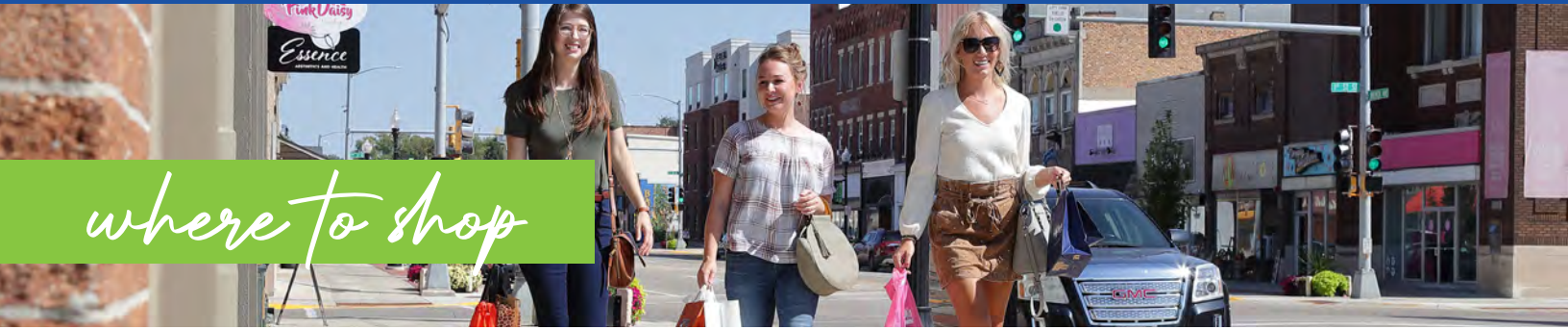
FAREWAY[®]

MEAT & GROCERY

222 W BREMER AVE, WAVERLY

319-352-4319 - GROCERY

319-352-4551 - MEAT DEPT.



where to shop

Find us on Facebook


TIEDT
NURSERY
RETAIL NURSERY & GIFT SHOP

We have everything you need to create a **beautiful landscape**
Trees • Shrubs • Perennials • Annuals • Mulch • Flagstone • Rock • Edging


HWY 3 EAST, 2419 EAST BREMER AVE, WAVERLY
319-352-0418 | MON-FRI 8:30AM - 5PM, SAT 9AM - 4PM

Miller True Value & Just Ask Rentals

1201 4TH STREET SW, WAVERLY, IA 50677
319-352-1386
WWW.TRUEVALUE.COM/WAVERLY



Mon-Fri 7:30-6
Saturday: 7:30-5
Sunday: Noon-4



SUPER HOT DEALS ARE JUST A TAP AWAY



1311 4TH ST. SW, WAVERLY
(319) 352-1365
SHOP ONLINE AT
WWW.HY-VEE.COM

HyVee
EMPLOYEE OWNED

Thompson SHOES

113 East Bremer Ave, Waverly
319-352-1079

"Shoes for the entire family."

www.tshoesonline.com

WHERE TO DINE & DRINK



RESTAURANTS, DINERS & PUBS

W Denotes Waverly Chamber of Commerce Members

4 QUEENS DAIRY CREAM **W**

109 1st St. SW
319-559-2476
www.4queensdairycream.com

APPLEBEE'S GRILL **W**

2500 4th St. SW
319-352-9240
www.applebees.com

ASIAN GARDEN

116 E. Bremer Ave.
319-352-5253

BEACH HOUSE BAR & GRILL

110 E. Bremer Ave.
319-483-9095

BREMER BREWING CO. **W**

102 W. Bremer Ave.
319-352-9844
www.bremerbrewingcompany.com

BURGER KING

927 4th St. SW
319-352-3311
www.bk.com

DAIRY QUEEN **W**

122 4th St. SW
319-352-3256
www.dairyqueen.com

THE DEN **W**

Inside Saemann Student Center
100 Wartburg Blvd.
319-352-8303
www.wartburg.edu/dining

DOMINOS PIZZA **W**

501 W. Bremer Ave.
319-483-9444
www.dominos.com

EAST CHINA

309 W. Bremer Ave.
319-483-9999

EL SOL MEXICAN RESTAURANT

3401 E. Bremer Ave.
319-352-1590

FREDRICK'S SIPS N EATS

117 East Bremer Ave.
319-352-2455

GET ROASTED COFFEE COMPANY **W**

106 W. Bremer Ave.
319-252-2236

HAVEN COFFEE AT THE FOX

1900 Heritage Way
319-559-2369

HY-VEE KITCHEN **W**

1311 4th St. SW
319-352-1365
www.hy-vee.com

IGNITE NUTRITION

106 10th St. SW
319-559-2290

JIMMY JOHNS **W**

620 W. Bremer Ave.
319-352-2100
www.jimmyjohns.com

JOE'S KNIGHT HAWK RESTAURANT

1002 W. Bremer Ave.
319-352-2862
www.joesknighthawk.com

KONDI TOREI **W**

Inside Vogel Library
100 Wartburg Blvd.
319-352-8505
www.wartburg.edu/dining

MCDONALD'S **W**

1203 4th St. SW
319-352-6977
www.mcdonalds.com

OTHER PLACE II **W**

821 W. Bremer Ave.
319-352-4742
www.theotherplace.com

PIZZA RANCH

2020 W. Bremer Ave.
319-352-2222
www.pizzaranch.com

Dine Local!

POKEY'S WHISKEY HOUSE
108 2nd St. NE

PRAIRIE PATIO & GRILL **W**
19 Eagle Ridge
319-352-0444

RED FOX BBQ & PIZZERIA
1900 Heritage Way
319-242-4598

SASQUATCH JACKS **W**
HIDEAWAY BARROOM & GRILL
118 10th St. SW
319-559-2444
www.sasquatchjacks.com

SCOOTER'S COFFEE
210 W. Bremer Ave.
319-483-0071

SUB CITY
311 E. Bremer Ave.
319-352-1044

SUBWAY
2451 4th St SW
319-352-9014
www.subway.com

TACO BELL
*Opening 2023-2024

TACO JOHNS
617 W. Bremer Ave.
319-352-5055
www.tacojohns.com

TAPATIO MEXICAN RESTAURANT
1810 4th St. SW
319-352-1292

THE DIRTY DOG AMERICAN BAR & GRILL
1016 W. Bremer Ave.
319-352-8819
www.dirtydogwaverly.com

THE MIXING BOWL
214 E. Bremer Ave.
319-830-3562

THE POUR HOUSE
111 E. Bremer Ave.
319-352-2000

THINKWELL COFFEE
123 W. Bremer Ave.
319-352-2458

WAVERLY AREA VETERAN'S POST **W**
1300 4th St. NW
319-483-9287
www.waverlyvets.us

WAVERLY SALES COMPANY **W**
2212 5th Ave. NW
319-352-2804
www.waverlysales.com

WILD CARROT **W**
215 E. Bremer Ave.
319-352-2215

WOODEN FOOT SALOON **W**
98 E. Bremer Ave.
319-352-9878
www.thewoodenfootsaloon.com

Z'S PIZZA & DINER **W**
211 W Bremer Ave.
319-559-2999

ZESTY ORANGE **W**
Inside The W
100 Wartburg Blvd.

Dine Waverly!



where to dine & drink



MEXICAN RESTAURANT

3401 E Bremer Ave, Waverly
(319) 352-1590
elsolwaverly.com

**AUTHENTIC FOOD
NEW MENU ITEMS!
FRESH MARGARITAS
PATIO SEATING**

4 QUEENS DAIRY CREAM

109 1ST ST. SW, WAVERLY • 319-559-2476
1310 W 1ST ST, CEDAR FALLS &
207 E TOWER PARK DR, WATERLOO
4QUEENSDAIRYCREAM.COM

THE ULTIMATE MOOD FOOD

Brighten any day with the best frozen treats in the Cedar Valley.

the **mixing bowl**
BAKERY

Home-baked favorites made from scratch
Cinnamon Rolls, Breads, Cookies & more!

214 East Bremer Ave, Waverly • 319-830-3562

Serving the Waverly Area for Over 45 Years.

Mouth watering pizzas, burgers, tenderloins, wings or any of the great selections on our menu!

821 WEST BREMER AVE, WAVERLY, IA
(319) 352-4742
www.theotherplace.com

MAKE TODAY A TREAT DAY

WAVERLY DAIRY QUEEN

122 4th St. SW, Waverly • 319-352-3256
Hours: Mon.-Fri. 10:30-10:30 & Sat.-Sun. 11-10:30

Pizza Ranch

ORDER ONLINE

2020 W BREMER AVE, WAVERLY, IA
(319) 352-2222 | PIZZARANCH.COM

Buffet Hours:
M-F 11-2 & 4:30-8
Sat-Sun 11-8

Delivery
Order Online

EVENT & MEETING SPACES



COBBLESTONE INN W
 208 E. Bremer Ave.
 319-352-1311
www.staycobblestone.com

THE HIDDEN ACRE
 1406 250th St.
 319-559-2280
www.thehiddenacre.com

WAVERLY CIVIC CENTER
 200 1st St. NE W
 319-352-6263
www.waverlyia.com

WARTBURG COLLEGE W
 100 Wartburg Blvd.
 319-352-8286
www.wartburg.edu/studentcenter

THE CENTRE HALL W
 1201 4th St. SW
 319-352-1386
www.thecentrehall.com

PRAIRIE LINKS W
EVENT CENTER
 19 Eagle Ridge Dr.
 319-242-7675
www.pairielinkseventcenter.com

WAVERLY PUBLIC
LIBRARY W
 1500 W. Bremer Ave.
 319-352-1223
www.waverlyia.com/library

WAVERLY AREA
VETERANS POST W
 1300 4th St. NW
 319-483-9287
www.waverlyvets.us

TENDRILS ROOFTOP W
GARDENS
 312 9th St. SW
 319-352-4120
www.waverlyhealthcenter.org

RED FOX
 1900 Heritage Way
 (319) 559-2369
www.redfoxwaverly.com

Meet in Waverly!



**BIG CITY QUALITY,
 SMALL TOWN VALUES**


SAVE 15% on overnight accommodations by calling the hotel directly and asking for the rate code: SAVE
 (Offer good through June 2025)




208 EAST BREMER AVENUE, WAVERLY, IA | (319) 352-1311
WWW.STAYCOBBLESTONE.COM

WHERE TO STAY

COBBLESTONE INN & SUITES

208 E. Bremer Ave., Waverly 
319-352-1311
www.staycobblestone.com

QUALITY INN & SUITES

404 29th Ave. SW, Waverly 
319-352-0399
www.choicehotels.com

SUPER 8 BY WYNDHAM

301 13th Ave. SW, Waverly
319-352-0888
www.super8.com/waverly

NEW DAY DAIRY GUEST BARN

31000 175th St., Clarksville 
319-278-4455
www.newdaydairy.com

RED FOX HOTEL

1900 Heritage Way, Waverly
319-559-2369
www.redfoxwaverly.com

THE PALS' OLD MILL BED AND BATH


103 North Cherry St. Shell Rock
515-491-4016



new Day Dairy  **Guest Barn**
located in North Iowa
New Adventures. Authentic Cows. Comfy Beds.

#sleepwiththecows
24/7 cow gazing on a modern dairy farm
Exclusive Vacation Rental

book at newdaydairy.com  



**The Pals' Old Mill
Bed & Bath**

103 N Cherry St, Shell Rock, IA
Call today! (515) 491-4016

Historic grain mill on picturesque
Shell Rock River.
Rent 1st OR 2nd floor OR
2nd + 3rd floors for your
overflow guests or next vacation.
palsoldmillsr@gmail.com

 Find us on Facebook **PalsOldMillsR**

As your local newspaper, we report on the news and events affecting your life and the world around you. Doing our part to keep the community connected and the public informed is ingrained in our mission, and your support is essential to this work. We invite you to subscribe today and start making every day an opportunity to be engaged, aware and a partner in our community.

Waverly Newspapers

Local & Trusted | In Print & Online
319.352.3334 | www.waverlynnews.com



Wake Up to the Importance
of Your Local Newspaper



CAMPGROUNDS

Campgrounds are open May 1 through October 31. The park gate is closed to vehicle traffic after October 31, but remains open to foot traffic. Hunting is allowed from November 1 to January 10 at Cedar Bend, North Cedar and North Woods Parks. The parks can also be used by cross-country skiers, snowshoers, birders, etc. during the winter months. Each park has electric and tent camping sites, depending on user preference. There are no designated sites and campsites are available on a first-come, first-serve basis. Reservations are not taken and the sites feature self-registration at the park kiosk. Sites contain 20 to 30 amp outlets.

For a complete listing of Bremer County camping facilities visit www.co.bremer.ia.us.

Camping is available at four county parks:

CEDAR BEND PARK

1267 250th St., Waverly

Cedar Bend Park offers a variety of recreational opportunities that include four miles of trails that wind through forests, fields and along the river's edge. Three picnic and playground areas provide day-use recreation. There are three sand volleyball courts and horseshoe pits at the park, as well as two shelters with electricity.

ALCOCK PARK

1171 Midway Ave., Frederika

Canoers and fishing enthusiasts obtain access to the Wapsipinicon River through the park's shoreline or the boat ramp. The campground has over fifty electrical sites and two wells for drinking water.

NORTH CEDAR PARK

1163 140th St., Plainfield

North Cedar Wildlife Area (98 acres) joins North Cedar Park on the west side. The area includes timber and old river oxbows. It is open to hunting, fishing, hiking and other outdoor activities.

NORTH WOODS PARK

1249 Yuma Ave., Sumner

Fishing is available at the two ponds in the Wilson Grove Wildlife Area; a short walk from the campground.

your
HOMETOWN BANK

As a community bank, we know when we do our part, we can make our community better for everyone.

FIDELITY
BANK & TRUST

We're proud to be
YOUR HOMETOWN BANK!

www.bankfidelity.bank | 800.403.8333

MEMBER
FDIC

where to worship

Peace United Church of Christ



Church Services
9:30 AM every Sunday

Sunday School
8:30 AM
September - May

Pastor Craig Hancock
(319)361-3539

1800 11th St. SE, Waverly • 319-352-3151

ST. MARY CATHOLIC CHURCH

Masses: Sat. 5:15pm, Sun. 8am & 10am.



2700 Horton Rd, Waverly
319-352-2493 www.StMarysFamily.com

St. John Lutheran Church

415 4th ST. SW, WAVERLY | 319-352-2314 | STJOHNWAVERLY.ORG



"Traditional Christ-Centered Worship for the Family"

WORSHIP TIMES

- Divine Service of Holy Eucharist -
Sundays at 9 am & Wednesdays at 1 pm

CHRISTIAN EDUCATION

- Sunday School / Adult Bible Study - Sundays at 10:30 am
- Wartburg Campus Ministry Bible Study - Thursdays at 8 pm
- Friday Bible Study - Fridays at 9 am



SERVICE LIVESTREAM AT
WWW.STJOHNWAVERLY.ORG



FIRST BAPTIST CHURCH
OF WAVERLY

211 3rd St. SW
Waverly, IA
(one block east of Dairy Queen)
319-352-2687



Pastor Dan Eloe
fbcwaverlyia@gmail.com
www.fbcwaverly.com



St. Paul's
LUTHERAN CHURCH & SCHOOL

301 1st St NW, Waverly, IA
319-352-3850
life@stpaulswaverly.org

WORSHIP

Thurs. School Worship 8:35 a.m.
(In-Person)

Sun. Traditional Worship 9 a.m.
(Livestreamed & In-Person)

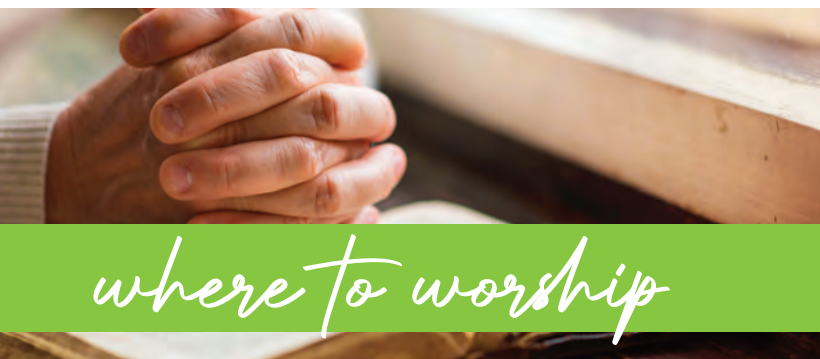
Contemporary Worship 11 a.m.
(In-Person)

EDUCATION

St. Paul's
Lutheran School
preschool-sixth grade

New faith-based
online content
available every week!

STPAULSWAVERLY.ORG/LIVE



where to worship

Faith
Lutheran Church
 Pastor Joel Becker Sunday worship at 9 a.m. ELCA
 422 N. Prairie Street, Shell Rock, Iowa 50670
 319-885-4547
 Email: faithsr@butler-bremer.com
 Website: faithsr11.org
 www.facebook.com/FaithLutheranShellRock

Trinity United Methodist Church

*You are invited to grow
 in your faith
 with our family*

Sunday Worship Services
 8 AM in-person
 10 AM in-person & live-streamed
 Summer Worship Time
 9:30 AM in-person & live-streamed

Trinity United Methodist Church
 1400 W. Bremer Ave Waverly
 (319) 352-2590
 trinitywaverly.org

Helping People Take Their Next Steps Towards Christ!

Here are just a few of the ministries we have for you and your family:

Nursery: Every Sunday 10 am
 Wednesdays 6:30pm during Life Groups

Clubhouse: Every Sunday 10 am
 Wednesdays during Life Groups

Kids Zone: Every Sunday 10 am
 Wednesdays during Life Groups

Kingdom Culture:
 Every Wednesday 6:30pm
 At 911 E. Bremer Ave.

Young Life: 12th grade–College

Adult Life Groups: waverlylife.com

Life+ church

0-2 years old
Nursery

THE KID'S ZONE
 K-5th grade

The Clubhouse (preschool)
 3-5 years old

Kingdom Culture
 6-12th Grade

SUNDAY SERVICE @ 10am
 1013 E. Bremer Ave.
 Waverly, IA 50677
 319-352-2038
 waverlylife.com
 Waverly Life Church

Life Groups

WARTBURG COLLEGE



WARTBURG COLLEGE

Wartburg College is a top-tier national liberal arts college located in the heart of Waverly. As a center for arts and culture, the campus sets the tone for the entire community. Nearly 500 students participate in Wartburg's 18+ internationally acclaimed music



ensembles. Hundreds of concerts and recitals are held throughout the academic year. All are open to the public and most are free. In early December each year, more than 6,000 visitors attend Christmas with Wartburg. The four-concert series includes performances in Waverly and West Des Moines. For details about music and theatre at Wartburg, visit www.wartburg.edu/music.

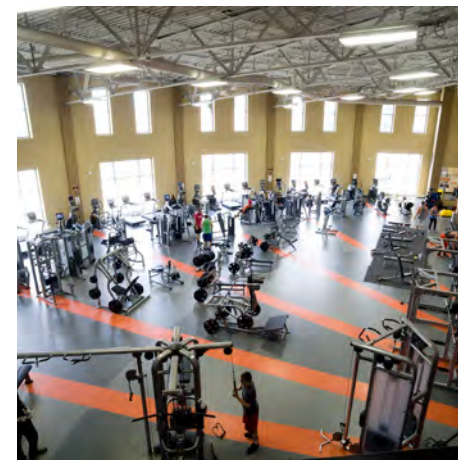
Wartburg has a national reputation for athletic dominance and has consistently been ranked in the top 25 athletic programs in NCAA Division III for 18 of the past 20 years. Wartburg student-athletes have recorded 27 straight years of individual or team national championships, including the 2021 men's track & field outdoor national championship, the women's outdoor steeplechase champion, and two individual wrestling titles at the NWCA national meet. Visit www.go-knights.net to see schedules and learn more.

WARTBURG-WAVERLY SPORTS & WELLNESS CENTER (THE W)

Built in 2008, the Wartburg-Waverly Sports & Wellness Center, located near Walston-Hoover Stadium, houses the college's athletic department, indoor intercollegiate facilities, and health and recreational amenities open to the public. Community memberships are available.

The facility includes:

- The 1,800-person capacity Levick Arena.
- A 200-meter track.
- A 6,500-square-foot fitness center with climbing wall.
- A natatorium with a six-lane, 25-yard pool; recreational swimming with a zero-depth entry area; waterslide; vortex pool; hot tub; and sauna.
- Six multipurpose courts for tennis, basketball, volleyball and more.



DEMOGRAPHICS & SERVICES



DEMOGRAPHICS

GEOGRAPHIC LOCATION

Waverly is located in Northeast Iowa on the banks of the Cedar River approximately 80 miles west of the Mississippi River and 60 miles south of the Iowa/Minnesota border.

FUN FACTS

9 FACTS ALL ABOUT WAVERLY

1. WorldAtlas.com ranked Waverly as having one of the eight best main streets in Iowa in 2023.
2. In 2015, Waverly was selected as one of the five cities in the nation to host Mumford & Sons "Gentlemen of the Road" tour.
3. Waverly's Christmas on Main and its "living windows" was featured on A&E's Holiday Town USA as the #3 best holiday event in the nation.
4. Zippia ranked Waverly #4 as a place with best work-life balance in Iowa.
5. Singletracks.com named Ingawinis Woodlands in Waverly to the top 10 best mountain bike trails in Iowa.

CLIMATE

Waverly's climate is continental in nature, characterized by four distinct seasons and a rather wide variation in temperature and precipitation.

AVERAGE TEMPERATURE

Winter: 23 degrees F
Summer: 80 degrees F

POPULATION

2022 - 10,522
2020 - 10,308
2018 - 10,323
2016 - 10,093
2015 - 10,066
2012 - 10,035
2010 - 9,874
2000 - 8,968
1990 - 8,539

ALTITUDE

912 Feet

6. NerdWallet named Waverly the #1 Best Place for Young Families in Iowa for its home affordability, prosperity and growth, quality of education and family friendliness.

7. Local Niche ranked Waverly in the top 10 cities in Iowa based livability using grades for weather, safety, schools and access to activities, jobs, housing and transportation.

8. The Waverly-Shell Rock School District has been ranked numerous times among the best in Iowa.

9. Waverly is a "gigabit city" with some of the fastest internet connections in the state.

Fun Facts



FAMILIES FIRST CHILD CARE and Learning Center

Waverly's faith-based licensed child care center offers care for children six weeks to school age.



Faith

Family

Our staff is dedicated to helping families develop deeper connections by providing the highest quality childcare and support services based on Christian principles.



Fun

Future

Contact us today to schedule a visit!

1661 3rd St. SW - Waverly, IA 319-559-2450
familiesfirstiowa@gmail.com Like us on Facebook

DEMOGRAPHICS

AVERAGE ANNUAL RAINFALL

35.3 inches

AVERAGE ANNUAL SNOWFALL

34.2 inches

DISTANCE TO MAJOR CITIES

Des Moines, IA - 132 miles
Minneapolis, MN - 223 miles
Chicago, IL - 291 miles
Omaha, NE - 264 miles

WORKFORCE

One of the Waverly area's most valuable assets is its high quality work force. The Waverly area benefits from a population of over 240,000 within a 45 minute commuting radius, setting the stage for a generous and diverse pool of available labor.

An Educated Workforce: Over 2/3 (68.7%) of the employed residents in the labor shed area have some level of education/training beyond high school. The town also has one of the lowest unemployment rates in Iowa. Area job listings can be found at www.waverlyia.com/careers

residents. It's a place for families to live and enjoy life with a friendly environment, a bustling downtown and a college town atmosphere. Designated as a Main Street Iowa Community, the downtown is home to a quality mix of service businesses, specialty shops, destination stores and restaurants. City leaders have set the course for a prosperous future through a unique partnership formed to bring economic success through the creation of employment opportunities and a revitalized downtown. Waverly is the county seat for Bremer County and a hub for activity. Its sister city is Eisenach, Germany, home of the famed Wartburg castle, from which local Wartburg College derived its name.

ABOUT WAVERLY

Located in northeast Iowa, Waverly is a beautiful community of more than 10,000

POLICE/FIRE DEPARTMENT

Waverly's police department consists of 16 officers, and the fire department consists of 30-40 volunteers.

FIRST BANK
Serving You First

MEMBER FDIC
EQUAL HOUSING LENDER

Invested in COMMUNITY, Invested in YOU!

To be invested in the communities that we serve and in our clients is at the core of what First Bank represents. We are here to help.

firstiowa.bank

Visit us in Waverly at:
316 E. Bremer Ave. & 921 W. Bremer Ave.

EDUCATION

Wartburg College, founded in 1852, is a private four-year liberal arts college of the Lutheran Church (ELCA) and is nationally recognized for community engagement. The college offers over 50 majors, pre-professional programs and certificate programs leading to the bachelor's degree. Wartburg has been ranked in The Princeton Review's rankings of "Best Midwestern Colleges", as well as in U.S. News and World Report's annual rankings of "America's Best Colleges."

Waverly-Shell Rock Community Schools are located within the communities of Waverly and Shell Rock. The district strives "to create a passion for learning that will sustain students for a lifetime." With outstanding faculty and engaged students, W-SR Community Schools have consistent high test scores, and are highly regarded nationally, earning a bronze medal from the U.S. News and World Report. The school district has also been an early technological adopter using the one-to-one iPad program and implementing a new engineering curriculum.

St. Paul's Lutheran School is committed to providing quality education in an environment where Christian faith is taught, learned and lived.

RENEWABLE ENERGY

Waverly Utilities is an award-winning national leader in electric reliability, safety and renewable energy. Waverly Utilities is also a telecommunications utility offering gigabit high-speed Internet, enhanced cable and digital telephone services available to each home and business throughout the community.

HEALTH CARE

Waverly Health Center is a 25-bed critical access hospital in Waverly. WHC provides inpatient care, ambulatory surgery, outpatient services, speciality clinics and emergency room care to area residents. More than 50 health care providers and visiting specialists care for patients at WHC, allowing area residents local access to specialized care.

NEWSPAPERS

The Waverly Newspapers is published twice weekly. The Bremer County Independent and Super Shopper on Tuesdays and the Waverly Democrat on Thursdays, total distribution is 12,000 homes.

RADIO


Bremer County's only commercial Radio station KWAY 1470 AM/96.3FM plays classic country music. Y99.3FM plays current hits and serves Waverly and the greater Cedar Valley. KWAR (89.9 FM) is Wartburg's student station.

CHURCHES

There are nearly two dozen churches which represent: Baptist, Catholic, Community, Episcopal, Lutheran, Methodist, Nazarene, Life Church and United Church of Christ. *See pg. 24-26.

AIRPORT

Waverly Municipal Airport, completed in 1967, is located NW of Waverly on Business Route 218. It offers a runway, flight instruction, aircraft rental and fuel sales.



Care close to home

Janesville | Nashua | Shell Rock | Waverly

WAVERLY HEALTH
— C E N T E R —

(319) 352-4120 | WaverlyHealthCenter.org





professional services

**IT'S CRYSTAL CLEAR WHO TO CALL
FOR SERVICE 24 HOURS A DAY!**



CRYSTAL *LENNOX*

HEATING AND COOLING PLUMBING AND EXCAVATING

1210 W Bremer Ave. Waverly, IA • Phone 319.352.3241 • Fax 319.352.0513
120 S Transit Street, Denver, IA



**Elsamiller
Electric Co.**



Jon Elsamiller

Find us at our new location
in September 2023

101 39th Street NE, Waverly
319-352-3917
elsamillerelectric.com

24-Hour Emergency Service
State Licensed & Insured
Family Owned and Operated for over 35 Years

RAMKER
Construction &
Supply, Inc.

220 8th Avenue S.W. • Waverly, Iowa



CALL US FOR YOUR BUILDING
NEEDS, BIG OR SMALL

- Door & window replacement
- Decks
- Basement finish
- Additional projects on request

319-352-4286

Serving Waverly for over 60 years

MINI STORAGE

Month to Month Rental
New Climate Controlled Units
ramkerstorage.com



ROLL IN ANYTIME
NO APPOINTMENT NEEDED!



**WAVERLY TIRE
COMPANY**



**Family Owned &
Operated since 1951**

2116 4th St. SW,
Waverly, IA 50677
319-352-2906 • 319-352-5154
WWW.WAVERLYTIRES.COM



professional services

BREMER
MUTUAL INSURANCE



INSURING, PROTECTING & INVESTING IN NORTHEAST IOWA SINCE 1875.

111 1ST AVE SE, WAVERLY, IA | (319) 352-1863

Dales Service

Auto Repair & Towing



We Take Pride in Our Work
Towing • Brakes • Alignments
Suspension • Tune-Ups • Exhaust Systems
Diagnostics • General Maintenance
24 hr. Towing (319) 230-3081

119 4th St. SW, Waverly | 319.352.3574 | *Troy Carolus, Owner*



Professional Installation
Family Owned and Operated

**FLOOR COVERINGS
WINDOW TREATMENTS
INTERIOR DESIGN**

1200 10th AVE SW • Waverly • 319-352-5652

www.2guysinteriorfocus.com

HOURS: Monday - Friday 9:00 AM to 5:00 PM

**Get the care & support
you need so you can focus on
*Making Each Moment Matter.***

- Hospice care in your home or at a facility (covered by Medicare, Medicaid and most private insurances)
- Grief support for youth & adults (at no cost)
- Palliative care for persons with a serious illness who are not ready for hospice
- Case management for persons living with HIV



**CEDAR VALLEY
HOSPICE**

319.352.1274 | cvhospice.org | 800.626.2360



professional services

GARRY'S TIRE
CAR CARE CENTER

2003 E. Bremer Ave. Waverly | 319-352-5552

*Celebrating 50 years
of pleasing people!*

**MAKE SURE TO
CHECK OUT OUR
CAR WASH!**



**Seasonal
Solutions**



Landscaping & Lawn Care

Retaining Walls • Paver Sets • Fire Pits • Outdoor Living Areas
Professional Services • Insured & Bonded

**Contact us today! Scott (319) 215-9741
or seasonalsolutions14@gmail.com**

www.rolingford.com



**Roling
Ford**

1105 Mason Way, Shell Rock, IA 50670 | 319.885.4540

DISCOVER BREMER COUNTY



Bremer County is located in Northeast Iowa. As of the 2020 census, the population was 24,276. Its county seat is Waverly. The county was named for Fredrika Bremer, a Swedish traveler, poet, and author. Bremer County is included in the Waterloo-Cedar Falls, IA Metropolitan Statistical Area. Bremer County is made up of 8 cities: Denver, Frederika, Janesville, Plainfield, Readlyn, Sumner, Tripoli and Waverly. It also includes 4 unincorporated communities and is divided into 14 different townships.

DENVER

**Denver City Hall,
100 Washington St., Denver
319-984-5642**

www.cityofdenveriowa.com

Called the Mile Wide City, Denver is known for its excellent school system, the progressive vision of its leaders and the opportunities for growth it offers both in the public and the private sectors. It has its own grocery store as well as a vibrant main street. Five council members and a mayor lead the city. The town's annual celebration, Denver Breakaway Days, usually takes place the third weekend of August. There were 1,919 people, according to the 2020 U.S. Census.



Cyclone City Park, Denver, IA



THERE WHEN YOU NEED US MOST

Serving you is our specialty, because we make your needs our priority. Get coverage from people you know will be there when you need them most.

Trust in Tomorrow.[®]
Contact us today.

"Trust in Tomorrow." and the "A Grinnell Mutual Member" mark are registered trademarks of Grinnell Mutual Reinsurance Company. © Grinnell Mutual Reinsurance Company, 2020.



FM **FIRST MAXFIELD**
MUTUAL SINCE 1860

DENVER, IA | WWW.FIRSTMAXFIELD.COM
800.366.7014 OR 319.984.5255

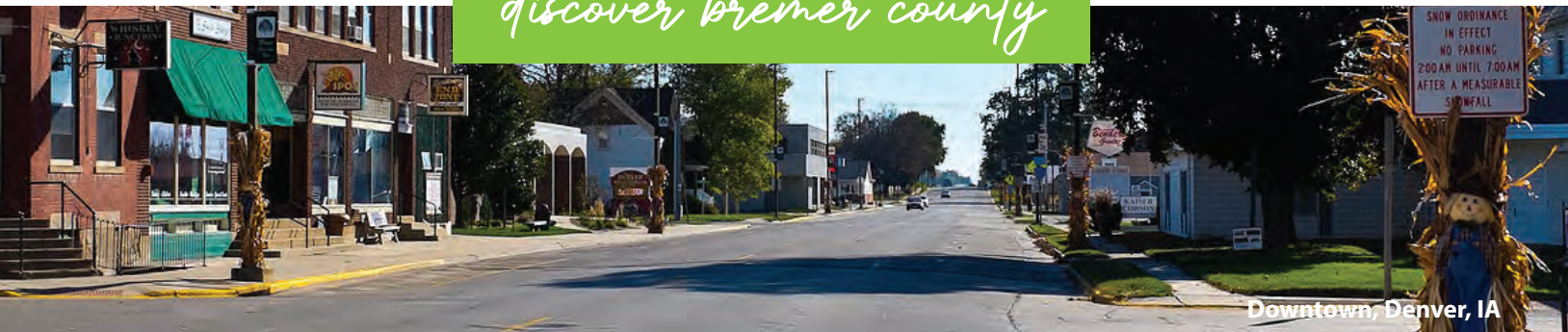


DENVER
FAMILY DENTAL

131 Tower Street, Denver, IA 50622
(319) 984-6191

Robert R. Piphon, DDS
Brendon T. Boerm, DDS

discover bremer county



Downtown, Denver, IA

DAVIK'S AUTO BODY

CELEBRATING OVER 50 YEARS IN BUSINESS
Your Vehicle Deserves the Best! Satisfaction Guaranteed!
300 Transit St., Denver, IA 50622 | 319-984-5995

MOTORCYCLE TOWING SERVICES, L.C.
MTS
RIDE WITH MTS, YOU WILL NEVER RIDE ALONE

UNITED STATES • ALASKA • CANADA • HAWAII
1-800-999-7064
401 S. STATE ST., DENVER, IA
WWW.MTS-TOWING.COM
INFO@MTS-TOWING.COM

RUDY'S SALES & SERVICE

SALES
SERVICE
RENTALS
TRAILERS
BATTERIES

319-984-5627
DENVER, IOWA

Denver, IA

**WELCOME
TO
DENVER
OUR HOME TOWN**

**We've Got
Your Family's Back**

Personalized insurance solutions to protect your family's financial future and security, no matter what.

**D GRINNELL
MUTUAL
DENVER
INSURANCE**

HOME • AUTO • FARM • COMMERCIAL

Serving you for over 40 years

Andrew Kahler
124 S. State St. Denver, IA
319-984-6151

Independent Agent,
Competitive Prices
& Personal Service



**A Trusted & Reliable non-profit facility
proudly serving the
Denver community since 1965**

Long Term Care • Skilled Therapy/Rehabilitation
Daily Restorative Programming • On-site physician visits
Laundry/Housekeeping • Private & Semi-Private rooms

Call or stop in for a tour!

Denver Sunset Home

235 N. Mill Street • Denver, IA
319-984-5372 | denversunsethome.com



**Store Specials plus
Weekly Savings!**
www.shopbrothersmarket.com

**Fresh Produce, Quality
Meats, Frozen Favorites,
Deli Items, Dairy &
Cheeses, Wine, Spirits &
Fun, Grocery Goods
& General Merchandise**

**Brothers
MARKET** **ACE
Hardware**

Your neighborhood store and a whole lot more!
**PLUS ACE HARDWARE FOR ALL YOUR
HOME IMPROVEMENT NEEDS!**

www.acehardware.com

1022 SKYLER STREET, DENVER, IA | 319-406-0004

MONDAY - SATURDAY 8 A.M.-8 P.M. | SUNDAY 9 A.M.-6 P.M.

Denver, IA



JANESVILLE

Janesville City Hall,
227 Main Street, Janesville
319-987-2905
www.janesvilleia.com

Janesville, the first town platted in Bremer County in 1849, is small in size, but large in opportunities and abundant with friendly people. The population, according to the 2020 Census is 1,034 people. It is governed by a mayor and a five-member city council.

Named after its founder's wife, Jane Barrick, today Janesville is a rural community with tree-lined streets nestled high along the rippling water of the Cedar River. It's bordered by rich farmland and forest green fields, plus Highway 218 (Avenue of the Saints that runs between St. Paul and St. Louis). Local people are proud of their town, which has several churches, a library, lumberyard, eating establishments, and numerous other factories and businesses. It is small enough to be "homey" but large enough

in organizations so that there is something for everyone. Its excellent quality Pre-K-12 school has graduated outstanding talents and is staffed by caring, dedicated teachers. The Janesville Community is forward-looking and planning for future businesses and homeowners through long-range goals. The town's celebration is called Janesville Days and happens in late July.



Dr. PullStart
Outdoor Power Specialists

Outdoor Power Equipment • Lawn & Garden • Powersports
Golf Carts • Go-Karts • Scooters • Snow Removal Equipment

www.drpullstart.com
319.885.4417
1058 Mason Way, Shell Rock, IA 50670



CLIFF'S PLACE

BREAKFAST
LUNCH & DINNER
DAILY SPECIALS
MON-SAT OPENS AT 6 AM

1404 Easton Ave, Horton, IA
319-276-3114




Readlyn City Park, Readlyn, Iowa



READLYN

Readlyn City Hall
128 Main Street, Readlyn
319-269-6753

What do you expect from a town in Iowa that prides itself on an atmosphere where 851 friendly people co-exist with one old Grump?

Welcome to Readlyn, a town that offers the beauty of northeast Iowa with its surrounding fertile fields, clean air and welcoming community by the Wapsipinicon River. The spirit and pride of the residents is evident in Readlyn, which boasts great quality of life. Friendly, educated, community-minded people are Readlyn's most valuable resource.

The town was named after a representative from the Townside Company, which came to the area in 1903 to build a station for the Chicago Great Western railway line that was to connect Waverly to Oelwein.

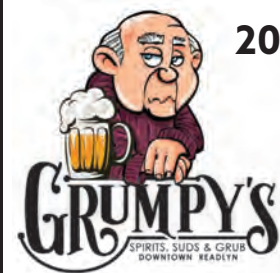
Today, Readlyn is governed by a five-member city council and a mayor and has 845 residents, according to the 2020 Census.

The town's annual celebration is called, appropriately, Grump Days, it takes place in June.



MAKE IT AN **EVENT** TO *remember*

Book your event by calling 319-279-3839 or email mlkeerani3@gmail.com



209 Main St, Readlyn, IA

Eat, Drink & Gather!

Tues-Thur 4-10 pm
Fri 4 pm - 2 am
Sat 11 am - 2 am
Sun 8 am - 3 pm

PLAINFIELD

City of Plainfield
604 Main Street, Plainfield
319-276-3449

Plainfield has an estimated 438 residents according to the 2020 Census. It is governed by a five-member city council and a mayor.

In 2016, the town marked its 150th anniversary during its annual celebration in July.

The town offers a friendly and safe atmosphere with a great school system and a quality of life, amply captured in the city's motto, "The Heart of a Rural Community."

The town's annual celebration Plainfield Days happens the second weekend in July.

FREDERIKA

Frederika Town Hall,
111 3rd St., Frederika
319-275-4579

Frederika is a city in Bremer County, Iowa. The population was 204 according to the 2020 census. It is named for Fredrika Bremer (note different spelling), the Swedish author, for whom the surrounding county was also named.

Frederika is led by a mayor and the city council. The town's annual celebration is in early July, coinciding with the 4th of July celebration. Frederika is known for the hospitality of its people and the July 4th fireworks.



Plainfield Downtown, Plainfield, Iowa



Frederika, Iowa

TRIPOLI

Tripoli City Hall

303 South Main, Tripoli

319-882-4801

Tripoli is known as the “Home of Sweet Marsh,” a wildlife area of 2,855 acres of pristine plant and animal species.

Known for its environmentally minded people, Tripoli today has 1,191 residents according to the 2020 Census, who are proud of a friendly downtown, the Tripoli school system and the 2,855 acre Sweet Marsh. Tripoli’s community means dedicated volunteers, a tribute to veterans, five area churches and small town hospitality.

Agriculture is a major economic driver & health providers offer first-class care. Many recreational opportunities contribute to a fun, safe and friendly environment.

Sweet Marsh, Tripoli, Iowa



Tripoli, Iowa



Tripoli, Iowa



Tripoli, Iowa

SUMNER

Sumner City Clerk
105 E 1st St., Sumner
563-578-3242

www.mysumneriowa.com

Nestled in Northeast Iowa, Sumner straddles Bremer and Fayette counties, along Highway 93.

Its motto, "A city with a future," captures the spirit of this quaint town.

Established in 1870, today its population numbers 2,021 according to the 2020 U.S. Census. The town is governed by a five-member city council and a mayor.

Its annual celebration, Sumner Days, takes place on the third weekend in July.

Sumner features amenities that are standard in big city living, but come with a small town feel. The community prides itself on its family-friendly environment, newly reconstructed hospital, a modern public library, an aquatic center, a local grocery store, and many mom and pop shops on Main Street. Sumner is committed to education, business growth and opportunities for all.



Downtown, Sumner, Iowa



Community Memorial Hospital
UnityPoint Health

The Best Care, When and Where You Need It

From emergency care to family medicine and specialists, amazing care is close to home.

CMH (563) 578-3275 | Medical Clinic (563) 578-5375
Specialty Clinic (563) 578-2150 | Fredericksburg Clinic (563) 237-5316

unitypoint.org/sumner

Important information

IMPORTANT PHONE NUMBERS

Emergency	911
Road Conditions	511
Iowa State Patrol	(319) 277-4761
Bremer County Sheriff	(319) 352-5400
Waverly Police Department	(319) 352-5400
Waverly Fire Department	(319) 352-5521

MEDICAL ASSISTANCE

Waverly Health Center	(319) 352-4120
Emergency	(319) 352-4901
WHC Walk -In Clinic	(319) 483-1400
Unity Point Express Urgent Care	(319) 352-1037

AREA INFORMATION SERVICES

Bremer County Courthouse	(319) 352-0340
Waverly Chamber of Commerce	(319) 352-4526
Waverly City Hall	(319) 352-4252
Waverly Utilities	(319) 559-2000
Waverly Public Library	(319) 352-1223



ADVERTISING INDEX

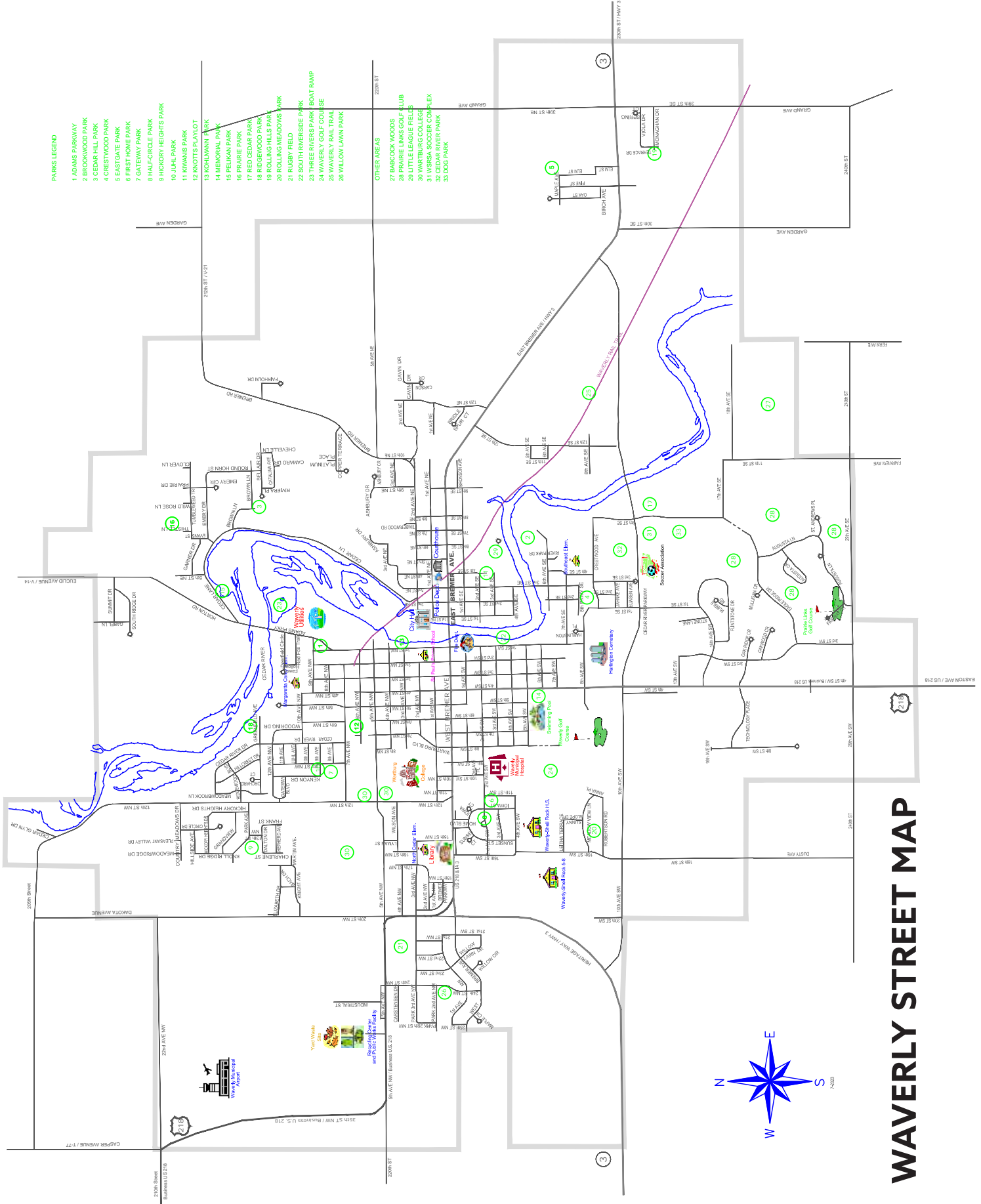
2 Guys Interior	31	Faith Lutheran Church	25	Seasonal Solutions.....	32
4 Queens Dairy Cream	20	Families First Child Care.....	27	Spaw Amoré & Boutique	9
BJ Flooring	16	Fareway.....	16	St. John Lutheran Church	24
Bremer Mutual Insurance.....	31	Fidelity Bank.....	23	St. Mary's Catholic Church.....	24
Brother's Market.....	35	First Baptist Church	24	St. Paul's Church & School	24
Butler-Bremer Communications....	4	First Maxfield Mutual.....	33	Tenenbaum's.....	15
Cedar Valley Hospice	31	First Bank	28	The Mixing Bowl.....	20
Cliff's Place	36	Garry's Tire Car Care Center	32	The Other Place II	20
Cobblestone Inn	21	Grumpy's Spirts, Suds & Grub...	37	The Old Mill.....	22
Community Memorial Hospital	40	Hy-Vee	17	The Printery.....	16
CrawDaddy Outdoors.....	7	Life Church	25	Tiedt Nursery	17
Crystal Heating & Plumbing	30	Love & Lace	16	Thompson Shoes.....	17
CUSB Bank	2	Miller True Value.....	17	Trinkets & Togs	15
Dairy Queen.....	20	MTS Motorcycle.....	34	Trinity United Methodist.....	25
Dales Service.	31	Neighborhood Home.....	15	Waverly Golf Course.....	7
Daviks Autobody.....	34	New Day Dairy.....	22	Waverly Health Center.....	29
Denver Family Dental.....	33	Paws Amoré	9	Waverly Newspapers	22
Denver Insurance	34	Peace United Church of Christ ..	24	Waverly Tire Company.....	30
Denver Sunset Home.....	35	Pizza Ranch	20	Waverly Utilities	44
Dr. Pull Start.....	36	Ramker Construction.....	30	Wild Carrot.....	15
Elsamiller Electric Co.....	30	Roling Ford	32		
El Sol Mexican Restaurant.....	20	Rudy's Sales & Service.....	34		

PARKS LEGEND

- 1 ADAMS PARKWAY
- 2 BROOKWOOD PARK
- 3 CEDAR HILL PARK
- 4 CRESTWOOD PARK
- 5 EASTGATE PARK
- 6 FIRST HOME PARK
- 7 GATEWAY PARK
- 8 HALF-CIRCLE PARK
- 9 HICKORY HEIGHTS PARK
- 10 JUBIL PARK
- 11 KIWANIS PARK
- 12 KNOTTS PLAYLOT
- 13 KUCHUMANN PARK
- 14 MCKENNA PARK
- 15 PELICAN PARK
- 16 PRINCE PARK
- 17 PRINCE PARKS
- 18 REDWOOD PARK
- 19 ROLLING HILLS PARK
- 20 ROLLING MEADOWS PARK
- 21 RUBY FIELD
- 22 SOUTH RIVERSIDE PARK
- 23 THREE RIVERS PARK
- 24 WAVERLY BOAT RAMP
- 25 WAVERLY GOLF COURSE
- 26 WILLOW LAWN PARK

OTHER AREAS

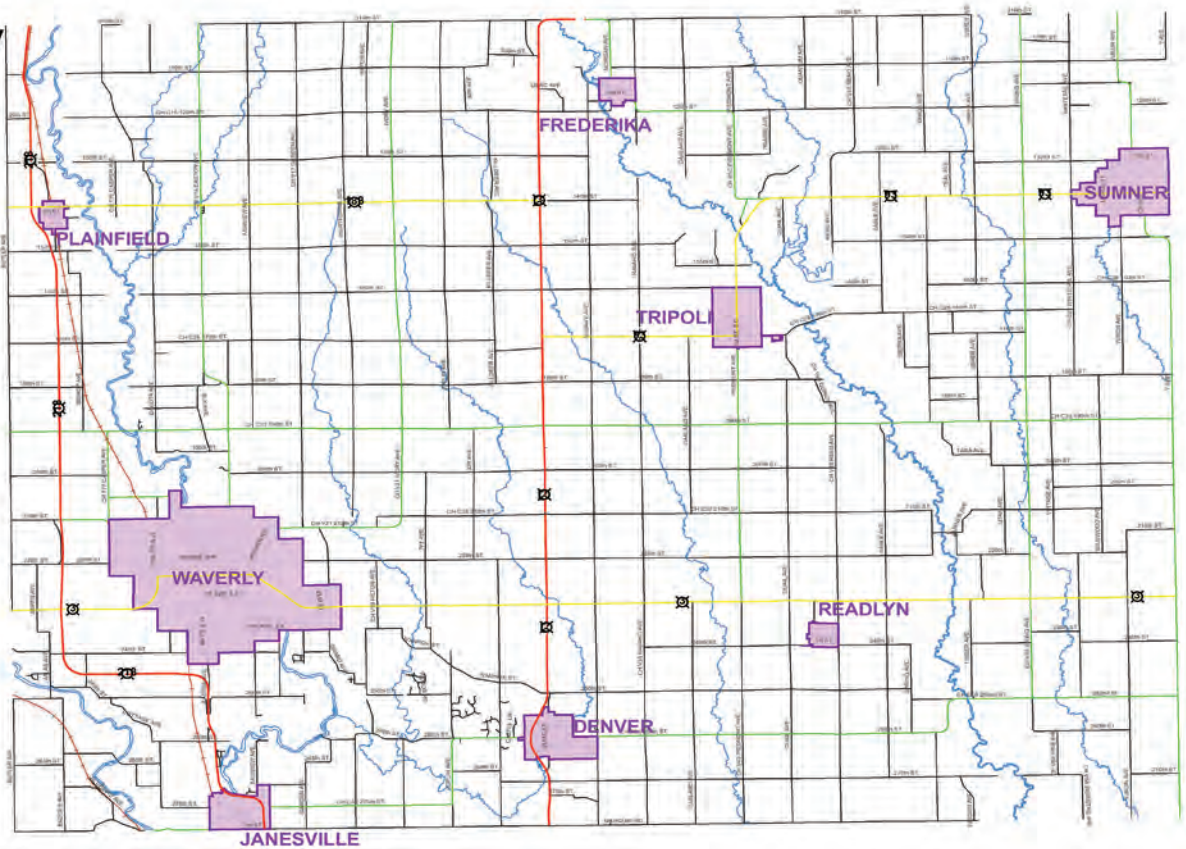
- 27 BABCOCK WOODS
- 28 PRAIRIE LINKS GOLF CLUB
- 29 LITTLE LEAGUE FIELDS
- 30 WARTBURG COLLEGE
- 31 WASKA SOCCER COMPLEX
- 32 WASKA SOCCER COMPLEX
- 33 DOOG PARK



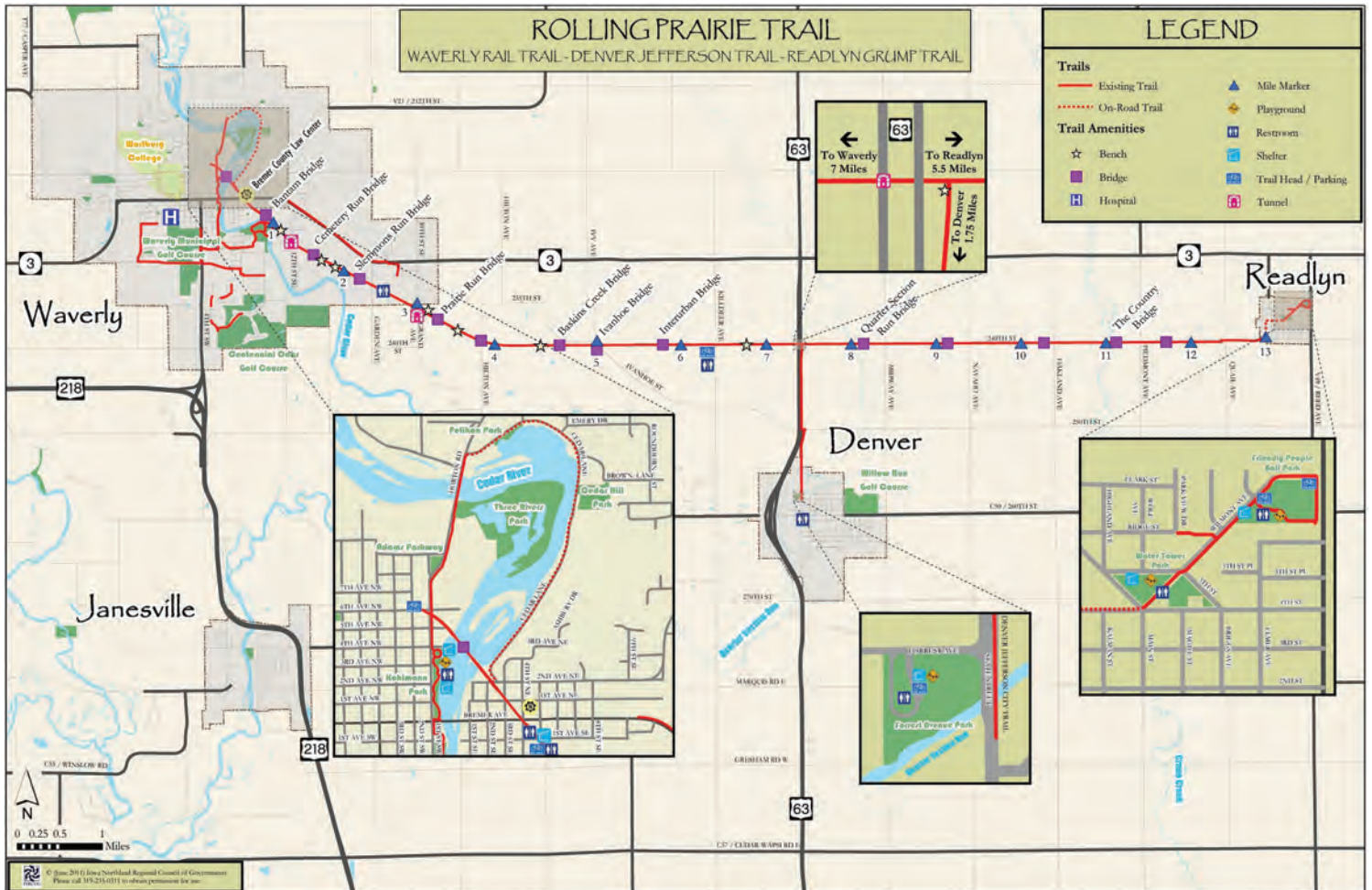
WAVERLY STREET MAP

Bremer County Street Map

- Legend**
- Cities
 - Rivers / Streams
 - Railroads
 - Local Roads
 - County Hwy
 - US & State Hwy**
 - State Hwy
 - US Hwy



™ Bremer County GIS Department



WAVERLY...

One of Iowa's first **10 GIGABIT** municipal networks offering the fastest connectivity to residents, businesses and public facilities



Reliable • Affordable • Telecommunication Services



- Ultra-Fast, Full-Fiber Network, from offices and schools to our hospital and community hubs
- Waverly's **10 GIGABIT** speed full-fiber infrastructure makes Waverly home to some of the best digitally connected businesses in the world, supporting its economy by attracting new businesses and accelerating growth!



319-559-2000
waverlyutilities.com