

2017 • 2018



VISIT

WAVERLY

IOWA



Waverly
CHAMBER OF COMMERCE

A Main Street Community
waverlychamber.com

ARE YOU READY FOR THE **POWER OF MORE?**



- Insanely-fast High Speed Internet services
- Custom HD Cable Packages to fit your entertainment needs
- Digital phone services for home and business
- FREE In-home GigaCenter that wirelessly connects to your TV, computer and other digital devices
 - FREE "Secure IT" antivirus coverage
 - No contract!



1002 Adams Parkway, Waverly | 319-352-6251 | waverlyutilities.com



6



10



13



17



32

WHAT'S INSIDE >>

FEATURES

- | | | |
|---|---|--|
| 05 WELCOME TO WAVERLY | 17 WHERE TO DRINK & DINE | 27 DEMOGRAPHICS & SERVICES |
| 06 WHAT TO DO
Arts, Entertainment, Family Fun, Golf Courses, Historical Interests, Parks & Recreation | Restaurants, Diners, Pubs & Meeting Spaces | 32 DISCOVER BREMER COUNTY
Denver, Frederika, Janesville, Plainfield, Readlyn, Sumner & Tripoli |
| 10 ANNUAL CALENDAR OF EVENTS | 22 WHERE TO STAY
Campgrounds & Hotels | 39 IMPORANT INFO |
| 13 WHERE TO SHOP
Shop Local, Buy Local | 24 WHERE TO WORSHIP
Waverly Churches | 40 MAPS |
| | 26 WARTBURG COLLEGE | |

**PUBLISHED BY
THE WAVERLY
NEWSPAPERS
AUGUST 2016**

311 W. BREMER AVE.
WAVERLY, IOWA
319-352-3334

WWW.WAVERLYNEWSPAPERS.COM



Deb Weigel
PUBLISHER

Anelia K. Dimitrova
REGIONAL EDITOR

Melaine Buzynski
GENERAL MANAGER

Tracy Cummings
REGIONAL SALES MANAGER

Carrie Fowler
OFFICE MANAGER

Carrie Billman
GRAPHIC DESIGN

*Photos courtesy of Waverly Newspapers
and the Waverly Chamber of Commerce.*



**CHECK OUT OUR VISITORS CENTER
WAVERLY CHAMBER OF COMMERCE
118 East Bremer Ave. Waverly, Iowa
319-352-4526
www.waverlychamber.com**

Edward Jones®

MAKING SENSE OF INVESTING



Jerry Woodin

Financial Advisor

203 East Bremer

Waverly, IA 50677

319-352-6773

- 401(k) Rollovers, Transfers, IRA's
- Retirement Planning & Estate Considerations
- CD's
- Stocks, Mutual Funds
- Annuities
- Tax-Advantaged Investments
- 529 College Savings Plan

www.edwardjones.com





Welcome TO Waverly

Waverly is a college river town, rich in heritage with approximately 10,000 residents located in northeast Iowa. It is a community where residents enjoy a high quality of life, friendly and progressive merchants, and a college town atmosphere.

In 1859 the city was founded along the Cedar River by William Patterson Harmon who is also credited with establishing Waverly as the Bremer County Seat. Over the years, Waverly has grown with the establishment of Wartburg College and the introduction of rail transportation. Today, Waverly is a vibrant, progressive community with a diverse commercial, agricultural, financial and industrial base.

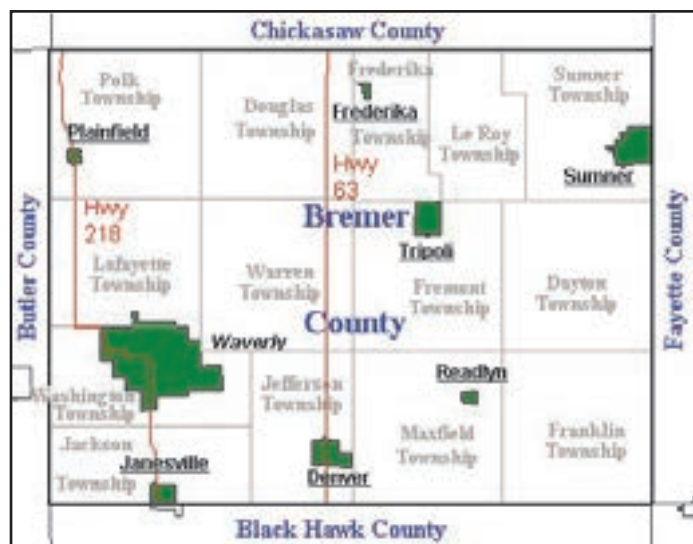
Waverly's central business district spans the Cedar River, while numerous other businesses and industries are nestled throughout the community. Community assets include 12 miles of recreational trails, two 18-hole golf courses, the Waverly Public Library, the Waverly Health Center, the Wartburg-Waverly Sports & Wellness complex, and abundant cultural opportunities.

Waverly's downtown is a designated Main Street Iowa District. The district is home to a quality mix of service businesses, specialty shops, destination stores and restaurants. These businesses and others are part of evolving "life and leisure" business clusters.

As the 17th fastest growing city in Iowa, Waverly maintains a focus on balanced growth and is an ideal location for commercial, industrial and corporate headquarters and retail developments.

As the county seat for Bremer County, Waverly is a hub of activity. City leaders have set the course for a prosperous future

through their strong commitment to a safe community and investment in parks, trails and recreation. These leaders have also formed a unique partnership to cultivate economic success through the creation of employment opportunities, a revitalized downtown district, and a sense of community which makes people want to live, work and play in Waverly.



Waverly is located in northeast Iowa and is the seat for Bremer County. More information about other communities in Bremer County can be found on pages 32-38.

WHAT TO DO

Gentlemen of the Road Stopover



Wake up early or wake up late, whenever you wake up, adventure awaits! Waverly offers multiple outdoor opportunities on the trails, on sports fields, down the block at your neighborhood park, on an award-winning golf course, or at the pool. In Waverly, we believe in working hard to play even harder. [Learn about all the fun ways you can enjoy Waverly today!](#)

ARTS & ENTERTAINMENT

PALACE THEATRE

90 East Bremer Ave., Waverly
319-352-4899
www.waverlypalace.com

This tri-plex movie theatre features first-run movies and Dolby Surround Sound EX system. Check out the movies playing now at the web address above.

WARTBURG COMMUNITY SYMPHONY

100 Wartburg Blvd., Waverly
319-352-8200
www.wartburg.edu/symphony

Since 1952, Waverly has been one of the smallest communities in the country to support a semi-professional symphony orchestra. The Symphony performs four concerts a season, September through April. The symphony is open by audition to musicians from the Waverly area and to Wartburg College students and faculty.

FAMILY FUN

WAVERLY PUBLIC LIBRARY & BUTTERFLY GARDENS

1500 W. Bremer Ave., Waverly
319-352-1223
www.waverlyia.com/library

Come stroll along the paths and enjoy native plants and flowers. There are several benches, tables, and patio areas which make the garden an ideal location for snapping photos, reading, having a picnic, or working on your laptop or tablet while connected to the library's wi-fi network.

WARTBURG-WAVERLY SPORTS & WELLNESS CENTER (THE W)

100 Wartburg Blvd., Waverly
319-352-8311
www.the-w.org.com

See page 26 for more details.

WAVERLY BOWL INN

919 4th St. SW, Waverly
319-352-4727
www.waverlybowl.com

Waverly Bowl Inn is a great place to have fun times with family and friends. Plenty of bumper bowling lanes just for kids! Also COOL Cosmic bowling, where you bowl with the lights down – great music turned up and awesome special effects lighting... it looks like a nightclub! When looking for family fun in Waverly look no further than Waverly Bowl Inn.



106 W. BREMER,
WAVERLY
319-352-1961

LARGEST TATTOO SHOP IN THE CEDAR VALLEY

Opened in 2007 in Waverly we offer the best artists in the Cedar Valley area with reasonable prices and hospital sterilized for your own protection!
Tuesday - Friday 12:00 p.m. - 7:00 p.m. • Saturday 10 a.m. - 7:30 p.m.
Sunday & Monday by Appointment Only

www.wolfcreektattoos.com



GOLF COURSES

PRAIRIE LINKS GOLF COURSE

19 Eagle Ridge Dr., Waverly
319-483-1765
www.prairielinksgolf.com

Awarded the 18-Hole Course of the Year by the Iowa Golf Association in 2010, Prairie Links Golf Club is a semi-private country club. Members enjoy the spectacular links style golf course. Destination guest play provides visitors to Waverly the opportunity to experience one of the Cedar Valley's premiere golf courses.

WAVERLY MUNICIPAL GOLF COURSE

705 8th St SW, Waverly
319-352-1530
www.waverlygolf.com

A progressive 18 hole public golf course. Prepare yourself for an unparalleled golfing experience. Our course is a pleasure for golfers of any skill level to play. Test your accuracy with our fairways, water hazards and sand traps; we have everything you need to challenge you and improve your game.

HISTORICAL INTERESTS

BREMER COUNTY HISTORICAL MUSEUM

402 W. Bremer Ave., Waverly
319-352-2072
www.bremercountyhistoricalsociety.org

Constructed in 1862 of native timber and brick from a local kiln, the Bremer County Historical Museum is a three-story brick structure and was the first large hotel and stagecoach stop in the area. Succeeding the hotel, the building housed the CaPhenin Chemical Co., a pill factory owned by the Dr. Frank Osincup family. Now the building houses many treasures from

the area and tells of tales of life in Waverly and Bremer County. With artifact displays, theme rooms take visitors back to a time we no longer know. The museum is open May through October on Monday through Saturday from 1:30 to 4 p.m. and on Sunday from 2 to 4 p.m. Admission is \$2 for adults and \$1 for children.

VETERANS TRIBUTE

Bremer Ave. & 4th St. SW, Waverly
www.waverlyvets.us/veterans-tribute.html

Located on the corner of West Bremer Avenue and Fourth St. SW, the Waverly Area Veterans Tribute is the local site for many celebrations honoring veterans. An area in front of the tribute presents engraved bricks memorializing all veterans.



Bremer County Historical Museum

Waverly Golf Course
"More than a golf course"

18 HOLES + CART FOR \$26 • MON. - FRI. BEFORE 2 PM
705 8TH ST. SW, WAVERLY, IA • 319.352.1530
WWW.WAVERLYGOLF.COM

KAISER
CORSON Funeral Homes
"Our Way Of Life Since 1901"



Waverly, IA 319-352-1187
Denver, IA 319-984-5379
Readlyn, IA 319-279-3551
Shell Rock, IA 319-885-4321

www.kaisercorson.com

PARKS & RECREATION



Shades of Rhythm Amphitheater

The City of Waverly manages 25 individual parks. From play units to basketball courts and rugby fields, Waverly's parks have something for everyone. For a complete listing of parks, visit www.waverlyia.com.

CITY PARKS

PELIKAN PARK

1401 Cedar Lane Dr., Waverly

Along the back waters of the Cedar River on Cedar Lane east of Horton Road, Pelikan Park is a popular area for fishing or ice skating.

BROOKWOOD PARK

415 6th Ave. SE, Waverly

A large area along the Cedar River by Waverly's famous Green Bridge. It is home to the Green Bridge Disc Golf Course, has several mature trees, open space and has an undeveloped area to the east along the river, populated with walking trails. There is a non-motorized boat ramp and fishing at this park is very popular.

MEMORIAL PARK

403 5th Ave. SW, Waverly

This is Waverly's main city park. The park features Kids Kingdom,

a large wooden play unit, three lighted ball diamonds, and an outdoor pool featuring two water slides and skate park. Memorial Park is also home to the annual Bremer County Fair.

SOUTH RIVERSIDE PARK

701 1st St. SW, Waverly

Running along the Cedar River south of the Fire Station, this park has a recreational trail, shelter, playground equipment and beautiful open area to the south.

KOHLMANN PARK

101 1st St. NW, Waverly

Kohlmann Park provides an ideal location for the riverfront amphitheater, as it adequately serves 400-500 residents each Thursday evening in the summer for the municipal band concert series the Waverly Chamber puts on every year. The centralized location also features connecting trails, river access, well shaded seating, public restrooms and play equipment for patrons to enjoy.

Shades of Rhythm Amphitheater

Shades of Rhythm performance amphitheater was constructed the summer of 2014 on the Cedar River in Kohlman Park, and offers a special gathering space for all to enjoy in the heart of our community. The amphitheater acts as an open air gathering space which welcomes citizens and visitors alike to partake in a myriad of public performing arts events as well as private celebrations.

Kohlmann Park



CrawDaddy
OUTDOORS

319.352.9129
207 E BREMER AVE
WAVERLY, IA 50677

CrawDaddy

 camping
 kayaking

 backpacking
 outdoor cooking

 safety clinics
 guided trips

WWW.CRAWDADDYOUTDOORS.COM

PARKS & RECREATION

OUTDOOR RECREATION

WAVERLY RAIL TRAIL

The Waverly Rail Trail features several amenities, including seven bridges, three underpasses, and abundant flora and fauna typical of Iowa's four seasons. It utilizes the former Union Pacific Railroad right-of-way. Trail users will find parking, a picnic shelter, and benches at 400 1st Avenue SE as well as restroom facilities at the nearby Kwik Star. Parking is available at the Trailhead at 6th Avenue NW and Killdeer Avenue. Traveling west to east, the Waverly Rail Trail crosses the Cedar River via a double wide 500' bridge, traverses downtown Waverly and continues through the countryside to U.S. Highway 63 where the Denver Jefferson Trail connects to the City of Denver to the south and where the Readlyn Grump Trail takes users east to the City of Readlyn. *see map on page 42

WAVERLY OUTDOOR POOL

510 5th Ave. SW, Waverly

319-352-6249

www.waverlyia.com/leisureservices/pool

Enjoy Waverly's outdoor public pool from Memorial Day weekend through late August. Featuring two water slides,

kiddie pool with large floatables, the pool offers great family fun and relaxation in the heat of the summer season.

CRAWDADDY OUTDOORS

207 East Bremer Ave, Waverly

319-352-9129

www.crawdaddyoutdoors.com

Located in downtown Waverly, CrawDaddy Outdoors offers outdoor equipment rentals and adventure packages for a variety of recreational activities throughout the year.

WAVERLY-SHELL ROCK SOCCER COMPLEX

Waverly-Shell Rock Soccer Association

202 Cedar River Parkway, Waverly

The W-SR Soccer Complex includes nine full-size competition fields with one of them being lit. It includes permanent restrooms, concessions & ample parking.

PETSAFE® OFF-LEASH DOG PARK

www.waverlyia.com/leisureservices

The Waverly PetSafe® Off-Leash Dog Park is a new amenity to Waverly area residents and visitors. The park is located in southeast Waverly near 8th Street SE and 17th Ave SE.



NAGLE SIGNS INC.

Your **FULL SERVICE** Sign Company
DESIGN / MANUFACTURE / INSTALL / SERVICE

800-728-4604
Local Sales Rep Scott Kane 319-269-5528
1020 WILBUR AVE. • WATERLOO, IA

Awnings - Metal & Plastic Letters
Banners - Electronic Message Centers
Lighted & Non-Lighted Signs
Vehicle / Boat Wraps
Custom Neon Signs & Repair

WWW.NAGLESIGNS.COM

Find us on Facebook

CALENDAR OF EVENTS



Throughout the year, Waverly and surrounding communities plan a variety of events for people of all ages to enjoy. Visit our online calendar of events for more info at waverlychamber.com.

FEBRUARY

CANDLELIGHT SKI

Waverly Rail Trail

www.waverlyia.com

Enjoy a candlelit ski on the Waverly Rail Trail during the Annual Candlelight Ski event which takes place the 1st Saturday in February. 1.1 miles of the trail are illuminated for skiing and walking with over 400 luminaries, beginning at the trailhead located behind Kwik Star East, 400 E. Bremer Avenue. Complimentary Nestle hot cocoa is provided at the bonfire turn around. Snow shoes and cross country skis are available for rent at CrawDaddy Outdoors

MARCH

SPRING MIDWEST HORSE SALE

Waverly Sales Barn

2212 5th Ave NW, Waverly

www.waverlysales.com

One of the oldest and largest semi-annual horse sale auctions in North America, held the last week in March.

For a complete listing of events, visit us online at waverlychamber.com

MAY

ART WALK

Kohlmann Park

101 1st St. NW, Waverly

www.waverlyartwalk.com

Art Walk is Waverly's annual juried fine arts and crafts show. It is held the first Saturday in May at Kohlmann Park along the beautiful Cedar River in downtown Waverly. Artists from the tri-state area come to Kohlmann Park to sell their works of media ranging from: basketry, jewelry, pottery, photography, painting, and much more. Artists' booths line the winding sidewalk with a perfect view of the Cedar River, making a stroll through the park a pleasant way to view and purchase the artists' creations. There is also live music, food vendors, kids art activities and much more! Open to the public and people of all ages are invited to enjoy the day surrounded by artistic creations!

SPRING RETAIL EVENT

Waverly Merchants

www.waverlychamber.com

First Saturday in May Waverly merchants host an ARTrageous Shopping Event, in conjunction with the Waverly Art Walk, featuring new spring merchandise and artsy fun! Shop your way around town and enjoy spring savings, sweet treats, art and more!

WARTBURG & W-SR GRADUATIONS

Wartburg College

& W-SR High School, Waverly

Graduation ceremonies are held Memorial Day weekend.

WAVERLY'S FARMERS MARKET

200 Block 2nd Ave SE, Waverly
Every Saturday, May - October
Every Tuesday starting in June

Offering locally-grown produce, crafts, pottery, baked goods, fresh eggs, honey, canned jams, plants, hanging planters and seasonal items. 4th Saturday of the month kid's activities will be offered by the Waverly Area Creativity Co-Op plus there will be live music and non-profit informational booths. Saturday hours are from 8:30 to 11:30 a.m. and Tuesday hours are from 3 to 6 p.m.

JUNE

CONCERTS IN KOHLMANN

Kohlmann Park

101 1st St. NW, Waverly

www.waverlychamber.com

Concerts In Kohlmann, Waverly's summer concert series, which features the Greater Waverly Municipal Band along with other local entertainment takes place in June & July. Entertainment begins each Thursday evening at 6:30 p.m. in Kohlmann Park. Free popcorn & lemonade is available for all to enjoy along with food from a variety of vendors throughout the season.

CALENDAR OF EVENTS

WAVERLY CITY WIDE GARAGE SALES

Waverly

Second weekend in June.

GRUMP DAYS

Readlyn, Iowa

www.readlyn.com

Readlyn's annual town event held the third weekend in June.

JULY

FOURTH OF JULY

Frederika, Iowa

First week in July.

SHELL ROCK FOURTH OF JULY CELEBRATION

Downtown Shell Rock, Iowa

www.shellrockiowa.org

Shell Rock is known for its annual Fourth of July Celebration, which includes a parade and a spectacular fireworks display. Enjoy the beer garden, live music, food vendors & more. Held the first week of July.

PLAINFIELD DAYS

Plainfield, Iowa

www.facebook.com/Plainfield-Days

The annual celebration in Plainfield held the second weekend in July.

RIDICULOUS DAYS

Waverly Merchants

www.waverlychamber.com

Shop ridiculously low prices on quality products from both local merchants and sidewalk vendors, during Waverly's annual Ridiculous Days! Mark your calendars and join the shopping fun on the second Saturday in July for this exciting event. The ridiculousness begins bright and early at 7:00 a.m.

SUMNER DAYS

Sumner, Iowa

www.mysumneriowa.com

Annual Sumner Days celebration held the third weekend in July.

HERITAGE DAYS

Bremer County Fairgrounds

717 5th Ave SW, Waverly

www.waverlyheritagedays.com

Waverly Heritage Days is Waverly's town celebration. Lasting for three days during the third weekend in July, the festival kicks off Friday evening with an annual Hall of Fame induction and live entertainment. On Saturday morning, thousands enjoy the parade starting on Fifth Avenue NW and ending at the Fairgrounds. The entertainment continues at the Fairgrounds with activities for kids and families followed by a live band and fireworks.

JANESVILLE DAYS

Janesville, Iowa

www.janesvilledays.org

Annual Janesville Days celebration is held the end of July.

AUGUST

BREMER COUNTY FAIR

Bremer County Fairgrounds

717 5th Ave SW, Waverly

www.bremercountyfair.com

A Blue Ribbon Fair since 1875, the Bremer County Fair celebrates the best in local livestock and crafts. Also, don't miss the annual truck and tractor pulls, commercial and local exhibits, carnival, petting zoo and various contests, performances and concerts. The FFA and 4-H Parade of champions allows the best in young talent to showcase their winning exhibits. Enjoy some of the best vendors, contests and games throughout the entire week. Bremer County Fair is held the first week in August.

TRIPOLI DAYS

Tripoli, Iowa

www.facebook.com/Tripoli-Days

Annual Tripoli Days is held the first weekend in August.

BREAK-AWAY DAYS

Denver, Iowa

www.facebook.com/Denver-Break-Away-Days

Annual Denver Break-Away Days is held the third weekend in August.

SEPTEMBER

FALL RETAIL EVENT

Waverly Merchants

www.waverlychamber.com

Shop fall retail open houses during Waverly's annual Scarecrow Spectacular! Rake in the savings and see all the special items retailers have to offer for the upcoming fall season. This is a great chance for retailers to showcase fall merchandise and attract shoppers to their store with special discounts and savings.

OCTOBER

FALL MIDWEST HORSE SALE

Waverly Sales Barn

2212 5th Ave NW, Waverly

www.waverlysales.com

One of the oldest and largest semi-annual horse sale auctions in North America, held the first week in October.

JACK-O-LANTERN NIGHT

Downtown Waverly

www.waverlychamber.com

This event is for all the little ghosts and goblins to join the fun and fill their bags with treats provided by participating downtown merchants during Waverly's annual Jack-O-Lantern Night! Held the Thursday before Halloween.

CALENDAR OF EVENTS

NOVEMBER

HOLIDAY RETAIL EVENT

Waverly Merchants

www.waverlychamber.com

Shop Waverly first during the holiday season. Participating Waverly retailers have organized an area-wide shop local holiday campaign for the entire holiday shopping season. From special savings, to wish list creation, and Santa with his live reindeer, the holiday shopping season has something for everyone in Waverly! Holiday open houses kick off this month long celebration the 3rd weekend in November.

CANDLELIGHT WALK

Waverly Rail Trail

www.waverlyia.com

Enjoy a peaceful stroll on the Waverly Rail Trail illuminated by over 400 luminaries with LED candles the 2nd Saturday in November. Walk about 1.2 miles to the Bonfire turnaround and enjoy a cup of Nestle Hot Cocoa and some other delicious treats before walking back to the start. The Candlelight Walk takes place on the Waverly Rail Trail, beginning at the trailhead located behind Kwik Star East, 400 E. Bremer Avenue.

DECEMBER

SANTA'S ARRIVAL

Kohlmann Park

www.waverlychamber.com

Welcome Santa to Waverly at his house in Kohlmann Park the first Saturday in December! Bring your wish list and a camera to capture priceless memories with the Jolly Ol' Fella himself! You can also mail a letter to Santa by dropping it in his mailbox at Kohlmann Park. Be sure to include your full name and return address to ensure that Santa can reply!

CHRISTMAS WITH WARTBURG

100 Wartburg Blvd., Waverly

www.wartburg.edu/christmas

Christmas with Wartburg is a traditional celebration, as a college of the Evangelical Lutheran Church in America, to proclaim the Good News of Christ's birth in word and song. The four-concert series includes on and off campus performances attended by nearly 7,000 people each year. The program features the talents of the Wartburg Choir, Castle Singers, and Wind Ensemble, which tour

annually and travel abroad every third year, and The Ritterchor, St. Elizabeth Chorale, Kantorei, and Handbell Choir. Held the first weekend in December.

DENVER'S OLD-FASHIONED CHRISTMAS

Denver, Iowa

www.cityofdenveriowa.com

Annual Denver Christmas celebration features different events and Festival of Trees.

CHRISTMAS GREETINGS ON MAIN

Downtown Waverly

www.waverlychamber.com

Hosted by the Waverly Chamber of Commerce and Waverly Merchants, Christmas Greetings on Main features decorated store fronts along historic Bremer Avenue that come alive with Christmas scenes throughout the evening. Be sure to see Santa listening to children's requests at his home in Kohlmann Park. Warm up with a cup of hot cocoa at several "Hot Spots" located throughout downtown. Live ice sculpture carvings, a festival of trees and free horse drawn trolley rides are just some of the many highlights of this annual celebration held the second Thursday in December.

SANTA & HIS LIVE REINDEER

Kohlmann Park

101 1st St. NW, Waverly

www.waverlychamber.com

Gather around as Santa's reindeer join him in Kohlmann Park! A few of Santa's magical friends will touch down in Waverly before flying Santa back to the North Pole for Christmas! Be sure to come & bring your camera! This takes place the 3rd Saturday in December.

Christmas Greetings on Main



WHERE TO SHOP

Thompson Shoes



SHOP LOCAL, SHOP WAVERLY!

W Denotes Waverly Chamber of Commerce Members

2 GUYS HOME INTERIORS **W**

1200 10th Ave. SW, Waverly
319-352-5652
www.2guyshomeinteriors.com

AJS FARM TOYS

101 E. Bremer Ave., Waverly
319-352-1214

AUSTIN'S INTERIOR & DESIGN **W**

207 W. Bremer Ave., Waverly
319-352-3296
www.austinsinteriors.com

B.E. MICK'S WOMEN'S FASHIONS **W**

123 E. Bremer Ave., Waverly
319-352-2147
www.bemicks.com

THE BEAUTY BAR

91 E. Bremer Ave., Waverly
319-483-1765
www.thebeautybarwaverly.com

BELLA NAILS & BOUTIQUE **W**

103 E. Bremer Ave., Waverly
319-352-4214
www.bellawaverly.com

B&J FLOORING **W**

112 W. Bremer Ave. Suite D, Waverly
319-352-2457
www.bandjflooring.com

BO STUDIO. 121 **W**

121 E Bremer Ave., Waverly
319-352-3211
www.bostudio121.com

CEDAR RIVER QUILTING

2673 Edgebrook Dr., Waverly
319-987-2920
www.cedarriverquilting.net

CRAWDADDY OUTDOORS, LC **W**

207 E Bremer Ave., Waverly
319-352-9129
www.crawdaddyoutdoors.com

DESIGN 360 AT DECORATING DEN INTERIORS **W**

221 E. Bremer Ave., Waverly
319-352-1379
www.decoratingden.com

ECKER'S FLOWERS & GREENHOUSE

410 5th St. NW, Waverly
319-352-1910
www.eckersflowers.com

FAREWAY STORES, INC **W**

222 W Bremer Ave., Waverly
319-352-4319
www.farewaystores.com

FIBERWORKS NEEDLEWORK SHOP

108 E. Bremer Ave., Waverly
319-352-5464

GADE'S APPLIANCE **W**

223 W. Bremer Ave., Waverly
319-352-3128
www.gadesappliance.com

GOODWILL INDUSTRIES **W**

400 Technology Place, Waverly
319-234-4626
www.visitgoodwill.com

HY-VEE FOOD STORES **W**

1311 4th St. SW, Waverly
319-352-1365
www.hy-vee.com

JIM'S SPORT SHOP

105 E. Bremer Ave., Waverly
319-352-4701
www.jimssportsshop.com

LIQUOR & TOBACCO OUTLET

622 W. Bremer Ave., Waverly
319-352-9455

LOVE & LACE **W**

220 E. Bremer Ave., Waverly
319-352-0243
www.loveandlace.net

WHERE TO SHOP

MEYER PHARMACY **W**
110 10th St. SW, Waverly
319-352-3120
www.meyerpharmacy.com

MILLER TRUE VALUE **W**
1201 4th St. SW, Waverly
319-352-1386
www.truevalue.com/waverly

THE MOOSE PATCH **W**
205 E. Bremer Ave., Waverly
319-352-5040
www.sewdear.com

NEIGHBORHOOD CLOSET **W**
1305 W. Bremer Ave., Waverly
319-352-4888
www.theneighborhoodcloset.com

NEXT GENERATION WIRELESS **W**
1810 4th St SW, Waverly
319-352-6200
www.ngwtoday.com

PHOTOGRAPHY BY CHRISTINE **W**
97 E Bremer Ave., Waverly
319-352-0001
www.photographybychristine2008.com

THE PRINTERY & NORTHWOOD PAPER & SUPPLY CO. **W**
215 W. Bremer Ave., Waverly
319-352-5822
www.printery.net

RACK 'EM UP PROMOTIONS
107 E. Bremer Ave., Waverly
319-352-9475
www.rackemuppromotions.com

THE REFINERY SALON & BOUTIQUE **W**
213 E Bremer Ave., Waverly
319-239-2288

RENEWED PURPOSE **W**
104 E. Bremer Ave., Waverly
319-830-4306

ROOT **W**
100 E. Bremer Ave., Waverly
319-290-5746
www.rootpretty.com

THE SEWING ROOM **W**
1607 Hickory Heights Dr., Waverly
319-352-6883

TENENBAUM'S JEWELRY, INC. **W**
219 E. Bremer Ave., Waverly
319-352-4112
www.tenenbaumsjewelry.com

THOMPSON SHOES **W**
113 E. Bremer Ave., Waverly
319-352-1079

TIEDT NURSERY **W**
2419 E. Bremer Ave., Waverly
319-352-0418
www.tiedtnurseryandlandscape.com

TREASURED QUILTING & GIFTS
115 W. Bremer Ave., Waverly
319-352-4355

TRINKETS & TOGS **W**
114 10th St. SW, Waverly
319-352-8029
www.larrabeecenter.org

VERIZON WIRELESS/ BMOBILE **W**
511 W. Bremer Ave., Waverly
319-486-6828
www.bemobile.com

WALGREENS **W**
320 W. Bremer Ave., Waverly
319-596-1085
www.walgreens.com

WAL-MART **W**
2700 4th St. SW, Waverly
319-352-5260
www.walmart.com

WASH HOUSE SALON & SPA
409 W. Bremer Ave., Waverly
319-352-4140

WAVERLY HEALTH CENTER GIFT GARDEN **W**
312 9th St. SW, Waverly
319-352-4120
www.waverlyhealthcenter.org

WILD CARROT **W**
215 E. Bremer Ave., Waverly
319-352-2215



Where to SHOP



We have...
CLOTHING,
FLOWERS,
& GIFTS

Love and Lace
DOWNTOWN WAVERLY
220 EAST BREMER AVE 319-352-0243

RENEWED PURPOSE

Repurposed, Rejuvenated & Recycled Treasures

We Carry Essential Oils & Wine

104 E. Bremer Avenue, Waverly • 319-830-4306

Monday, Tuesday, Wednesday & Friday: 9 a.m. to 6 p.m.

Thursday: 9 a.m. to 8 p.m., Saturday: 9 a.m. to 5 p.m. & Sunday: Noon to 5 p.m.



- Shellac Nails
- Dipping Powder
- Acrylic Nails
- Pedicures
- Manicures

Gift Certificates Available!

Jimmy's
NAILS & SPA
1810 4TH ST SW # 103, WAVERLY
(319) 352-8933

HyVee

EMPLOYEE OWNED

1311 4TH STREET SW, WAVERLY • (319)352-1365

Bakery/Specialty Cakes • Chinese
Floral Service Counter • Wine & Spirits
Catering/Dining • Fresh Meat & Seafood
Pharmacy • Fresh Produce • Salad Bar
Health Market • Dietician

*We cater to our
community's needs*



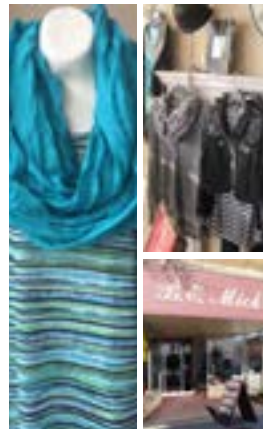
Thompson SHOES

113 East Bremer Ave, Waverly IA

319-352-1079

HOURS: Mon-Fri 9-5:30,
Thurs. 9-7pm, Sat. 9-4

GET SOCIAL
WITH US!!



B.E. Mick's, a family-owned business for over 50 years, offers you a unique selection of affordable fashions and a friendly, honest sales staff that will help you with your every need. Located in downtown Waverly, B.E. Mick's features classic and updated clothing for women of all ages as well as accessories to complete your look

UNIQUE FASHIONS - MOST NOT SEEN IN MAJOR STORES

B.E. Mick's

Missy, Missy Petite & Women's Size Fashions
DOWNTOWN WAVERLY

123 E. Bremer 319-352-2147

Hours: Mon.-Fri. 9-5:30 Thurs. night 'til 7; Sat. 9-5

www.bemicks.com



Where to SHOP



Trinkets & Togs

"The Biggest Little Thrift Store"

Store Hours:

Monday, Tuesday, Wednesday and Friday 9 a.m.—7 p.m.,
Thursday 9 a.m.—8 p.m., and Saturday 9 a.m.—6 p.m.

114 10th Street SW, Waverly • 352-8029



BEHIND EVERY PROJECT IS A

True Value



WWW.TRUEVALUE.COM/WAVERLY

WWW.THECENTREHALL.COM

Miller True Value & Just Ask Rentals

1201 4TH STREET SW, WAVERLY, IA

319-352-1386

MON-FRI: 7:30-6:00 | SAT: 7:30-5:00 | SUN: NOON-4:00



U.S. Cellular
AUTHORIZED AGENT

\$10 off the purchase of a phone

New activation or renewal required. Offer not applicable on all devices.

OR

20% off any in-stock accessory

Excludes Bluetooth®. While supplies last. See store for details.



Waterloo

1513 Flammang Dr.
319-226-3500

Cedar Falls

6301 University Ave.
319-266-2500

Waverly

1810 4th St. SW
319-352-6200

SAMSUNG Galaxy S7



Things we want you to know: Only available at Next Generation Wireless. Not valid with any other offer. One coupon per person. Coupon must be presented at the time of purchase to receive offer. While supplies last. See store for details. Offer expires 7/1/17. © 2016 Samsung Telecommunications America, LLC ("Samsung"). Samsung and Galaxy S are both registered trademarks of Samsung Electronics Co., Ltd. © 2016 U.S. Cellular NGW655

WHERE TO DRINK & DINE

The Fainting Goat Smokehouse

RESTAURANTS, DINERS & PUBS

W Denotes Waverly Chamber of Commerce Members

APPLEBEE'S GRILL **W**

2500 4th St. SW, Waverly
319-352-9240
www.applebees.com

ASIAN GARDEN

116 E. Bremer Ave., Waverly
319-352-5253

BLAKE'S BAR & GRILL

110 E. Bremer Ave., Waverly
319-483-9095

BURGER KING

927 4th St. SW, Waverly
319-352-3311
www.bk.com

CHINA BUFFET

1233 4th St. SW, Waverly
319-352-4006

DELL'S DINER

404 W. Bremer Ave., Waverly
319-352-1984

THE DEN **W**

Inside Saemann Student Center
100 Wartburg Blvd., Waverly
319-352-8303
www.wartburg.edu/dining

DUOS COFFEE & ICE CREAM **W**

805 W. Bremer Ave. Ste. 1, Waverly
319-352-2458
www.duoswaverly.com

EAST BREMER DINER **W**

117 E. Bremer Ave., Waverly
319-352-2455
www.eastbremerdiner.com

EAST CHINA

309 W. Bremer Ave., Waverly
319-483-9999

EL SOL MEXICAN RESTAURANT

3401 E. Bremer Ave., Waverly
319-352-1590

EL TAPATIO MEXICAN RESTAURANT

1810 4th St. SW, Waverly
319-352-1292

HAPPY HOUR PUB

1901 Heritage Way, Waverly
319-483-5167

HOBSON'S DAIRY QUEEN **W**

122 4th St. SW, Waverly
319-352-3256
www.dairyqueen.com

HY-VEE KITCHEN **W**

1311 4th St. SW, Waverly
319-352-1365
www.hy-vee.com

JIMMY JOHNS **W**

620 W. Bremer Ave., Waverly
319-352-2100
www.jimmyjohns.com

JOE'S KNIGHT HAWK RESTAURANT

1002 W. Bremer Ave., Waverly
319-352-2862
www.joesknighthawk.com

KONDI TOREI **W**

Lower level of the Vogel Library
100 Wartburg Blvd., Waverly
319-352-8505
www.wartburg.edu/dining

MCDONALD'S **W**

1203 4th St. SW, Waverly
319-352-6977
www.mcdonalds.com

OTHER PLACE II **W**

821 W. Bremer Ave., Waverly
319-352-4742
www.theotherplace.com

PIZZA HUT

1203 W. Bremer Ave., Waverly
319-352-5591
www.pizzahut.com

PIZZA RANCH

2020 W. Bremer Ave., Waverly
319-352-2222
www.pizzaranch.com

WHERE TO DRINK & DINE

SUB CITY

311 E. Bremer Ave., Waverly
319-352-1044

SUBWAY

517 E. Bremer Ave., Waverly
319-352-9014
www.subway.com

THE DIRTY DOG AMERICAN BAR & GRILL

1016 W. Bremer Ave., Waverly
319-352-8819
www.dirtydogwaverly.com

THE FAINTING GOAT W SMOKEHOUSE

118 10th St. SW, Waverly
319-352-2335
www.thefaintinggoatbargrill.com

THE POUR HOUSE W

111 E. Bremer Ave., Waverly
319-352-2000

TACO JOHNS

617 W. Bremer Ave., Waverly
319-352-5055
www.tacojohns.com

WATERSTREET GRILL

102 W. Bremer Ave., Waverly
319-352-1493

WAVERLY BOWL INN

915 4th St. SW, Waverly
319-352-4724
www.waverlybowl.com

WAVERLY GOLF & COUNTRY CLUB W

915 8th St. SW, Waverly
319-352-4724
www.waverlycc.com

WAVERLY SALES COMPANY W

2212 5th Ave. NW, Waverly
319-352-2804
www.waverlysales.com

WILD CARROT W

215 E. Bremer Ave., Waverly
319-352-2215

WOODEN FOOT SALOON W

98 E. Bremer Ave., Waverly
319-352-9878
www.thewoodenfootsaloon.com

ZESTY ORANGE W

Inside the W
100 Wartburg Blvd., Waverly

ZIGGY'S DOMINOS PIZZA

501 W. Bremer Ave., Waverly
319-483-9444
www.dominos.com



The Pour House



The Other Place II

Where to DRINK & DINE

Serving the Waverly Area for Over 35 Years.
821 WEST BREMER AVENUE, WAVERLY, IA | (319) 352-4742



*Join Your Friends, Wet Your Whistle,
and Enjoy Our Casual Atmosphere!*

*Mouth watering pizzas, burgers,
tenderloins, wings or any of the great
selections on our menu!*

OPEN: 11AM
MONDAY -SUNDAY



www.theotherplace.com



1901 HERITAGE WAY
WAVERLY, IA
(319) 483-5167
MON-SAT:
3:00 PM - 2:00 AM

*come in for a
WARM WELCOME*

Come shoot some pool, watch the
game and enjoy a cold beer with
friends at your favorite local pub.

Tenderloins,
Burgers,
Pizza
& More!

Find us on
[facebook](#)





HOBSON'S DAIRY QUEEN
122 4th St. SW, Waverly • 319-352-3256
Hours: M-F 10:30-10:30
Sat. & Sun. 11:00-10:30
We Accept Visa & Mastercard

**THE FAINTING
GOAT
SMOKEHOUSE**

118 10TH ST SW, WAVERLY
319 • 352 • 2335

Under NEW
management
& Chef, Phil Winkler



**FARM
TO
Fork**

**UTILIZING IOWA FARMERS
FOR 90% OF OUR MENU**

**VIEW OUR FULL MENU ON OUR WEBSITE!
WWW.THEFAINTINGGOATBARGRILL.COM**



Authentic Mexican fare the
whole family will enjoy!

**EL TAPATIO
MEXICAN RESTAURANT**

1810 4th St SW • Waverly, IA
319-352-1292

Find us on
[facebook](#)



98 E. BREMER AVE,
WAVERLY, IA
319-352-9878
OPEN 7 DAYS A WEEK,
365 DAYS A YEAR!
4PM - 2AM

**LARGEST BEER SELECTION IN WAVERLY!
BACON BLOODY MARYS
SPECIALTY COCKTAILS & MORE!**



[f](#) [t](#) WWW.THEWOODENFOOTSALOON.COM

Where to DRINK & DINE



110 E. Bremer Ave, Waverly
319-483-9095
Mon-Thurs: 2PM - 12AM
Fri: 2PM - 2 AM
Sat: 12PM - 2AM

Where good friends and good times meet great food and drink specials!

BEST TENDERLOIN IN TOWN!

Lunch, Dinner & Drinks




WE TAKE RESERVATIONS, WALK-INS WELCOME, GOOD FOR GROUPS & KIDS, TAKE OUT, CATERING AND OUTDOOR SEATING

Satisfaction Served Fresh

MON-SAT: 11 AM - 8 PM
SUN: 11 AM - 7 PM



- Hand Cut Wood Fire Grill
- Steaks Cut in House
- USDA Choice Sirloin
- American Oak on the Grill for Nice Smoky Flavor

New MENU ITEMS

Hand Cut Steaks & Pork Chops



Applebee's
Neighborhood Grill & Bar

2500 4TH ST. SW, WAVERLY • 319-352-9240
WWW.APPLEBEES.COM

BIEN VENIDOS AMIGOS WELCOME TO



MEXICAN RESTAURANT

3401 E Bremer Ave, Waverly
(319) 352-1590

LUNCH BUFFETT
11 A.M. - 2 P.M.
\$7.99 + TAX
INCLUDES DRINK

HOURS MON - THURS 11-10PM
FRI & SAT 11-11PM
SUN 11-9PM



OUR FOUNDER
Gen N' Grub

facebook

LIFE'S NOT SO BAD at the **POUR HOUSE!**

111 E. BREMER AVE, WAVERLY, IA
319-352-2000

SPECIALS DAILY, BEER GARDEN, CRAFT BEER, AND CASUAL ATMOSPHERE!



ON THE GO



DOWNLOAD OUR DOMINIO'S APP AND ORDER ON THE GO!

CARRY OUT | DELIVERY | DINE IN
WWW.DOMINOS.COM

Ziggy's Domino's Pizza
319-483-9444

501 W BREMER AVE, WAVERLY, IA

MEETING SPACES

Tendrils Rooftop Gardens
*photo by blink.images by heidi

COBBLESTONE INN & SUITES
208 E. Bremer Ave., Waverly
319-352-1311
www.staycobblestone.com

TENDRILS ROOFTOP GARDENS
312 9th St. SW, Waverly
319-352-4120
www.waverlyhealthcenter.org

WAVERLY GOLF & COUNTRY CLUB
705 8th Ave. SW, Waverly
319-352-3855
www.waverlycc.com

WARTBURG COLLEGE
100 Wartburg Blvd., Waverly
319-352-8286
www.wartburg.edu/studentcenter

THE CENTRE HALL
1201 4th St. SW, Waverly
319-352-1386
www.thecentrehall.com

WAVERLY CIVIC CENTER
200 1st St. NE, Waverly
319-352-6263
www.waverlyia.com

WAVERLY PUBLIC LIBRARY
1500 W. Bremer Ave., Waverly
319-352-1223
www.waverlyia.com/library

WAVERLY AREA VETERANS POST
1300 4th St. NW, Waverly
319-483-9287
www.waverlyvets.us



“Helping you isn't just our job, it's our passion.”

Cara, Branch Manager

Any financial institution can cash your check. You need one that knows your face, saves you money and offers genuine guidance.

Discover the Veridian difference today.
Stop by our Waverly branch just north of Walmart.



Accounts · Loans · Investments · Insurance · Guidance

WHERE TO STAY



Cedar Bend Park

CAMPGROUNDS

Campgrounds are open May 1 through October 31. The park gate is closed to vehicle traffic after October 31, but remains open to foot traffic. Hunting is allowed from November 1 to January 10 at Cedar Bend, North Cedar and North Woods Parks. The parks can also be used by cross-country skiers, snowshoers, birders, etc. during the winter months. Each park has electric and tent camping sites, depending on user preference. There are no designated sites and campsites are available on a first-come, first-serve basis. Reservations are not taken and the sites feature self-registration at the park kiosk. Sites contain 20 to 30 amp outlets. **For a complete listing of Bremer County camping facilities visit www.co.bremer.ia.us.**



Rock River Resort

1148 230th Street, Waverly, IA
319-352-3200
www.rockriverkennelsia.com



4-Paw Accommodations at Rock River Resort Doggie Day Care & Boarding

We provide your dog with a first class vacation while you vacation!
Call to make your reservation TODAY!

Chad Johnson - Dog Trainer & Canine Specialist
319-231-5157

Camping is available at four county parks:

CEDAR BEND PARK

1267 250th St., Waverly

Cedar Bend Park offers a variety of recreational opportunities that include four miles of trails that wind through forests, fields and along the river's edge. Three picnic and playground areas provide day-use recreation. There are three sand volleyball courts and horseshoe pits at the park, as well as two shelters with electricity.

ALCOCK PARK

1171 Midway Ave., Frederika

Canoers and fishing enthusiasts obtain access to the Wapsipinicon River through the park's shoreline or the boat ramp. The campground has over fifty electrical sites and two wells for drinking water.

NORTH CEDAR PARK

1163 140th St., Plainfield

North Cedar Wildlife Area (98 acres) joins North Cedar Park on the west side. The area includes timber and old river oxbows. It is open to hunting, fishing, hiking and other outdoor activities.

NORTH WOODS PARK

1249 Yuma Ave., Sumner

Fishing is available at the two ponds in the Wilson Grove Wildlife Area, a short walk from the campground.

WHERE TO STAY

W Denotes Waverly Chamber of Commerce Members

HOTELS

AMERICA'S BEST VALUE INN

1900 Heritage Way, Waverly
319-352-5330

COBBLESTONE INN & SUITES **W** STAR MOTEL

208 East Bremer Ave., Waverly
319-352-1311
www.staycobblestone.com

3303 E. Bremer Ave., Waverly
319-352-4434

COMFORT INN **W**

404 29th Ave. SW, Waverly
319-352-0399
www.choicehotels.com

SUPER 8 MOTEL **W**

301 13th Ave. SW, Waverly
319-352-0888
www.super8.com/waverly



208 East Bremer Avenue, Waverly, IA 50677
(319) 352-1311 | www.staycobblestone.com



RESTAURANT & LOUNGE

STAR MOTEL
3303 E Bremer Ave, Waverly, IA
(319) 352-4434



www.choicehotels.com

404 29TH AVE SW, WAVERLY, IA | (319) 352-0399

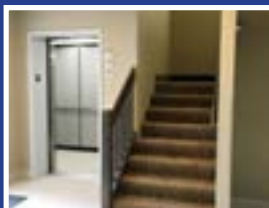
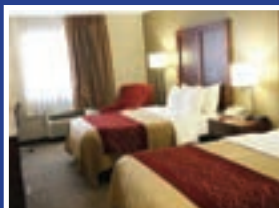


www.super8.com/Waverly

301 13TH AVE, WAVERLY, IA | (319) 352-0888

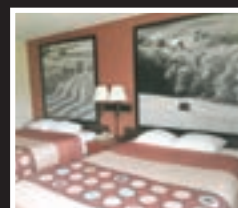
NEWLY RENOVATED ROOMS & NEW ELEVATOR

Hot Breakfast
Indoor Pool & Spa
Fitness Center
Sauna
Free Wi-Fi
Pet Friendly



NEWLY UPDATED ROOMS

Superstart Breakfast
Refrigerator
Microwave
Free Wi-Fi
Free truck, bus or RV parking
Handicapped-Accessible



Where to WORSHIP



VINEYARD CHURCH
WORSHIP COMPASSION DISCIPLESHIP

*Service Every Sunday Morning at 10 a.m.
Wednesday Meal at 5:30 p.m.*

319 W Bremer Ave, Waverly IA (319) 352-2656
www.waverlyvineyard.com



St. Paul's
LUTHERAN CHURCH & SCHOOL

301 1st St NW, Waverly, IA
319-352-3850
life@stpaulswaverly.org

WORSHIP

SEPTEMBER–MAY

Sat. 5:30pm

Sun. 7:30, 8:30 & 11am

JUNE–AUGUST

Sat. 5:30pm

Sun. 7:30, 8:30 & 10:30am

EDUCATION

AUGUST–MAY

**St. Paul's
Lutheran School**
Preschool – 6th Grade

**Parish education
for all ages**

STPAULSWAVERLY.ORG

St. John Lutheran Church

415 4TH ST. SW, WAVERLY

319-352-2314 | st.johnlutheranchurch@q.com



openbiblechurch

helping people take their next step towards Christ

*No matter where you are in life,
there is a place for you at
Waverly Open Bible Church!*

*Discover what we have to
offer you & your family.*

www.openbiblewaverly.com

FIRST BAPTIST CHURCH OF WAVERLY

211 3rd St. SW
(one block east of Dairy Queen), Waverly, IA

319-352-2687

Pastor Dan Eloë
fbcwaverly@gmail.com

www.fbcwaverly.com



1013 E. Bremer Avenue, Waverly
319.352.2038



Where to **WORSHIP**

REDEEMER LUTHERAN CHURCH

www.redeemerwaverly.org

Sunday Summer Worship: 9:30 a.m. (Fellowship 9:00-11:00 a.m.)
Saturday Worship: 5:30 p.m.
Sunday Worship: 8:00 a.m. Traditional, 10:30 a.m. Contemporary
Sunday School: 9:15-10:15 a.m.
Wednesday Night Supper: 5:00-6:15pm
Confirmation: 6:30-8:00 p.m.

2001 West Bremer Ave, Waverly, IA • 319-352-1325

ST. MARY CATHOLIC CHURCH

Masses: Sat. 5:15pm, Sun. 8am & 10am.



2700 Horton Rd (1st St NW), Waverly
319-352-2493 www.StMarysFamily.com



2 miles west of Waverly on Hwy 3
WWW.RETRIEVINGFREEDOM.ORG

Find us on
facebook

Consider a contribution to RFI!
Service Dog Training for Veterans & Children with disabilities



WARTBURG COLLEGE



WARTBURG COLLEGE

Wartburg College is a private residential college with an enrollment of about 1,600. The college's 15 music ensembles - which include the internationally recognized Wartburg Choir, Castle Singers chamber ensemble and Wind Ensemble offer performances on



campus and in the community. Theater buffs will appreciate productions by the Wartburg Players, a student-run theater organization. The college's signature event is the nationally renowned Christmas with Wartburg, a four-concert series with performances in Waverly and West Des Moines. Wartburg sporting events also are great community-building opportunities. The college's teams are consistently ranked among the top overall NCAA Division III programs with 12 national team championships in wrestling and eight in women's track and field. In recent years, several other teams have advanced to post-season play, including appearances in NCAA tournament competition.

WARTBURG-WAVERLY SPORTS & WELLNESS CENTER (THE W)

Built in 2008, the Wartburg-Waverly Sports & Wellness Center, located near Walston-Hoover Stadium, houses the college's athletic department, indoor

intercollegiate facilities, and health and recreational amenities open to the public. Community memberships are available.

The facility includes:

- The 1,800-person capacity Levick Arena.
- A 200-meter track.
- A 6,500-square-foot fitness center with climbing wall.
- A natatorium with a six-lane, 25-yard pool; recreational swimming with a zero-depth entry area; waterslide; vortex pool; hot tub; and sauna.
- Six multipurpose courts for tennis, basketball, volleyball and more.



DEMOGRAPHICS & SERVICES



DEMOGRAPHICS

GEOGRAPHIC LOCATION

Waverly is located in Northeast Iowa on the banks of the Cedar River approximately 80 miles west of the Mississippi River and 60 miles south of the Iowa/Minnesota border.

POPULATION

2015 - 10,066
 2012 - 10,035
 2010 - 9,874
 2000 - 8,968
 1990 - 8,539
 1980 - 7,205

ALTITUDE

915 Feet

CLIMATE

Waverly's climate is continental in nature, characterized by four distinct seasons and a rather wide variation in temperature and precipitation.

AVERAGE TEMPERATURE

Winter: 19.4 degrees F
 Summer: 70.2 degrees F

Leslie, Collins, & Gritters, PLLC
 Attorneys at Law

General Practice including but not limited to:

- Real Estate
- Wills, Trust & Estate Planning
- Probate
- Personal Injury
- Collection & Foreclosure
- Bankruptcy
- Domestic Relations & Family Law
- Tax Preparation
- Trial & Litigation



**Free initial consultation for:
 Bankruptcy and Personal Injury**
 Hyatt Legal Plan Participant

303 1st Ave NE, Waverly, IA
319-352-1637
www.waverlylawyers.com

LOCAL Lenders. LOCAL Decisions.

MEMBER FDIC **WAVERLY** 



Scott Whitcome NMLS #658560	Jeff Meyers NMLS #658478	Brittney Diercks NMLS #1436568	Bill Roths NMLS #539883
---------------------------------------	------------------------------------	--	-----------------------------------

At State Bank, our lending officers have deep roots in the community. With us, you get local decisions from your friends and neighbors. **Let us give you piece of mind and little wait time!**

NOW AVAILABLE...Apply Online!

STATE BANK
 WEALTH MANAGEMENT & BANKING

 Visit us online!
www.statebankia.com  Like us on Facebook!

DEMOGRAPHICS & SERVICES

DEMOGRAPHICS

AVERAGE ANNUAL RAINFALL

32.9 inches

AVERAGE ANNUAL SNOWFALL

35.5 inches

DISTANCE TO MAJOR CITIES

Des Moines, IA - 132 miles
Minneapolis, MN -223 miles
Chicago, IL - 291 miles
Omaha, NE - 264 miles

WORKFORCE

One of the Waverly area's most valuable assets is its high quality work

force. The Waverly area benefits from a population of over 240,000 within a 45 minute commuting radius, setting the stage for a generous and diverse pool of available labor.

An Educated Workforce: Over 2/3 (68.7%) of the employed residents in the labor shed area have some level of education/training beyond high school. The town also has one of the lowest unemployment rates in Iowa. Area job listings can be found at www.waverlyia.com/careers

ABOUT WAVERLY

Waverly's population is 10,066 and is part of the Waterloo-Cedar Falls metropolitan statistical area. Waverly's sister city is the German town of Eisenach, home of the Wartburg Castle.

POLICE/FIREDEPARTMENT

Waverly's police department consists of 18 officers and the fire department is volunteer with 30-40 citizens.



Waverly Main Street



Wall to Wall

WE'VE GOT YOU COVERED

B & J

FLOORING, INC

112 W. Bremer Ave. Suite D,
Waverly, IA
Office: 319-352-2457
Fax: 319-352-5743
Brad & Janean Young
Cells: 319-231-6203
or 319-215-0835



DEMOGRAPHICS & SERVICES

EDUCATION

- **Wartburg College**, founded in 1852, is a private four-year liberal arts college of the Lutheran Church (ELCA) and is nationally recognized for community engagement. The college offers over 50 majors, pre-professional programs and certificate programs leading to the bachelor's degree. Wartburg has been ranked in The Princeton Review's rankings of "Best Midwestern Colleges", as well as in U.S. News and World Report's annual rankings of "America's Best Colleges."
- **Waverly-Shell Rock Community Schools** are located within the communities of Waverly and Shell Rock. The district is comprised of seven schools including five elementary schools, a middle school and a high school. The district strives "to create a passion for learning that will sustain students for a lifetime". With outstanding faculty and engaged students, W-SR Community Schools have consistent high test scores, and are highly regarded nationally, earning a bronze medal from the U.S. News and World Report. The school district has also been an early technological adopter using the one-to-one iPad

program and implementing a new engineering curriculum.

- **St. Paul's Lutheran School** is committed to providing quality education in an environment where Christian faith is taught, learned and lived.

RENEWABLE ENERGY

Waverly is a leader in the use of renewable energy. In 1993 Waverly Utilities became the first public power system in the midwest to own and operate wind generation. Waverly Utilities has set a goal known as "20 by 20-20" which means they are striving to generate 20% of its energy with renewable sources by the year 2020.

HEALTH CARE

Waverly Health Center is a 25-bed critical access hospital in Waverly. WHC provides inpatient care, ambulatory surgery, outpatient services, speciality clinics and emergency room care to area residents. More than 50 health care providers and visiting specialists care for patients at WHC, allowing area residents local access to specialized care.

NEWSPAPERS

The Waverly Newspapers is published twice weekly. The Bremer County Independent and Super Shopper on Tuesdays and the Waverly Democrat on Thursdays, total distribution is 12,000 homes.

RADIO

KWAY (1470 AM) plays classic country music. Y99.3 plays current hits and serves Waverly, Cedar Falls and Waterloo. KWAR (89.9 FM) is Waverly's student station.

CHURCHES

There are nearly two dozen churches which represent: Baptist, Catholic, Community, Episcopal, Lutheran, Methodist, Nazarene, Open Bible and United Church of Christ. See pg. 24-25

AIRPORT

Waverly Municipal Airport, completed in 1967, is located NW of Waverly on Business Route 218. It offers a runway, flight instruction, aircraft rental and fuel sales.

WAVERLY NEWSPAPERS

311 W Bremer Ave, Waverly • 319-352-3334 • www.waverlynewspapers.com



Serving Bremer and Butler counties with local news, sports and classifieds.



NEWS ON THE GO!
CHECK US OUT ON FACEBOOK,
TWITTER AND YOUTUBE



Demographics & SERVICES

GARRY'S TIRE CAR CARE CENTER

2003 E. Bremer Ave. Waverly
319-352-5552

- Tires • Alignment • Brakes • Shocks & Struts
- Exhaust • Tune-Ups • Coolant System Services
- Transmission Flush • Fuel System Cleaning



*Celebrating over 42 years
of pleasing people!*



Dales Service, Inc.



Towing • Brakes
Alignments • Suspension Tune-Ups • Exhaust Systems
Exhaust Systems • Diagnostics General Maintenance
Now Offering 24 Hour Towing
319-230-3081

119 4th St. S.W. • Waverly
319-352-3574 • Troy Carolus, Owner



Classic Cleaners

97 West Bremer Ave, Waverly, Iowa
319-352-4677
Steve & Sherri Dralle, Owners

Hours: M-F 7:30-5:30, SAT 8-Noon

- Full Service Dry Cleaning
- Wedding Apparel
- Alteration Department
- Draperies
- Leather & Suede
- Shirts
- Convenient Drive-Up Window

RAMKER Construction & Supply, Inc.



CALL NOW!
Scott Ramker
415-0702

Residential & Commercial Construction • Kitchen & Bath Remodeling
Door & Window Replacement • Room Additions • Design Work
Roofing • Custom Homes • Building Lots

220 8th Avenue S.W. • Waverly, Iowa • 352-4286 • builders@ramker.com

www.ramker.com

MINI STORAGE

Storage for Small Residential to Large Commercial
Low Monthly Rates • Security Fenced & Lighted
RV & Boat Storage Inside or Out
Climate Controlled Offered • 7 Day Access
On Site Office • Two locations • Security cameras

220 8TH AVE SW, WAVERLY, IA

319-352-4286

www.ramkerstorage.com



Whether you're here for a visit or here to stay—
First National Bank is here for all your financial needs.



CHECKING



MORTGAGE



SMALL BUSINESS



Serving You First

www.myfnbbank.com

Cedar Falls: 319.266.2000

Plainfield: 319.276.4469

Waverly: 319.352.1340



JERRY ROLING

CHEVROLET

CHECK OUT OUR *Jerry Roling Collision Center*

JerryRoling.com
319-352-1650 OR 800-555-3779

CHEVROLET CERTIFIED SERVICE

FREE ESTIMATES!
When You Need It!

JERRY ROLING
1775 4TH ST. SW, WAVERLY, IA

CHEVROLET

BUICK

DISCOVER BREMER COUNTY



BREMER COUNTY

Bremer County is a county located in the state of Iowa. As of the 2010 census, the population was 24,276. Its county seat is Waverly. The county was named for Fredrika Bremer, a Swedish traveler, poet, and author. Bremer County is included in the Waterloo-Cedar Falls, IA Metropolitan Statistical Area. Bremer County is made up 8 cities: Denver, Frederika, Janesville, Plainfield, Readlyn, Sumner, Tripoli and Waverly. It also includes 4 unincorporated communities and is divided into 14 different townships.

DENVER

**Denver City Hall,
100 Washington St., Denver
319-984-5642**

www.cityofdenveriowa.com

Called the Mile Wide City, Denver is known for its excellent school system, the progressive vision of its leaders and the opportunities for growth it offers both in the public and the private sectors. It has its own grocery store as well as a vibrant main street. Five council members and a mayor lead the city. The town's annual celebration, Denver Breakaway Days, usually takes place the third weekend of August. There were 1,780 people, according to the 2010 U.S. Census.



Cyclone City Park, Denver, IA

STERLING TOPS



200 SOUTH STATE STREET, DENVER, IA
319-984-5712

**Custom Countertops in Laminate,
Solid Surface, Granite, and Quartz**

GOLF CARS

SALES • SERVICE • RENTALS TRAILERS • BATTERIES

**NEW &
USED
YAMAHA
CLUB
CAR**



Serving your community
with quality cars & service
for over 45 years.

**RUDY'S
SALES & SERVICE
319-984-5627
DENVER, IOWA**

DISCOVER BREMER COUNTY

Brother's Market, Denver, IA

DAVIK'S AUTO BODY REPAIR

SATISFACTION GUARANTEED



Commitment to Quality over 40 years

300 Transit St., Denver, IA 50622
319-984-5995

"Your Vehicle Deserves the Best!"

Provides homeowners with valuable products, stable rates and most importantly prompt, personal service from local people.



First Maxfield Mutual
Insurance Association

Since 1860



FARMUTUAL
Insurance

www.firstmaxfield.com
Denver, IA
800.366.7014 or 319.984.5255



#1 ROADSIDE ASSISTANCE FOR MOTORCYCLES
UNITED STATES • ALASKA • CANADA • HAWAII

1-800-999-7064

401 S. STATE ST., DENVER • WWW.MTS-TOWING.COM
INFO@MTS-TOWING.COM

- Giftware
- Specialty Wines and Beers
- Kodak Photo Kiosks
- Greeting Cards
- We accept most insurances

DENVER DRUG AND PHOTO
Care you can trust.

340 S. State St., Denver, Iowa 50622 319-984-5691
denverdrugandphoto.com

U.S. Cellular
AUTHORIZED AGENT

COVERAGE FROM
the Middle of Anywhere™
to the middle of
Waverly

U.S. Cellular® offers 4G LTE™ coverage where you least expect it.



SAMSUNG Galaxy S7



SAMSUNG Galaxy S7 edge

U.S. Cellular

CALL FOR STORE HOURS.

Newy's Wireless
1022 Skyler Street Suite B
Denver, IA 50622
319-240-7150

Up and Running Electronics
205 S. Elm Street
Cresco, IA 52136
563-547-2737

4G LTE not available in all areas. See uscellular.com/4G for complete coverage details. 4G LTE service provided through King Street Wireless, a partner of U.S. Cellular. LTE is a trademark of ETSI. ©2016 U.S. Cellular NoContract_CoverageBlue_Print_DI_6x9

2498711

DISCOVER BREMER COUNTY



The Sweet Spot, Denver, IA

Duane's
Barber Shop

Quick & Stylish cuts

103 MAIN ST., DENVER, IA
319-984-5582

Find us on **facebook**

THE Sweet SPOT

Ride the bike trail for a sweet treat!
Serving soft serve ice cream, ice cream cookie sandwiches, Cyclones, and more!

**Open seasonally
March until October**
100 S State Street, Denver, IA
319-406-7606

Where we treat you like family

Store Specials plus Weekly Savings!

Your neighborhood store and a whole lot more

Whether you live here, work here, are passing through or spending the day.

Brothers MARKET

**Fresh Produce
Quality Meats
Frozen Favorites
Deli Items
Dairy & Cheeses
Wine, Spirits & Fun
Grocery Goods
General Merchandise**

Find us on **facebook**

Monday - Saturday 8 a.m.-9 p.m. | Sunday 9 a.m.-6 p.m.
1022 Skyler Street, Denver, IA | 319-406-0004 | www.shopbrothersmarket.com

DISCOVER BREMER COUNTY

JANESVILLE

**Janesville City Hall,
227 Main Street, Janesville
319-987-2905
www.janesvilleia.com**

Janesville, the first town platted in Bremer County in 1849, is small in size, but large in opportunities and abundant with friendly people. The population, according to the 2010 Census is 930 people. It is governed by a mayor and a five-member city council. Named after its founder's wife, Jane Barrick, today Janesville is a rural community with tree-lined streets

nestled high along the rippling water of the Cedar River. It's bordered by rich farmland and forest green fields, plus Highway 218 (Avenue of the Saints which runs between St. Paul and St. Louis). Local people are proud of their town, which has several churches, a library, lumberyard, eating establishments, and numerous other factories and businesses. It is small enough to be "homey" but large enough in organizations so that there is something for everyone. Its excellent quality Pre-K – 12 school has graduated outstanding talents and is

staffed by caring, dedicated teachers. The Janesville Community is forward-looking and planning for future businesses and homeowners through long-range goals. The town's celebration is called Janesville Days and happens in late July.

READLYN

**Readlyn City Hall
128 Main Street, Readlyn
319-269-6753**

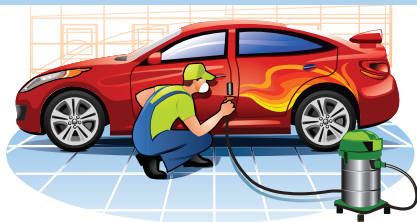
What do you expect from a town in Iowa that prides itself on an atmosphere

Janesville, Iowa



DELUXE AUTO BODY

218 7TH STREET, JANESVILLE, IA



319-987-2530

**Tim Nisius
319-290-9940**

Cliff's Place

**BREAKFAST • LUNCH
DINNER**

**DAILY SPECIALS
MONDAY - SATURDAY**



319-276-3114 • 1404 Easton Ave, Horton, IA

DISCOVER BREMER COUNTY

Readlyn City Park, Readlyn, Iowa



where 851 friendly people co-exist with one old Grump. Welcome to Readlyn, a town that offers the beauty of northeast Iowa with its surrounding fertile fields, clean air and welcoming community by the Wapsipinicon River. The spirit and pride of the residents is evident in Readlyn, which boasts great quality of life. Friendly, educated, community-minded people are Readlyn's most valuable resource.

The town was named after a representative from the Townside Company, which came to the area in 1903 to build a station for the Chicago Great Western railway line that was to connect Waverly to Oelwein. Today, Readlyn is governed by a five-member city council and a mayor and has 808 residents, according to the 2010 Census. The town's annual celebration is called, appropriately, Grump Days and it takes place in June.

Downtown Readlyn, Iowa



Serving the communities of
Clarksville, Frederika,
Plainfield, Shell Rock &
Tripoli



***Internet speeds up to 100 Mbps**

***Over 230 channels of Digital TV**

***Local Phone Service**

***i wireless w/4G LTE**

***Save when you bundle!**

Providing advanced telecommunications services to residents & businesses in NE Iowa for over 100 years!

www.Butler-Bremer.com

319-276-4458

READLYN MUTUAL INSURANCE ASSOCIATION

Serving Communities and Farms since 1875



readlynmutual.com

234 Main Street, Readlyn, IA 50668
319-279-3893 • 800-663-7634



Quality Distributors Inc.

DISTRIBUTORS OF



Brian L. Meyer,
CCA

- High Quality Liquid Fertilizers
- Seed Safe Starters & Foliars
- Nitrogen Solutions
- Crop Protection • Soil Testing
- Custom Ground & Ariel Application

101 Main Street, Readlyn, IA 50668 • 319-279-3555

DISCOVER BREMER COUNTY

PLAINFIELD

City of Plainfield

604 Main Street, Plainfield

319-276-3449

Plainfield has an estimated 436 residents, according to the 2010 Census. It is governed by a five-member city council and a mayor. In 2016, the town marked its 150th anniversary during its annual celebration in July.

The town offers a friendly and safe atmosphere with a great school system and a quality of life, amply captured in the city's motto, "The Heart of a Rural Community."

The town's annual celebration Plainfield Days happens the second weekend in July.

FREDERIKA

Frederika Town Hall,

111 3rd St., Frederika

319-275-4579

Frederika is a city in Bremer County, Iowa. The population was 183, according to the 2010 census. It is named for Fredrika Bremer (note different spelling), the Swedish author, for whom the surrounding

county was also named.

Frederika is led by a mayor and the city council. The town's annual celebration is in early July, coinciding with the 4th of July celebration.

Frederika is known for the hospitality of its people and the July 4th fireworks.

Frederika Post Office, Frederika, Iowa



Plainfield Downtown, Plainfield, Iowa



DEL'S AUTO REPAIR INC.

2306 Piedmont Ave • Knittel Corner READLYN

60 years of auto services

- Foreign & Domestic • Body Repair & Alignment
- Electronic • Diagnostic • 24 Hour Towing

319-279-3785

**RTC Communications provides
YOUR Technology needs for
YOUR lifestyle**

- 100% Fiber Optic Network (Gigabit capable)
- Providing Quality - State of the Art Technology since 1907 for our community
- Telephone - Internet - Digital Television
 - Medical Monitoring Alert

**121 Main Street, Readlyn, IA
(319) 279-3375
Office Hours:
M-F 8AM-4:30PM**

RTC Communications

www.readlyntelco.com



HOPPERS • TANKERS • VANS



*We're here for your
trucking needs.*

Readlyn, IA *In Business Since 1945*
Denny - Rod - Barry **319-279-3371**

DISCOVER BREMER COUNTY

TRIPOLI

Tripoli City Hall
303 South Main, Tripoli
319-882-4801

Tripoli is known as the "Home of Sweet Marsh," a wildlife area of 2,855 acres of pristine plant and animal species.

Known for its environmentally minded people, Tripoli today has 1,313 residents, according to the 2010 Census. Proud of a friendly downtown, the Tripoli school system and the 2,855 acre Sweet Marsh. Where community means dedicated volunteers, a tribute

to veterans, five area churches and small town hospitality.

Agriculture is a major economic driver & health providers offer first-class care. Many recreational opportunities contribute to a fun, safe and friendly environment.

SUMNER

Sumner City Clerk
105 E 1st St, Sumner
563-578-3242

www.mysumneriowa.com
Nestled in Northeast Iowa, Sumner is located straddles

Bremer and Fayette counties, along Highway 93.

Its motto, "A city with a future," captures the spirit of this quaint town.

Established in 1870, today its population numbers 2,028, according to the 2010 U.S. Census. The town is governed by a five-member city council and a mayor.

Its annual celebration, Sumner Days, takes place on the third weekend in July.

Sumner features amenities that are standard in big city

living, but come with a small town feel. The community prides itself on its family-friendly environment, newly reconstructed hospital, a modern public library, an aquatic center, a local grocery store, and many mom and pop shops on Main Street. Sumner is committed to education, business growth and opportunities for all.

Sweet Marsh, Tripoli, Iowa



Downtown, Sumner, Iowa



WALVATNE FLOOR COVERING

The Store that Covers your Floor



26 years in Business

112 East 1st Street, Sumner, IA

563-578-5412

WALVATNEFLOORCOVERING.COM

KuK Clothing

105 WEST FIRST STREET, SUMNER, IA 50674

563-578-3235

Clothing and accessories for infants & women

CHECK OUT OUR SELECTION OF

Essential Oils, Soaps,
Purses & Accessories!



IMPORTANT INFORMATION

IMPORTANT PHONE NUMBERS

Emergency	911
Road Conditions	511
Iowa State Patrol	(319) 277-4761
Bremer County Sheriff	(319) 352-5400
Waverly Police Department	(319) 352-5400
Waverly Fire Department	(319) 352-5521

MEDICAL ASSISTANCE

Waverly Health Center	(319) 352-4120
Emergency	(319) 352-4901
Walk -in Clinic	(319) 483-1400

AREA INFORMATION SERVICES

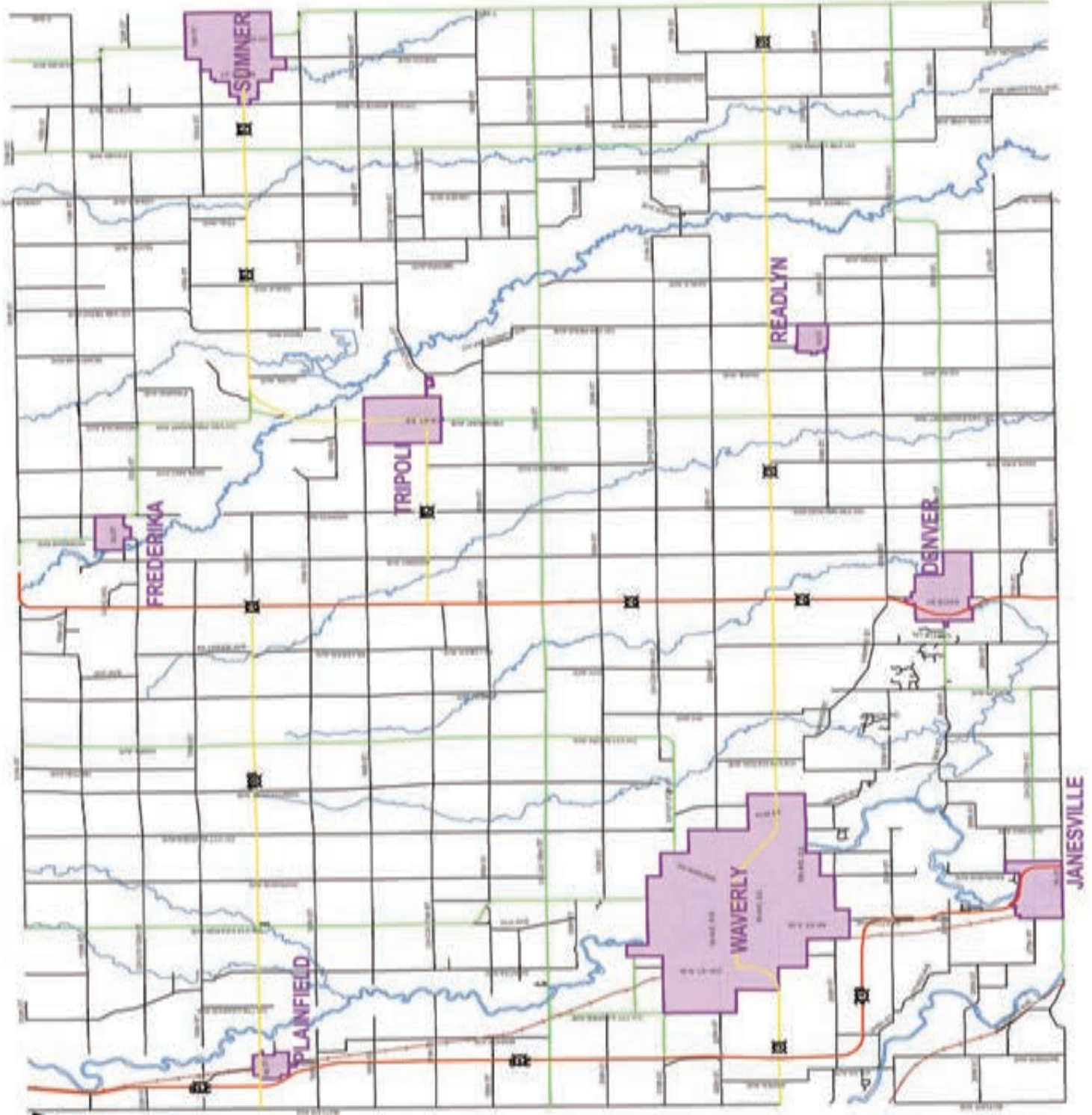
Bremer County Courthouse	(319) 352-0340
Waverly Chamber of Commerce	(319) 352-4526
Waverly City Hall	(319) 352-4252
Waverly Utilities	(319) 352-6251
Waverly Public Library	(319) 352-1223



ADVERTISING INDEX

Applebee's Grill	20	Happy Hour Pub	19	St. Paul's Lutheran Church	24
B&J Flooring, Inc	28	Hobson's Dairy Queen	19	Star Motel.....	23
B.E. Mick's.....	15	Hy-Vee Food Store	15	State Bank.....	27
Blake's Bar & Grill	20	Jerry Roling.....	31	Sterling Tops	32
Brother's Market.....	34	Jimmy's Nails & Spa.....	15	Sub City	20
Bulter-Bremer Communications... 36		Kaiser-Corson Funeral Home	7	Super 8 Motel	23
Classic Cleaners	30	KnK Clothing.....	38	The Fainting Goat Smokehouse..... 19	
Cliff's Place	35	Leslie, Collins & Gritters.....	27	The Other Place	19
Cobblestone Inn & Suites	23	Love & Lace	15	The Pour House	20
Comfort Inn.....	23	Miller True Value.....	16	The Sweet Spot.....	34
CrawDaddy Outdoors.....	8	MTS Motorcycle.....	33	The Wooden Foot Saloon	19
Cuna Mutual	43	Nagle Signs Inc	9	Thompson Shoes.....	15
Dales Service, Inc.....	30	Newy's Wireless	33	Trinkets & Togs	16
Davik's Auto Body	33	Open Bible Church	24	U.S. Cellular.....	16
Del's Auto Repair	37	Quality Distributors Inc	36	Veridian Credit Union	21
Deluxe Auto Body	35	Ramker Construction.....	30	Vineyard Church.....	24
Denver Drug	33	Readlyn Mutual Insurance	36	Walvatne Floor Covering.....	38
Duane's Barber Shop	34	Redeemer Lutheran Church.....	25	Waverly Golf Course.....	7
Edward Jones.....	4	Renewed Purpose	15	Waverly Health Center.....	44
El Sol Mexican Restaurant.....	20	Retrieving Freedom	25	Waverly Newspapers	29
El Tapatio Mexican Restaurant... 19		Rock River Resort	22	Waverly Utilities	2
First Baptist Church	24	RTC Communications.....	37	Wittenburg Truck Line, Inc	37
First Maxfield Mutual.....	33	Rudy's Sales & Services.....	32	Wolf Creek Tattoos	6
First National Bank.....	31	St. John's Lutheran Church.....	24	Ziggy's Domino's Pizza	20
Garry's Tire	30	St. Mary Catholic Church	25		

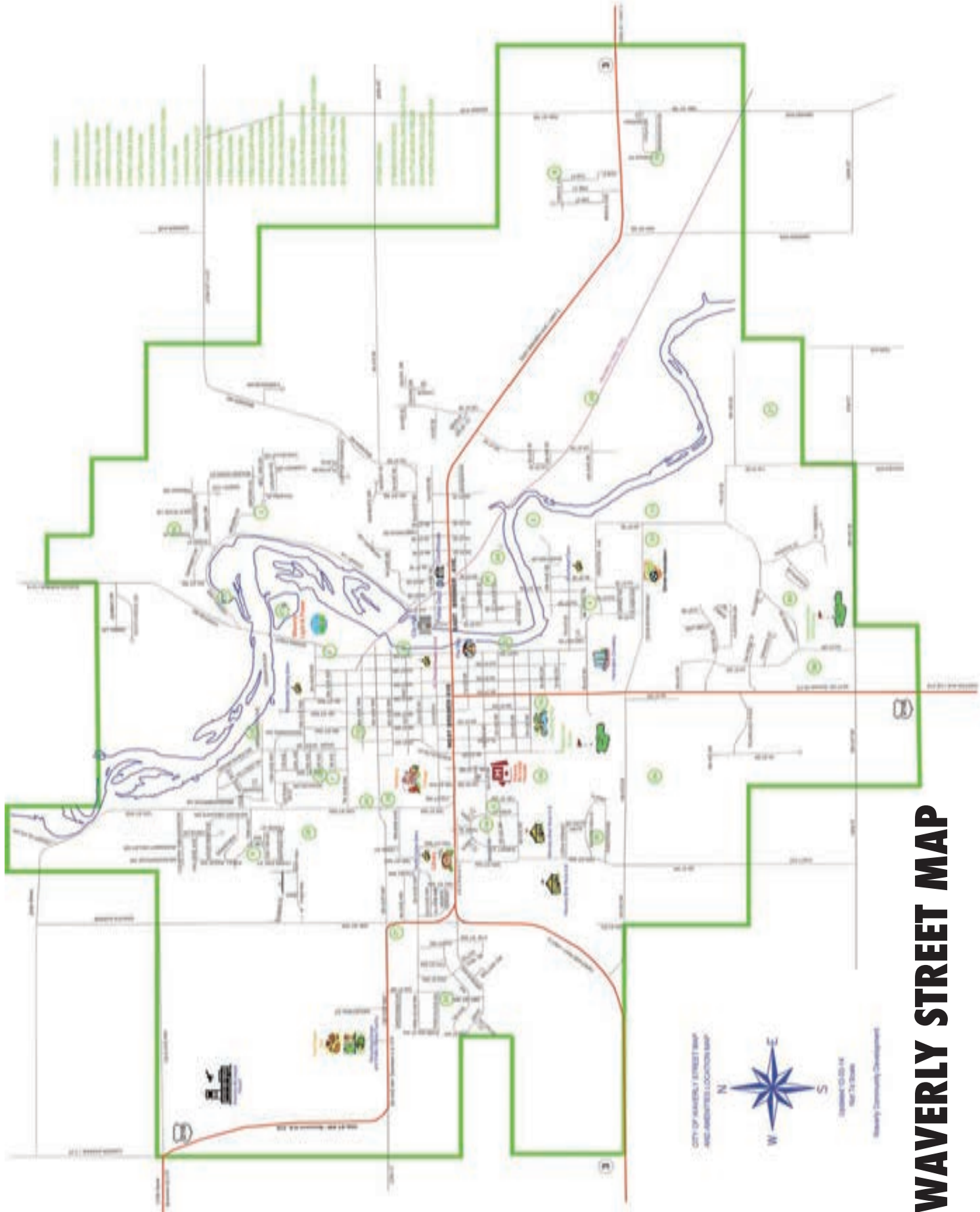
Bremer County Street Map



Legend

- Cities
- Rivers / Streams
- Railroads
- Local Roads
- County Hwy
- US & State Hwy
- State Hwy
- US Hwy

™ Bremer County GIS Department



WAVERLY STREET MAP

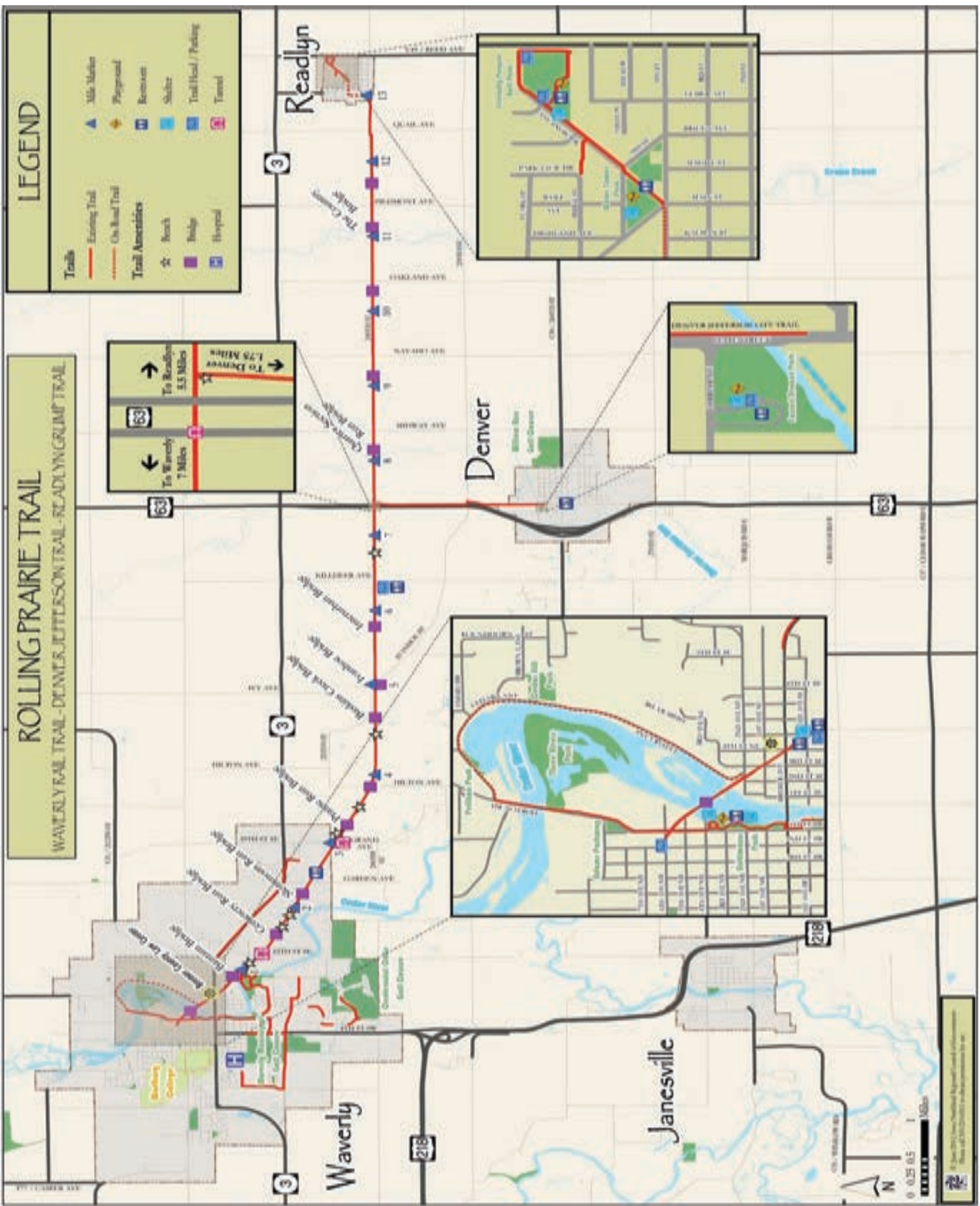
ROLLING PRAIRIE TRAIL

WAVELY RAIL TRAIL - DENVER, JEFFERSON TRAIL - READLYN GRUMP TRAIL

LEGEND

- Trails**
- Existing Trail
 - On Road Trail
- Trail Amenities**
- Mile Marker
 - Playground
 - Restroom
 - Shelter
 - Trail Head / Parking
 - Tunnel
- Trail Amenities**
- Beach
 - Bridge
 - Hospital

← To Waverly 7 Miles
→ To Readlyn 1.75 Miles
→ To Denver 3.5 Miles



0 0.25 0.5 1 Miles
 © 2013 Waverly, Colorado Department of Public Health and Safety
 Prepared by Waverly, Colorado Department of Public Health and Safety

A commitment to community.



At CUNA Mutual Group, we understand our success is dependent on doing the right thing for our customers, our communities, and the environment. We are resolute in this commitment and look forward to strengthening our connections to customers and the community in the years to come.



Common Purpose. Uncommon Commitment.

1000000-0213WavCham
© CUNA Mutual Group, 2016 All Rights Reserved.

2000 Heritage Way • Waverly, IA 50677
www.cunamutual.com



BIG CITY
CARE, SMALL TOWN
COMFORT

Waverly Health Center's breadth and depth of services make it easy for you to remain close to home, avoiding the stress of traveling for your care.

**We're big enough to care for you,
but small enough to care about you.**

We know you'll be pleasantly surprised by our friendly, professional staff and comfortable setting.

WAVERLY HEALTH
— C E N T E R —

(319) 352-4120 | WaverlyHealthCenter.org