



**William D. Werger**  
Director of Community Development  
City Attorney  
Email: [wdwerger@ci.waverly.ia.us](mailto:wdwerger@ci.waverly.ia.us)

200 1<sup>st</sup> Street NE  
Waverly, IA 50677  
P. 319-352-9210  
F. 319-352-5772

February 28, 2020

**NOTICE TO BID**  
**Waverly, Iowa Streetscape Tree Project 2020**

Prospective Bidders

Attached is a Bid Package for a project with the City of Waverly for the installation of 19 street trees within our downtown streetscape.

The trees are specified as being installed using a specific method designed by GreenBlue Urban, Inc. of Knoxville, Tenn. For those bidders who have not installed trees using this method, the city is offering an instructional presentation on March 6<sup>th</sup>, 2020 at 10AM at the Waverly Civic Center at the address listed above. Attendance is mandatory unless excused by the City.

Bids shall be delivered to the Economic Development Office at the address listed above by March 20, 2020 at 10AM.

Any questions on the bid package can be directed to me at the office phone and email above or Larry Kurtz, Align Architecture & Planning, 319-233-1163 or [lkurtz@alignplc.com](mailto:lkurtz@alignplc.com).

Sincerely,  
  
William D. Werger

Cc: Bid Package

# **NOTICE TO BID**

## **Waverly Streetscape Tree Project 2020**

### **Section One: General Information**

**City = The City of Waverly, Iowa**

#### **1.1 Purpose of the Solicitation for Bid**

The City is requesting bids for tree and tree growing pit installation along Bremer Ave. in Waverly. The area covered is the intersection of West Bremer Ave. and 5<sup>th</sup> St. NW/SW through East Bremer Ave. and 4<sup>th</sup> St. NE/SE. (See included maps for details.) The general purpose of this project is an overall aesthetic enhancement of the area as well as the positive environmental impacts of trees. The City, by means of this bid, invites all qualified proposers to submit bids in accordance with the requirements outlined in this bid packet.

#### **1.2 Project Overview**

The City seeks to enhance its Main Street District with the addition of 19 street trees and tree growing pits. The tree growing pits and trees shall be installed exactly to the specifications detailed in the bid packet. The project can begin after the approval by City Council of a successful bid. The project must be completed by June 30, 2020.

#### **1.3 City's Right to Reject**

This bid does not commit the City to select a proposer or to award a contract to any proposer. The City reserves the right to accept or reject, in whole or in part, any bid it receives.

#### **1.4 Schedule of Events**

- Advertise and send out bids: 2-28-2020
- GreenBlue Urban, Inc. Instructional presentation: March 6<sup>th</sup>, 10:00 Waverly Civic Center. Attendance is mandatory for all bidders unless excused by the City.
- Sealed Bid Due Date: 3-20-2020 by 10:00AM at the Economic Development Office.
- Selection of finalists to follow immediately.
- Council approval at the next available meeting.
- Project start date - Project can start at any time after the bid has been awarded.
- Project completion date - June 30, 2020

### **Section 2: Bid Requirements**

#### **2.1 Right to Modify, Rescind, or Revoke BID**

The City reserves the rights to modify, rescind, or revoke this bid, in whole or in part, at any time prior to the date on which the authorized representative of the City executes a contract with the selected proposer.

## **2.2 Compliance with Bid Requirements**

By submission of a bid, a proposer agrees to be bound by the requirements set forth in this bid. The City, at its sole discretion, may disqualify a bid from consideration, if the City determines a bid is non-responsive and/or non-compliant, in whole or in part, with the requirements set forth in this bid.

## **2.3 Binding Effect of Bid**

Unless otherwise agreed in writing signed by the City or its designee, each proposer agrees to and shall be bound by the information and documentation provided with the bid, including prices quoted for services.

## **2.4 Signature, Certification of Proposer**

The bid must be signed and dated by a representative of the proposer who is authorized to bind the proposer to the terms and conditions contained in this bid and to compliance with the information submitted in the bid. Each proposer submitting a bid certifies to both (a) the completeness, veracity, and accuracy of the information provided in the bid and (b) the authority of the individual whose signature appears on the bid to bind the Proposer to the terms and conditions set forth in this bid. Bids submitted without the required signature shall be disqualified.

## **2.5 Requirements for Submission**

Each bidder shall submit one (1) original, which must be clearly defined as the ORIGINAL and two (2) copies of its bid. The original shall be prepared on a word processor using a font that is clearly readable. The copies shall be of good, readable quality.

## **2.6 Deadline for Bids**

Bids must be received by the City of Waverly Economic Development Office at City Hall 200 1<sup>st</sup> Street NE, Waverly, by 3/20/2020 at 10:00AM. Any bid received after the deadline will be immediately disqualified from consideration. To withdraw a bid, a written request must be made to the City prior to the scheduled opening.

## **2.7 Compliance with Applicable Laws, Regulations, Ordinances, City of Waverly Policies and Procedures**

By submitting a bid, the proposer agrees to and shall comply with all applicable local, state and federal laws and regulations, as well as with all applicable policies and procedures of the City of Waverly.

## **2.8 Plant Material Specifications**

Plant material specifications are detailed in these bid specifications. All plant material and hardscape are to be installed prior to June 30, 2020.

## **2.9 Coordination with Existing Plant Material/Hardscapes/Public and Private Property and Businesses**

- No more than 1 tree planting pit on a single block on each side may be under construction at any one time. No more than five days shall be allocated to any tree pit installation except under unusual circumstances. No more than 3 parking stalls shall be closed per tree installation. Careful attention shall be made to limit disruption to the adjacent business.
- Care shall be taken to protect existing trees and plant materials from all mechanical damage and unnecessary soil compaction. Protect lawn areas and promptly repair damage resulting from planting operations.
- Any damage caused by the contractor done to existing areas or property either public or private that are included or not included in this bid will be repaired or replaced to its original condition at the sole cost of the bidder.

## **Section 3: Bidder Qualifications**

Bidders will be qualified on the following information.

- Proof of growing practices in accordance with accepted arboricultural standards; (for example: Member of American Nurseryman's Association, member of the Iowa Nursery and Landscape Association, degree from an accredited school of horticulture or forestry, nurseryman or plant grower licensed by the Iowa Department of Agriculture, etc.).
- Comparable tree planting projects that have been completed (include the number of trees planted, type of project, and references complete with addresses and telephone numbers), if requested.
- All bids will be evaluated on price, qualifications, guarantee, and comparable projects. All bids must be signed with the firm's name on company letterhead and by an officer or an employee having the authority to bind the company or firm by his or her signature. Failure to sign the bid will disqualify the bidder.
- All bidders must attend the Blue Green Urban presentation about the Arbor system unless excused by the City. Presentation will be held on Friday March 6<sup>th</sup> at 10:00 am at Waverly Civic Center. There is no cost for attending.

## **Section 4: Project Scope and Plans**

### **4.1 Tree Pits and Tree Planting.**

- The Project involves the creation of 19 urban street tree pits using the installation process and procedures developed by the City's representative Align Architecture & Planning. The plans include a Tree Pit Section and Tree Pit Plan. A tree guard will be provided by the City of Waverly for use in the installation. The City reserves the right to reduce or increase the number of trees to be installed according to the bid item cost.
- Plans showing locations of tree pits are attached.

## **Section 5: Planting List and Installment Specifications**

- All trees shall be planted in accordance with the design. Careful attention shall be made to ensure that the proper tree is placed in the proper tree planting pit. See project design maps for proper tree species placement locations.

### **City of Waverly Streetscape Enhancement Project: Tree Placement and Size Specifications**

| <b>Tree Placement</b> | <b>Tree Species</b>                | <b>Min. Caliper Diameter</b> | <b>Min. Tree Height</b> |
|-----------------------|------------------------------------|------------------------------|-------------------------|
| STn-1                 | Ginkgo biloba 'Princeton Sentry'   | 1.5 inch                     | 8 feet                  |
| STn-2                 | Ginkgo biloba 'Princeton Sentry'   | 1.5 inch                     | 8 feet                  |
| STs-1                 | Acer rubrum 'JFS-KW78' PP 25301    | 1.5 inch                     | 8 feet                  |
| STs-2                 | Acer rubrum 'JFS-KW78' PP 25301    | 1.5 inch                     | 8 feet                  |
| STn-3                 | Quercus robur X alba 'Crimschmidt' | 1.5 inch                     | 8 feet                  |
| STn-4                 | Quercus robur X alba 'Crimschmidt' | 1.5 inch                     | 8 feet                  |
| STs-3                 | Acer platanoides 'Columnar'        | 1.5 inch                     | 8 feet                  |
| STs-4                 | Acer platanoides 'Columnar'        | 1.5 inch                     | 8 feet                  |
| STn-5                 | Ginkgo biloba 'Princeton Sentry'   | 1.5 inch                     | 8 feet                  |
| STn-6                 | Ginkgo biloba 'Princeton Sentry'   | 1.5 inch                     | 8 feet                  |
| STs-5                 | Acer rubrum 'JFS-KW78' PP 25301    | 1.5 inch                     | 8 feet                  |
| STn-7                 | Ginkgo biloba 'Princeton Sentry'   | 1.5 inch                     | 8 Feet                  |
| STn-8                 | Ginkgo biloba 'Princeton Sentry'   | 1.5 inch                     | 8 feet                  |
| STs-6                 | Acer rubrum 'JFS-KW78' PP 25301    | 1.5 inch                     | 8 feet                  |
| STs-7                 | Acer rubrum 'JFS-KW78' PP 25301    | 1.5 inch                     | 8 feet                  |
| STn-9                 | Quercus robur X alba 'Crimschmidt' | 1.5 inch                     | 8 feet                  |
| STn-10                | Quercus robur X alba 'Crimschmidt' | 1.5 inch                     | 8 feet                  |
| STs-8                 | Acer platanoides 'Columnar'        | 1.5 inch                     | 8 feet                  |
| STs-9                 | Acer platanoides 'Columnar'        | 1.5 inch                     | 8 feet                  |

- Tree trunks shall not have branches on the lower 4 feet from the base. No pruning is allowed during the 2020 season of these lower branches. The branching height is to accommodate the 48-inch tree guards.
- The City's representative will assist in establishing the exact location of each tree pit.
- The Contractor shall coordinate with the City's representative to oversee the first pit installation and tree planting. This initial installation will establish the expectations and quality of the planting as the standard for subsequent installations.
- The brick strip in which the installations shall occur may contain an empty conduit, water service lines and construction debris. The City shall provide information regarding water service lines and storm sewer locations and locates shall be required. Locates shall be made using methods other than paint on the decorative bricks.

- The City shall provide locations for excavation materials without cost to the Contractor.
- Contractor is expected to protect all excavations with cones, caution tape and barricades as necessary.
- The Planting pit excavation of soil and rock material shall be removed from the site and dumped at a site to be designated by the City. Suitable designated topsoil will be available at a location designated by the City and available for pick up.

## **Section 6: Plant Material Quality Specifications**

### **6.1 Quality Assurance**

Nurseries are encouraged to obtain trees from within the State of Iowa. All trees shall be shipped with certificates of inspection as required by governmental authorities. The City of Waverly retains the right to inspect all trees on the nursery premises or City property and reject all trees, which do not meet written specifications. Substitutions will only be accepted with written approval of the City Administrator or a designee.

### **6.2 Guarantee and Replacement**

All trees shall be guaranteed for 12 months after installation and acceptance of work, to be alive and in satisfactory condition at the end of the guarantee period. Such guarantee excludes vandalism, animal damage, and unforeseen weather events (such as tornadoes and floods, etc.). At any time during the guarantee period, if any tree is found dead or not in satisfactory health as determined by the City, it will be, upon the request of the City of Waverly, immediately removed from the site and replaced as soon as conditions permit during the normal planting season. All replacements shall be of the same kind and size as specified in the planting list. Removal and replacement costs shall be borne by the Contractor. Any exceptions or substitutions to the above must be approved in writing by the City.

### **6.3 Certification of Stock Source and Nursery Guidelines**

All trees specified shall be container grown, balled and burlapped, grow bag, or tree spaded grown in a recognized nursery in accordance with good horticultural practices. Trees will be healthy, vigorous stock grown under climatic conditions similar to conditions in Waverly, Iowa. The trees shall be free of disease, insects, eggs, larvae injury, freeze damage, sunscald and defects such as abrasions or disfigurement. Trees will have appropriate root ball size in relation to stem caliper. Trees shall comply with the recommendations and requirements of ANSI Z60.1-2004 "American Standard for Nursery Stock." All trees must be uniform in size and shape. The City of Waverly reserves the right to inspect all trees at the place of growth or point of purchase for compliance with requirements for name, size and quality. Upon delivery to the planting site, the City of Waverly reserves the right to reject any plant material that does not meet the included standards, or plants that have been damaged during shipment. All tree shall be clearly labeled until a final inspection by the City.

#### **6.4 Product Delivery, Storage and Handling**

All trees shall be delivered from the growing site or Nursery to the planting site in a covered vehicle with special care so as to prevent the root ball from excess drying and limit wind damage to the foliage; tarps or covered vehicles are recommended. Always pick up the tree by the container or root ball, not by the trunk. If planting is delayed more than six hours after delivery, the trees shall be covered with moist soil or mulch or stored in a protected area. Do not remove container grown stock from containers until planting time. All plant material shall be watered as necessary until planted. No plant material shall be left unplanted at the planting site overnight.

#### **6.5 Maintenance Instructions**

All trees shall be maintained in a first-class condition until final acceptance of the total project is granted and a final inspection is made.

#### **6.6 General Conditions of Agreement**

Summary of work includes the field selection of trees which meet specifications, the storage and handling of these trees for a period of time until conditions allow installation. Installation of trees shall be completed by June 1, 2020.

Trees of the sizes specified shall be provided. All trees must be uniform in size and shape. Bidder must be able to supply the total number listed of each individual species. All trees are to be planted by the contractor in accordance with the specifications. No exceptions to specifications will be made unless written approval from the City Administrator or designee is granted.

### **Section 7. Tree Quality Standards and Specifications**

#### **7.1 Trunks and Branches**

- Co-dominant stems are not acceptable.
- Single, straight trunk, well-formed and sturdy. Multi-trunked specimens are acceptable only if specified.
- Lateral branching plentiful and uniformly distributed with the crown beginning no lower than four feet above the ground or the top rung of the tree guard. Variations due to site requirements may be allowed but must be submitted in writing and authorized by the City of Waverly prior to planting.
- Crotches shall not have included bark.
- Sprouts cleanly removed.
- Pruning scars clean cut leaving little or no protrusion from the trunk or branch.
- Trees shall be free of cold injury and sunscald.
- Caliper of trunk shall be taken six (6) inches above the ground up to and including four (4) inch caliper size, and twelve (12) inches above the ground for larger sizes.
- No wounding to the tree trunk and branches.

## **7.2 Foliage**

- Trees densely supplied with healthy, vigorous leaves of normal size, shape, texture and deep color appropriate to the species.
- No chlorosis is present.
- Pest and mechanical injury not to affect more the 5% of total foliage.

## **7.3 Root system**

- Shall be sturdily established in container.
- Shall not be excessively root bound.
- Shall have no kinked or circling roots.
- Shall have no large roots growing out of container.
- Rooting medium shall be weed free.
- If balled and burlapped, the root ball will not be cracked or broken.
- The size of the root ball shall be in proportion to the stem caliper as outlined in ANSI Z60.1-2004.

## **7.4 Mulch**

Mulch shall be of shredded bark and twigs, pine straw, bark chips, wood chips or other preapproved organic material.

## **7.5 Stakes**

- If stakes are provided, they shall be made of sound new hardwood or untreated softwood, 2" X 2", free of knotholes and other defects. Metal fencing posts are acceptable for larger stock.
- The use of the tree guard as a stake is prohibited unless permission is granted by the City.

## **Section 8. Planting Procedure and Guidelines**

All tree planting holes shall be excavated in accordance to the tree growing pit diagram included and instruction from Blue Green Urban methods.

### **8.1 Prune sparingly**

Examine the tree closely for injury to roots or branches. If any roots are crushed, cut them at a point just in front of the break. On the top, prune only broken branches, making sure to leave the branch collar (swollen area where one branch meets another) intact.

### **8.2 Prepare the planting hole and soil**

While some newly transplanted trees may benefit from an application of plant food, it is best not to use fertilizer until the tree or shrub is well-established. Never apply a high nitrogen fertilizer at planting time. It may burn tender roots.

### **8.3 Place the tree or shrub at the proper height**

To avoid damage when setting the tree in the hole, always lift the tree by the root ball. Never lift or carry the tree by the trunk. Add a sufficient amount of soil to the



planting hole to bring the tree to its proper growing level. This level is indicated at the point where the roots meet the tree trunk (root collar). Keep in mind that on balled and burlapped trees or shrubs, the point at which the burlap is tied can be much higher than the original soil line. In heavy, clay soils, the root ball may be planted slightly higher than the surrounding ground level, but soil must be added to slope from the top of the root ball to ground level. **Not more than 1/4 of root ball may be above ground.**

#### **8.4 Fill the hole firmly but gently**

- If the tree is balled and burlapped, cut the string and remove all burlap on the top of the root ball. A minimum of 1/2 of the burlap must be removed from all sides of the root ball.
- No burlap may be exposed to direct air contact. Completely remove all containers, peat pots, and root control bags. A minimum of 1/2 of the wire basket must be removed from the root ball **after** the tree has been set in the hole.
- Fill the hole by gently firming the earth around the tree to hold it in place and to eliminate air pockets. Settle the soil around the roots with water and add soil to the hole until the tree is firmly positioned. Do not excessively tamp around the tree base. Tamping will compact the soil and may inhibit the spread of roots. Create a tree well by raking a ridge of soil around the margin of the hole (outside the root area), to create a reservoir to hold water. Follow all instruction on the Tree Planting Pit diagram.

#### **8.5 Stake the tree if necessary**

- Staking a tree can cause bark damage, so avoid where possible. On windy sites evergreens or large trees require staking for the first growing season.
- Nylon webbing or strapping must be used if the staking material comes in contact with the main trunk. Wire threaded through garden hose is acceptable if it is formed into a circle large enough to avoid all contact with tree bark. The circle of hose may be centered around the trunk and then wired to stakes that are placed outside the perimeter of the tree guard.

#### **8.6 Mulch the tree**

Establish a 3 to 4-inch layer of acceptable mulch around the newly planted tree. This will conserve soil moisture and protect the tree roots from hot and cold temperatures. Pull mulch away from the tree trunk to provide aeration. Mulch may be shredded bark and twigs, pine straw, or bark and wood chips or other pre-approved organic material.

#### **8.7 Water the tree**

Saturate the fresh backfill around the tree with water in an amount that will ensure the entire root ball becomes wet

## Project Bid Proposal

Tree Planting Pits per tree:     \$\_\_\_\_\_

Total Planting Pits and Labor Cost for 19 Trees:     \$\_\_\_\_\_

Planting Material Cost per tree: \$\_\_\_\_\_

Total Plant Material Cost for 19 Trees:     \$\_\_\_\_\_

**Total Project Bid Proposal:**

Total of all Plant Material, Hardscape Material, Planting Pits, Labor, Guarantees, and any other cost to be passed on to The City.

\$\_\_\_\_\_

Company Name: \_\_\_\_\_

Company Address: \_\_\_\_\_

Phone: \_\_\_\_\_

Representative Signature:

\_\_\_\_\_

Name

\_\_\_\_\_

Dated

## Nursery Questionnaire

Please submit the following information as statements of your experience and qualifications. Additional sheets may be used.

1) How many tree plantings projects have you completed that are similar to the proposed project?

---

2) If you have completed similar projects, list at least four projects and give the name and location of each project, the amount, date of contract, and the owner or agency for which the work was performed. Please list the name, address, and the phone number of a reference for each project.

---

---

---

3) Have you ever installed a Green Blue Urban Arbor System, or were you part of the pre-bid instructional presentation?

---

4) Have you ever failed to complete a contract or been involved in litigation regarding the acceptance or final settlement for work performed? If the answer is yes, explain.

---

---

---

5) How many years have you been in business? \_\_\_\_\_

6) Are you a Certified Nurseryman? \_\_\_\_\_

Iowa Nurseryman's Certificate Number: \_\_\_\_\_

Name of Contractor: \_\_\_\_\_

Representative's Signature: \_\_\_\_\_

Typed Name and Title: \_\_\_\_\_

Address: \_\_\_\_\_ Phone: \_\_\_\_\_

Federal employer Identification (FEI) Number: \_\_\_\_\_

## CONTRACT

THIS AGREEMENT, made and entered into this \_\_\_\_\_ day of \_\_\_\_\_, 2020, by and between the City of Waverly, Iowa, the party of the first part, hereinafter called the OWNER and \_\_\_\_\_ of \_\_\_\_\_, the party of the second part, hereinafter called the CONTRACTOR.

WITNESSETH, the Contractor and the Owner for the consideration hereinafter named agree as follow:

### **ARTICLE I**

SCOPE OF WORK. The Contractor shall furnish all materials and perform all work shown on the Plans and described in the Specifications entitled: Waverly Streetscape Tree Project 2020, prepared by the City of Waverly, Iowa, and shall do everything required by this Agreement, the General Conditions of the Contract, the Specifications and the Plans.

### **ARTICLE II**

TIME OF COMPLETION. The work performed under this Contract shall be commenced on or before the date specified in the "Notice to Proceed" and shall be completed on or before June 30, 2020 and the time of commencing and completing said work is the essence of this Contract. Failure to complete the contract by June 30, 2020 will result in the reduction of \$500 per day from the compensation as a penalty.

### **ARTICLE III**

THE CONTRACT SUM. The Owner shall pay the Contractor the sum of \$ \_\_\_\_\_, payable as set forth in Article IV below, for the performance of the Contract in accordance with the attached schedule, subject to increases or decreases for change orders approved during the Project.

### **ARTICLE IV**

Payment to the contractor will be made in monthly estimates and one final payment. Monthly estimates will be equivalent to ninety-five percent (95%) of the contract value of the work completed during the preceding calendar month. Estimates will be prepared on the first day of each month by the Contractor. Such monthly payment will in no way be construed as an act of acceptance for any of the work partially or totally completed. Final payment to the Contractor will be made no earlier than thirty-one (31) days from and after the final acceptance of the work by the City.

### **ARTICLE V**

CONTRACTOR'S RESPONSIBILITY: The Contractor assumes full responsibility for the safekeeping of all materials and equipment and for all unfinished work until final acceptance by the Owner, and if any of it be damaged or be destroyed from any cause, he shall replace it at his own expense.

The Contractor shall indemnify and hold harmless the Owner against any liens filed for nonpayment of his bills in connection with the Contract work. The Contractor shall furnish the Owner satisfactory evidence that all persons who have done work or furnished materials, equipment or service of any type under this Contract have been fully paid prior to the acceptance of the work by the Owner.

The Contractor agrees to accept full responsibility for all construction means, methods, sequences, techniques, proceedings, property and personal safety on the project site, including the same for all subcontractors, and do not expect that the Owner, Engineer or Engineer's Representative will assume any of these duties or responsibilities, except as provided in plan specifications. The Contractor shall indemnify and hold harmless the Owner from any and all liability, loss, cost, damage, and expense (including reasonable attorney's fees and court costs) resulting from, arising out of, or incurred by reason of any claims, actions, or suits based upon or alleging bodily injury, including death, or property damage rising out of or resulting from the Contractor's operations under this Contract, whether such operations be by himself or by any subcontractor or by anyone directly or indirectly employed by either of them. The Contractor shall obtain insurance for this purpose, which shall insure the interests of the Owner as the same may appear and shall file with the Owner and Engineer certificates of such insurance upon request.

#### **ARTICLE VI**

**ACCEPTANCE AND FINAL PAYMENT.** The manner of making final acceptance and final payment shall be as provided in the Specifications. The Owner may require the Contractor to show satisfactory evidence that all payroll, materials, bills and other indebtedness connected with the work shall have been paid before final acceptance of the work. The making and acceptance of the final payment shall constitute a waiver of all claims by the Owner other than those arising from unsettled liens and from all claims by the Contractor except those previously made and still unsettled.

#### **ARTICLE VII**

**CONTRACT DOCUMENTS.** The Official Notice, the Proposal, this Contract, Detailed Specifications (including Measurement and Payment), the General Specifications, the Instruction to Bidders, and they are as fully a part of this Agreement and Contract and to the same effect as if each of them had been set forth in complete detail herein.

**IN WITNESS WHEREOF.** The parties have executed this Agreement and Contract and one other of like tenor as of the day and year first above written.

**CITY OF WAVERLY, IOWA**

**CONTRACTOR:**

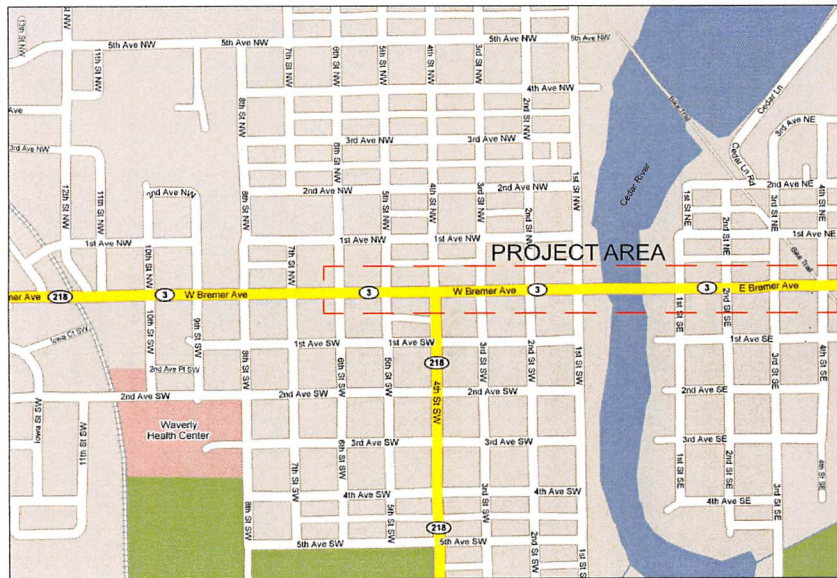
\_\_\_\_\_  
By: Adam Hoffman, Mayor

\_\_\_\_\_  
Name & Title

ATTEST:

\_\_\_\_\_  
Carla Guyer, City Clerk

# Waverly Streetscape Tree Project-2020



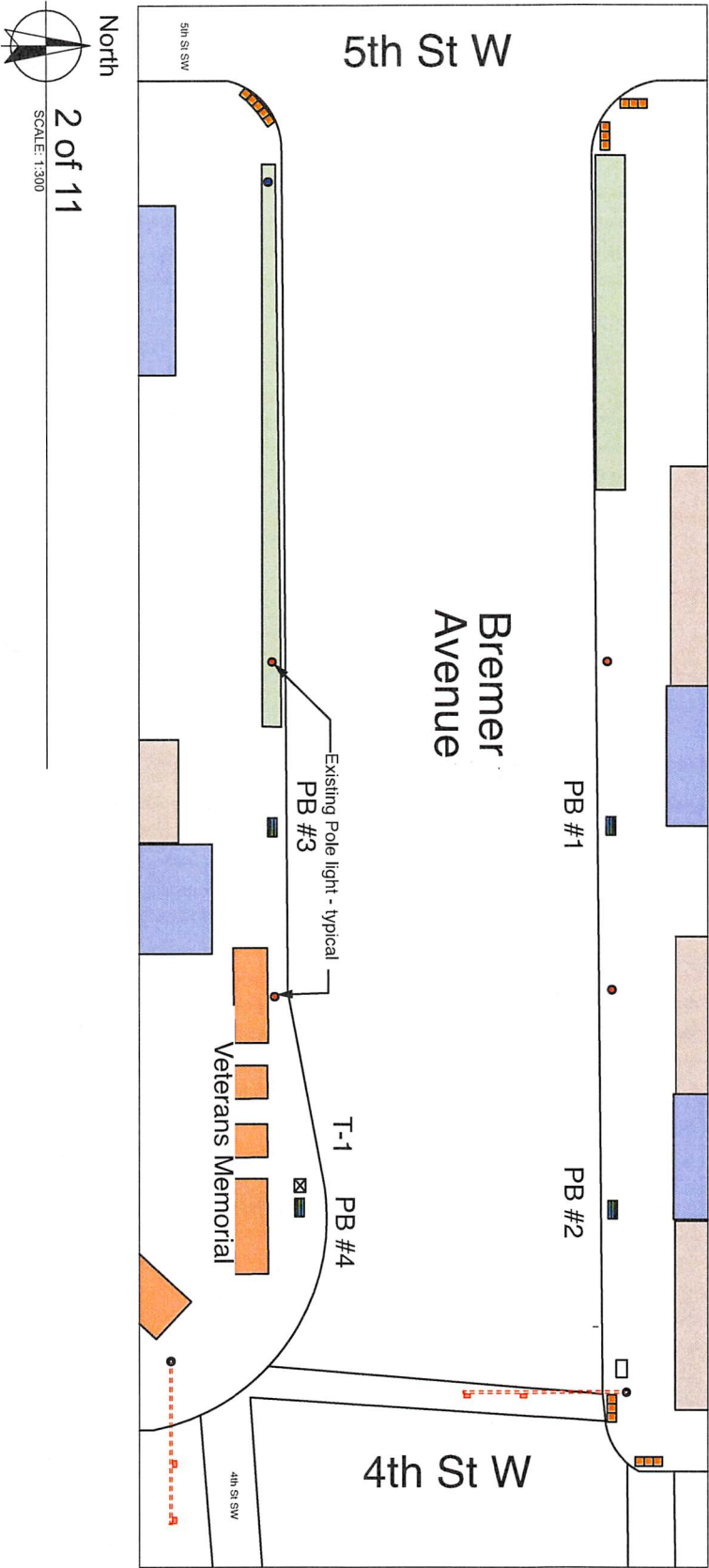
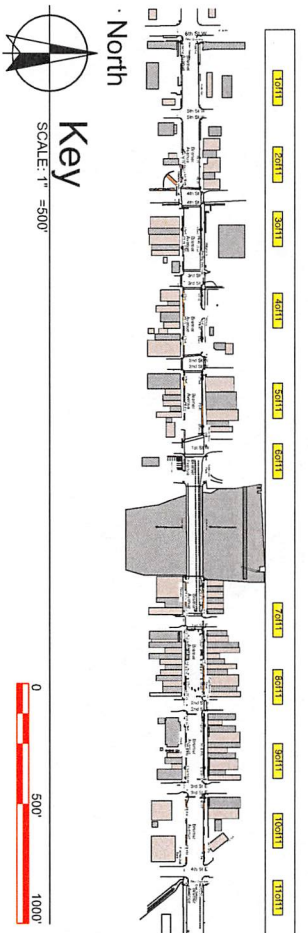
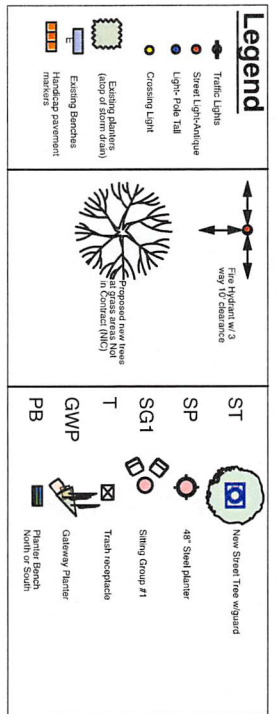
Location Map - Waverly, Iowa

## Sheet Index

|     |                           |
|-----|---------------------------|
| AT  | Title Page / Index        |
| A1  | Street Sections 1 of 11   |
| A2  | Street Sections 2 of 11   |
| A3  | Street Sections 3 of 11   |
| A4  | Street Sections 4 of 11   |
| A5  | Street Sections 5 of 11   |
| A6  | Street Sections 6 of 11   |
| A7  | Street Sections 7 of 11   |
| A8  | Street Sections 8 of 11   |
| A9  | Street Sections 9 of 11   |
| A10 | Street Sections 10 of 11  |
| A11 | Street Sections 11 of 11  |
| A12 | Tree-pit Plan             |
| A13 | Tree-pit Section          |
| A14 | Corner Plan @ Four Queens |



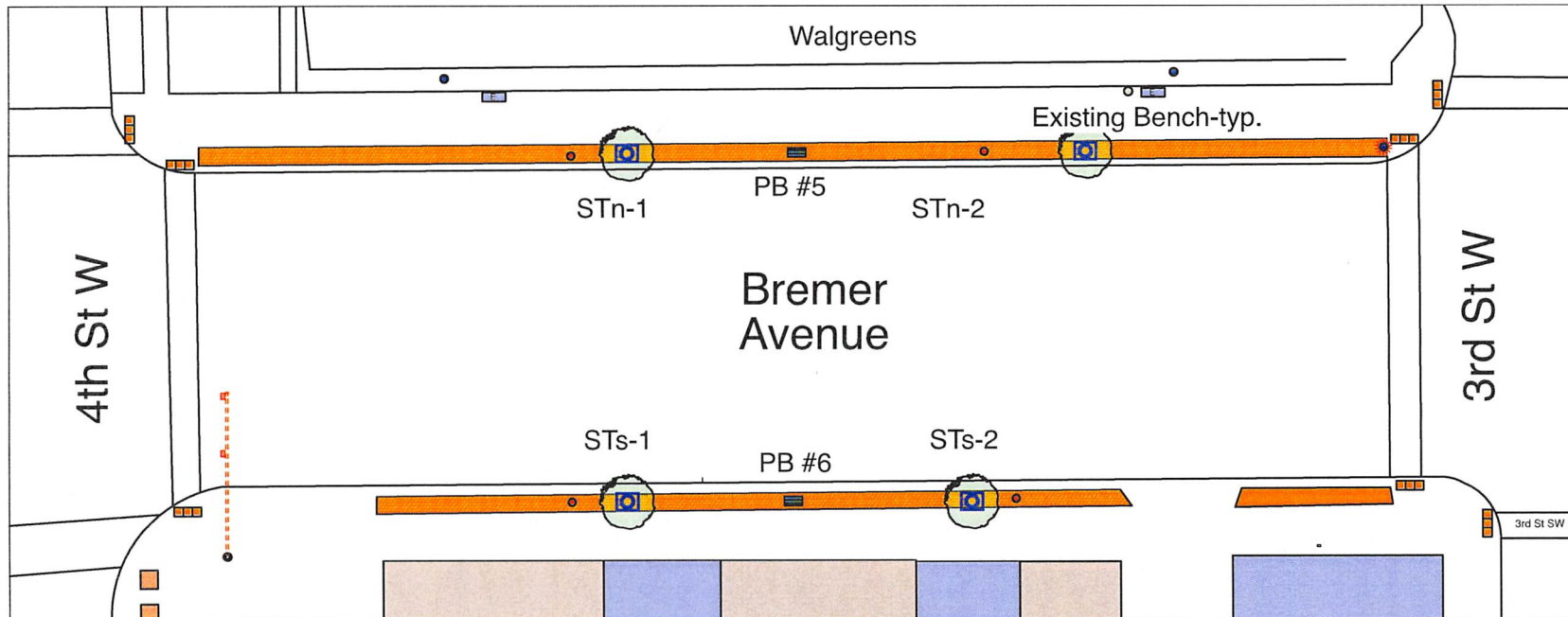
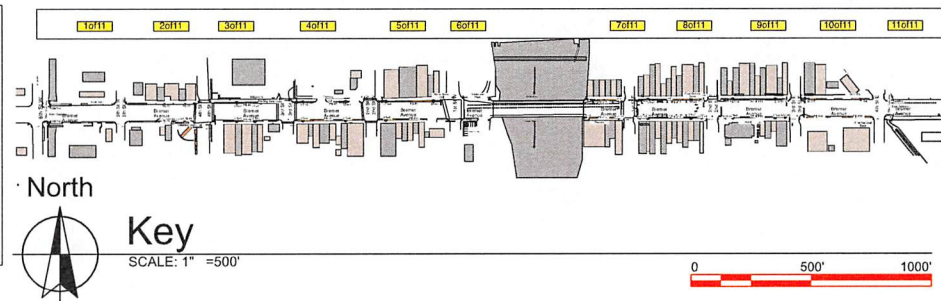






# Legend

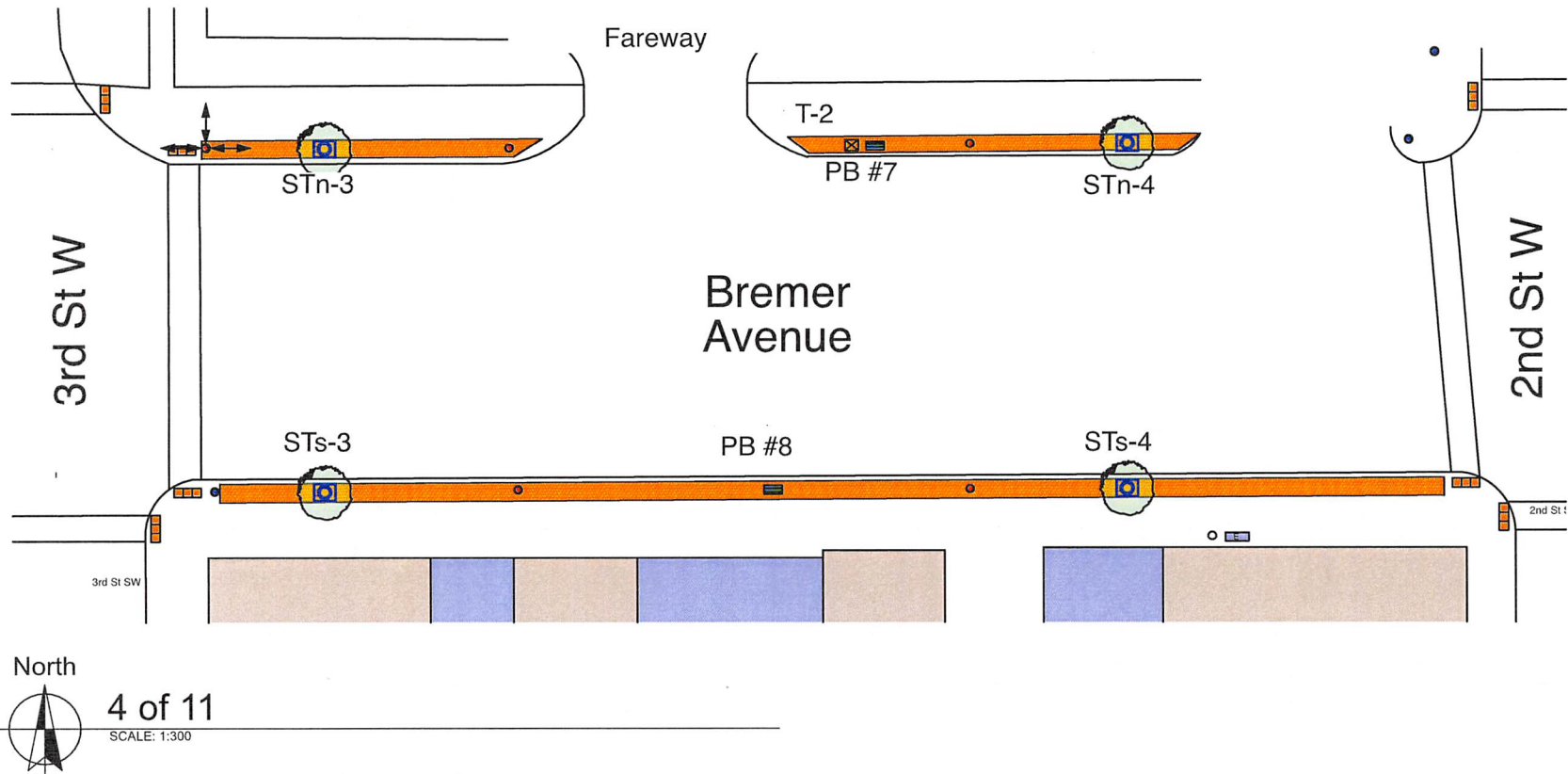
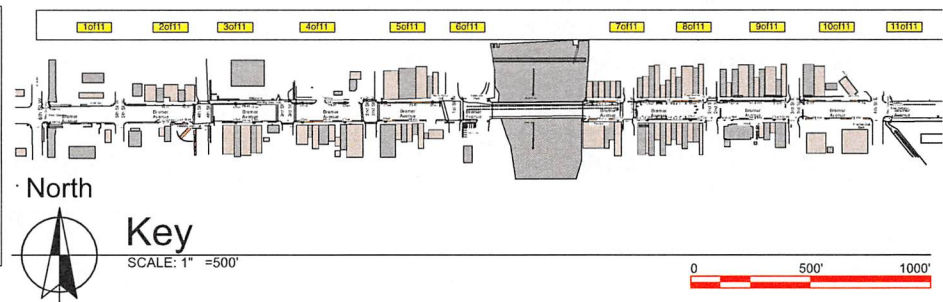
|  |                                                         |  |     |                              |
|--|---------------------------------------------------------|--|-----|------------------------------|
|  | Traffic Lights                                          |  | ST  | New Street Tree w/guard      |
|  | Street Light-Antique                                    |  | SP  | 48" Steel planter            |
|  | Light-Pole Tall                                         |  | SG1 | Sitting Group #1             |
|  | Crossing Light                                          |  | T   | Trash receptacle             |
|  | Existing planters (atop of storm drain)                 |  | GWP | Gateway Planter              |
|  | Existing Benches                                        |  | PB  | Planter Bench North or South |
|  | Handicap pavement markers                               |  |     |                              |
|  | Fire Hydrant w/ 3 way 10' clearance                     |  |     |                              |
|  | Proposed new trees at grass areas Not in Contract (NIC) |  |     |                              |



3 of 11  
SCALE: 1:300

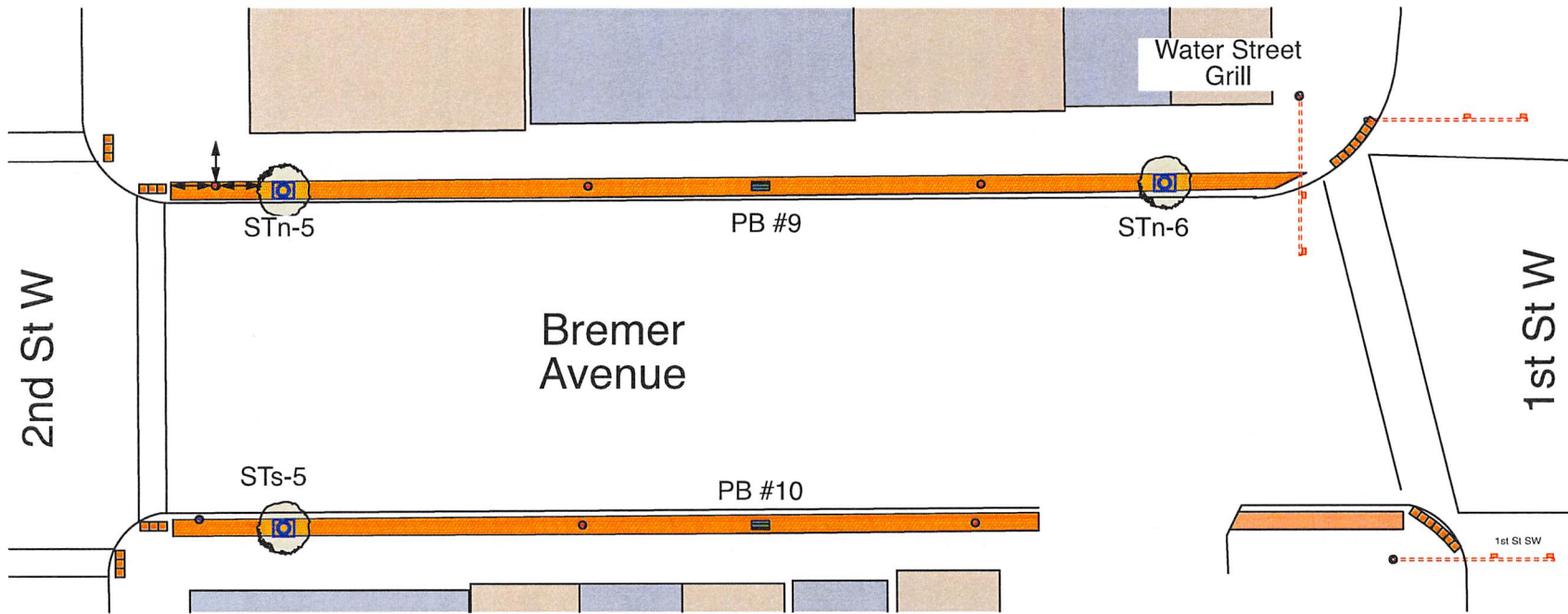
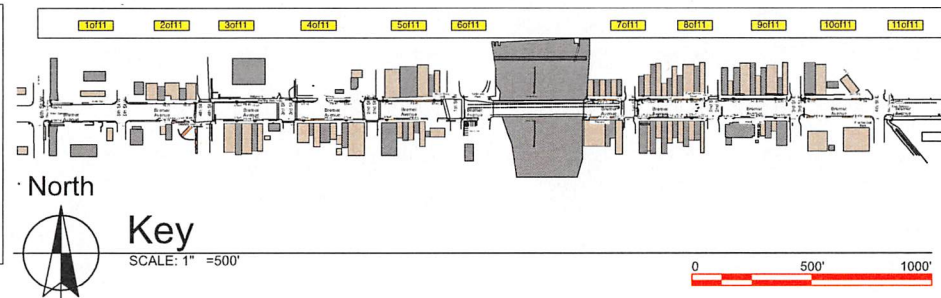
**Legend**

- Traffic Lights
- Street Light-Antique
- Light-Pole Tall
- Crossing Light
- Existing planters (atop of storm drain)
- Existing Benches
- Handicap pavement markers
- Fire Hydrant w/ 3 way 10' clearance
- Proposed new trees at grass areas Not in Contract (NIC)
- ST New Street Tree wiguard
- SP 48" Steel planter
- SG1 Sitting Group #1
- T Trash receptacle
- GWP Gateway Planter
- PB Planter Bench North or South



# Legend

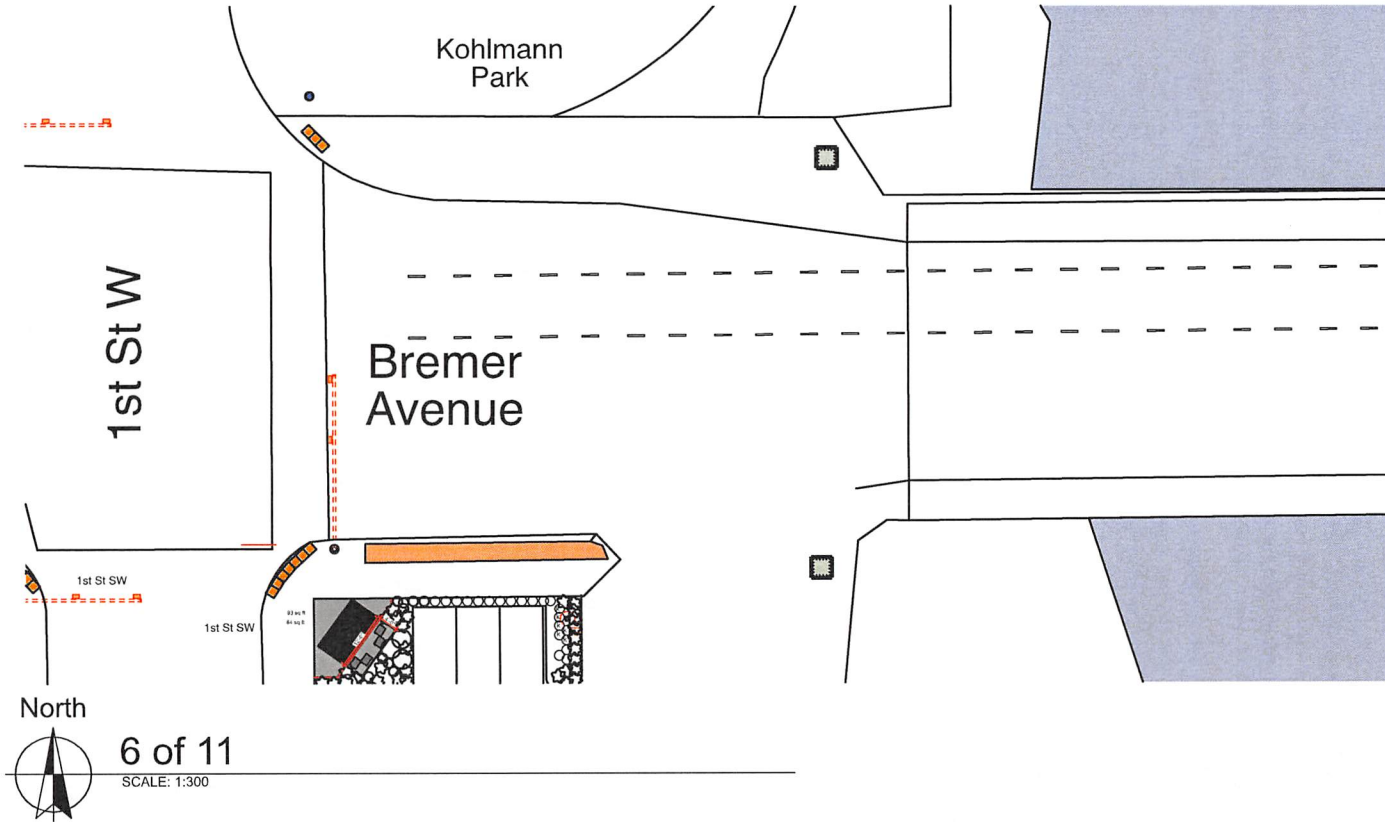
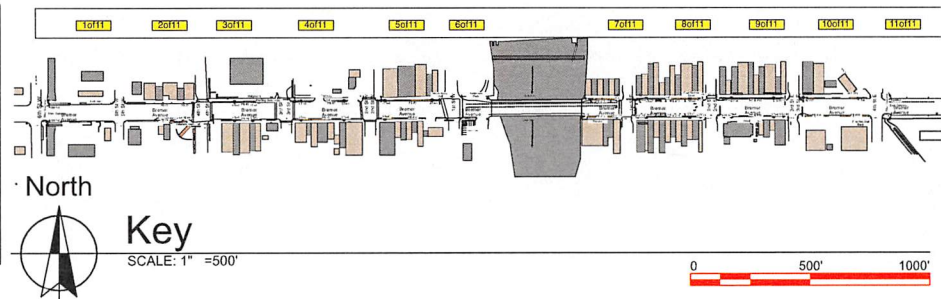
|  |                                                         |  |     |                              |
|--|---------------------------------------------------------|--|-----|------------------------------|
|  | Traffic Lights                                          |  | ST  | New Street Tree w/guard      |
|  | Street Light-Antique                                    |  | SP  | 48" Steel planter            |
|  | Light-Pole Tail                                         |  | SG1 | Sitting Group #1             |
|  | Crossing Light                                          |  | T   | Trash receptacle             |
|  | Existing planters (atop of storm drain)                 |  | GWP | Gateway Planter              |
|  | Existing Benches                                        |  | PB  | Planter Bench North or South |
|  | Handicap pavement markers                               |  |     |                              |
|  | Fire Hydrant w/ 3 way 10' clearance                     |  |     |                              |
|  | Proposed new trees at grass areas Not in Contract (NIC) |  |     |                              |



5 of 11  
SCALE: 1:300

**Legend**

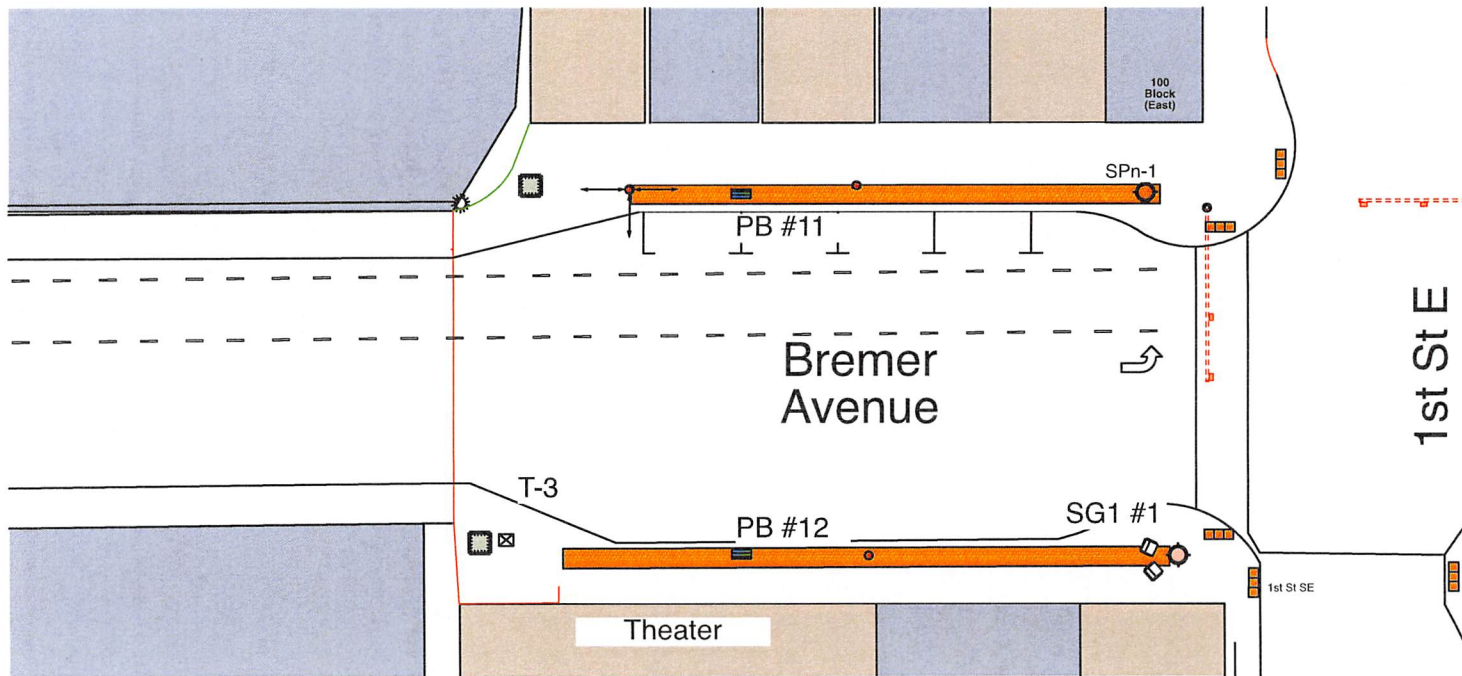
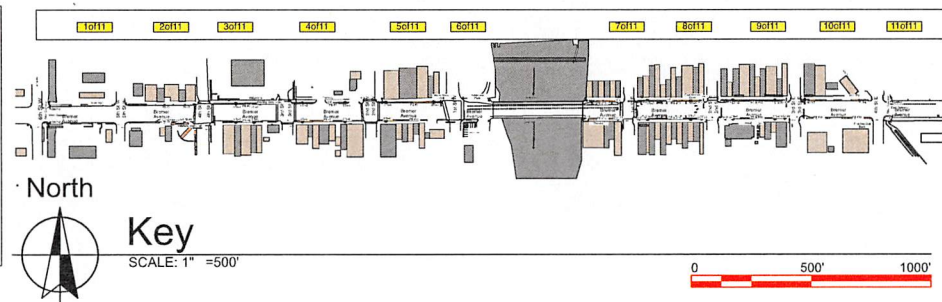
- Traffic Lights
- Street Light-Antique
- Light-Pole Tall
- Crossing Light
- Existing planters (atop of storm drain)
- Existing Benches
- Handicap pavement markers
- Fire Hydrant w/ 3 way 10' clearance
- Proposed new trees at grass areas not in Contract (NIC)
- ST New Street Tree w/guard
- SP 48" Steel planter
- SG1 Sitting Group #1
- T Trash receptacle
- GWP Gateway Planter
- PB Planter Bench North or South





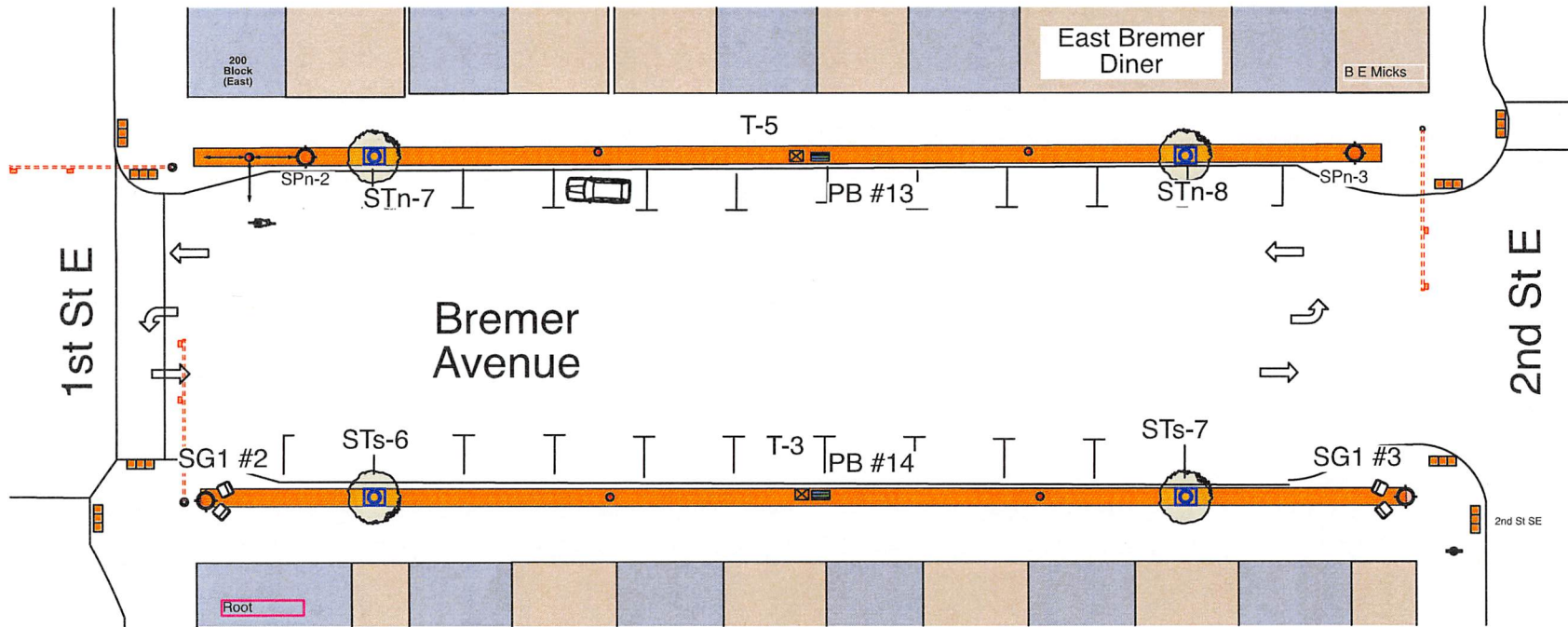
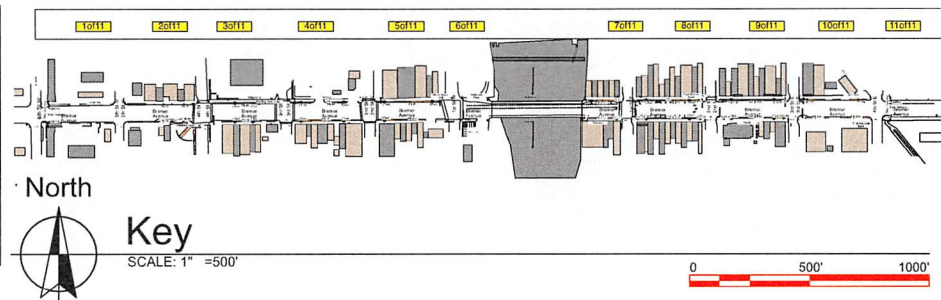
**Legend**

- Traffic Lights
- Street Light-Antique
- Light-Pole Tall
- Crossing Light
- Existing planters (atop of storm drain)
- Existing Benches
- Handicap pavement markers
- Fire Hydrant w/ 3 way 10' clearance
- Proposed new trees at grass areas Not in Contract (NIC)
- ST New Street Tree wiguard
- SP 48" Steel planter
- SG1 Sitting Group #1
- T Trash receptacle
- GWP Gateway Planter
- PB Planter Bench North or South



# Legend

|  |                                                        |  |     |                              |
|--|--------------------------------------------------------|--|-----|------------------------------|
|  | Traffic Light                                          |  | ST  | New Street Tree w/guard      |
|  | Street Light-Antique                                   |  | SP  | 48" Steel planter            |
|  | Light-Pole Tall                                        |  | SG1 | Sitting Group #1             |
|  | Crossing Light                                         |  | T   | Trash receptacle             |
|  | Existing planters (atop of storm drain)                |  | GWP | Gateway Planter              |
|  | Existing Benches                                       |  | PB  | Planter Bench North or South |
|  | Handicap pavement markers                              |  |     |                              |
|  | Fire Hydrant w/ 3 way 10' clearance                    |  |     |                              |
|  | Proposed new trees at grass area Not in Contract (NIC) |  |     |                              |

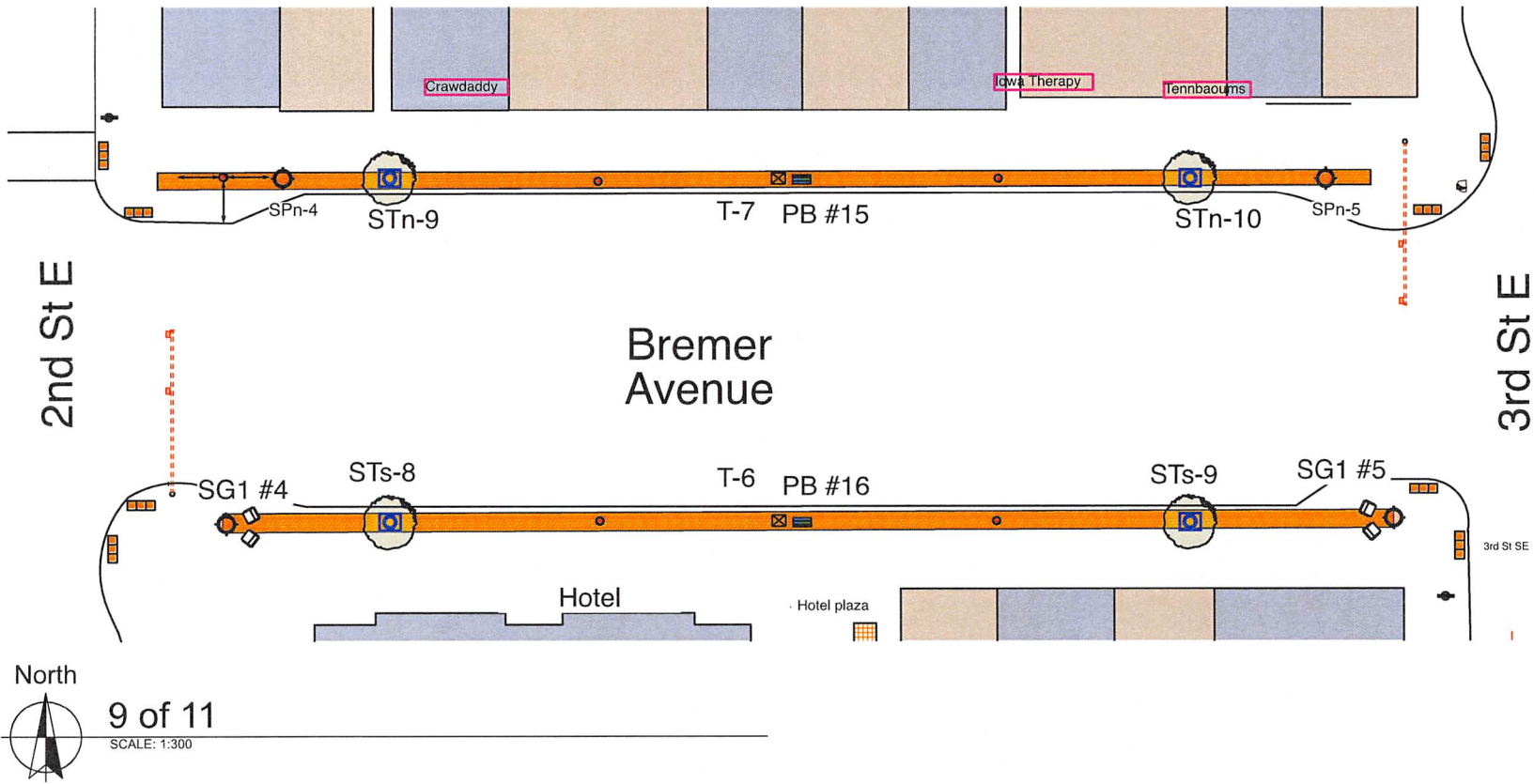
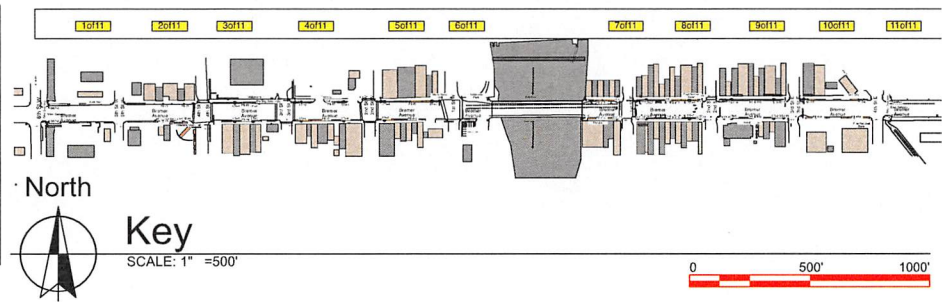


8 of 11

SCALE: 1:300

# Legend

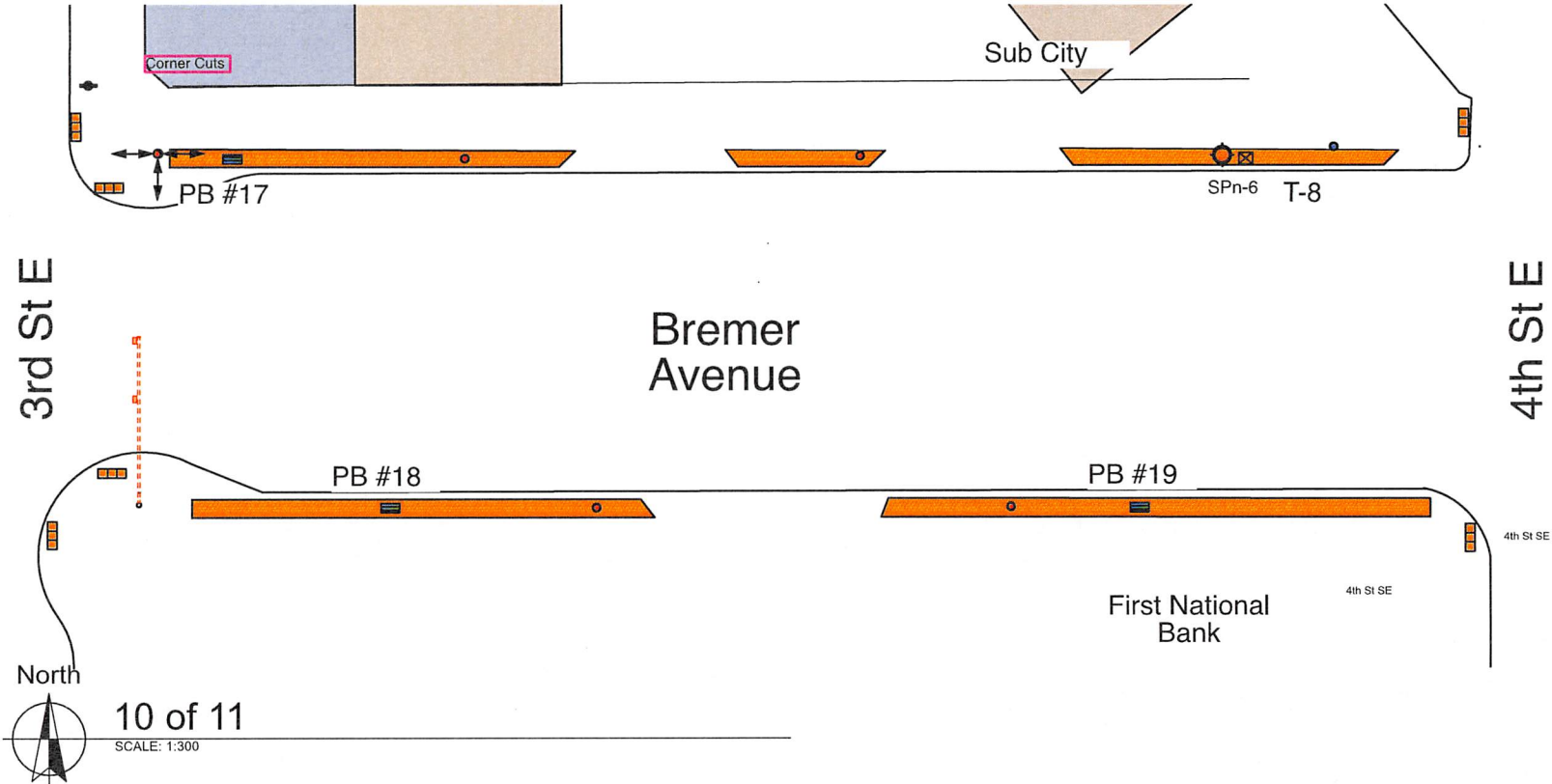
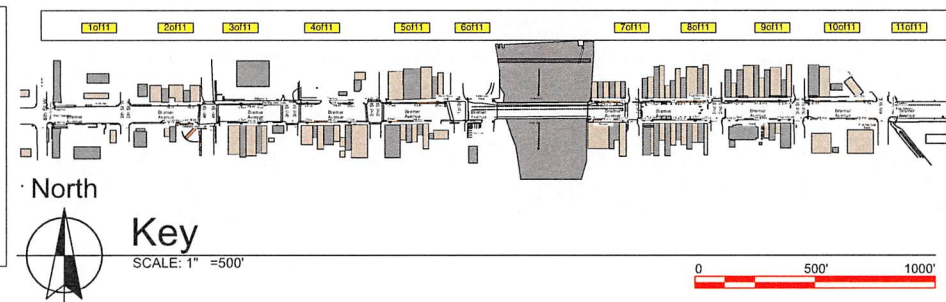
|  |                                                         |  |     |                              |
|--|---------------------------------------------------------|--|-----|------------------------------|
|  | Traffic Lights                                          |  | ST  | New Street Tree w/guard      |
|  | Street Light-Antique                                    |  | SP  | 48" Steel planter            |
|  | Light-Pole Tall                                         |  | SG1 | Sitting Group #1             |
|  | Crossing Light                                          |  | T   | Trash receptacle             |
|  | Existing planters (atop of storm drain)                 |  | GWP | Gateway Planter              |
|  | Existing Benches                                        |  | PB  | Planter Bench North or South |
|  | Handicap pavement markers                               |  |     |                              |
|  | Proposed new trees at grass areas Not in Contract (NIC) |  |     |                              |
|  | Fire Hydrant w/ 3 way 10' clearance                     |  |     |                              |





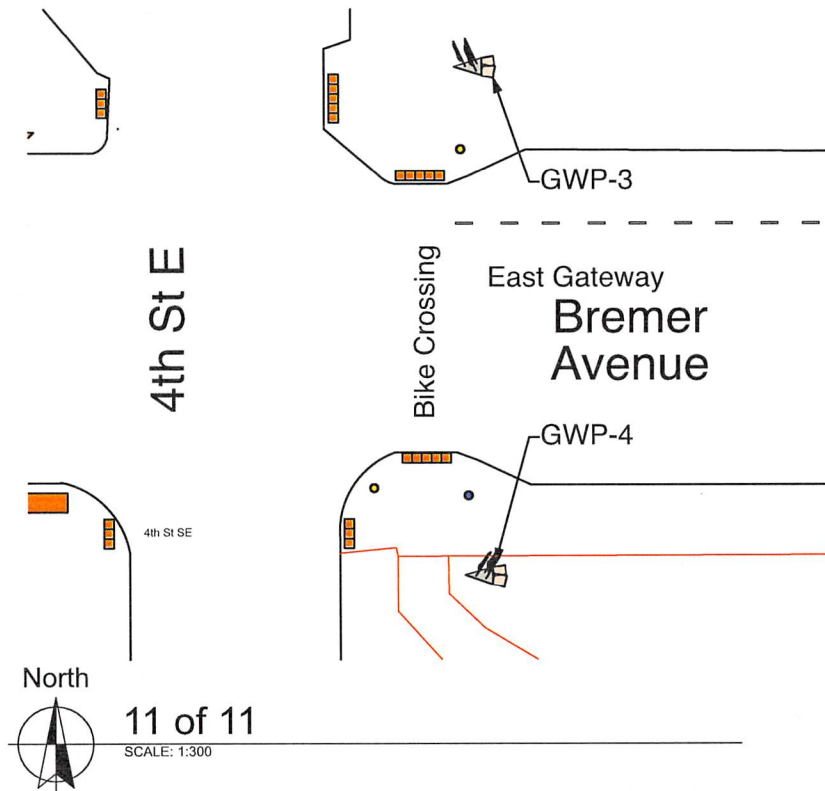
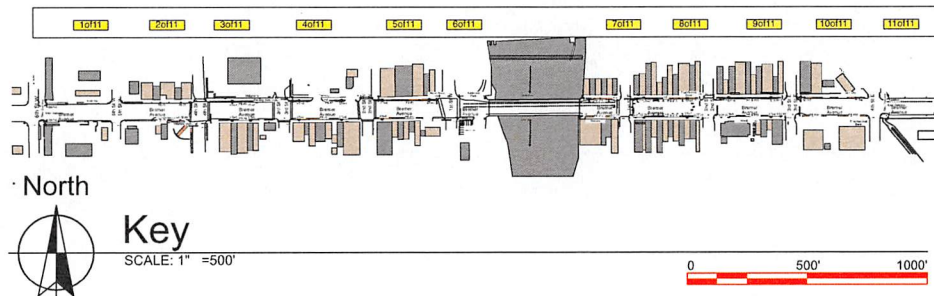
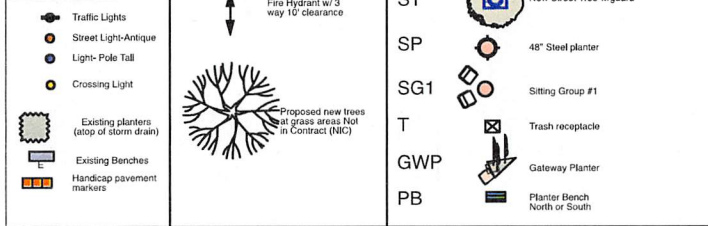
**Legend**

- Traffic Lights
- Street Light-Antique
- Light-Pole Tall
- Crossing Light
- Existing planters (atop of storm drain)
- Existing Benches
- Handicap pavement markers
- Fire Hydrant w/ 3 way 10' clearance
- Proposed new trees at grass areas Not in Contract (NIC)
- ST New Street Tree w/guard
- SP 48" Steel planter
- SG1 Sitting Group #1
- T Trash receptacle
- GWP Gateway Planter
- PB Planter Bench North or South





## Legend

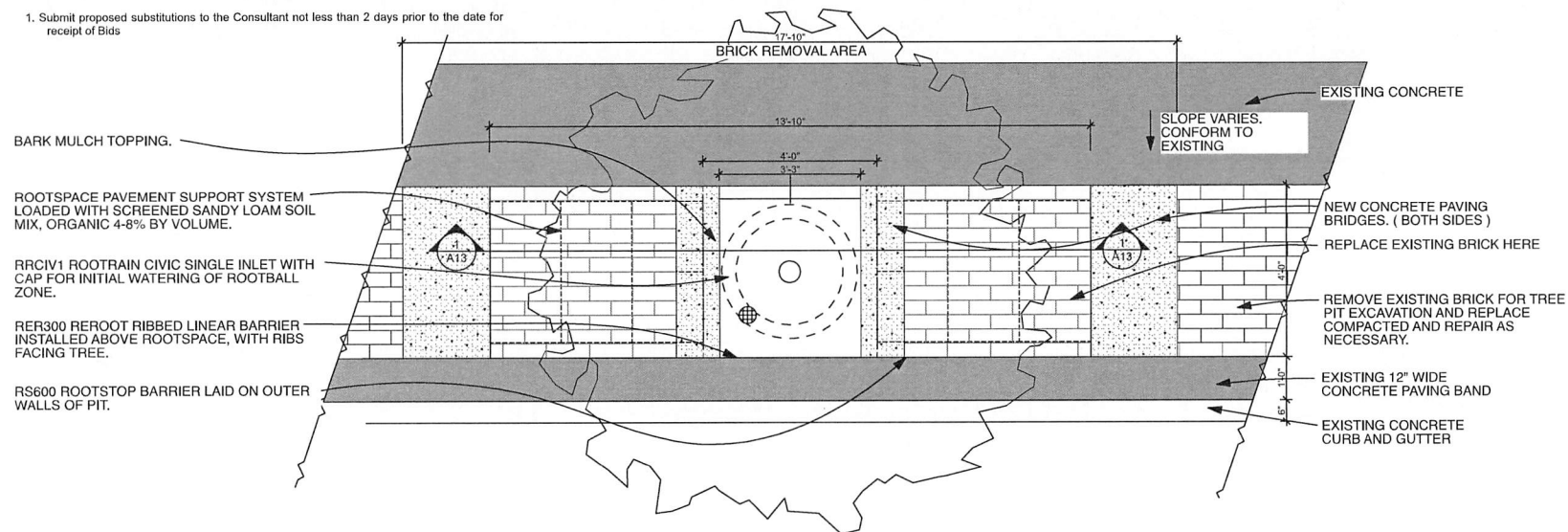


|        |                                    |
|--------|------------------------------------|
| 4-GWP  | Gate Way Planter                   |
| 19-PB  | Planter/Bench                      |
| 10-STn | Street Tree North                  |
| 9-STs  | Street Tree South                  |
| 5-SG1  | Sitting Group #1 (includes 5-SP)   |
| 6-SPs  | 48" Steel Planter (+5=11 SP total) |

1. GreenBlue Urban Inc.  
4405 Anderson Road  
Knoxville, TN 37918  
Phone: 865-470-6588 Website: [www.greenblue.com](http://www.greenblue.com) E-mail: [inquiries@greenblue.com](mailto:inquiries@greenblue.com)

B. Substitutions: Manufacturers seeking approval of their products are required to comply with the Owner's Instructions to Bidders, generally contained in the Project Manual. If such instructions are not included in Division 00 or Division 01, submit requests as specified herein.

1. Submit proposed substitutions to the Consultant not less than 2 days prior to the date for receipt of Bids



SCALE: 3/8" = 1'-0"

A. Tree Guard - Acceptable Manufacturer:

1. GreenBlue Urban Inc.  
4405 Anderson Road  
Knoxville, TN 37918  
Phone: 865-470-6588 Website: [www.greenblue.com](http://www.greenblue.com) E-mail: [inquiries@greenblue.com](mailto:inquiries@greenblue.com)

B. Substitutions: Manufacturers seeking approval of their products are required to comply with the Owner's Instructions to Bidders, generally contained in the Project Manual. If such instructions are not included in Division 00 or Division 01, submit requests as specified herein.

1. Submit proposed substitutions to the Consultant not less than 2 days prior to the date for receipt of Bids

**GENERAL NOTES:**

1. SUBMIT ALL ITEMS FOR ARCHITECT REVIEW.
2. ENSURE THE PIT BASE IS SCREENED, LEVELED AND COMPACTED PROPERLY BEFORE PLACING CELLS ON BASE, TO ALLOW FOR EASE OF INSTALLATION OF OVERALL MATRIX.
3. ADEQUATE DRAINAGE FROM BASE OF TREE PIT TO BE PROVIDED.

**TREE ROOTBALL.**

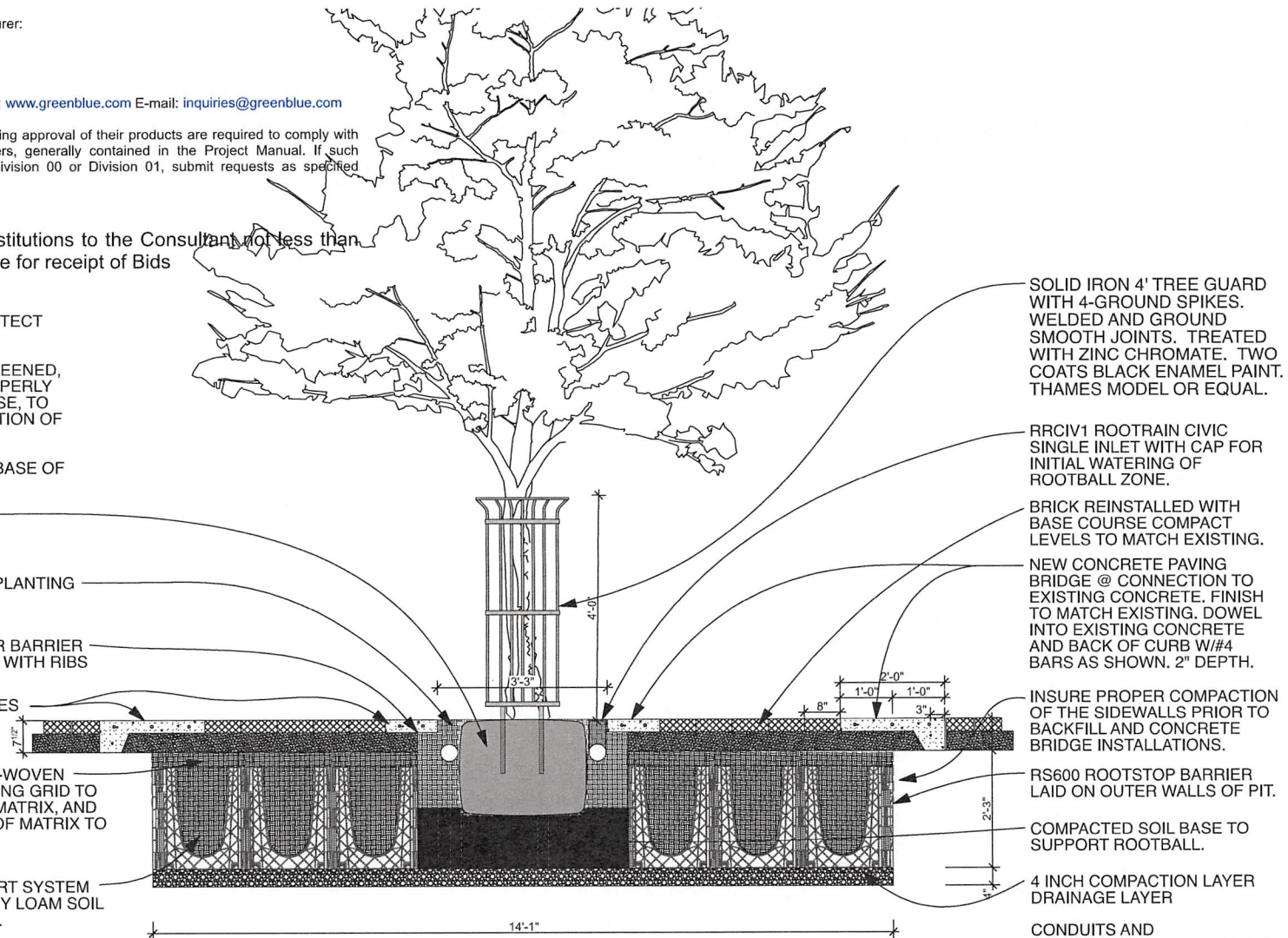
SOFT PLANTING OR MULCH TO PLANTING SPECIFICATIONS.

RER300 REROOT RIBBED LINEAR BARRIER INSTALLED ABOVE ROOTSPACE, WITH RIBS FACING TREE.

NEW CONCRETE PAVING BRIDGES

COMBIGRID HEAVY GRADE NON-WOVEN FILTER FABRIC WITH REINFORCING GRID TO TOP SURFACE OF ROOTSPACE MATRIX, AND FOLDED TO LINE OUTER EDGE OF MATRIX TO DEPTH OF 12".

ROOTSPACE PAVEMENT SUPPORT SYSTEM LOADED WITH SCREENED SANDY LOAM SOIL MIX, ORGANIC 4-8% BY VOLUME.



SOLID IRON 4' TREE GUARD WITH 4-GROUND SPIKES. WELDED AND GROUND SMOOTH JOINTS. TREATED WITH ZINC CHROMATE. TWO COATS BLACK ENAMEL PAINT. THAMES MODEL OR EQUAL.

RRCIV1 ROOTRAIN CIVIC SINGLE INLET WITH CAP FOR INITIAL WATERING OF ROOTBALL ZONE.

BRICK REINSTALLED WITH BASE COURSE COMPACT LEVELS TO MATCH EXISTING.

NEW CONCRETE PAVING BRIDGE @ CONNECTION TO EXISTING CONCRETE. FINISH TO MATCH EXISTING. DOWEL INTO EXISTING CONCRETE AND BACK OF CURB W/#4 BARS AS SHOWN. 2" DEPTH.

INSURE PROPER COMPACTION OF THE SIDEWALLS PRIOR TO BACKFILL AND CONCRETE BRIDGE INSTALLATIONS.

RS600 ROOTSTOP BARRIER LAID ON OUTER WALLS OF PIT.

COMPACTED SOIL BASE TO SUPPORT ROOTBALL.

4 INCH COMPACTION LAYER DRAINAGE LAYER

CONDUITS AND OBSTRUCTIONS NOT SHOWN. CONTRACTOR RESPONSIBLE FOR IDENTIFICATION AND MODIFICATION TO PAVEMENT SUPPORT SYSTEM PER MFG. TRAINING AND INSTRUCTION.

1  
A13

## Treepit Section

SCALE: 1/2" = 1'-0"