

2019 • 2020



VISIT

WAVERLY

& BREMER COUNTY IOWA



Waverly
CHAMBER OF COMMERCE

A Main Street Community
waverlychamber.com

ARE YOU READY FOR THE **POWER OF MORE?**



Waverly *Utilities*

Insanely-fast High Speed Internet services
FREE In-home GigaCenter that wirelessly
connects to your digital devices
No data caps!

Digital phone services for home and business
Custom HD Cable Packages to fit your
entertainment needs
No contract!

1002 Adams Parkway, Waverly | 319-559-2000 | waverlyutilities.com



6



10



13



18



35

WHAT'S INSIDE >>

FEATURES

- 05 WELCOME TO WAVERLY**
- 06 WHAT TO DO**
Arts, Entertainment, Family Fun, Golf Courses, Historical Interests, Parks & Recreation
- 10 ANNUAL CALENDAR OF EVENTS**
- 13 WHERE TO SHOP**
Shop Local, Buy Local
- 18 WHERE TO DINE & DRINK**
Restaurants, Diners, Pubs and Event & Meeting Spaces
- 22 WHERE TO STAY**
Hotels & Campgrounds
- 24 WHERE TO WORSHIP**
Waverly Churches
- 27 WARTBURG COLLEGE**
- 28 DEMOGRAPHICS & SERVICES**
- 35 DISCOVER BREMER COUNTY**
Denver, Frederika, Janesville, Plainfield, Readlyn, Sumner & Tripoli
- 43 IMPORTANT INFO**
- 44 MAPS**

PUBLISHED BY
THE WAVERLY
NEWSPAPERS
SEPTEMBER 2018

311 W. BREMER AVE.
WAVERLY, IOWA
319-352-3334
WWW.WAVERLYNEWSPAPERS.COM

Deb Weigel
PUBLISHER

Anelia K. Dimitrova
REGIONAL EDITOR

Melaine Buzynski
GENERAL MANAGER

Tracy Cummings
REGIONAL SALES MANAGER

Jeanne Roffman
ADVERTISING EXECUTIVE

Carrie Wright
GRAPHIC DESIGN

Photos courtesy of Waverly Newspapers and the Waverly Chamber of Commerce. Along with individual contributors listed below.

Thank you to our community photo contributors for this years Visitors Guide.
Jacey Meier, Cover (yellow flower); **Bobbie Blanchette**, Page 3; **Judy Gamble**, Page 5 (left); **Sheila Fox**, Page 5 (right); **Aaron Anhalt**, Page 28; **Rebecca Gade**, Page 29; **Raj Gokulppk**, Page 43



CHECK OUT OUR VISITORS CENTER
WAVERLY CHAMBER OF COMMERCE
 118 East Bremer Ave. Waverly, Iowa
 319-352-4526
www.waverlychamber.com

Edward Jones®

MAKING SENSE OF INVESTING



Jerry Woodin
Financial Advisor
203 East Bremer
Waverly, IA 50677
319-352-6773

- 401(k) Rollovers, Transfers, IRA's
- Retirement Planning & Estate Considerations
- CD's
- Stocks, Mutual Funds
- Annuities
- Tax-Advantaged Investments
- 529 College Savings Plan

www.edwardjones.com





Welcome TO Waverly

Waverly is a college river town, rich in heritage with approximately 10,000 residents located in northeast Iowa. It is a community where residents enjoy a high quality of life, friendly and progressive merchants, and a college town atmosphere.

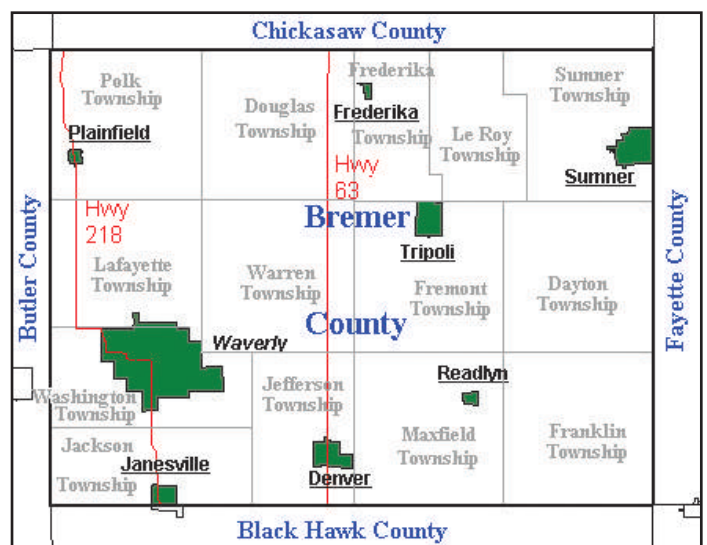
In 1859, the city was founded along the Cedar River by William Patterson Harmon, who is also credited with establishing Waverly as the Bremer County Seat. Over the years, Waverly has grown with the establishment of Wartburg College and the introduction of rail transportation. Today, Waverly is a vibrant, progressive community with a diverse commercial, agricultural, financial and industrial base.

Waverly's central business district spans the Cedar River, while numerous other businesses and industries are nestled throughout the community. Community assets include 12 miles of recreational trails, two 18-hole golf courses, the Waverly Public Library, the Waverly Health Center, the Wartburg-Waverly Sports & Wellness complex, and abundant cultural opportunities.

Waverly's downtown is a designated Main Street Iowa District. The district is home to a quality mix of service businesses, specialty shops, destination stores and restaurants. These businesses and others are part of evolving "life and leisure" business clusters.

As the 17th fastest growing city in Iowa, Waverly maintains a focus on balanced growth and is an ideal location for commercial, industrial and corporate headquarters and retail developments.

As the county seat for Bremer County, Waverly is a hub of activity. City leaders have set the course for a prosperous future through their strong commitment to a safe community and investment in parks, trails and recreation. These leaders have also formed a unique partnership to cultivate economic success through the creation of employment opportunities, a revitalized downtown district, and a sense of community which makes people want to live, work and play in Waverly.



Waverly is located in northeast Iowa and is the seat for Bremer County. More information about other communities in Bremer County can be found on pages 35-42.

WHAT TO DO



Concerts in Kohlmann

Wake up early or wake up late, whenever you wake up, adventure awaits! Waverly offers multiple outdoor opportunities on the trails, on sports fields, down the block at your neighborhood park, on an award-winning golf course, or at the pool. In Waverly, we believe in working hard to play even harder. [Learn about all the fun ways you can enjoy Waverly today!](#)

ARTS & ENTERTAINMENT

CONCERTS IN KOHLMANN

Kohlmann Park

101 1st St. NW, Waverly

www.waverlychamber.com

Waverly's summer concert series, which features the Greater Waverly Municipal Band along with other local entertainment, takes place in June & July.

WARTBURG COMMUNITY SYMPHONY

100 Wartburg Blvd., Waverly

319-352-8200

www.wartburg.edu/symphony

Since 1952, Waverly has been one of the smallest communities in the country to support a semi-professional symphony orchestra. The Symphony performs four concerts a season, September through April. The symphony is open by audition to musicians from the Waverly area and to Wartburg College students and faculty.

FAMILY FUN

WAVERLY PUBLIC LIBRARY & BUTTERFLY GARDENS

1500 W. Bremer Ave., Waverly

319-352-1223

www.waverlyia.com/library

Come stroll along the paths and enjoy native plants and flowers. There are several benches, tables, and patio areas which make the garden an ideal location for snapping photos, reading, having a picnic, or working on your laptop or tablet while connected to the library's wi-fi network.

WARTBURG-WAVERLY SPORTS & WELLNESS CENTER (THE W)

100 Wartburg Blvd., Waverly

319-352-8311

www.the-w.org.com

See page 26 for more details.


WAVERLY BOWL INN

919 4th St. SW, Waverly

319-352-4727

www.waverlybowl.com

Waverly Bowl Inn is a great place to have fun times with family and friends. Plenty of bumper bowling lanes just for kids! Also COOL Cosmic bowling, where you bowl with the lights down – great music turned up and awesome special effects lighting... it looks like a nightclub! When looking for family fun in Waverly look no further than Waverly Bowl Inn.





Wolf Creek TATTOOS

We offer the best artists in the Cedar Valley area with reasonable prices and hospital sterilized for your own protection!

Tues - Fri 12 p.m. - 7 p.m.
Saturday 10 a.m. - 7:30 p.m.
Sunday & Monday by Appointment Only

LARGEST TATTOO SHOP IN THE CEDAR VALLEY

106 W. Bremer, Waverly | 319-352-1961
www.wolfcreektattoos.com



GOLF COURSES

PRAIRIE LINKS GOLF COURSE

19 Eagle Ridge Dr., Waverly
319-483-1765
www.prairielinksgolf.com

Awarded the 18-Hole Course of the Year by the Iowa Golf Association in 2010, Prairie Links Golf Club is a semi-private country club. Members enjoy the spectacular links style golf course. Destination guest play provides visitors to Waverly the opportunity to experience one of the Cedar Valley's premiere golf courses.

WAVERLY MUNICIPAL GOLF COURSE

705 8th St. SW, Waverly
319-352-1530
www.waverlygolf.com

A progressive 18 hole public golf course. Prepare yourself for an unparalleled golfing experience. The course is a pleasure for golfers of any skill level to play. Test your accuracy with the fairways, water hazards and sand traps; they have everything you need to challenge you and improve your game.

HISTORICAL INTERESTS

BREMER COUNTY HISTORICAL MUSEUM

402 W. Bremer Ave., Waverly
319-352-2072
www.bremercountyhistoricalsociety.org

Constructed in 1862 of native timber and brick from a local kiln, the Bremer County Historical Museum is a three-story brick structure and was the first large hotel and stagecoach stop in the area. Succeeding the hotel, the building housed the CaPhenin Chemical Co., a pill factory owned by the Dr. Frank Osincup family. Now the building houses many treasures from

the area and tells of tales of life in Waverly and Bremer County. With artifact displays, theme rooms take visitors back to a time we no longer know. The museum is open May through October on Monday through Saturday from 1:30 to 4 p.m. and on Sunday from 2 to 4 p.m. Admission is \$2 for adults and \$1 for children.

IRA STURDEVANT HOUSE

502 1st St. SW, Waverly

Built of brick in 1855 and 1856, the Ira and Asenath Sturdevant house is the oldest surviving dwelling in Waverly, Iowa. Sold outside the Sturdevant family after Ira's widow, Asenath, died in 1867, descendants repurchased it at a sheriff's sale on April 14, 2009, loaning the money to the Iowa Historic Preservation Alliance (now Preservation Iowa) who will own it until it has its own separate non-profit organization.

VETERANS TRIBUTE

Bremer Ave. & 4th St. SW, Waverly
www.waverlyvets.us/veterans-tribute.html

Located on the corner of West Bremer Avenue and Fourth St. SW, the Waverly Area Veterans Tribute is the local site for many celebrations honoring veterans. An area in front of the tribute presents engraved bricks memorializing all veterans.



Ira Sturdevant House

Waverly Golf Course

More than a golf course

18 HOLES + CART FOR \$26 • MON. - FRI. BEFORE 2 PM
705 8TH ST. SW, WAVERLY, IA • 319.352.1530
WWW.WAVERLYGOLF.COM

KAISER CORSON Funeral Homes

"Our Way Of Life Since 1901"



Waverly, IA 319-352-1187
Denver, IA 319-984-5379
Readlyn, IA 319-279-3551
Shell Rock, IA 319-885-4321

www.kaisercorson.com

PARKS & RECREATION

Waverly Outdoor Pool



The City of Waverly manages 25 individual parks. From play units to basketball courts and rugby fields, Waverly's parks have something for everyone. For a complete listing of parks, visit www.waverlyia.com.

CITY PARKS

PELIKAN PARK

1401 Cedar Lane Dr., Waverly

Along the back waters of the Cedar River on Cedar Lane east of Horton Road, Pelikan Park is a popular area for fishing or ice skating.

BROOKWOOD PARK

415 6th Ave. SE, Waverly

A large area along the Cedar River. It is home to the Green Bridge Disc Golf Course, has several mature trees, open space and has an undeveloped area to the east along the river, populated with walking trails. There is a non-motorized boat ramp, and fishing at this park is very popular.

MEMORIAL PARK

403 5th Ave. SW, Waverly

This is Waverly's main city park. The park features Kid's Kingdom, a large wooden play unit, three lighted ball diamonds, and

an outdoor pool featuring two water slides and a skate park. Memorial Park is also home to the annual Bremer County Fair.

SOUTH RIVERSIDE PARK

701 1st St. SW, Waverly

Running along the Cedar River south of the Fire Station, this park has a recreational trail, shelter, playground equipment and beautiful open area to the south.

KOHLMANN PARK

101 1st St. NW, Waverly

Kohlmann Park provides an ideal location for the riverfront amphitheater, as it adequately serves 400-500 residents each Thursday evening in the summer for the municipal band concert series the Waverly Chamber puts on every year. The centralized location also features connecting trails, river access, well shaded seating, public restrooms and play equipment for patrons to enjoy.

Shades of Rhythm Amphitheater

Shades of Rhythm performance amphitheater was constructed the summer of 2014 on the Cedar River in Kohlman Park, and offers a special gathering space for all to enjoy in the heart of our community. The amphitheater acts as an open air gathering space which welcomes citizens and visitors alike to partake in a myriad of public performing arts events as well as private celebrations.

CrawDaddy 319.352.9129
OUTDOORS 207 E BREMER AVE
 WAVERLY, IA 50677


 camping
 kayaking


 backpacking
 outdoor cooking


 safety clinics
 guided trips

WWW.CRAWDADDYOUTDOORS.COM



Waverly Rail Trail

PARKS & RECREATION

OUTDOOR RECREATION

WAVERLY RAIL TRAIL

The Waverly Rail Trail features several amenities, including seven bridges, three underpasses, and abundant flora and fauna typical of Iowa's four seasons. It utilizes the former Union Pacific Railroad right-of-way. Trail users will find parking, a picnic shelter, and benches at 400 1st Avenue SE as well as restroom facilities at the nearby Kwik Star. Parking is available at the Trailhead at 6th Avenue NW and Killdeer Avenue. Traveling west to east, the Waverly Rail Trail crosses the Cedar River via a double wide 500' bridge, traverses downtown Waverly and continues through the countryside to U.S. Highway 63 where the Denver Jefferson Trail connects to the City of Denver to the south and where the Readlyn Grump Trail takes users east to the City of Readlyn. ***see map on page 42**

WAVERLY OUTDOOR POOL

510 5th Ave. SW, Waverly
319-352-6249

www.waverlyia.com/leisureservices/pool

Enjoy Waverly's outdoor public pool from Memorial Day weekend through late August. Featuring two water slides and a

kiddie pool with large floatables, the pool offers great family fun and relaxation in the heat of the summer season.

CRAWDADDY OUTDOORS

207 E. Bremer Ave., Waverly
319-352-9129

www.crawdaddyoutdoors.com

Located in downtown Waverly, CrawDaddy Outdoors offers outdoor equipment rentals and adventure packages for a variety of recreational activities throughout the year.

WAVERLY-SHELL ROCK SOCCER COMPLEX

Waverly-Shell Rock Soccer Association
202 Cedar River Parkway, Waverly

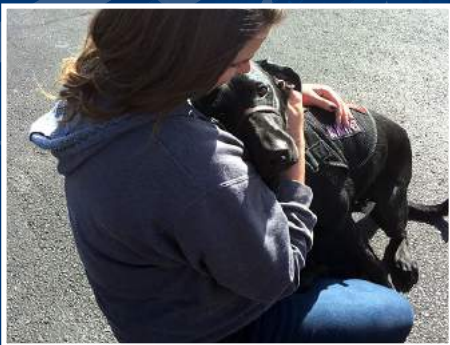
The W-SR Soccer Complex includes nine full-size competition fields with one of them being lit. It includes permanent restrooms, concessions and ample parking.

PETSAFE® OFF-LEASH DOG PARK

www.waverlyia.com/leisureservices

The Waverly PetSafe® Off-Leash Dog Park is a new amenity to Waverly area residents and visitors. The park is located in southeast Waverly near 8th Street SE and 17th Ave SE.

SERVICE DOGS for disabled veterans and children with autism



RETRIEVING
FREEDOM INC

2 miles west of Waverly on Hwy 3

*"Where some see limitations,
we bring opportunities"*

Visits and tours of the facility
available. 319-505-5949

www.retrievingfreedom.org

CALENDAR OF EVENTS

Waverly Art Walk



Throughout the year, Waverly and surrounding communities plan a variety of events for people of all ages to enjoy. Visit our online calendar of events for more info at waverlychamber.com.

FEBRUARY

CANDLELIGHT SKI

Waverly Rail Trail

www.waverlyia.com

Enjoy a candlelit ski on the Waverly Rail Trail during the Annual Candlelight Ski event which takes place the 1st Saturday in February. 1.1 miles of the trail are illuminated for skiing and walking with over 400 luminaries, beginning at the trailhead located behind Kwik Star East, 400 E. Bremer Avenue. Complimentary Nestle hot cocoa is provided at the bonfire turn around. Snow shoes and cross country skis are available for rent at CrawDaddy Outdoors.

MARCH

SPRING MIDWEST HORSE SALE

Waverly Sales Barn

2212 5th Ave. NW, Waverly

www.waverlysales.com

One of the oldest and largest semi-annual horse sale auctions in North America, held the last week in March.

For a complete listing of events, visit us online at waverlychamber.com

MAY

ART WALK

Kohlmann Park

101 1st St. NW, Waverly

www.waverlyartwalk.com

Art Walk is Waverly's annual juried fine arts and crafts show. It is held the first Saturday in May at Kohlmann Park along the beautiful Cedar River in downtown Waverly. Artists from the tri-state area come to Kohlmann Park to sell their works of media ranging from: basketry, jewelry, pottery, photography, painting, and much more. Artists' booths line the winding sidewalk with a perfect view of the Cedar River, making a stroll through the park a pleasant way to view and purchase the artists' creations. There is also live music, food vendors, kids art activities and much more! Open to the public and people of all ages are invited to enjoy the day surrounded by artistic creations!

SPRING RETAIL EVENT

Waverly Merchants

www.waverlychamber.com

The First Saturday in May, Waverly merchants host a Spring Shopping Event in conjunction with the Waverly Art Walk, featuring new spring merchandise and fun! Shop your way around town and enjoy spring savings, sweet treats, art and more!

WARTBURG & W-SR GRADUATIONS

Wartburg College

& W-SR High School, Waverly

Graduation ceremonies are held Memorial Day weekend.

WAVERLY'S FARMERS MARKET

South Riverside Park

202 1st Ave. SE, Waverly

Every Saturday, May - October

Every Tuesday starting in June

Offering locally-grown produce, crafts, pottery, baked goods, fresh eggs, honey, canned jams, plants, hanging planters and seasonal items. Saturday hours are from 8:30 to 11:30 a.m. and Tuesday hours are from 3 to 6 p.m.

JUNE

CONCERTS IN KOHLMANN

Kohlmann Park

101 1st St. NW, Waverly

www.waverlychamber.com

Waverly's summer concert series, which features the Greater Waverly Municipal Band along with other local entertainment, takes place in June & July. Entertainment begins each Thursday evening at 6:30 p.m. in Kohlmann Park. Free popcorn & lemonade is available for all to enjoy along with food from a variety of vendors throughout the season.

CALENDAR OF EVENTS

WAVERLY CITY WIDE GARAGE SALES

Waverly

Second weekend in June.

GRUMP DAYS

Readlyn, Iowa

www.readlyn.com

Readlyn's annual town event held the third weekend in June.

JULY

FOURTH OF JULY

Frederika, Iowa

First week in July.

SHELL ROCK FOURTH OF JULY CELEBRATION

Downtown Shell Rock, Iowa

www.shellrockiowa.org

Shell Rock is known for its annual Fourth of July Celebration, which includes a parade and a spectacular fireworks display. Enjoy the beer garden, live music, food vendors and more. Held the first week of July.

PLAINFIELD DAYS

Plainfield, Iowa

www.facebook.com/Plainfield-Days

The annual celebration in Plainfield held the second weekend in July.

RIDICULOUS DAYS

Waverly Merchants

www.waverlychamber.com

Shop ridiculously low prices on quality products from both local merchants and sidewalk vendors, during Waverly's annual Ridiculous Days! Mark your calendars and join the shopping fun on the second Saturday in July for this exciting event. The ridiculousness begins bright and early at 7:00 a.m.

SUMNER DAYS

Sumner, Iowa

www.mysumneriowa.com

Annual Sumner Days celebration held the third weekend in July.

HERITAGE DAYS

Bremer County Fairgrounds

717 5th Ave. SW, Waverly

www.waverlyheritagedays.com

Waverly Heritage Days is Waverly's town celebration. Lasting for three days during the third weekend in July, the festival kicks off Friday and continues on through the weekend. On Saturday morning, thousands enjoy the parade starting on Fifth Avenue NW and ending at the Fairgrounds. The entertainment continues at the Fairgrounds with activities for kids and families followed by a live band and fireworks.

JANESVILLE DAYS

Janesville, Iowa

www.janesvilledays.org

Annual Janesville Days celebration is held the end of July.

AUGUST

BREMER COUNTY FAIR

Bremer County Fairgrounds

717 5th Ave. SW, Waverly

www.bremercountyfair.com

A Blue Ribbon Fair since 1875, the Bremer County Fair celebrates the best in local livestock and crafts. Also, don't miss the annual truck and tractor pulls, commercial and local exhibits, carnival, petting zoo and various contests, performances and concerts. Bremer County Fair is held the first week in August.

TRIPOLI DAYS

Tripoli, Iowa

www.facebook.com/Tripoli-Days

Annual Tripoli Days is held the first weekend in August.

BREAK-AWAY DAYS

Denver, Iowa

www.facebook.com/Denver-Break-Away-Days

Annual Denver Break-Away Days is held the third weekend in August.

SEPTEMBER

FALL RETAIL EVENT

Waverly Merchants

www.waverlychamber.com

Shop fall retail open houses during Waverly's annual Fall Fest! Rake in the savings and see all the special items retailers have to offer for the upcoming fall season. This is a great chance for retailers to showcase fall merchandise and attract shoppers to their store with special discounts and savings.

OKTOBERFEST

Downtown Waverly

www.waverlyoktoberfest.com

Family friendly event that features live music, food and beverage gardens, and a family fun zone.

OCTOBER

FALL MIDWEST HORSE SALE

Waverly Sales Barn

2212 5th Ave. NW, Waverly

www.waverlysales.com

One of the oldest and largest semi-annual horse sale auctions in North America, held the first week in October.

JACK-O-LANTERN NIGHT

Downtown Waverly

www.waverlychamber.com

This event is for all the little ghosts and goblins to join the fun and fill their bags with treats provided by participating downtown merchants during Waverly's annual Jack-O-Lantern Night! Held the Thursday before Halloween.

CALENDAR OF EVENTS

NOVEMBER

HOLIDAY RETAIL EVENT

Waverly Merchants

www.waverlychamber.com

Shop Waverly first during the holiday season. Participating Waverly retailers have organized an area-wide shop local holiday campaign for the entire holiday shopping season. From special savings, to wish list creation and Santa with his live reindeer, the holiday shopping season has something for everyone in Waverly! Holiday open houses kick off this month long celebration the 3rd weekend in November.

CANDLELIGHT WALK

Waverly Rail Trail

www.waverlyia.com

Enjoy a peaceful stroll on the Waverly Rail Trail illuminated by over 400 luminaries with LED candles the 2nd Saturday in November. Walk about 1.2 miles to the Bonfire turnaround and enjoy a cup of Nestle Hot Cocoa and some other delicious treats before walking back to the start. The Candlelight Walk takes place on the Waverly Rail Trail, beginning at the trailhead located behind Kwik Star East, 400 E. Bremer Avenue.

DECEMBER

SANTA'S ARRIVAL

Kohlmann Park

www.waverlychamber.com

Welcome Santa to Waverly at his house in Kohlmann Park the first Saturday in December! Bring your wish list and a camera to capture priceless memories with the Jolly Ol' Fella himself! You can also mail a letter to Santa by dropping it in his mailbox at Kohlmann Park. Be sure to include your full name and return address to ensure that Santa can reply!

CHRISTMAS WITH WARTBURG

100 Wartburg Blvd., Waverly

www.wartburg.edu/christmas

Christmas with Wartburg is a traditional celebration, as a college of the Evangelical Lutheran Church in America, to proclaim the Good News of Christ's birth in word and song. The four-concert series includes on and off campus performances attended by nearly 7,000 people each year. The program features the talents of the Wartburg Choir, Castle Singers, and Wind Ensemble, which tour

annually and travel abroad every third year, Ritterchor, St. Elizabeth Chorale, Kantorei, and Handbell Choir. Held the first weekend in December.

DENVER'S OLD-FASHIONED CHRISTMAS

Denver, Iowa

www.cityofdenveriowa.com

Annual Denver Christmas celebration features different events and Festival of Trees.

CHRISTMAS GREETINGS ON MAIN

Downtown Waverly

www.waverlychamber.com

Hosted by the Waverly Chamber of Commerce and Waverly Merchants, Christmas Greetings on Main features decorated store fronts along historic Bremer Avenue that come alive with Christmas scenes throughout the evening. Be sure to see Santa listening to children's requests at his home in Kohlmann Park. Warm up with a cup of hot cocoa at several "Hot Spots" located throughout downtown. Live ice sculpture carvings, a festival of trees and free horse drawn trolley rides are just some of the many highlights of this annual celebration held the second Thursday in December.

SANTA & HIS LIVE REINDEER

Kohlmann Park

101 1st St. NW, Waverly

www.waverlychamber.com

Gather around as Santa's reindeer join him in Kohlmann Park! A few of Santa's magical friends will touch down in Waverly before flying Santa back to the North Pole for Christmas! Be sure to come & bring your camera! This takes place the 3rd Saturday in December.



Christmas Greetings on Main

WHERE TO SHOP

SHOP LOCAL, SHOP WAVERLY!

W Denotes Waverly Chamber of Commerce Members

2 GUYS INTERIOR FOCUS **W**

1200 10th Ave. SW, Waverly
319-352-5652
www.2guysinteriorfocus.com

AUSTIN'S INTERIOR & DESIGN **W**

207 W. Bremer Ave., Waverly
319-352-3296
www.austinsinteriors.com

B.E. MICK'S WOMEN'S FASHIONS **W**

123 E. Bremer Ave., Waverly
319-352-2147
www.bemicks.com

THE BEAUTY BAR

91 E. Bremer Ave., Waverly
319-352-1528
www.thebeautybarwaverly.com

BELLA NAILS & BOUTIQUE **W**

103 E. Bremer Ave., Waverly
319-352-4214
www.bellawaverly.com

B&J FLOORING **W**

112 W. Bremer Ave. Suite D, Waverly
319-352-2457
www.bandjflooring.com

BLUSH LEDET SALON SPA & BOUTIQUE

205 20th St. NW, Waverly
319-483-5267

BO STUDIO. 121 **W**

121 E. Bremer Ave., Waverly
319-352-3211
www.bostudio121.com

BUTCHER BLOCK

101 E. Bremer Ave., Waverly
319-559-2166

CEDAR RIVER QUILTING

2673 Edgebrook Dr., Waverly
319-987-2920
www.cedarriverquilting.net

CASEY'S GENERAL STORE **W**

1312 W. Bremer Ave., Waverly
313-352-1304
www.caseys.com

CRAWDADDY OUTDOORS **W**

207 E. Bremer Ave., Waverly
319-352-9129
www.crawdaddyoutdoors.com

DESIGN 360 AT DECORATING DEN INTERIORS **W**

221 E. Bremer Ave., Waverly
319-352-1379
www.decoratingden.com

DOLLAR TREE

2121 4th St. SW, Waverly
319-352-8849
www.dollartree.com

ECKER'S FLOWERS & GREENHOUSE

410 5th St. NW, Waverly
319-352-1910
www.eckersflowers.com

FAREWAY STORES, INC **W**

222 W. Bremer Ave., Waverly
319-352-4319
www.farewaystores.com

FIBERWORKS NEEDLEWORK

108 E. Bremer Ave., Waverly
319-352-5464

GADE'S APPLIANCE **W**

223 W. Bremer Ave., Waverly
319-352-3128
www.gadesappliance.com

GOLDEN THISTLE **W**

114 E. Bremer Ave., Waverly
319-239-2648

GOODWILL INDUSTRIES **W**

400 Technology Place, Waverly
319-234-4626
www.visitgoodwill.com

HY-VEE FOOD STORES **W**

1311 4th St. SW, Waverly
319-352-1365
www.hy-vee.com

JIM'S SPORT SHOP

105 E. Bremer Ave., Waverly
319-352-4701
www.jimssportsshop.com

WHERE TO SHOP

KATALYST YOGA & BOUTIQUE

99 E. Bremer Ave., Waverly
641-456-8331

KWIK STAR

400 E. Bremer Ave., Waverly
319-352-2155

500 W. Bremer Ave., Waverly
319-352-1176

2501 4th St. SW, Waverly
319-352-1218

www.kwiktrip.com

LEGACY PHOTOGRAPHY

122 E. Bremer Ave., Waverly
319-352-0001
www.legacyphotographyiowa.com

LIQUOR & TOBACCO OUTLET

622 W. Bremer Ave., Waverly
319-352-9455

LOVE & LACE

220 E. Bremer Ave., Waverly
319-352-0243
www.loveandlace.net

MEYER PHARMACY

110 10th St. SW, Waverly
319-352-3120
www.meyerpharmacy.com

MILLER TRUE VALUE

1201 4th St. SW, Waverly
319-352-1386
www.truevalue.com/waverly

NEIGHBORHOOD HOME

1305 W. Bremer Ave., Waverly
319-352-4888
www.theneighborhoodhome.com

NEIGHBORHOOD CLOSET

1281 4th St. SW, Waverly
319-559-2193
www.theneighborhoodcloset.com

NEXT GENERATION WIRELESS

1810 4th St. SW, Waverly
319-352-6200
www.ngwtoday.com

ONE SOLUTION

112 E. Bremer Ave., Waverly
319-242-4200
www.1sol.com

PINK DAISY BOUTIQUE

97 E. Bremer Ave., Waverly
319-559-0096

POSHLY PICKED BOUTIQUE

89 E. Bremer Ave., Waverly
319-269-2480

THE PRINTERY & NORTHWOOD PAPER & SUPPLY CO.

215 W. Bremer Ave., Waverly
319-352-5822
www.printery.net

RACK 'EM UP PROMOTIONS

107 E. Bremer Ave., Waverly
319-352-9475
www.rackemuppromotions.com

RENEWED PURPOSE

104 E. Bremer Ave., Waverly
319-830-4306

ROOT

100 E. Bremer Ave., Waverly
319-290-5746
www.rootpretty.com

THE MIXING BOWL

214 E. Bremer Ave., Waverly
**Opening Fall 2018*

THE SEWING ROOM

1607 Hickory Heights Dr., Waverly
319-352-6883

TENENBAUM'S JEWELRY

219 E. Bremer Ave., Waverly
319-352-4112
www.tenenbaumsjewelry.com

THOMPSON SHOES

113 E. Bremer Ave., Waverly
319-352-1079

TIEDT NURSERY

2419 E. Bremer Ave., Waverly
319-352-0418
www.tiedtnurseryandlandscape.com

TREASURED QUILTING & GIFTS

115 W. Bremer Ave., Waverly
319-352-4355

TRINKETS & TOGS

114 10th St. SW, Waverly
319-352-8029
www.larrabeecenter.org

VERIZON WIRELESS/ BE MOBILE

2401 4th St. SW, Waverly
319-483-6828
www.bemobile.com

WALGREENS

320 W. Bremer Ave., Waverly
319-596-1085
www.walgreens.com

WAL-MART

2700 4th St. SW, Waverly
319-352-5260
www.walmart.com

WASH HOUSE SALON & SPA

409 W. Bremer Ave., Waverly
319-352-4140

WAVERLY HEALTH CENTER GIFT GARDEN

312 9th St. SW, Waverly
319-352-4120
www.waverlyhealthcenter.org

WILD CARROT

215 E. Bremer Ave., Waverly
319-352-2215

Where to SHOP



B.E. Mick's, a family-owned business for over 50 years, offers you a unique selection of affordable fashions and a friendly, honest sales staff that will help you with your every need. Located in downtown Waverly, B.E. Mick's features classic and updated clothing for women of all ages as well as accessories to complete your look

UNIQUE FASHIONS - MOST NOT SEEN IN MAJOR STORES

B.E. Mick's

Missy, Missy Petite & Women's Size Fashions
DOWNTOWN WAVERLY

123 E. Bremer 319-352-2147

Hours: Mon.-Fri. 9-5:30 Thurs. night 'til 7; Sat. 9-5

www.bemicks.com



Trinkets & Togs

"The Biggest Little Thrift Store"

Store Hours:

Monday, Tuesday, Wednesday, and Friday 9 a.m.—7 p.m.,
Thursday 9 a.m.—8 p.m., and Saturday 9 a.m.—6 p.m.

114 10th Street SW, Waverly • 352-8029



Retail Nursery & Gift Shop

- Landscape Services
- Retaining Walls
- Patios
- Seeding & Sodding

Hwy 3 East, 2419 East Bremer Ave., Waverly
319-352-0418



Bill Root

107 E. Bremer Ave.
Waverly, IA 50677

Phone: (319) 352-9475
Cell: (319) 240-8250

www.rackemuppromotions.com
rackemupbill@gmail.com



Hy-Vee

EMPLOYEE OWNED

1311 4TH ST. SW, WAVERLY, IA • (319)352-1365
WWW.HY-VEE.COM

DOWNLOAD YOUR HY-VEE APP.

- CREATE AND SAVE YOUR GROCERY LIST
- FUEL SAVER AT YOUR FINGERTIPS
- CHECK OUT WEEKLY SALES
- SCAN YOUR BOTTLE, REFILL YOUR PRESCRIPTION

BAKERY/SPECIALITY CAKES
CHINESE
FLORAL SERVICE COUNTER
WINE & SPIRITS
CATERING/DINING
FRESH MEAT & SEAFOOD
PHARMACY
FRESH PRODUCE
SALAD BAR
HEALTH MARKET



WOMEN'S CLOTHING
JEWELRY & ACCESSORIES

FRESH & SILK
FLORAL ARRANGEMENTS

HOME DECOR
GIFTWARE
INSPIRATIONAL GIFTS

WEDDING RENTAL
MEN'S FORMAL WEAR
WEDDING FLOWERS

love & lace

220 E Bremer Ave (319) 352-0243
www.loveandlace.net

Where to SHOP



BEHIND EVERY PROJECT IS A

True Value®



WWW.TRUEVALUE.COM/WAVERLY

WWW.THECENTREHALL.COM

Miller True Value & Just Ask Rentals

1201 4TH STREET SW, WAVERLY, IA
319-352-1386

MON-FRI: 7:30-6:00 | SAT: 7:30-5:00 | SUN: NOON-4:00

RELAX

Let us pamper you.

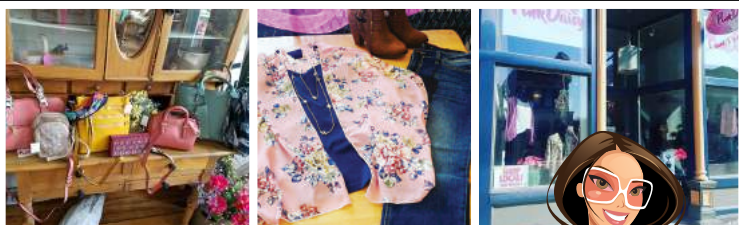
- Shellac Nails
- Dipping Powder
- Acrylic Nails
- Pedicures
- Manicures

Jimmy's NAILS & SPA

1810 4TH ST SW #103, WAVERLY
(319) 352-8933



Wednesday & Friday 10 a.m. - 5 p.m.
Thursday 10 a.m. - 7 p.m. | Saturday 10 a.m. - 3 p.m.
114 E. Bremer Avenue, Waverly, Iowa
319.269.2648



THE Pink Daisy Boutique

ONE OF THE BEST BOUTIQUES IN WAVERLY!



97 East Bremer, Waverly | (319) 559-0096
Tue-Fri 10am - 5:30pm | Sat 10am-4pm


Root

NATURAL ORGANIC VEGAN CRUELTY-FREE
GLUTEN-FREE NON-TOXIC Beauty

MAKEUP | SKIN | HAIR | BODY | HOME

100 E BREMER AVE • WAVERLY, IA • MADE IN USA
WWW.ROOTPRETTY.COM

Where to SHOP



Poshly Picked
BOUTIQUE
WAVERLY, IOWA

89 E. BREMER AVE, WAVERLY




Wild Carrot
SOUPS • SANDWICHES SWEETS • SHOPPING

215 E BREMER AVE, WAVERLY | 319-352-2215
TUESDAY - SATURDAY: 8AM - 4PM

SHOP & EAT
OPEN FOR BREAKFAST & LUNCH



TOP PLACE TO VISIT IN IOWA!



LIT & NON-LIT BUILDING & FREE STANDING SIGNS
INTERIOR SIGNS • ELECTRONIC DISPLAYS
CUSTOM SIGN DESIGN • LED CONVERSIONS
VINYL & VEHICLE GRAPHICS & MORE!

1020 Wilbur Ave. Waterloo, IA www.naglesigns.com  



319.233.4604 • 800.728.4604
Design. Manufacture. Install. Service.

WHERE TO DINE & DRINK



East Bremer Diner

RESTAURANTS, DINERS & PUBS

W Denotes Waverly Chamber of Commerce Members

APPLEBEE'S GRILL **W**

2500 4th St. SW, Waverly
319-352-9240
www.applebees.com

ASIAN GARDEN

116 E. Bremer Ave., Waverly
319-352-5253

BEACH HOUSE BAR & GRILL

110 E. Bremer Ave., Waverly
319-483-9095

BURGER KING

927 4th St. SW, Waverly
319-352-3311
www.bk.com

CHINA BUFFET

1233 4th St. SW, Waverly
319-352-4006

DELL'S DINER

404 W. Bremer Ave., Waverly
319-352-1984

THE DEN **W**

Inside Saemann Student Center
100 Wartburg Blvd., Waverly
319-352-8303
www.wartburg.edu/dining

DUOS COFFEE & ICE CREAM **W**

805 W. Bremer Ave. Ste. 1, Waverly
319-352-2458

EAST BREMER DINER **W**

117 E. Bremer Ave., Waverly
319-352-2455
www.eastbremerdiner.com

EAST CHINA

309 W. Bremer Ave., Waverly
319-483-9999

EL SOL MEXICAN RESTAURANT

3401 E. Bremer Ave., Waverly
319-352-1590

EL TAPATIO MEXICAN RESTAURANT

1810 4th St. SW, Waverly
319-352-1292

GUSTO **W**

19 Eagle Ridge, Waverly
319-352-0444
www.gustowaverly.com

HOBSON'S DAIRY QUEEN **W**

122 4th St. SW, Waverly
319-352-3256
www.dairyqueen.com

HY-VEE KITCHEN **W**

1311 4th St. SW, Waverly
319-352-1365
www.hy-vee.com

JIMMY JOHNS **W**

620 W. Bremer Ave., Waverly
319-352-2100
www.jimmyjohns.com

JOE'S KNIGHT HAWK RESTAURANT

1002 W. Bremer Ave., Waverly
319-352-2862
www.joesknighthawk.com

KONDI TOREI **W**

Inside Vogel Library
100 Wartburg Blvd., Waverly
319-352-8505
www.wartburg.edu/dining

MCDONALD'S **W**

1203 4th St. SW, Waverly
319-352-6977
www.mcdonalds.com

OTHER PLACE II **W**

821 W. Bremer Ave., Waverly
319-352-4742
www.theotherplace.com

PIZZA HUT

1203 W. Bremer Ave., Waverly
319-352-5591
www.pizzahut.com

PIZZA RANCH

2020 W. Bremer Ave., Waverly
319-352-2222
www.pizzaranch.com

WHERE TO DINE & DRINK

POKEY'S SPEAKEASY

108 2nd St. NE, Waverly
319-240-6799

SASQUATCH JACKS **W** HIDEAWAY BARROOM & GRILL

118 10th St. SW, Waverly
319-559-2444
www.sasquatchjacks.com

SCOOTER'S COFFEE

Fareway Parking Lot
*Opening 2019

SUB CITY

311 E. Bremer Ave., Waverly
319-352-1044

SUBWAY **W**

517 E. Bremer Ave., Waverly
319-352-9014
www.subway.com

THE DIRTY DOG AMERICAN BAR & GRILL

1016 W. Bremer Ave., Waverly
319-352-8819
www.dirtydogwaverly.com

THE MIXING BOWL **W**

214 East Bremer Ave., Waverly
*Opening Fall 2018

THE POUR HOUSE **W**

111 E. Bremer Ave., Waverly
319-352-2000

TACO JOHNS

617 W. Bremer Ave., Waverly
319-352-5055
www.tacojohns.com

WATERSTREET GRILL

102 W. Bremer Ave., Waverly
319-352-1493

WAVERLY AREA

VETERAN'S POST **W**

1300 4th St. NW, Waverly
319-483-9287
www.waverlyvets.us

WAVERLY BOWL INN

915 4th St. SW, Waverly
319-352-4724
www.waverlybowl.com

WAVERLY GOLF & COUNTRY CLUB **W**

915 8th St. SW, Waverly
319-352-3855
www.waverlycc.com

WAVERLY SALES COMPANY **W**

2212 5th Ave. NW, Waverly
319-352-2804
www.waverlysales.com

WILD CARROT **W**

215 E. Bremer Ave., Waverly
319-352-2215

WOODEN FOOT SALOON **W**

98 E. Bremer Ave., Waverly
319-352-9878
www.thewoodenfootsaloon.com

ZESTY ORANGE **W**

Inside The W
100 Wartburg Blvd., Waverly

ZIGGY'S DOMINOS PIZZA

501 W. Bremer Ave., Waverly
319-483-9444
www.dominos.com



Wild Carrot



Wooden Foot Saloon

Where to DRINK & DINE

order ON THE GO with THE DOMINO'S APP

DOWNLOAD OUR DOMINO'S APP AND ORDER ON THE GO!

Ziggy's Domino's Pizza
319-483-9444

CARRY OUT | DELIVERY | DINE IN
 WWW.DOMINOS.COM

501 W BREMER AVE, WAVERLY, IA

good times start at the ebd

EAST BREMER STEAK HOUSE Diner

319-352-2455 • 117 E BREMER AVE., WAVERLY
 EASTBREMERDINER.COM

Sunday: 10am - 2pm Buffet
 2pm - 8pm Full Menu
 Mon-Wed: 11am - 8pm
 Thurs-Sat: 11am - 9pm

2014 CERTIFICATE OF EXCELLENCE
 tripadvisor

f t

Serving the Waverly area for over 37 years.
 821 WEST BREMER AVENUE, WAVERLY, IA | (319) 352-4742

Join Your Friends, Wet Your Whistle, and Enjoy Our Casual Atmosphere!

Mouth watering pizzas, burgers, tenderloins, wings or any of the great selections on our menu!

OPEN: 11AM MONDAY - SUNDAY

WWW.THEOTHERPLACE.COM

DQ

Orange Julius

HOBSON'S DAIRY QUEEN
 122 4th St. SW, Waverly • 319-352-3256
 Hours: M-F 10:30-10:30
 Sat. & Sun. 11:00-10:30
 We Accept Visa & Mastercard

SUB CITY
 DEPOT INC.
 311 E BREMER AVE, WAVERLY, IA
 (319) 352-1044

WE TAKE RESERVATIONS, WALK-INS WELCOME, GOOD FOR GROUPS & KIDS, TAKE OUT, CATERING AND OUTDOOR SEATING

Satisfaction Served Fresh
 MON-SAT: 11 AM - 8 PM
 SUN: 11 AM - 7 PM

f t

WAVERLY AREA VETERANS POST

Open to the Public

Lounge Hours
 Mon-Thurs 4-9 p.m.
 Friday 4-11 p.m.
 & Sat. 2-11 p.m.

Waverly Area Veterans Post
 "Where Patriots Gather"

1300 4th St. SW, Waverly, IA | 319-483-9287
 www.waverlyvets.us

EVENT & MEETING SPACES



COBBLESTONE INN
208 E. Bremer Ave., Waverly
319-352-1311
www.staycobblestone.com

**PRAIRIE LINKS
EVENT CENTER**
19 Eagle Ridge Dr., Waverly
319-242-7675
www.pairielinkseventcenter.com

**WAVERLY GOLF
& COUNTRY CLUB**
705 8th Ave. SW, Waverly
319-352-3855
www.waverlycc.com

WARTBURG COLLEGE
100 Wartburg Blvd., Waverly
319-352-8286
www.wartburg.edu/studentcenter

THE CENTRE HALL
1201 4th St. SW, Waverly
319-352-1386
www.thecentrehall.com

**WAVERLY
CIVIC CENTER**
200 1st St. NE, Waverly
319-352-6263
www.waverlyia.com

**WAVERLY PUBLIC
LIBRARY**
1500 W. Bremer Ave., Waverly
319-352-1223
www.waverlyia.com/library

**WAVERLY AREA
VETERANS POST**
1300 4th St. NW, Waverly
319-483-9287
www.waverlyvets.us

**TENDRILS ROOFTOP
GARDENS**
312 9th St. SW, Waverly
319-352-4120
www.waverlyhealthcenter.org



**BIG CITY QUALITY,
SMALL TOWN VALUES**



208 East Bremer Avenue, Waverly, IA | (319) 352-1311
WWW.STAYCOBBLESTONE.COM

WHERE TO STAY

Cobblestone Inn & Suites



HOTELS COBBLESTONE INN & SUITES ^W

208 E. Bremer Ave., Waverly
319-352-1311
www.staycobblestone.com

QUALITY INN ^W

404 29th Ave. SW, Waverly
319-352-0399
www.choicehotels.com

RED FOX RENAISSANCE INN

1900 Heritage Way, Waverly
319-352-5330

STAR MOTEL

3303 E. Bremer Ave., Waverly
319-352-4434

SUPER 8 MOTEL ^W

301 13th Ave. SW, Waverly
319-352-0888
www.super8.com/waverly

RESTAURANT & LOUNGE

STAR MOTEL
3303 E Bremer Ave, Waverly, IA
(319) 352-4434



www.choicehotels.com

404 29TH AVE SW, WAVERLY, IA | (319) 352-0399

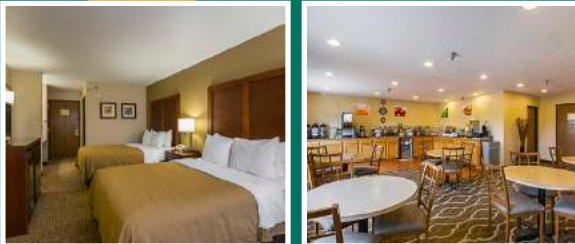


www.super8.com/Waverly

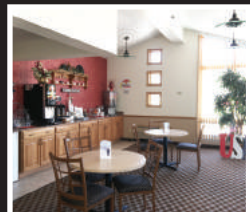
301 13TH AVE, WAVERLY, IA | (319) 352-0888

NEWLY RENOVATED ROOMS & NEW ELEVATOR

- Hot Breakfast
- Indoor Pool & Spa
- Fitness Center
- Sauna
- Free Wi-Fi
- Pet Friendly



- ### NEWLY UPDATED ROOMS
- Superstart Breakfast
 - Refrigerator
 - Microwave
 - Free Wi-Fi
 - Free truck, bus or RV parking
 - Handicapped-Accessible



WHERE TO STAY



CAMPGROUNDS

Campgrounds are open May 1 through October 31. The park gate is closed to vehicle traffic after October 31, but remains open to foot traffic. Hunting is allowed from November 1 to January 10 at Cedar Bend, North Cedar and North Woods Parks. The parks can also be used by cross-country skiers, snowshoers, birders, etc. during the winter months. Each park has electric and tent camping sites, depending on user preference. There are no designated sites and campsites are available on a first-come, first-serve basis. Reservations are not taken and the sites feature self-registration at the park kiosk. Sites contain 20 to 30 amp outlets. **For a complete listing of Bremer County camping facilities visit www.co.bremer.ia.us.**



4-Paw Accommodations at Rock River Pet Resort

Dog Boarding
Doggie Day Care
Grooming

New online booking:
rockriverpetresort.weebly.com

1148 230th Street, Waverly, IA
319-352-3200

Camping is available at four county parks:

CEDAR BEND PARK

1267 250th St., Waverly

Cedar Bend Park offers a variety of recreational opportunities that include four miles of trails that wind through forests, fields and along the river's edge. Three picnic and playground areas provide day-use recreation. There are three sand volleyball courts and horseshoe pits at the park, as well as two shelters with electricity.

ALCOCK PARK

1171 Midway Ave., Frederika

Canoers and fishing enthusiasts obtain access to the Wapsipinicon River through the park's shoreline or the boat ramp. The campground has over fifty electrical sites and two wells for drinking water.

NORTH CEDAR PARK

1163 140th St., Plainfield

North Cedar Wildlife Area (98 acres) joins North Cedar Park on the west side. The area includes timber and old river oxbows. It is open to hunting, fishing, hiking and other outdoor activities.

NORTH WOODS PARK

1249 Yuma Ave., Sumner

Fishing is available at the two ponds in the Wilson Grove Wildlife Area; a short walk from the campground.

Where to WORSHIP



VINEYARD CHURCH
WORSHIP COMPASSION DISCIPLESHIP

*Service Every Sunday
Morning at 10 a.m.*

319 W Bremer Ave, Waverly IA (319) 352-2656
www.waverlyvineyard.net

FIRST BAPTIST CHURCH OF WAVERLY

211 3rd St. SW
(one block east of Dairy Queen), Waverly, IA
319-352-2687

Pastor Dan Eloe
fbcwaverlyia@gmail.com

www.fbcwaverly.com



REDEEMER LUTHERAN CHURCH

www.redeemerwaverly.org

Summer Worship: Saturday, 5:30 p.m. & Sunday, 9:30 a.m.

Worship (September – May):
8:00 a.m. Traditional Worship & 10:30 a.m. Contemporary Worship

Wednesday Supper: 5:00-6:15 p.m.

Pastor Corey Smith
2001 West Bremer Ave, Waverly, IA • 319-352-1325

St. John Lutheran Church

415 4TH ST. SW, WAVERLY | 319-352-2314 | WWW.STJOHNWAVERLY.ORG



“Traditional Christ-Centered Worship for the Family”

WORSHIP TIMES

- Divine Service of Holy Eucharist - Sundays at 9 am

CHRISTIAN EDUCATION

- Sunday School / Adult Bible Study - Sundays at 10:30 am
- Friday Bible Study - Fridays at 9 am

ST. JOHN LUTHERAN PRESCHOOL

Serving children ages 3 - 5
www.sjlpwaverly.com

LIKE US ON FACEBOOK!



Peace United Church of Christ

1800 11th St. SE, Waverly | 319-352-3151 | Pastor Jon Hennings

Church Services
9:30 AM every Sunday

Sunday School
8:30 AM - 3rd Sunday of
Sept. thru 3rd Sunday of May.

Christmas Eve
7 PM

Easter
9:30 AM



No matter where you are in life,
there is a place for you at **Life Church!**

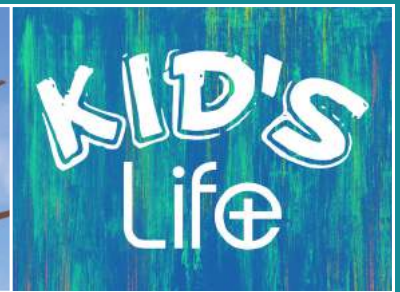
Discover what we have
to offer you & your family.

waverlylife.com

1013 E. Bremer Avenue, Waverly
319.352.2038

 Waverly Life Church

 waverlylifechurch



Life+ church



Sharing the Gospel. Sharing our Lives.

Join our community on Sunday Mornings @ 10am
Children's ministry for ages birth-5th grade
215 3rd street NW in Waverly



Crosspoint Church

Where to WORSHIP



St. Paul's
LUTHERAN CHURCH & SCHOOL

301 1st St NW, Waverly, IA
319-352-3850
life@stpaulswaverly.org

WORSHIP

SEPTEMBER–MAY

Sat. 5:30 p.m.

Sun. 7:30, 8:30 & 11 a.m.

JUNE–AUGUST

Sat. 5:30 p.m.

Sun. 7:30, 8:30 & 10:30 a.m.

EDUCATION

AUGUST–MAY

**St. Paul's
Lutheran School**
Preschool – 6th Grade

**Parish education
for all ages**

STPAULSWAVERLY.ORG

ST. MARY CATHOLIC CHURCH

Masses: Sat. 5:15pm, Sun. 8am & 10am.



2700 Horton Rd (1st St NW), Waverly
319-352-2493 www.StMarysFamily.com

Community Worship



WARTBURG COLLEGE



WARTBURG COLLEGE

Wartburg College is a private residential college with an enrollment of about 1,600. The college's 15 music ensembles, which include the internationally recognized Wartburg Choir, Castle Singers and Wind Ensemble, offer performances on campus and in the



community. Theater buffs will appreciate productions by the Wartburg Players, a student-run theater organization. The college's signature event is the nationally renowned Christmas with Wartburg, a four-concert series with performances in Waverly and West Des Moines. Wartburg sporting events also are great community-building opportunities. The college's teams are consistently ranked among the top overall NCAA Division III programs with 12 national team championships in wrestling and eight in women's track and field. In recent years, several other teams have advanced to post-season play, including appearances in NCAA tournament competition.

WARTBURG-WAVERLY SPORTS & WELLNESS CENTER (THE W)

Built in 2008, the Wartburg-Waverly Sports & Wellness Center, located near Walston-Hoover Stadium, houses the college's athletic department, indoor intercollegiate facilities, and health

and recreational amenities open to the public. Community memberships are available.

The facility includes:

- The 1,800-person capacity Levick Arena.
- A 200-meter track.
- A 6,500-square-foot fitness center with climbing wall.
- A natatorium with a six-lane, 25-yard pool; recreational swimming with a zero-depth entry area; waterslide; vortex pool; hot tub; and sauna.
- Six multipurpose courts for tennis, basketball, volleyball and more.



DEMOGRAPHICS & SERVICES



DEMOGRAPHICS

GEOGRAPHIC LOCATION

Waverly is located in Northeast Iowa on the banks of the Cedar River approximately 80 miles west of the Mississippi River and 60 miles south of the Iowa/Minnesota border.

POPULATION

2018 - 10,323
2016 - 10,093
2015 - 10,066
2012 - 10,035
2010 - 9,874
2000 - 8,968
1990 - 8,539

ALTITUDE

915 Feet

CLIMATE

Waverly's climate is continental in nature, characterized by four distinct seasons and a rather wide variation in temperature and precipitation.

AVERAGE TEMPERATURE

Winter: 19.4 degrees F
Summer: 70.2 degrees F



Waverly Locations

921 W Bremer
319.352.3502

316 E Bremer
319.352.1340

24 hour ATM

myfnbbank.com



Welcome to

Waverly

First National Bank is here for
all your financial needs.



Checking & Savings



Mortgage Loans



Small Business



Personal Loans

DEMOGRAPHICS & SERVICES

DEMOGRAPHICS

AVERAGE ANNUAL RAINFALL

32.9 inches

AVERAGE ANNUAL SNOWFALL

35.5 inches

DISTANCE TO MAJOR CITIES

Des Moines, IA - 132 miles
Minneapolis, MN - 223 miles
Chicago, IL - 291 miles
Omaha, NE - 264 miles

WORKFORCE

One of the Waverly area's most valuable assets is its high quality work

force. The Waverly area benefits from a population of over 240,000 within a 45 minute commuting radius, setting the stage for a generous and diverse pool of available labor.

An Educated Workforce: Over 2/3 (68.7%) of the employed residents in the labor shed area have some level of education/training beyond high school. The town also has one of the lowest unemployment rates in Iowa. Area job listings can be found at www.waverlyia.com/careers.

ABOUT WAVERLY

Waverly's population is 10,323 and is part of the Waterloo-Cedar Falls metropolitan statistical area. Waverly's sister city is the German town of Eisenach, home of the Wartburg Castle.

POLICE/FIRE DEPARTMENT

Waverly's police department consists of 18 officers, and the fire department is volunteer with 30-40 citizens.



Nicholas Thies
Agency Owner

221 W Bremer Ave,
Waverly, IA 50677
Tel 319.352.3168
Fax 319.352.3195

nthies@farmersagent.com

Registered Representative, Farmers Financial Solutions, LLC 30801 Agoura Road, Bldg 1, Agoura Hills, CA 91301-2054 Tel. 815.584.0200 Member FINRA & SIPC

DEMOGRAPHICS & SERVICES

EDUCATION

Wartburg College, founded in 1852, is a private four-year liberal arts college of the Lutheran Church (ELCA) and is nationally recognized for community engagement. The college offers over 50 majors, pre-professional programs and certificate programs leading to the bachelor's degree. Wartburg has been ranked in The Princeton Review's rankings of "Best Midwestern Colleges", as well as in U.S. News and World Report's annual rankings of "America's Best Colleges."

Waverly-Shell Rock Community Schools are located within the communities of Waverly and Shell Rock. The district is comprised of seven schools including five elementary schools, a middle school and a high school. The district strives "to create a passion for learning that will sustain students for a lifetime." With outstanding faculty and engaged students, W-SR Community Schools have consistent high test scores, and are highly regarded nationally, earning a bronze medal from the U.S. News and World Report. The school district has also been an early technological adopter using the one-to-one iPad program and implementing a new engineering curriculum.

St. Paul's Lutheran School is committed to providing quality education in an environment where Christian faith is taught, learned and lived.

RENEWABLE ENERGY

Waverly is a leader in the use of renewable energy. In 1993, Waverly Utilities became the first public power system in the midwest to own and operate wind generation. Waverly Utilities has set a goal known as "20 by 2020" which means they are striving to generate 20% of its energy with renewable sources by the year 2020.

HEALTH CARE

Waverly Health Center is a 25-bed critical access hospital in Waverly. WHC provides inpatient care, ambulatory surgery, outpatient services, speciality clinics and emergency room care to area residents. More than 50 health care providers and visiting specialists care for patients at WHC, allowing area residents local access to specialized care.

NEWSPAPERS

The Waverly Newspapers is published twice weekly. The Bremer County Independent and Super Shopper on Tuesdays and the Waverly Democrat on Thursdays, total distribution is 12,000 homes.

RADIO

Bremer County's only commercial Radio station KWAY 1470 AM/96.3FM plays classic country music. Y99.3FM plays current hits and serves Waverly and the greater Cedar Valley. KWAR (89.9 FM) is Wartburg's student station.

CHURCHES

There are nearly two dozen churches which represent: Baptist, Catholic, Community, Episcopal, Lutheran, Methodist, Nazarene, Life Church and United Church of Christ. See pg. 24-26

AIRPORT

Waverly Municipal Airport, completed in 1967, is located NW of Waverly on Business Route 218. It offers a runway, flight instruction, aircraft rental and fuel sales.

LOCAL Lenders. LOCAL Decisions.

We're not *just* bankers. We're your **friends and neighbors**...who just so happen to be your bankers!

STOP IN or APPLY ONLINE

www.statebankia.com



Scott Whitcome
NMLS #658360

James Perry
NMLS #1242703

Brittney Diercks
NMLS #1436568

Jeff Meyers
NMLS #658478

Bill Roths
NMLS #539883

CHECK US OUT ONLINE!
waverlynewspapers.com

Featuring: News, Sports, Obituaries, Contact Information, Business Links, Classifieds, Subscription Information and more! Get social with us on Facebook and Twitter!

WAVERLY NEWSPAPERS
319-352-3334



Professional SERVICES



COONRADT 

NEW & USED TRUCKS & CARS BEST SERVICE AROUND
 903 West Bremer Ave. | Waverly, Iowa | (319) 352-4710 or 866-352-4710 (Toll Free)
 Family owned since 1933 www.coonradtford.com



THAT'S HOW WE ROLL...
 Hundreds of tires in stock.

WAVERLY TIRE COMPANY

Family Owned & Operated for over 67 years
 2116 4th St. SW, Waverly, IA 50677
 319-352-2906 • 319-352-5154
www.waverlytires.com

 **BRIDGESTONE**
 **YOKOHAMA**
 **Firestone**



Dales Service, Inc.




Towing • Brakes
Alignments • Suspension Tune-Ups • Exhaust Systems
Exhaust Systems • Diagnostics General Maintenance
 Now Offering 24 Hour Towing
 319-230-3081

119 4th St. S.W. • Waverly
319-352-3574 • Troy Carolus, Owner

RAMKER
 Construction & Supply, Inc.



CALL NOW!
 Scott Ramker
 415-0702

Residential & Commercial Construction • Kitchen & Bath Remodeling
 Door & Window Replacement • Room Additions • Design Work
 Custom Homes • Decks

220 8th Avenue S.W. • Waverly, Iowa • 352-4286 • builders@ramker.com
www.ramker.com

PRESSED FOR TIME?
Let us help you!

PRESS RITE DRY CLEANERS
 Cheryl Albers, Owner
 130 10th St. SW, Waverly
 (located in Collegetown Plaza)
 319-352-3847
 Mon-Fri 8:30-5:30 | Sat 9-12

"BIG OR SMALL, WE CLEAN IT ALL!"



MINI STORAGE

Storage for Small Residential to Large Commercial
 Low Monthly Rates • Security Fenced & Lighted
 RV & Boat Storage Inside or Out
 Climate Controlled Offered • 7 Day Access
 On Site Office • Two locations • Security cameras

220 8TH AVE SW, WAVERLY, IA
319-352-4286
www.ramkerstorage.com



Professional SERVICES

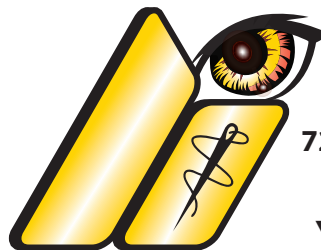


Paws Amore

1901 E BREMER AVE • WAVERLY

**DOG DAYCARE
BOARDING
TRAINING
PICK & DROP OFF**

**319.352.1480
WELOVEYOURPAWS.COM**



**EMBROIDERY
SCREEN PRINTING
PROMOTIONAL ITEMS**

720 Technology Place, Suite E
Waverly, Iowa 50677

www.liesprinting.com

No lies, we keep a long impression

**LONG 319-559-2096
IMPRESSIONS**

Find us on [@liesprinting](https://www.facebook.com/liesprinting)



The **PRINTERY**
AND ~ NORTHWOODS ~
PAPER & SUPPLY CO.

215 West Bremer Ave. • Waverly
319-352-5822
julie@printery.net | www.printery.net

- Full Service Printing
- High Quality Copies
- Color Copies
- Print Outs From Files
- Graphic Design
- Blank Paper & Env.
- FAX Service
- Rubber Stamps
- Laminating
- Banners
- Office Supplies
- Greeting Cards
- Notepads
- Custom Wedding Invitations & Programs

Fast, Friendly Service & Quality Printing!



**ADVANCED BODYWORK
& MASSAGE THERAPY**

Monday through Friday by Appointment
319-352-1430 | 123 2nd Street N.E., Waverly

IT'S TIME TO GET
Relaxed & Refreshed

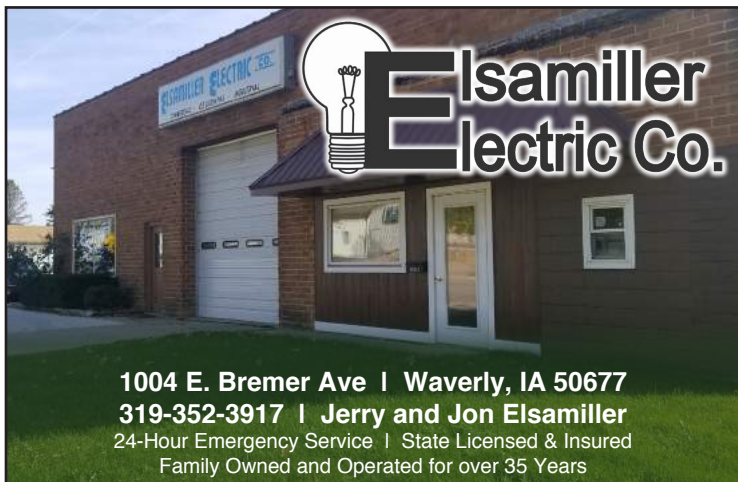
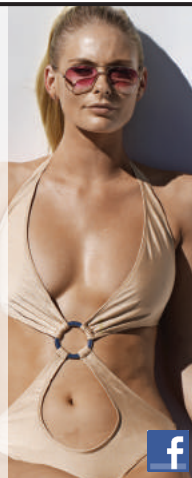
IT'S GLOW TIME

We offer 9 tanning units with one of the areas most diverse selection of units from base units to high power upgrades, including stand up units! We also offer aqua massage!

**"THE BEST PLACE IN
TOWN TO GET BROWN"**

Tropical Tanspa
TANNING

COLLEGETOWNE PLAZA
(LOCATED ON THE BACK OR SOUTH SIDE)
134 10th St. SW, Waverly | 319-352-2439
www.waverlytropicaltanspa.com



**Elsamiller
Electric Co.**

1004 E. Bremer Ave | Waverly, IA 50677
319-352-3917 | Jerry and Jon Elsamiller
24-Hour Emergency Service | State Licensed & Insured
Family Owned and Operated for over 35 Years

Professional SERVICES

LENNOX

CRYSTAL

HEATING AND COOLING PLUMBING AND EXCAVATING



SERVING WAVERLY AND SURROUNDING COMMUNITIES FOR OVER 85 YEARS!

1210 W Bremer Ave. • Waverly, IA 50677 • 319.352.3241 • Fax 319.352.0513

BREMER MUTUAL INSURANCE

INSURING, PROTECTING AND INVESTING IN NORTHEAST IOWA SINCE 1875.
111 1st Ave SE, Waverly, IA | (319) 352-1863




NAMIC
NATIONAL ASSOCIATION OF MUTUAL INSURANCE COMPANIES

MUTUAL INSURANCE ASSOCIATION OF IOWA

GRINNELL MUTUAL MEMBER

Stumme, Collins, Gritters & Epley, PLLC

Attorneys at Law



General practice including but not limited to:

- Real Estate
- Wills, Trust & Estate Planning
- Probate
- Personal Injury
- Collection & Foreclosure
- Bankruptcy
- Domestic Relations & Family Law
- Tax Preparation
- Trail & Litigation

Free initial consultation for: Bankruptcy and Personal Injury
Hyatt Legal Plan Participant

303 1st Ave NE, Waverly, IA 50677
171 E Main St, Denver, IA 50622
www.waverlydenverlaw.com



715 Main Street, Plainfield, Iowa

Serving the communities of
Clarksville, Frederika, Plainfield, Shell Rock, Janesville & Tripoli



***Internet speeds up to 100 Mbps**

***Over 230 channels of Digital TV**

***Local Phone Service**

***Save when you bundle!**

Providing advanced telecommunications services to residents & businesses in NE Iowa for over 100 years!

www.Butler-Bremer.com **319-276-4458**



FLOOR COVERINGS WINDOW TREATMENTS INTERIOR DESIGN

Professional Installation
Family Owned and Operated



Designers Tara and Lisa



INTERIOR *Focus*

1200 10th AVE SW • Waverly • 352-5652

www.2guysinteriorfocus.com

HOURS: Monday - Friday 9:00 AM to 5:00 PM



WALSORTH FAMILY DENTISTRY, P.C.



DR. JOEL WALSORTH



DR. JESSICA CORCORAN

**CALL
319-352-5281
TO SET UP
YOUR
APPOINTMENT
TODAY!**

Creating beautiful and healthy smiles in a friendly environment

Walsworth Family Dentistry is pleased to offer comprehensive dental treatment for all ages in a warm and friendly environment. We utilize the most advanced technology such as digital x-rays, ultrasound dental cleaners and Cerec same day crowns to provide the most comfortable and high quality treatment.

Our Services include:

- Cosmetics: Smile makeovers, whitening, veneers
- Pediatric and "happy visits" for children 2 and under
- Dentures and Partial dentures
- Periodontal Therapy
 - Root canals
 - Routine Cleanings
- Place and restore dental implants
- Traditional crown and bridge work
 - Cerec same day crowns
 - Night and athletic guards
 - Invisalign

Office Hours

- Monday 7:00am - 5:00pm
- Tuesday 7:00am - 5:00pm
- Wednesday 7:00am - 5:00pm
- Thursday 7:00am - 5:00pm
- Friday 7:00am - 1:00pm

121 20TH ST NW, WAVERLY



DISCOVER BREMER COUNTY



BREMER COUNTY

Bremer County is located in Northeast Iowa. As of the 2010 census, the population was 24,276. Its county seat is Waverly. The county was named for Fredrika Bremer, a Swedish traveler, poet, and author. Bremer County is included in the Waterloo-Cedar Falls, IA Metropolitan Statistical Area. Bremer County is made up of 8 cities: Denver, Frederika, Janesville, Plainfield, Readlyn, Sumner, Tripoli and Waverly. It also includes 4 unincorporated communities and is divided into 14 different townships.

DENVER

**Denver City Hall,
100 Washington St., Denver
319-984-5642**

www.cityofdenveriowa.com

Called the Mile Wide City, Denver is known for its excellent school system, the progressive vision of its leaders and the opportunities for growth it offers both in the public and the private sectors. It has its own grocery store as well as a vibrant main street. Five council members and a mayor lead the city. The town's annual celebration, Denver Breakaway Days, usually takes place the third weekend of August. There were 1,780 people, according to the 2010 U.S. Census.



Cyclone City Park, Denver, IA

STERLING TOPS



200 SOUTH STATE STREET, DENVER, IA
319-984-5712

**Custom Countertops in Laminate,
Solid Surface, Granite, and Quartz**

- Giftware
- Specialty Wines and Beers
- Kodak Photo Kiosks
- Greeting Cards
- We accept most insurances

**DENVER
DRUG AND PHOTO**
Care you can trust.

340 S. State St., Denver, Iowa 50622 319-984-5691
denverdrugandphoto.com

DISCOVER BREMER COUNTY



Downtown, Denver, IA

HOME • AUTO • FARM • COMMERCIAL

D DENVER INSURANCE

Serving you for over 40 years

Independent Agent • Competitive Prices
Personal Service

319-984-6151 • 124 S State St. • Denver, IA



DAVIK'S AUTO BODY REPAIR

COMMITMENT TO QUALITY OVER 45 YEARS
Your Vehicle Deserves the Best! Satisfaction Guaranteed!
300 Transit St., Denver, IA 50622 | 319-984-5995



MOVING IN? LET US WELCOME YOU TO THE NEIGHBORHOOD!

Our Home Guard policy packs quality, protection at affordable prices. We are locally-owned and operated company, offering friendly personal service and strong insurance to protect your home. Call our office today for details or a competitive quote.

FM FIRST MAXFIELD MUTUAL SINCE 1890
WWW.FIRSTMAXFIELD.COM
DENVER, IA

800.366.7014
OR 319.984.5255



WHEREVER YOU RIDE... MTS WILL BE THERE FOR YOU!
MOTORCYCLE TOWING SERVICES, L.C.
MTS
RIDE WITH MTS. YOU WILL NEVER RIDE ALONE.

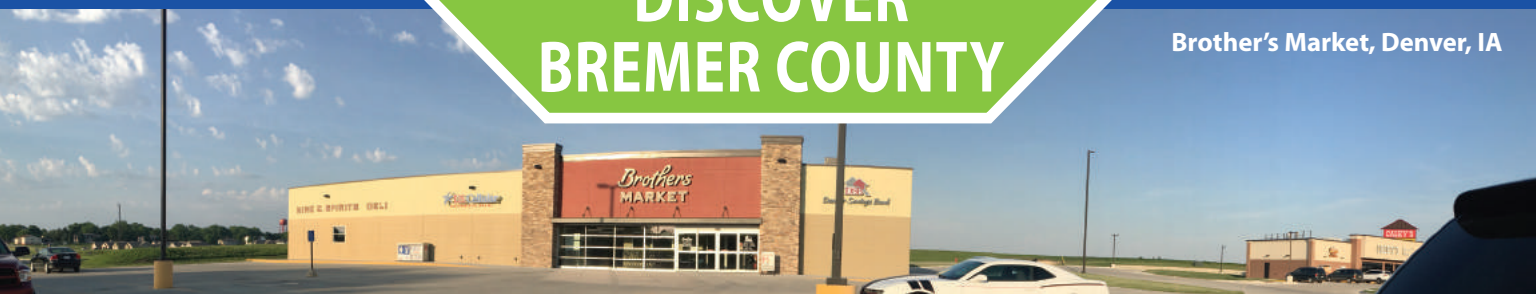
#1 ROADSIDE ASSISTANCE FOR MOTORCYCLES
UNITED STATES • ALASKA • CANADA • HAWAII
1-800-999-7064
401 S. STATE ST., DENVER • WWW.MTS-TOWING.COM
INFO@MTS-TOWING.COM

Newy's wireless Communications

319-240-7150 AUTHORIZED AGENT
1022 SKYLER ST., SUITE B, DENVER

DISCOVER BREMER COUNTY

Brother's Market, Denver, IA



WHERE WE TREAT YOU LIKE FAMILY

Store Specials *plus* Weekly Savings!

Find us on **facebook**

- Fresh Produce
- Quality Meats
- Frozen Favorites
- Deli Items
- Dairy & Cheeses
- Wine, Spirits & Fun
- Grocery Goods
- General Merchandise



Your neighborhood store and a whole lot more
Whether you live here, work here, are passing through or spending the day.

MONDAY - SATURDAY 8 A.M.-9 P.M. | SUNDAY 9 A.M.-6 P.M.

1022 SKYLER STREET, DENVER, IA | 319-406-0004 | WWW.DENVER@SHOPBROTHERMARKET.COM

DISCOVER BREMER COUNTY

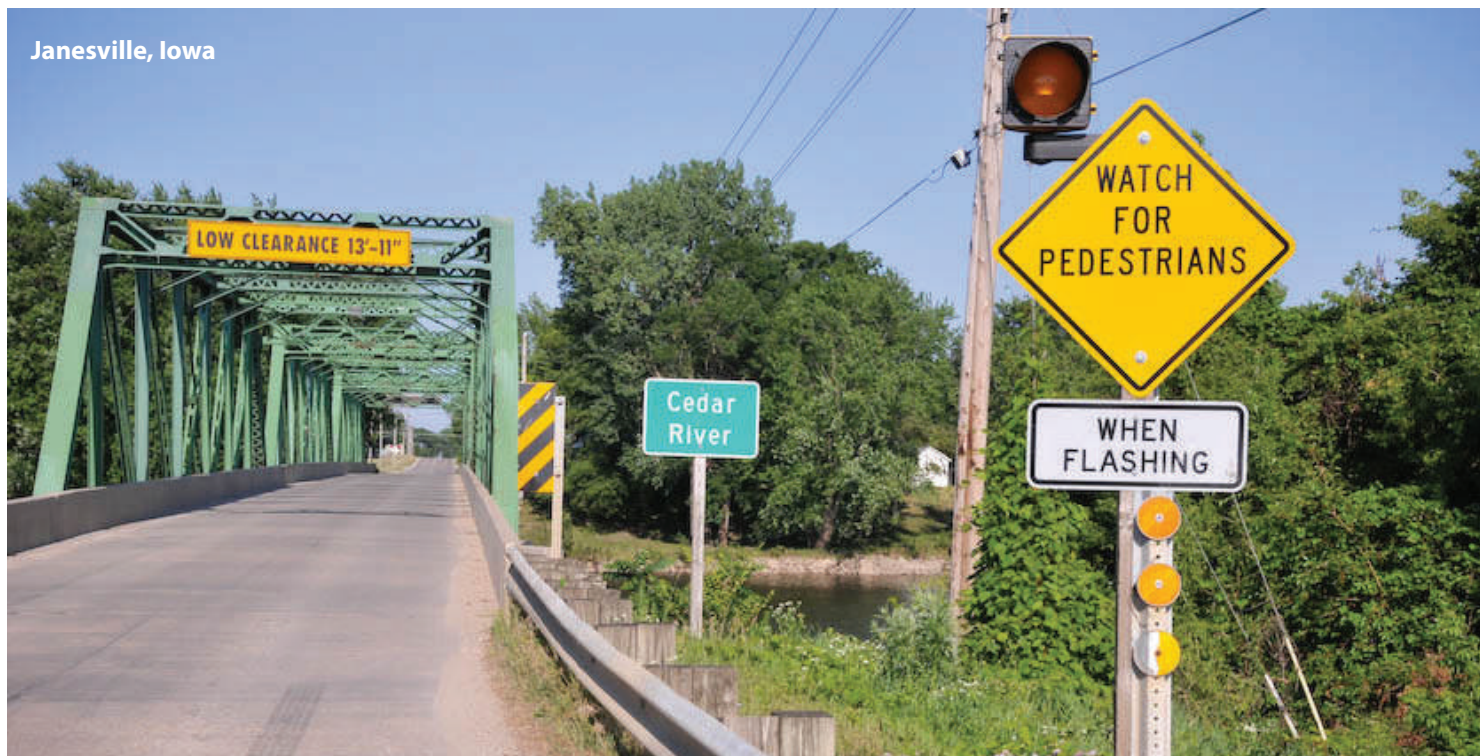
JANESVILLE

**Janesville City Hall,
227 Main Street, Janesville
319-987-2905
www.janesvilleia.com**

Janesville, the first town platted in Bremer County in 1849, is small in size, but large in opportunities and abundant with friendly people. The population, according to the 2010 Census is 930 people. It is governed by a mayor and a five-member city council.

Named after its founder's wife, Jane Barrick, today Janesville is a rural community with tree-lined streets nestled high along the rippling water of the Cedar River. It's bordered by rich farmland and forest green fields, plus Highway 218 (Avenue of the Saints that runs between St. Paul and St. Louis). Local people are proud of their town, which has several churches, a library, lumberyard, eating establishments, and numerous other factories and businesses. It is small

enough to be "homey" but large enough in organizations so that there is something for everyone. Its excellent quality Pre-K – 12 school has graduated outstanding talents and is staffed by caring, dedicated teachers. The Janesville Community is forward-looking and planning for future businesses and homeowners through long-range goals. The town's celebration is called Janesville Days and happens in late July.



Janesville, Iowa

Jim Hundley

Heating Air Conditioning & Plumbing

525 Main St. Janesville • 319-987-3134



Cliff's Place

BREAKFAST • LUNCH • DINNER

**DAILY SPECIALS
MONDAY - SATURDAY
OPEN AT 6 AM**

1404 Easton Ave, Horton, IA
319-276-3114



DISCOVER BREMER COUNTY

Readlyn City Park, Readlyn, Iowa



READLYN

Readlyn City Hall
128 Main Street, Readlyn
319-269-6753

What do you expect from a town in Iowa that prides itself on an atmosphere where 851 friendly people co-exist with one old Grump?

Welcome to Readlyn, a town that offers the beauty of northeast Iowa with its surrounding fertile fields, clean air and welcoming community by the Wapsipinicon River.

The spirit and pride of the residents is evident in Readlyn, which boasts great quality of life. Friendly, educated, community-minded people are Readlyn's most valuable resource.

The town was named after a representative from the Townside Company, which came to the area in 1903 to build a station for the Chicago Great Western railway line that was to connect Waverly to Oelwein.

Today, Readlyn is governed by a five-member city council and a mayor and has 808 residents, according to the 2010 Census.

The town's annual celebration is called, appropriately, Grump Days, it takes place in June.

The Oak Tree, Inc.

GENERAL STORE AND MORE

708 Main St., Plainfield • 319-276-4740
 Hours: Mon-Fri. 9-5; Sat. 9-3 Or by Appointment



CABINETS • GIFTS • FOOD

We Keep Our Finger on the Pulse of LOCAL REAL ESTATE

RESIDENTIAL • COMMERCIAL • AGRICULTURAL • ACREAGES



John Larsen
615-257-7022



Linda Rodemaker
319-415-6645



Connie Niemeyer
641-330-9475



Roach Farms
Real Estate, LLC

714 Main Street, PO BOX 158, Plainfield, IA
 319-276-4455 | www.roachfarms.com

READLYN MUTUAL

INSURANCE ASSOCIATION

Serving Communities and Farms since 1875

readlynmutual.com

234 Main Street, Readlyn, IA 50668
 319-279-3893 • 800-663-7634



HOPPERS • TANKERS • VANS



*We're here for your
trucking needs.*

Readlyn, IA In Business Since 1945
 Denny - Rod - Barry **319-279-3371**

DISCOVER BREMER COUNTY

PLAINFIELD

City of Plainfield
604 Main Street, Plainfield
319-276-3449

Plainfield has an estimated 436 residents according to the 2010 Census. It is governed by a five-member city council and a mayor. In 2016, the town marked its 150th anniversary during its annual celebration in July. The town offers a friendly and safe atmosphere with a great school system and a quality of life, amply captured in the city's motto, "The Heart of a Rural Community." The town's annual celebration Plainfield Days happens the second weekend in July.



Plainfield Downtown, Plainfield, Iowa

FREDERIKA

Frederika Town Hall,
111 3rd St., Frederika
319-275-4579

Frederika is a city in Bremer County, Iowa. The population was 183 according to the 2010 census. It is named for Fredrika Bremer (note different spelling), the Swedish author, for whom the surrounding county was also named.

Frederika is led by a mayor and the city council. The town's annual celebration is in early July, coinciding with the 4th of July celebration. Frederika is known for the hospitality of its people and the July 4th fireworks.

Frederika Post Office, Frederika, Iowa



DISCOVER BREMER COUNTY

TRIPOLI

Tripoli City Hall
303 South Main, Tripoli
319-882-4801

Tripoli is known as the "Home of Sweet Marsh," a wildlife area of 2,855 acres of pristine plant and animal species.

Known for its environmentally minded people, Tripoli today has 1,313 residents according to the 2010 Census, who are proud of a friendly downtown, the Tripoli school system and the 2,855 acre Sweet Marsh. Tripoli's community means dedicated volunteers, a tribute to veterans, five area churches and small town hospitality.

Agriculture is a major economic driver & health providers offer first-class care. Many recreational opportunities contribute to a fun, safe and friendly environment.

Sweet Marsh, Tripoli, Iowa



Next Move:

Find the Best Insurance



COMMUNITY INSURANCE

OF IOWA

Life is busy and complicated. You shouldn't have to add anxiety over insurance coverage on top of it. At Community Insurance of Iowa, our agents provide peace of mind in the form of insurance policies covering all aspects of your personal life.

Proudly serving individuals and families living in and around Edgewood, New Hampton, Guttenberg, Oelwein, Strawberry Point and Tripoli, Iowa.

144 S MAIN ST, TRIPOLI, IA | (319) 882-3557
WWW.CIOIA.COM

Angela Rosol, Agent/CSR
Kelby Bergmann, Agent/CSR

DISCOVER BREMER COUNTY

SUMNER

Sumner City Clerk
105 E 1st St., Sumner
563-578-3242

www.mysumneriowa.com

Nestled in Northeast Iowa, Sumner straddles Bremer and Fayette counties, along Highway 93.

Its motto, "A city with a future,"

captures the spirit of this quaint town.

Established in 1870, today its population numbers 2,028 according to the 2010 U.S. Census. The town is governed by a five-member city council and a mayor.

Its annual celebration, Sumner Days, takes place on the third weekend in July.

Sumner features amenities that are standard in big city living, but come with a small town feel. The community prides itself on its family-friendly environment, newly reconstructed hospital, a modern public library, an

aquatic center, a local grocery store, and many mom and pop shops on Main Street. Sumner is committed to education, business growth and opportunities for all.



Downtown, Sumner, Iowa

TH & FRI 10-5, SAT 10-3
 110 W FIRST ST.,
 SUMNER, IA

Find us on [facebook](https://www.facebook.com/makersmarketia)

WE ARE HERE TO HELP

Let us help you find the home that's the perfect fit for you!

TOWN & COUNTRY REAL ESTATE

Connie Rochford, Broker, 319-231-9002
 Louie Hartman, 319-239-0533
 Gary Geuther, 319-415-9874

SERVING NE IA
 563-578-8899 | 215 N. Railroad, Sumner
 Check out all listings at towncountyhome.com

Walvatne Floor Covering

The Store That Covers Your Floor

563.578.5412
 Sumner, IA

Carpet • Luxury Vinyl • Hardwood • Tile
www.walvatnefloorcovering.com



KaK Clothing

105 WEST FIRST ST., SUMNER, IA | 563-578-3235

Clothing and accessories for infants & women

WALVATNE FLOOR COVERING

THE STORE THAT COVERS YOUR FLOOR

Over 28 years in Business

112 EAST 1ST STREET,
 SUMNER, IA
 563-578-5412

WALVATNEFLOORCOVERING.COM

IMPORTANT INFORMATION

IMPORTANT PHONE NUMBERS

Emergency	911
Road Conditions	511
Iowa State Patrol	(319) 277-4761
Bremer County Sheriff	(319) 352-5400
Waverly Police Department	(319) 352-5400
Waverly Fire Department	(319) 352-5521

MEDICAL ASSISTANCE

Waverly Health Center	(319) 352-4120
Emergency	(319) 352-4901
Walk -in Clinic	(319) 483-1400

AREA INFORMATION SERVICES

Bremer County Courthouse	(319) 352-0340
Waverly Chamber of Commerce	(319) 352-4526
Waverly City Hall	(319) 352-4252
Waverly Utilities	(319) 352-6251
Waverly Public Library	(319) 352-1223



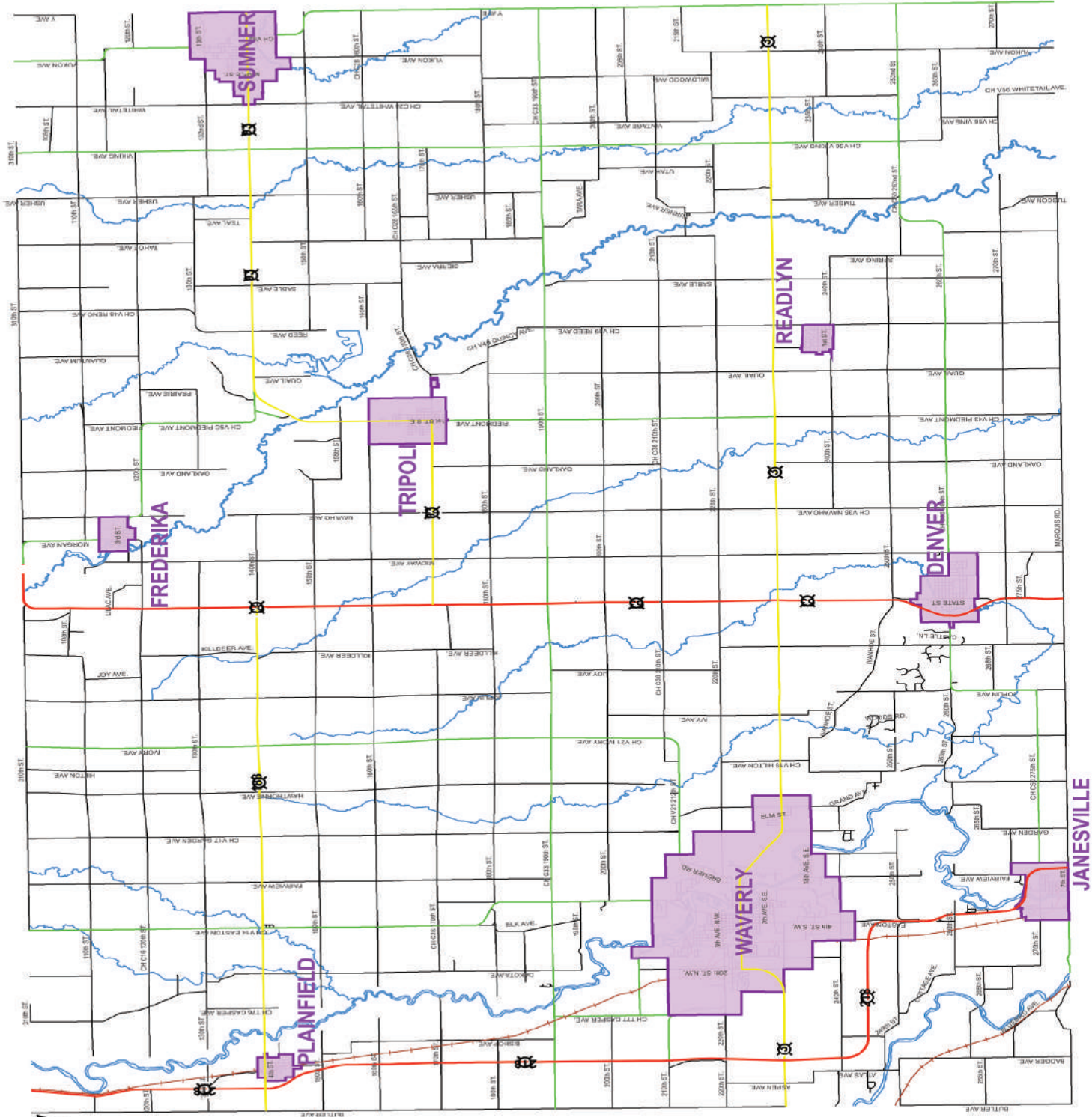
ADVERTISING INDEX

2 Guys	34
Advanced Massage	32
B.E. Mick's.....	15
Bremer County Mutual	33
Brother's Market.....	37
Cliff's Place	38
Cobblestone Inn	21
Community Insurance.....	41
Coonradt Ford	31
CrawDaddy Outdoors.....	8
Crosspoint Church.....	25
Crystal Heating & Plumbing	33
CUNA	47
Dales Service Inc.....	31
Daviks Autobody.....	36
Denver Drug	35
Denver Insurance	36
East Bremer Diner	20
Edward Jones.....	4
Elsamiller Electric.....	32
Farmers Insurance.....	29
First Baptist Church	24
First Maxfield.....	36
First National Bank.....	28
Golden Thistle	16
Hobson's Dairy Queen	20
Hy-Vee	15

Jim Hundley.....	38
Jimmy's Nails	16
Kaiser-Corson	7
KnK Clothing.....	42
Life Church	25
Long Impressions.....	32
Love & Lace	15
Maker's Market.....	42
Miller True Value.....	16
MTS Motorcycle.....	36
Nagle Signs Inc	17
Newy's Wireless	36
Oak Tree	39
Paws Amore	32
Peace United Church.....	30
Pink Daisy	16
Poshly Picked.....	17
Press Rite Cleaners.....	24
Quality Inn/Super 8.....	23
Rack 'em Up.....	15
Ramker Construction.....	31
Readlyn Mutual Insurance	39
Redeemer Lutheran Church.....	24
Retrieving Freedom	9
Roach Farms	39
Rock River Pet Resort	22
Root	16

St. John Church.....	26
St. Mary Church	24
St. Paul's Church	24
Star Motel.....	23
State Bank.....	30
Sterling Tops	35
Stumme, Collins, Gritters & Epley.....	33
Sub City	20
The Other Place II	20
The Printery.....	32
Tiedt Nursery	15
Town & Country.....	42
Trinkets & Togs	15
Tropical Tan Spa	32
Vineyard Church.....	24
Walsworth Dentistry.....	34
Walvatne Flooring.....	42
Waverly Golf	7
Waverly Health Center.....	48
Waverly Tire	31
Waverly Newspapers.....	30
Waverly Utilities	2
WAVP	20
Wild Carrot.....	17
Wittenburg Trucking.....	39
Wolf Creek Tattoos.....	6
Ziggy's Dominoes.....	20

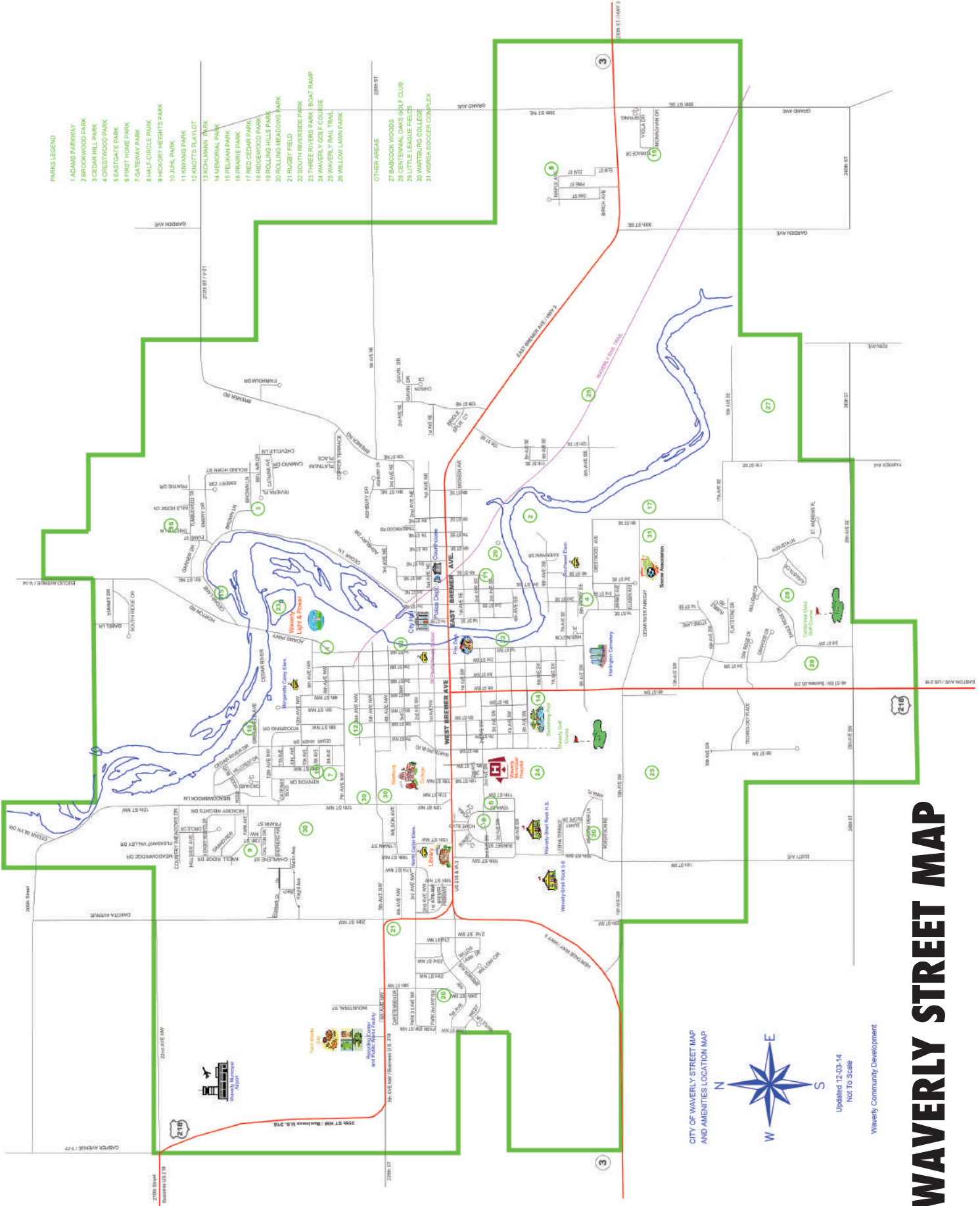
Bremer County Street Map



Legend

- Cities
- Rivers / Streams
- Rail/Roads
- Local Roads
- County Hwy
- US & State Hwy
- State Hwy
- US Hwy

™ Bremer County
GIS Department



PARK LEGEND

- 1 ADAM PARKWAY
- 2 BROOKWOOD PARK
- 3 CEDAR HILL PARK
- 4 CRESTWOOD PARK
- 5 EASTGATE PARK
- 6 FIRST HOME PARK
- 7 GATEWAY PARK
- 8 HALF-CIRCLE PARK
- 9 HICKORY HEIGHTS PARK
- 10 JUNE PARK
- 11 KWANIS PARK
- 12 KNOTT'S PLAYLOT
- 13 KOLBMAN PARK
- 14 LEBRON PARK
- 15 PLEASANT PARK
- 16 PRINCE PARK
- 17 REE CEDAR PARK
- 18 ROCKWOOD PARK
- 19 ROLLING HILLS PARK
- 20 ROLLING MEADOWS PARK
- 21 RUGBY FIELD
- 22 SOUTH RIVERSIDE PARK
- 23 THREE RIVERS PARK BOAT RAMP
- 24 WAVERLY GOLF COURSE
- 25 WAVERLY TRAIL TRAIL
- 26 WILLOW LAWN PARK

- OTHER AREAS**
- 27 BARBOCK WOODS
 - 28 CENTINIAL OAKS GOLF CLUB
 - 29 LITTLE LEAGUE FIELDS
 - 30 WARTBURG COLLEGE
 - 31 WYBICA SOCCER COMPLEX

CITY OF WAVERLY STREET MAP
AND AMENITIES LOCATION MAP



Updated 12-03-14
Not To Scale

Waverly Community Development

WAVERLY STREET MAP

ROLLING PRAIRIE TRAIL

WAVERLY RAIL TRAIL - DENVER/JEFFERSON TRAIL - READLYN GRUMP TRAIL

LEGEND

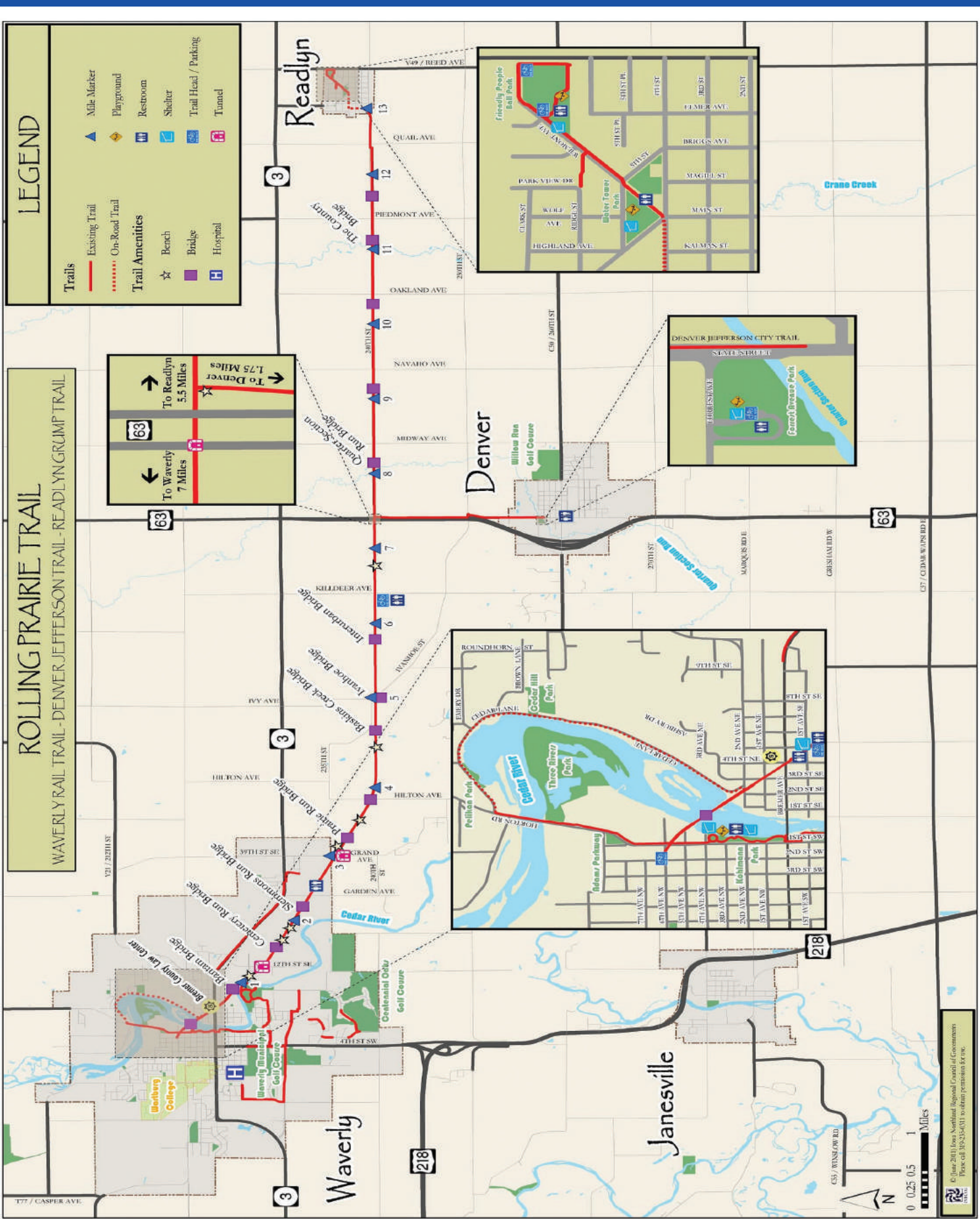
Trails	
	Existing Trail
	On-Road Trail
Trail Amenities	
	Bench
	Bridge
	Hospital
	Mile Marker
	Playground
	Restroom
	Shelter
	Trail Head / Parking
	Tunnel

63

To Waverly
7 Miles

To Denver
5.5 Miles

To Readlyn
1.75 Miles



© June 2011, The Associated Regional Council of Governments
 Project #102354011, all other permissions for use.

A commitment to community.



At CUNA Mutual Group, we understand our success is dependent on doing the right thing for our customers, our communities, and the environment. We are resolute in this commitment and look forward to strengthening our connections to customers and the community in the years to come.



Common Purpose. Uncommon Commitment.

1000000-0213WavCham
© CUNA Mutual Group, 2016 All Rights Reserved.

2000 Heritage Way • Waverly, IA 50677
www.cunamutual.com



BIG CITY
CARE, SMALL TOWN

COMFORT

Waverly Health Center's breadth and depth of services make it easy for you to remain close to home, avoiding the stress of traveling for your care.

**We're big enough to care for you,
but small enough to care about you.**

We know you'll be pleasantly surprised by our friendly, professional staff and comfortable setting.

WAVERLY HEALTH
— C E N T E R —

(319) 352-4120 | WaverlyHealthCenter.org